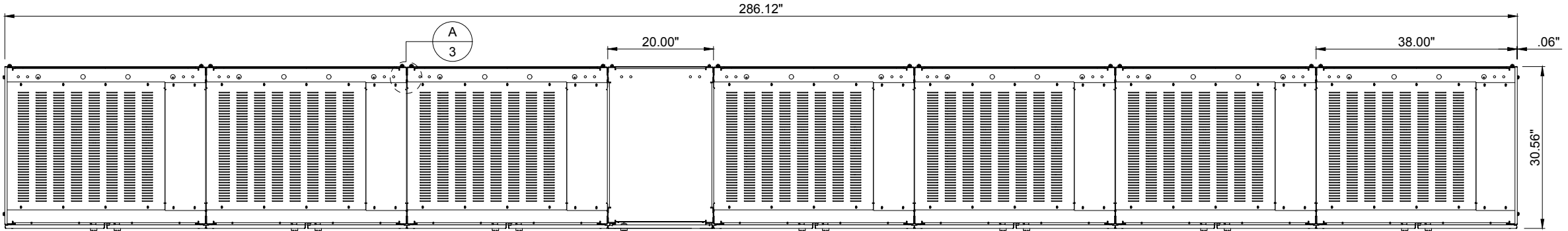


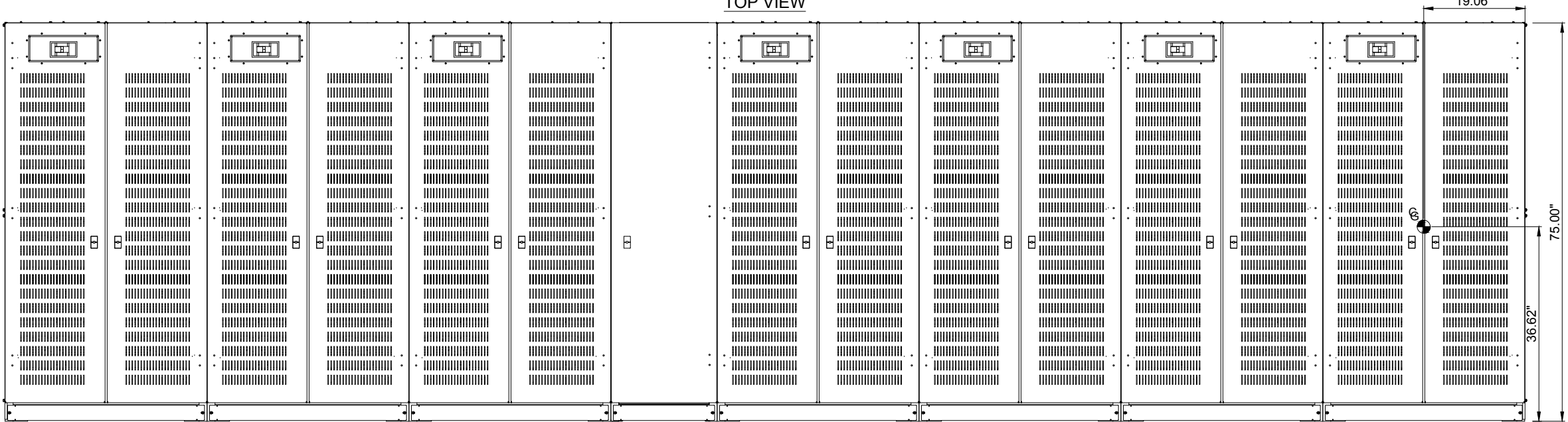
CAUTION: HIGH VOLTAGE, RISK OF ELECTRICAL SHOCK

FOLLOW ALL SAFETY PRECAUTIONS WHEN WORKING ON THIS SYSTEM

ALWAYS WEAR PROPER SAFETY EQUIPMENT INCLUDING EYE PROTECTION

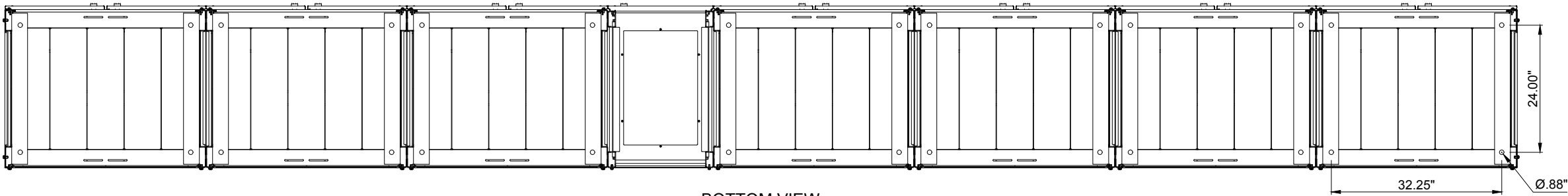


TOP VIEW

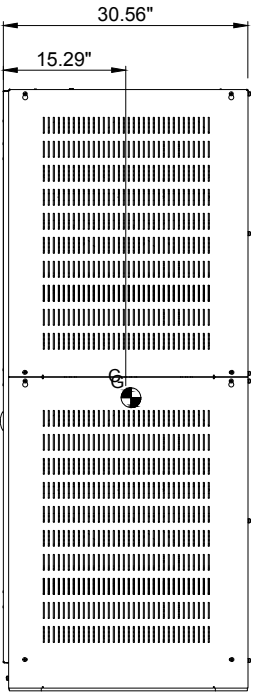


CABINET A CABINET B CABINET C CJC CABINET D CABINET E CABINET F CABINET G

FRONT VIEW



BOTTOM VIEW



SIDE VIEW

DRAWING CONFIGURATION CODE	UPS RATING	
	1000kVA BREAKER	WIRE
315	400A	1 x 4/0

THE INFORMATION CONTAINED IN THIS DRAWING IS THE SOLE PROPERTY OF INTRAPACK INDUSTRIES INC. ANY REPRODUCTION IN PART OR WHOLE WITHOUT THE WRITTEN PERMISSION OF INTRAPACK INDUSTRIES INC. IS PROHIBITED.

NO.	DATE	REVISION DESCRIPTION	<div>ABB</div> <div>DESIGNED AND MANUFACTURED BY INTRAPACK FOR ABB © INTRAPACK 2021</div>	SYSTEM WEIGHT: 4,725 lbs NO BATTERIES				ADJACENT REMOTE TOP TERMINAL BATTERY CABINET SYSTEM - CONFIG #315	1 OF 4	
				JOB NO.	N/A	DATE:	03/04/2021			
				QUOTE NO.	N/A	DRAWN BY:	VZ	DRAWING NO. TLE5-28012V-480-7-7D400-AR-CJC-CONFIG#315		
				SCALE:	N.T.S.	APPR. BY:				

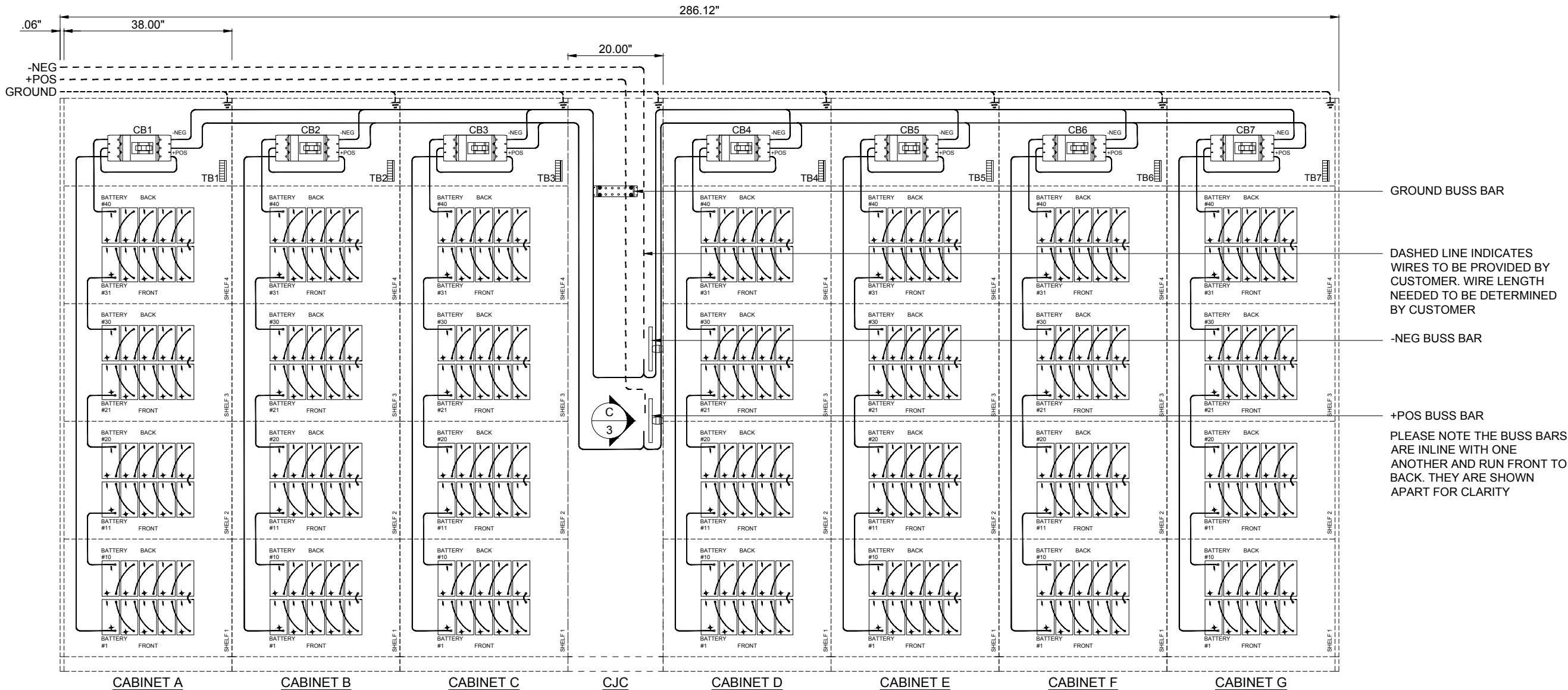
POSITIONING OF COMPONENTS ARE FOR ILLUSTRATION PURPOSES AND MAY NOT BE REPRESENTED IN THE EXACT LOCATION INDICATED.

CAUTION: HIGH VOLTAGE, RISK OF ELECTRICAL SHOCK

- FOLLOW ALL SAFETY PRECAUTIONS WHEN WORKING ON THIS SYSTEM
- ALWAYS WEAR PROPER SAFETY EQUIPMENT INCLUDING EYE PROTECTION

GENERAL NOTES:

- ONLY QUALIFIED TECHNICIANS SHOULD PERFORM INSTALLATION OR MAINTENANCE OF THIS BATTERY SYSTEM.
- ALL TOOLS SHOULD BE INSULATED TO PREVENT ELECTRICAL SHOCK.
- OPEN DISCONNECTS BEFORE INSTALLATION OR MAINTENANCE.
- CHECK DC VOLTAGE AT BATTERY OUTPUT AND UPS OUTPUT TO ENSURE PROPER POLARITY BEFORE MAKING FINAL CONNECTIONS.



ELECTRICAL ILLUSTRATION

THE INFORMATION CONTAINED IN THIS DRAWING IS THE SOLE PROPERTY OF INTRAPACK INDUSTRIES INC. ANY REPRODUCTION IN PART OR WHOLE WITHOUT THE WRITTEN PERMISSION OF INTRAPACK INDUSTRIES INC. IS PROHIBITED.

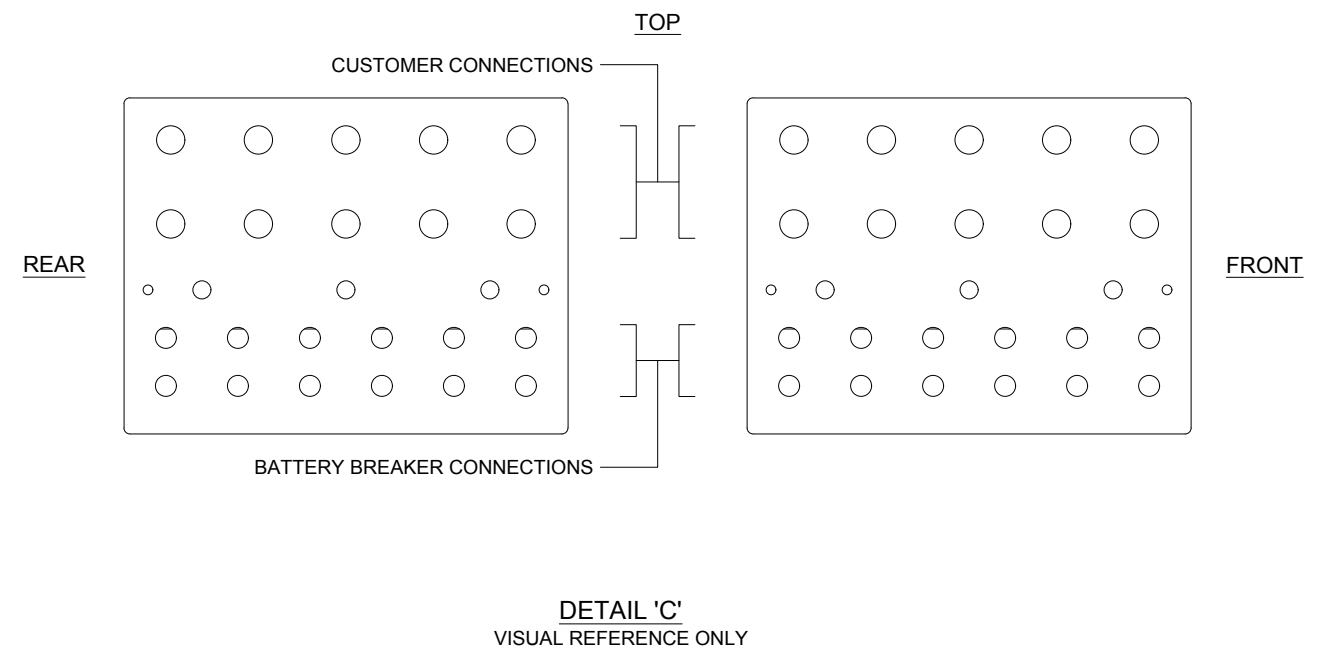
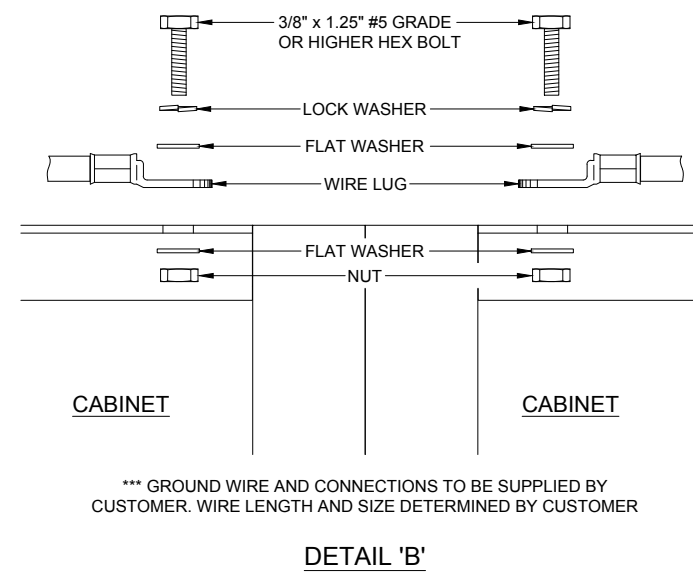
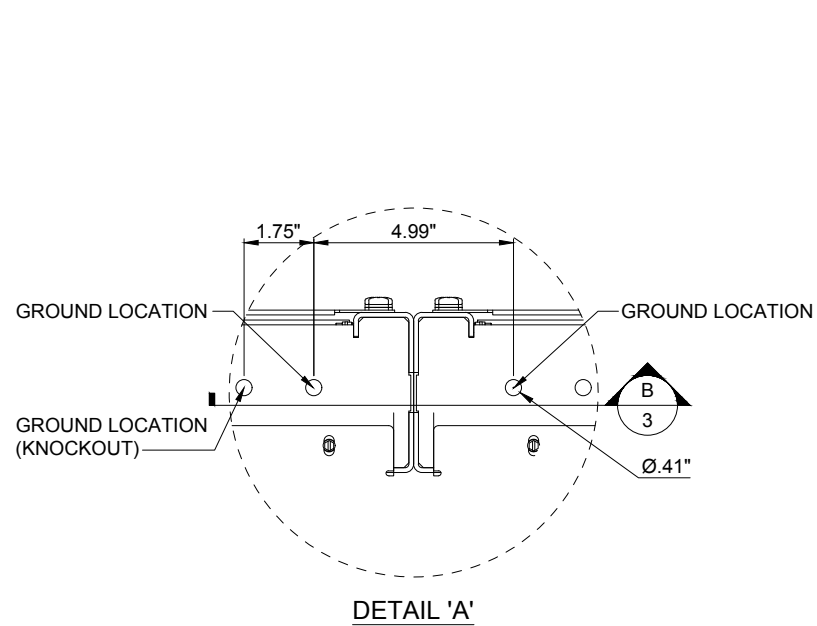
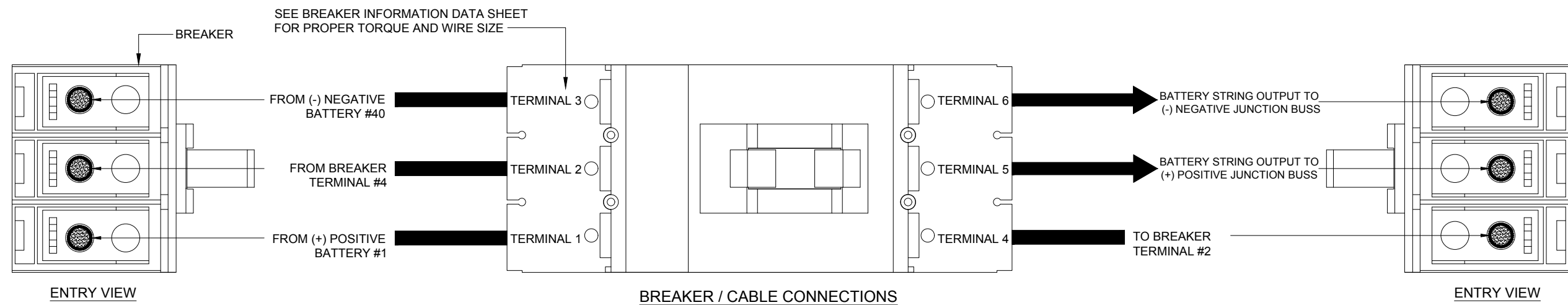
NO.	DATE	REVISION DESCRIPTION	<div><div>ABB</div><div>DESIGNED AND MANUFACTURED BY INTRAPACK FOR ABB © INTRAPACK 2021</div></div>	SYSTEM WEIGHT: 4,725 lbs NO BATTERIES				ADJACENT REMOTE TOP TERMINAL BATTERY CABINET SYSTEM - CONFIG #315	2 OF 4
				JOB NO.	N/A	DATE:	03/04/2021		
				QUOTE NO.	N/A	DRAWN BY:	VZ	DRAWING NO. TLE5-28012V-480-7-7D400-AR-CJC-CONFIG#315	
				SCALE:	N.T.S.	APPR. BY:			

CAUTION: HIGH VOLTAGE, RISK OF ELECTRICAL SHOCK

- FOLLOW ALL SAFETY PRECAUTIONS WHEN WORKING ON THIS SYSTEM
- ALWAYS WEAR PROPER SAFETY EQUIPMENT INCLUDING EYE PROTECTION

- CAUTION: HIGH VOLTAGE, RISK OF ELECTRICAL SHOCK**

 - FOLLOW ALL SAFETY PRECAUTIONS WHEN WORKING ON THIS SYSTEM
 - ALWAYS WEAR PROPER SAFETY EQUIPMENT INCLUDING EYE PROTECTION



THE INFORMATION CONTAINED IN THIS DRAWING IS THE SOLE PROPERTY OF INTRAPACK INDUSTRIES INC. ANY REPRODUCTION IN PART OR WHOLE WITHOUT THE WRITTEN PERMISSION OF INTRAPACK INDUSTRIES INC. IS PROHIBITED.

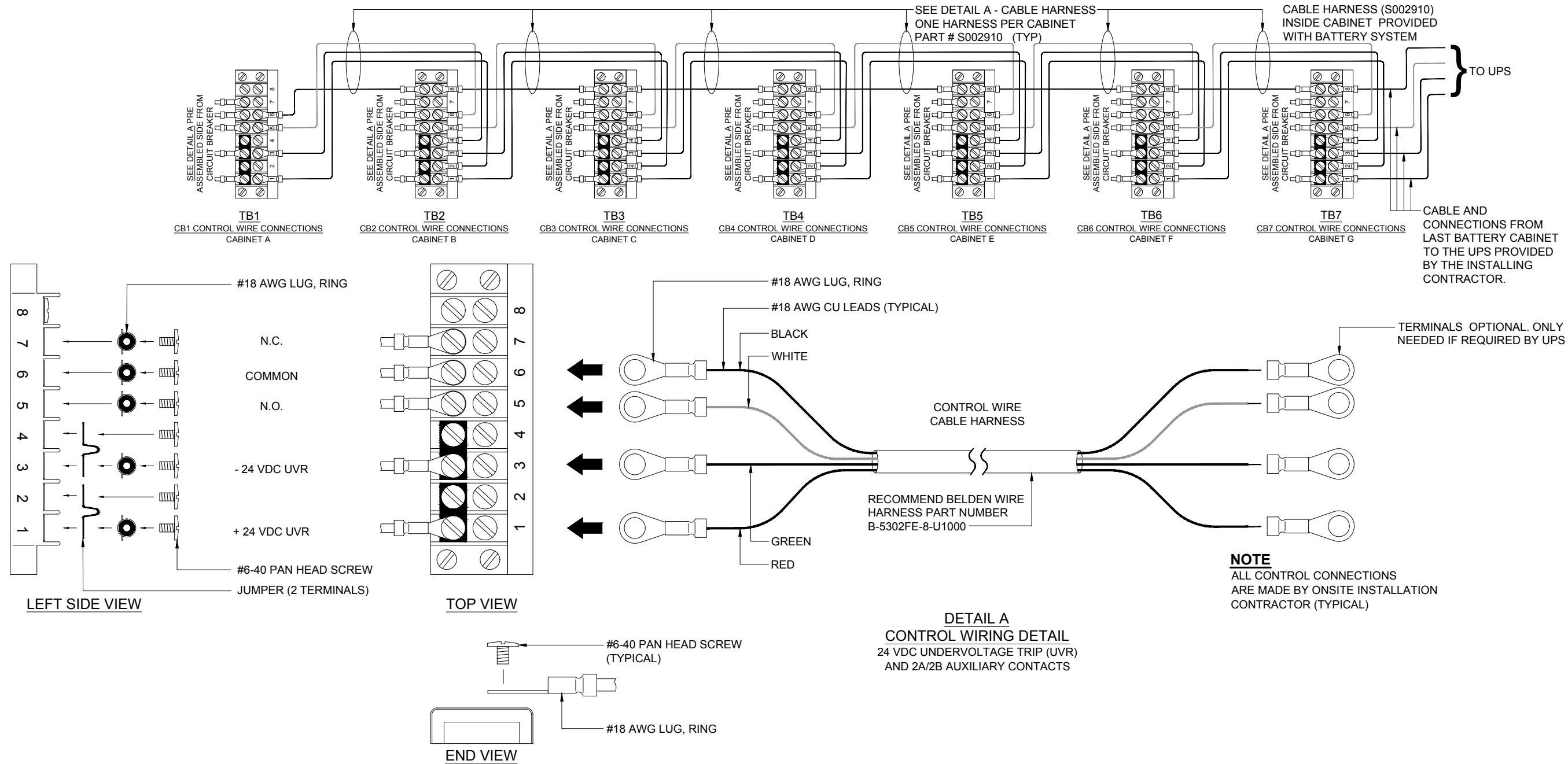
NO.	DATE	REVISION DESCRIPTION	 <p>DESIGNED AND MANUFACTURED BY INTRAPACK FOR ABB © INTRAPACK 2021</p>	SYSTEM WEIGHT: 4,725 lbs NO BATTERIES				ADJACENT REMOTE TOP TERMINAL BATTERY CABINET SYSTEM - CONFIG #315	<div>3</div> <div>OF</div> <div>4</div>
				JOB NO.	N/A	DATE:	03/04/2021		
				QUOTE NO.	N/A	DRAWN BY:	VZ	DRAWING NO. TLE5-28012V-480-7-7D400-AR-CJC-CONFIG#315	
				SCALE:	N.T.S.	APPR. BY:			

ADJACENT BATTERY CABINET SYSTEM:
ALL CABLE HARNESSSES ARE PROVIDED IN BOTH THE BATTERY CABINET TO BATTERY CABINET CONNECTION INCLUDING THE BATTERY CABINET CABLE HARNESS TO THE UPS.

ADJACENT REMOTE BATTERY CABINET SYSTEM:
ALL CABLE HARNESSSES FROM BATTERY CABINET TO BATTERY CABINET WILL BE PROVIDED. THE BATTERY CABINET TO UPS CABLE HARNESS WILL BE PROVIDED BY THE INSTALLING CONTRACTOR.

REMOTE BATTERY CABINET SYSTEM:
ALL CABLE HARNESSSES FROM BATTERY CABINET TO BATTERY CABINET AND BATTERY CABINET TO UPS WILL BE PROVIDED BY THE INSTALLING CONTRACTOR.

CONTROL WIRING ROUTING



THE INFORMATION CONTAINED IN THIS DRAWING IS THE SOLE PROPERTY OF INTRAPACK INDUSTRIES INC. ANY REPRODUCTION IN PART OR WHOLE WITHOUT THE WRITTEN PERMISSION OF INTRAPACK INDUSTRIES INC. IS PROHIBITED.														
NO.	DATE	REVISION DESCRIPTION				<div>ABB</div> <div>DESIGNED AND MANUFACTURED BY INTRAPACK FOR ABB © INTRAPACK 2021</div>		SYSTEM WEIGHT: 4,725 lbs NO BATTERIES				ADJACENT REMOTE TOP TERMINAL BATTERY CABINET SYSTEM - CONFIG #315		4 OF 4
								JOB NO.	N/A	DATE:	03/04/2021			
								QUOTE NO.	N/A	DRAWN BY:	VZ	DRAWING NO.		
								SCALE:	N.T.S.	APPR. BY:		TLE5-28012V-480-7-7D400-AR-CJC-CONFIG#315		