

266 models

Pressure transmitters



Engineered solutions for all applications

Measurement made easy

—
266 models

Introduction

The 2600T family provides comprehensive range of top quality pressure measurement products, specifically designed to meet the widest range of applications ranging from arduous conditions in offshore oil and gas to the laboratory environment of the pharmaceutical industry.

This spare parts list contains:

- 6 exploded diagrams of the 266 models pressure transmitters for easy identification of parts
- 1 table of available spare items

For more information

Further publications for 2600T series pressure products are available for free download from: www.abb.com/pressure

or by scanning this code:



Transmitter components overview

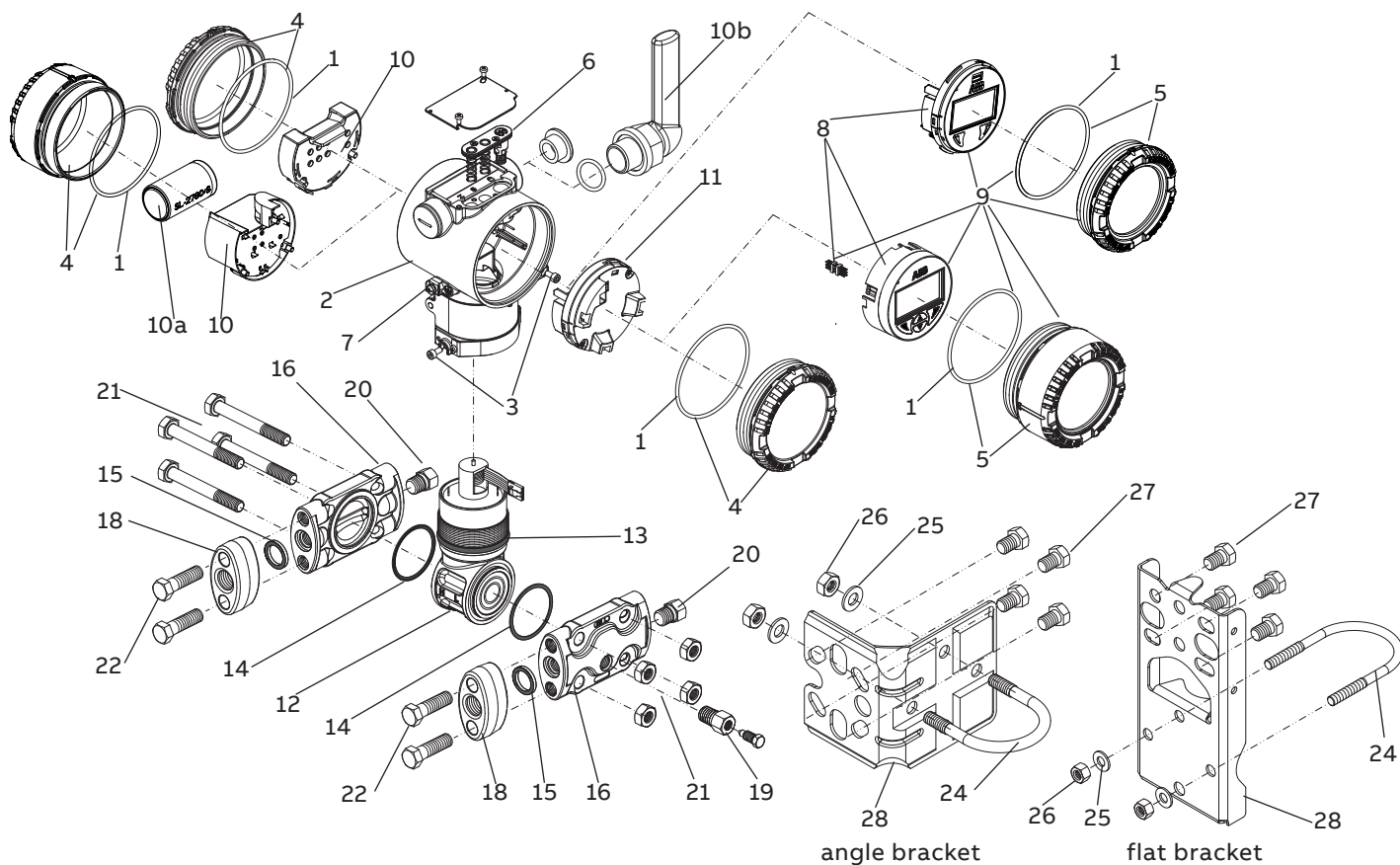


Figure 1 DP style transmitter with barrel housing

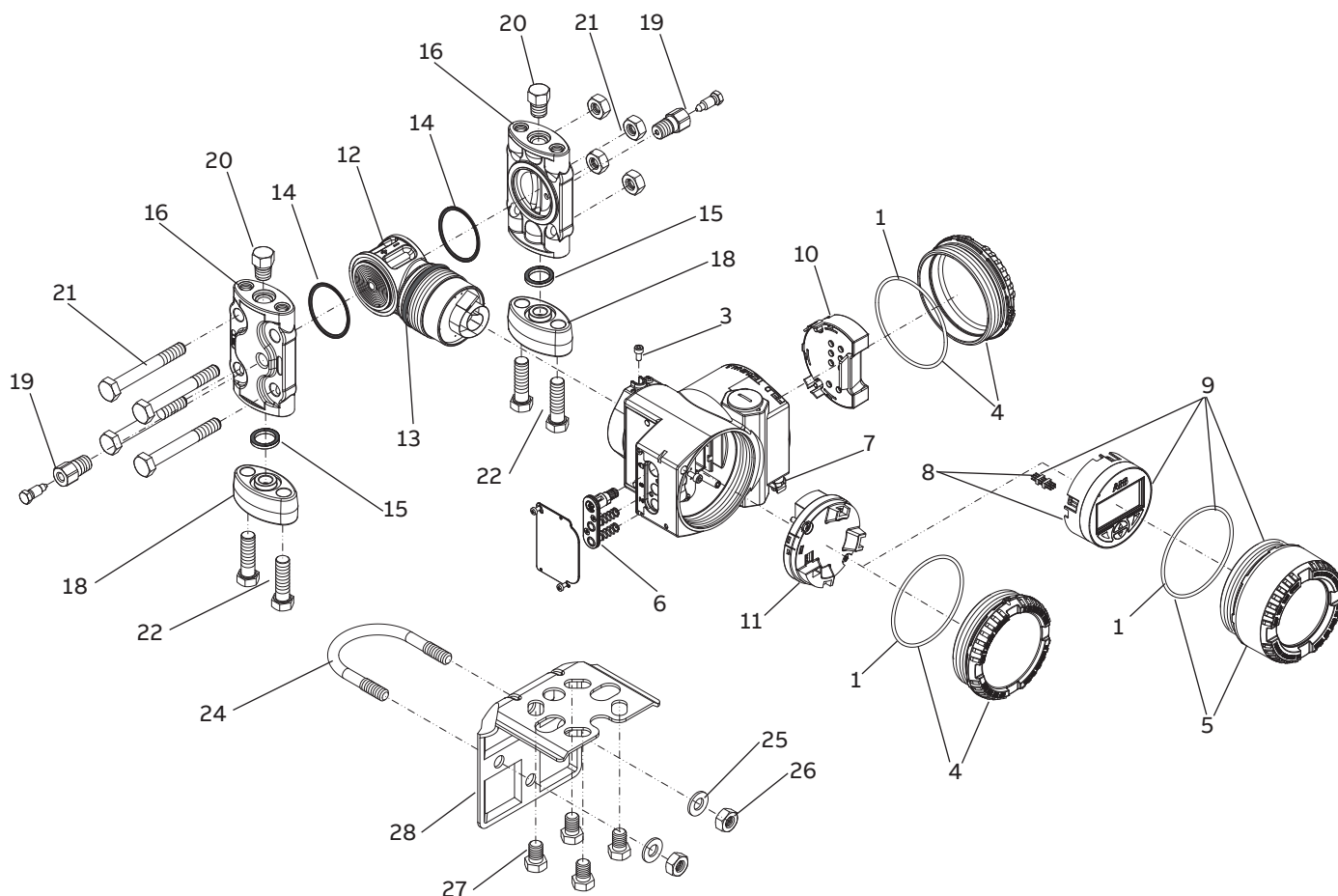


Figure 2 DP style transmitter with DIN housing

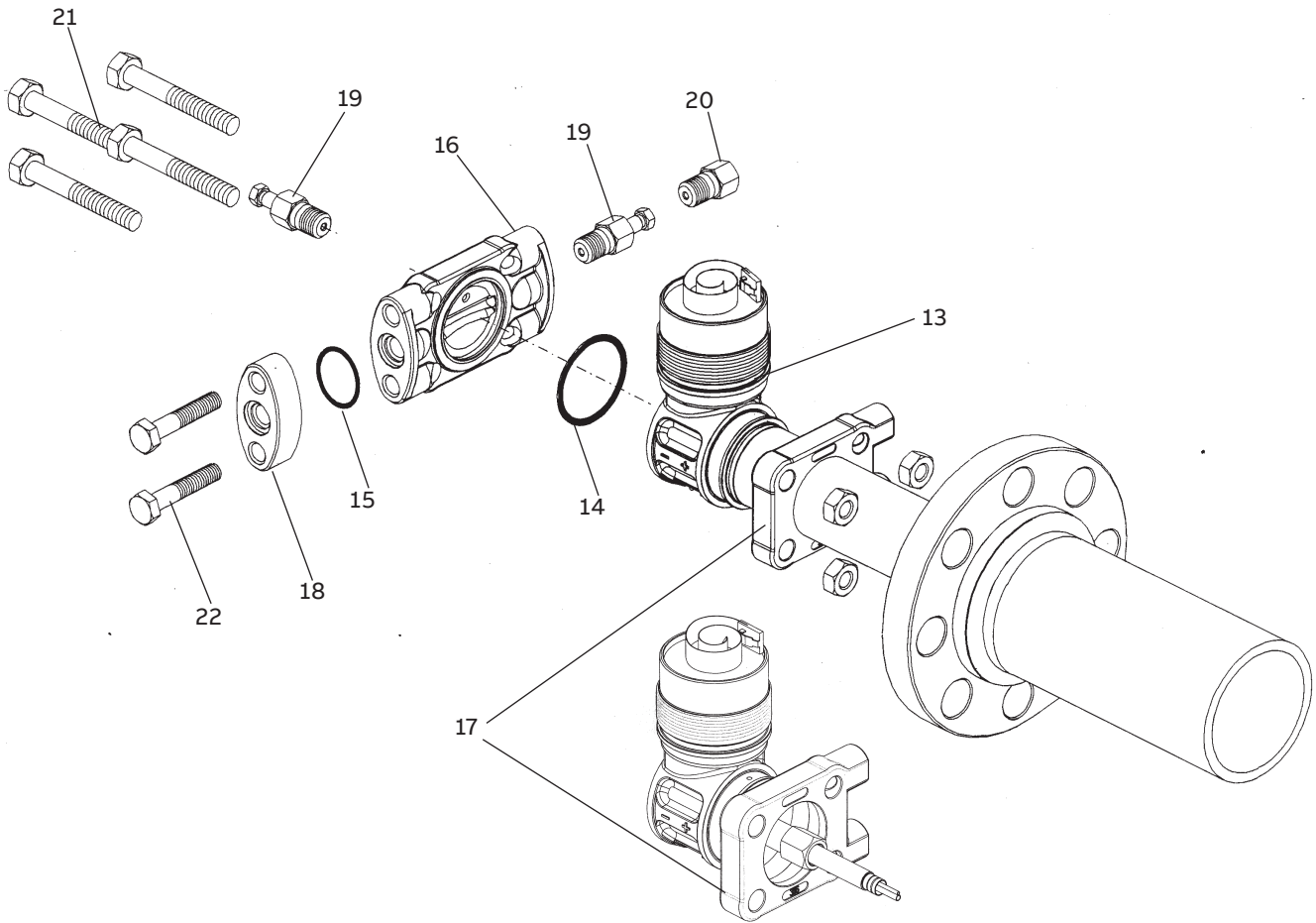


Figure 3 DP style transmitter bottom works of model 266DDH (direct mount seal) or 266DRH (remote seal)

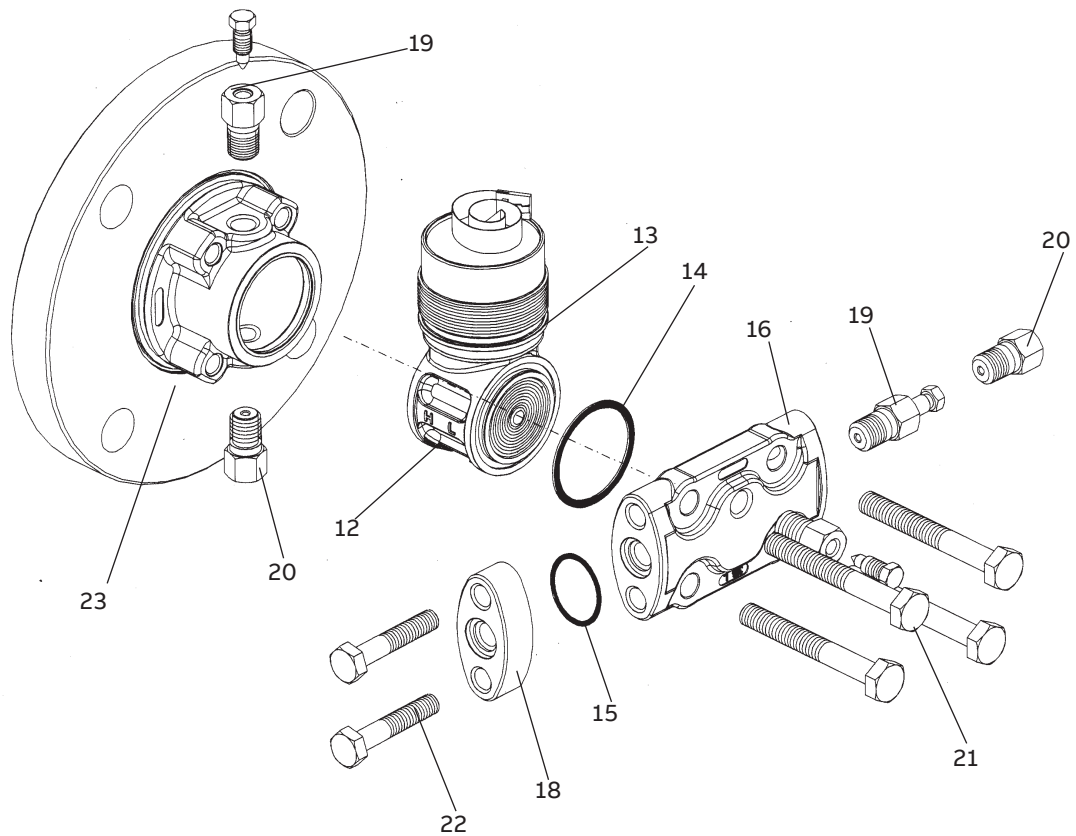


Figure 4 DP style transmitter bottom works of model 266DHH

...Transmitter components overview

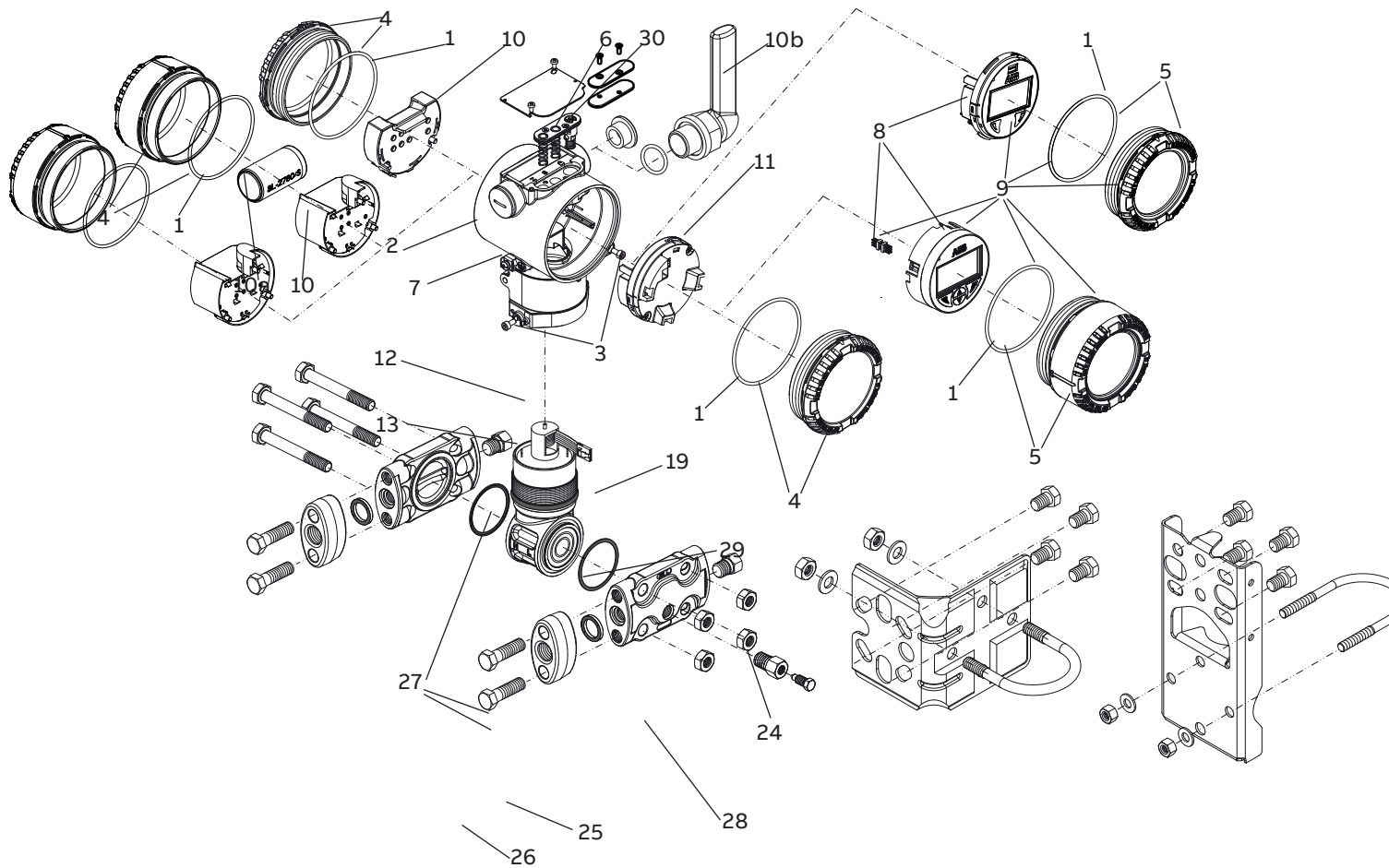


Figure 5 P style transmitter with barrel housing

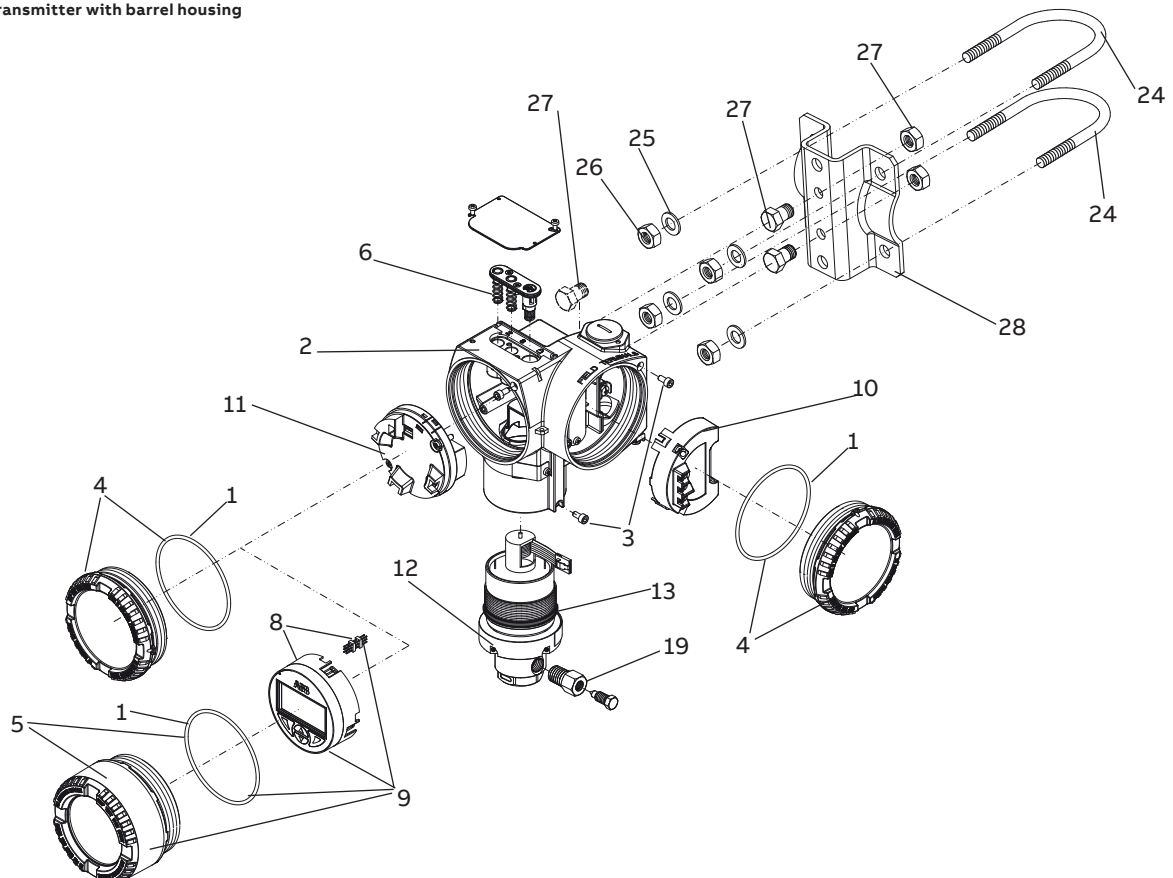


Figure 6 P style transmitter with DIN housing

Parts identification

Item	Description	Part no.	Quantity per device
1	Package of 2 O-rings for covers	DR1000	1
2	Housing (INCLUDES ITEMS 3, 6 AND 7)		1
	FOR ALL	- Barrel 1/2 in. - 14 NPT in aluminium	DR1001
	266 MODELS with	- Barrel M20 in aluminium	DR1002
	version different	- Barrel 1/2 in. - 14 NPT in AISI 316 L ss	DR1003
	form WirelessHART	- Barrel M20 in AISI 316 L ss	DR1004
	and EXCEPT	- Barrel 1/2 in. - 14 NPT in AISI 316 L ss painted	DR3035
	models 266Cxx	- Barrel M20 in AISI 316 L ss painted	DR3036
	and 266Jxx	- DIN M20 in aluminium for P style transmitters	DR1005
		- DIN M20 in aluminium for DP style transmitters	DR1006
	FOR 266 MODELS	- Barrel M20 in aluminium	DR3043
	WirelessHART	- Barrel M20 in AISI 316 L ss	DR3044
	version	- Barrel M20 in AISI 316 L ss painted	DR3045
	FOR MODELS	- Barrel 1/2 in. - 14 NPT in aluminium	DR3013
	266Cxx	- Barrel M20 in aluminium	DR3014
	and 266Jxx	- Barrel 1/2 in. - 14 NPT in AISI 316 L ss	DR3015
		- Barrel M20 in AISI 316 L ss	DR3016
		- DIN M20 in aluminium for DP style transmitters	DR3017
	FOR 266 DDS	- Barrel 1/2 in. - 14 NPT in aluminium - Primary Unit	3KXP001180L0400
	MODELS	- Barrel M20 in aluminium - Primary Unit	3KXP001180L0300
		- Barrel 1/2 in. - 14 NPT in AISI 316 L ss - Primary Unit	3KXP001180L0200
		- Barrel M20 in AISI 316 L ss - Primary Unit	3KXP001180L0100
	Housing (INCLUDES ITEMS 3, 7 AND 30)		1
	FOR 266 DDS	Barrel 1/2 in. - 14 NPT in aluminium - Secondary Unit	3KXP001178L0400
	MODELS	Barrel M20 in aluminium - Secondary Unit	3KXP001178L0300
		Barrel 1/2 in. - 14 NPT in AISI 316 L ss - Secondary Unit	3KXP001178L0200
		Barrel M20 in AISI 316 L ss - Secondary Unit	3KXP001178L0100
3	Kit: locking screws for covers and tang	DR1007	1
4	Blind cover complete of O-ring		1 - 2
	- Aluminium (short design for all versions except WirelessHART and 266 DDS)	DR1008	
	- AISI 316 L ss (short design for all versions except WirelessHART and 266 DDS)	DR1009	
	- AISI 316 L ss painted (short design for all versions except WirelessHART and 266 DDS)	DR3037	
	- Aluminium (long design for WirelessHART and 266 DDS version)	DR3046	
	- AISI 316 L ss (long design for WirelessHART and 266 DDS version)	DR3047	
	- AISI 316 L ss painted (long design for WirelessHART and 266 DDS version)	DR3048	
5	Windowed cover complete of O-ring		0 - 1
	- Aluminium for integral display standard	DR1010	
	- Aluminium for integral display TTG Through-The-Glass	DR1011	
	- Aluminium (short design) for integrated digital display	DR3069	
	- AISI 316 L ss for integral display standard	DR1012	
	- AISI 316 L ss for integral display TTG Through-The-Glass	DR1013	
	- AISI 316 L ss (short design) for integrated digital display	DR3070	
	- AISI 316 L ss painted for integral display standard	DR3038	
	- AISI 316 L ss painted for integral display TTG Through-The-Glass	DR3039	
6	Kit push button (zero and span)	DR1014	1
7	Kit: external earth connection assembly	DR1015	1
8	Digital LCD integral display with integrated keypad and connector	DR1016	0 - 1
	Digital LCD integral display with TTG (Through-The-Glass) activated keypad and connector	DR1017	0 - 1
	Standard Digital LCD integral display and connector	DR3025	0 - 1
	Integrated digital LCD display with pushbutton (including removing tool)	DR3071	0 - 1
	Integrated digital LCD display suitable for external pushbuttons (including removing tool)	DR3072	0 - 1

...Parts identification

Item	Description	Part no.	Quantity per device	
9	Digital LCD integral display with integrated keypad kit with windowed aluminium cover and “O” ring	DR1018	0 - 1	
	Digital LCD integral display with integrated keypad kit with windowed AISI cover and “O” ring	DR1019	0 - 1	
	Digital LCD integral display with integrated keypad kit with windowed AISI painted cover and "O" ring	DR3040	0 - 1	
	Digital LCD integral display with TTG activated keypad kit with windowed aluminium cover and "O" ring	DR1020	0 - 1	
	Digital LCD integral display with TTG activated keypad kit with windowed AISI cover and “O” ring	DR1021	0 - 1	
	Digital LCD integral display with TTG activated keypad kit with windowed AISI painted cover and “O” ring	DR3041	0 - 1	
	Standard Digital LCD integral display kit with windowed aluminium cover and "O" ring	DR3026	0 - 1	
	Standard Digital LCD integral display kit with windowed AISI cover and “O” ring	DR3027	0 - 1	
	Standard Digital LCD integral display kit with windowed AISI painted cover and “O” ring	DR3042	0 - 1	
	Integrated digital LCD display with pushbutton kit with windowed aluminium cover and “O” ring	DR3073	0 - 1	
	Integrated digital LCD display suitable for ext. pushbuttons kit with windowed aluminium cover and “O” ring	DR3074	0 - 1	
	Integrated digital LCD display with pushbutton kit with windowed AISI cover and “O” ring	DR3075	0 - 1	
Integrated digital LCD display suitable for ext. pushbuttons kit with windowed AISI cover and “O” ring	DR3076	0 - 1		
10	FOR ALL	Terminal block assembly (HART versions)	DR1022	1
	266 MODELS	Terminal block assembly (HART versions) in compliance with NAMUR NE 021 (2004)	DR3063	
	EXCEPT models	Terminal block assembly (HART versions) with surge protector	DR1023	1
	266Cxx, 266Jxx	Terminal block assembly (Profibus and FF versions)	DR1025	1
	and 266 DDS	Terminal block assembly (Profibus and FF versions) with surge protector	DR1026	1
	FOR MODELS	Terminal block assembly (HART versions)	DR3018	1
	266Cxx and 266Jxx	Terminal block assembly (Modbus version) with surge protector	DR3079	1
	FOR 266 DDS	Terminal block assembly (HART versions) in compliance with NAMUR NE 021 (2004)	3KXP001170L0100	1
	MODELS	Terminal block assembly (HART versions) with surge protector, NOT in compliance with NAMUR NE 021 (2004)	3KXP001170L0200	1
		Battery holder for 266 models WirelessHART version	DR3050	1
10a	Battery for 266 models WirelessHART version	DR3051	1	
10b	Antenna for 266 models WirelessHART version	DR3052	1	
11	Secondary electronics module:			1
	FOR ALL	- Secondary electronic module HART	DR3053	
	266 MODELS	(Advanced functionality output code H, 1 – P/N AU3074)		
	EXCEPT models	- Secondary electronic module HART SIL2-certified	AR3900	
	266Cxx, 266Jxx	(Safety acc. IEC61508 output code T, 8 – P/N AU3074)		
	and 266 DDS	- Secondary electronic module Foundation Fieldbus ITK6	3KQZ207146L0100	
		(output code F, 3 – P/N AU3072)		
		- Secondary electronic module Profibus PA (output code P, 2 – P/N AU3098)	DR1029	
	FOR MODELS	- Secondary electronic module HART (output code H, 1 – P/N AU3111)	DR3077	
	266Cxx and 266Jxx	- Secondary electronic module HART SIL2-certified	AR3901	
		(Safety acc. IEC61508 ; output code T, 8 – P/N AU3111)		
		- Secondary electronic module Modbus (output code N, 6 – P/N 3KXP000008U0200)	DR3078	
	FOR 266 DDS	- HART for Primary Unit (Output code D and configuration code NM, NF)	3KXP001176L0100	
	MODELS	- HART for SIL version Primary Unit (Output code S and configuration code NM, NF)	3KXP001176L0200	
		- HART for Secondary Unit (Output code D and configuration code NS, NG)	3KXP001172L0100	
11	Connection board:			1
	FOR 266 MODELS WirelessHART (output code W, 9)		DR3049	
12	Transducer assembly		Outdated	
13	"O" ring of transducer		Outdated	
14	Package of 2 “O” ring for process flange			1
	- Viton (DP Style transmitters except model 266DSH (high static version), 266Mxx, 266Cxx, 266Jxx)		DR0167	
	- PTFE (DP Style transmitters except model 266DSH (high static version), 266Mxx, 266Cxx, 266Jxx)		DR0168	
	- Viton (only for transmitters model 266DSH high static version)		DR3033	
	- PTFE (only for transmitters model 266DSH high static version)		DR3034	
	- Buna (only for transmitters model 266Mxx, 266Cxx, 266Jxx)		DR0222	
	- EPDM (only for transmitters model 266Mxx, 266Cxx, 266Jxx)		DR0223	
	- Viton (only for transmitters model 266Mxx, 266Cxx, 266Jxx)		DR0224	
	- PTFE (only for transmitters model 266Mxx, 266Cxx, 266Jxx)		DR0225	
15	Package of 2 “O” ring for flange adapter			1
	- Viton		DR0015	
	- PTFE		DR0033	

Item	Description	Model	AISI 316 L ss	Hastelloy C	Monel 400	Quantity per device
16	Process flange (horizontal connection) with 1/4 in.-18 NPT connection and fittings for valve on side and plug on axis	266DSH/PSH	PN0461	PN0463	PN0465	2
		266VSH/DDH/DRH/DHH	PN0461	PN0463	PN0465	1
		266MSH	PN0611	PN0612	PN0613	2
		266MSx/CSx/JSx	736753	736759	736765	2
		266RST/MDx/CRx/JRx	736753	736759	736765	1
	Process flange (horizontal connection) with 1/4 in.-18 NPT connection and fitting for valve on axis	266DSH/PSH	PN0460	PN0462	PN0464	2
		266DSH HIGH STATIC	PN3043	N/A.	N/A.	
		266VSH/DDH/DRH/DHH	PN0460	PN0462	PN0464	1
		266MSH	736752	736758	736764	2
		266MSx/CSx/JSx	736752	736758	736764	2
		266RST/MDx/CRx/JRx	736752	736758	736764	1
	Process flange (vertical connection) with 1/4 in.-18 NPT	266DSH/PSH	PN0620	PN0621	PN0622	2
		266VSH	PN0620	PN0621	PN0622	1
	Process flange (vertical connection) without fittings for valve on side					
		266DSH/PSH	PN0626	PN0628	PN0630	2
		266VSH	PN0626	PN0628	PN0630	1
		266MSx/CSx/JSx	8150893	N/A	N/A.	2
		266RST/MDx/CRx/JRx	8150893	N/A	N/A.	1
	Process flange (vertical connection) with 1/4 in.-18 NPT	266DSH/PSH	PN0627	PN0629	PN0631	2
		266VSH	PN0627	PN0629	PN0631	1
	Process flange (vertical connection) with fitting on bottom for valve on side					
17	Blind flange for reference side of absolute Tx and side with seal (horizontal connection)	266VSH/DDH/DRH	PN0466	N/A	N/A.	1
	Blind flange for reference side of absolute Tx and side with seal (vertical connection)	266VSH/DDH/DRH	PN0625	N/A	N/A.	1
18	Flange adapter	ALL	PN0060	PN0066	PN0072	1 - 2
19	Kit: drain/vent valve (seat and stem)	ALL	AV3017	AV3019	AV3018	1 - 2
20	Plug	ALL	PN3057	PN3060	PN3061	1 - 2

Item	Description	Model	AISI 316 L ss	AISI 316 ss NACE	Alloy steel	Quantity per device
21	Kit: bolts and nuts for process flanges	ALL DP STYLE WITH FOLLOWING EXCEPTIONS	DR0007	DR0103	DR0307	1
		266Mxx, 266Cxx, 266Jxx	-	DR0221	-	1
		266DSH high static version	DR3030	DR3031	DR3032	1
22	Kit: bolts for adapter	ALL	DR0013	DR0106	DR0308	1 - 2

Item	Description	Model	ASME CL 150	ASME CL 300	EN PN 16	EN PN 40	Quantity per device
23	Mounting flange for 266DHH:	266DHH					1
	- 2 in. (ASME) / DN 50 (EN)		AR0331	AR0334	AR0333	AR0333	
	- 3 in. (ASME) / DN 80 (EN)		AR0332	AR0335	AR0336	AR0337	

...Parts identification

Item	Description	Part no.	Quantity per device
24	U-bolt		1 - 2
	- M10 threads in carbon steel (FOR ANGLE BRACKET OF DP STYLE AND	MB3027	
	- M10 threads in AISI 316 L ss P STYLE TRANSMITTERS)	MB3028	
	- M8 threads in carbon steel (FOR FLAT BRACKET OF DP STYLE TRANSMITTERS)	MB3026	
	- M8 threads in AISI 316 L ss	MB3025	
25	Washers for U-bolt		2 - 4
	- M10 in AISI 316 L ss	20211838	
	- M8 in AISI 316 L ss	20211538	
26	Nuts for U-bolt		2 - 4
	- M10 in carbon steel	MB3029	
	- M10 in AISI 316 L ss	PN0098	
	- M8 in AISI 316 L ss	20101238	
27	Bolting for fixing the transmitter to the bracket		2 - 3 - 4
	- carbon steel screw (7/16 UNF) for DP style transmitter	31020527	
	- AISI 316 ss screw (7/16 UNF) for DP style transmitter	PN0181	
	- AISI 316 ss screw (M6) for P style transmitter with barrel housing	21180448	
	- AISI 316 ss washer (M6) for P style transmitter with barrel housing	20211238	
	- AISI 316 ss nut (M6) for P style transmitter with barrel housing	20111038	
	- AISI 316 ss screw (M8) for P style transmitter with DIN housing	MB3031	
	- AISI 316 ss washer (M8) for P style transmitter with DIN housing	20211538	
	- AISI 316 ss nut (M8) for P style transmitter with DIN housing	20101238	
28	Bracket		1
	- carbon steel (ANGLE TYPE) for DP style transmitter	PN3048	
	- AISI 316 L ss (ANGLE TYPE) for DP style transmitter	PN3052	
	- AISI 316 ss (FLAT TYPE) for DP style transmitter	AB51504180	
	- carbon steel for P style transmitter with aluminium barrel housing	PP3047	
	- AISI 316 L ss for P style transmitter with aluminium or AISI barrel housing	PP3048	
	- carbon steel for P style transmitter with aluminium DIN housing	PP3033	
	- AISI 316 L ss for P style transmitter with aluminium DIN housing	PP3032	

Item	Description	Part no.	Quantity per device
29	Adapter		1
	- carbon steel fitting for P style transmitter (MODELS 266Hxx/Nxx)	PP3049	
	- AISI 316 L ss fitting for P style transmitter (MODELS 266Hxx/Nxx)	PP3050	
24 to 29	Bracket kit (BRACKET COMPLETE OF PARTS FOR MOUNTING AND TX FIXING)		1
	- carbon steel (ANGLE TYPE FOR PIPE MOUNTING) for DP style transmitter	DR1046	
	- AISI 316 L ss (ANGLE TYPE FOR PIPE MOUNTING) for DP style transmitter	DR1042	
	- carbon steel (ANGLE TYPE FOR WALL MOUNTING) for DP style transmitter	DR1043	
	- AISI 316 L ss (ANGLE TYPE FOR WALL MOUNTING) for DP style transmitter	DR1044	
	- AISI 316 ss (FLAT TYPE FOR PIPE MOUNTING) for DP style transmitter	DR1047	
	- carbon steel for P style transmitter (MODELS 266Hxx/Nxx) with aluminium barrel housing	DR3009	
	- AISI 316 L ss for P style transmitter (MODELS 266Hxx/Nxx) with aluminium or AISI barrel housing	DR3010	
	- carbon steel for P style transmitter (MODELS 266Hxx/Nxx) with aluminium DIN housing	DR1032	
	- AISI 316 L ss for P style transmitter (MODELS 266Hxx/Nxx) with aluminium DIN housing	DR1034	
	- carbon steel for P style transmitter (MODELS 266Gxx/Axx) with aluminium barrel housing	DR3011	
	- AISI 316 L ss for P style transmitter (MODELS 266Gxx/Axx) with aluminium or AISI barrel housing	DR3012	
	- carbon steel for P style transmitter (MODELS 266Gxx/Axx) with aluminium DIN housing	DR1037	
	- AISI 316 L ss for P style transmitter (MODELS 266Gxx/Axx) with aluminium DIN housing	DR1039	
30	Kit placeholder pushbuttons for Secondary DDS unit	3KXP001183L0100	1

ABB Measurement & Analytics

For your local ABB contact, visit:

abb.com/contacts

For more product information, visit:

abb.com/measurement

We reserve the right to make technical changes or modify the contents of this document without prior notice. With regard to purchase orders, the agreed particulars shall prevail. ABB does not accept any responsibility whatsoever for potential errors or possible lack of information in this document.

We reserve all rights in this document and in the subject matter and illustrations contained therein. Any reproduction, disclosure to third parties or utilization of its contents – in whole or in parts – is forbidden without prior written consent of ABB.