

AC500-eCo CPU provides up to 12 DI, 6 DO, 2 DC, 2 Ethernet™ ports, and 3 option boards.

10+ communications modules

Leading Safety functionality

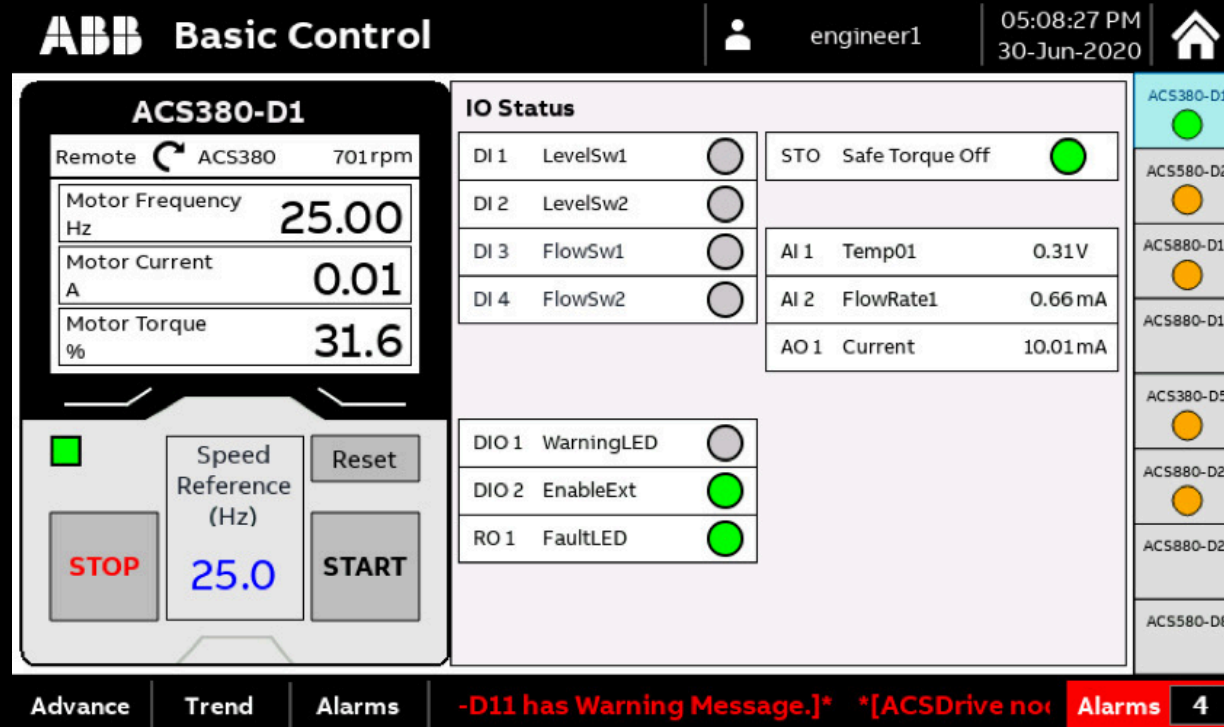
AC500 PLC provides on-board communications and up to 160 MB

AC500 CPUs are compatible with all modules. Safety, Hot Swap and other modules are available with the AC500 CPU.

Configurable (DI or DO), and Positioning modules increase flexibility. Available with Extreme Condition ratings.

Combine AC500 and AC500-eCo flexible I/O module types into the same system to efficiently meet your application needs.

Compact and efficient I/O modules are available in 24 VDC and 120/240 VAC.



Actual size 7" CP600 HMI with standard Drive Faceplate

ABB Automation Products

Helping OEMs build better machines

ABB is uniquely positioned to deliver superior, comprehensive automation solutions to meet your needs. As a global market leader in drives, motors, PACs, communications, and services, ABB has what it takes to fully support you with today's demanding industrial applications.

- Choose from over 20 communication protocols to access the network you need, from fieldbus, to enterprise, to IIoT.
- Easy IIoT integration with HTML5 web visualization and integrated OPC UA and MQTT.
- Extensive range of HMIs
- Standard Drive Faceplates to easily monitor, control, and diagnose drives from the HMI.
- All-compatible drives for interface, process, business, and environmental consistency.
- Drive Library provides programming for drive control and communication.
- Functional safety built in.



- Extreme condition PAC modules, drives, HMIs, and motors.

- 1, 2 or 3 Ethernet™ ports on every CPU and HMI. 2 port CPU units have integral switch.
- Commission, program, and simulate using a single tool for PACs, safety, drives, HMI, and networks.
- Complete controller line from the compact AC500-eCo PLC to the powerful AC500 PACs.
- Mix and match over 44 unique I/O modules to closely fit the application.
- Use the same programming software for all AC500 and AC500-eCo systems.



Actual size 2HP ACS380 Drive from the ABB All-Compatible Drive family

With you every step of the way

ABB's experts are on hand to offer technical advice from dimensioning through to energy saving. ABB and our partners can help with installation and commissioning, and throughout the operations and maintenance phases of the products' life cycle, providing preventive maintenance programs tailored to your customers' needs.

ABB includes both hardware and Software Security and is certified to the IEC 62443-4-2 standard.

