
Welcome at PB610 Panel Builder 600
Protocol "Ethernet/IP CIP"

This README-file contains important information about Protocol "Ethernet/IP CIP" for PB610 Panel Builder 600 V2.8.x.x.
Please, read the whole document, in order to get the newest information.

Main Features of PB610-V2.8-ETIP173

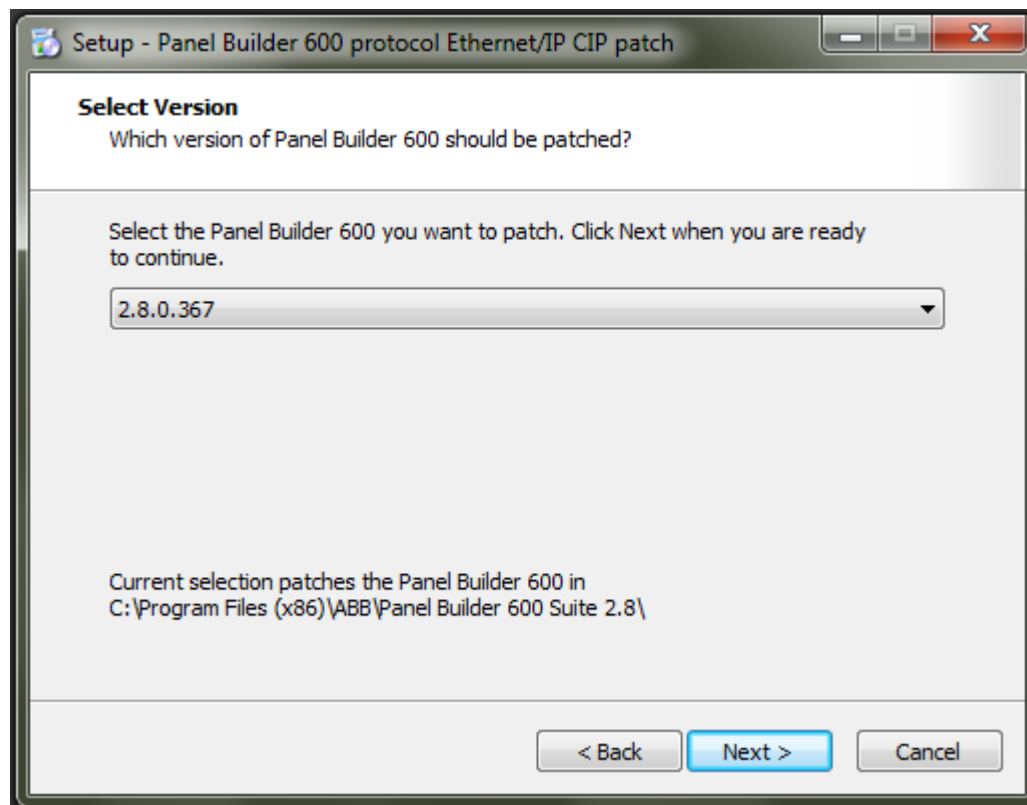
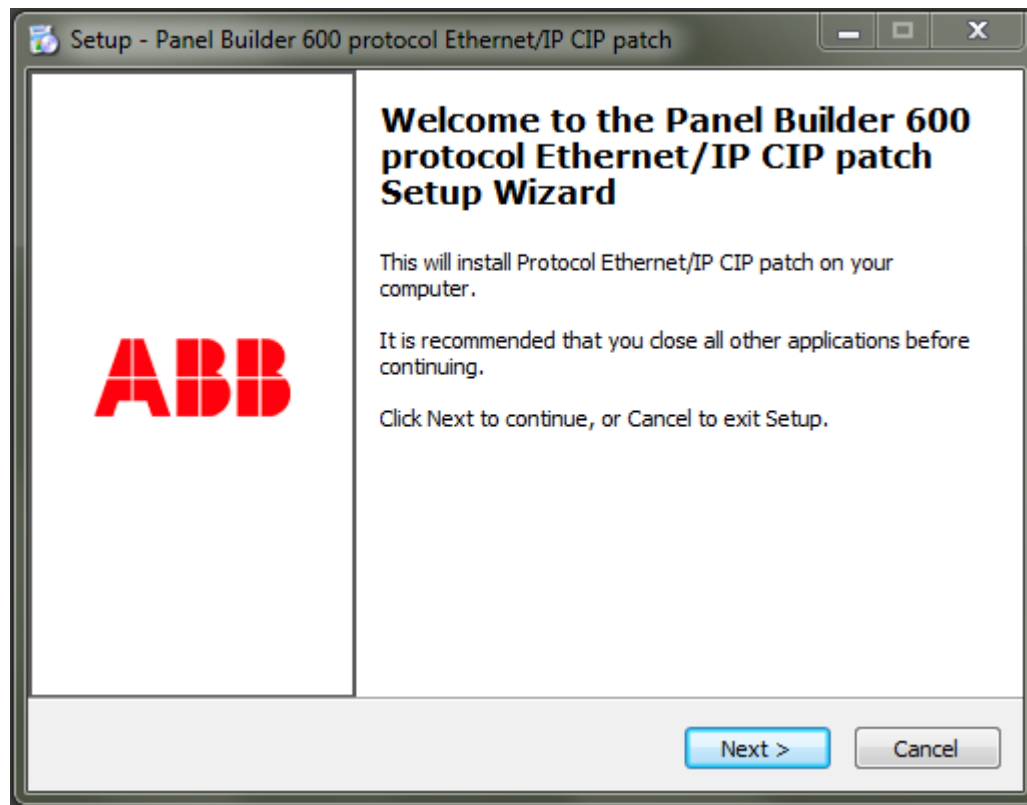
- PB610-V2.8-ETIP173.exe is an executable file, that adds Ethernet/IP CIP protocol to an existing PB610 Panel Builder 600 installation, version V2.8.x.x
- Ethernet/IP CIP protocol does support the communication to the following control systems:
 - Allen Bradley Logix 5000 control system
 - Omron Sysmac machine automation control

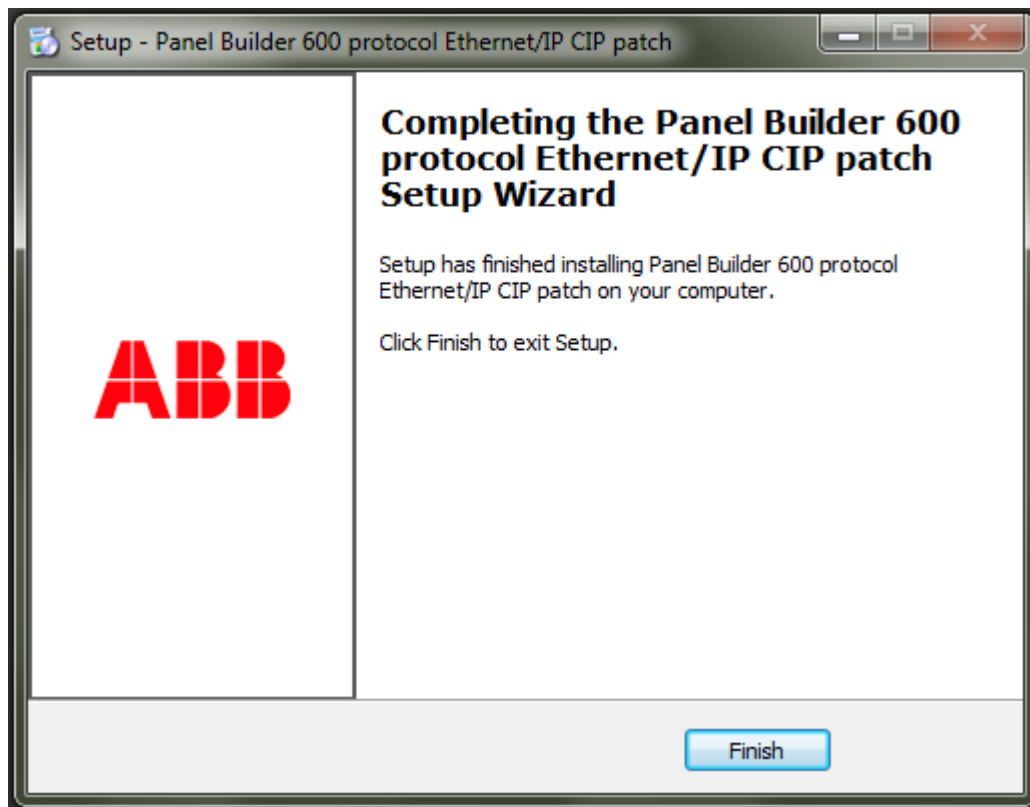
Requirements

- A PB610 Panel Builder 600 installation, version V2.8.x.x has to be available on the PC and has to be OFF.
- This protocol is supported by following CP600 control panels:
 - CP604, CP604-B, CP607, CP607-B, CP610, CP610-B starting from index A0
 - CP620, C630, CP635, CP635-B starting from index C3
 - CP651, CP661, CP665, CP676 starting from index A0
 - CP6605, CP6607, CP6610, CP6615, CP6621 from index A0The support of the protocols for control panels is enabled during production process in the factory. It cannot be enabled later on.

Installation

- When executing this file, PB610 V2.8.x.x installations in the PC are checked and user is asked to select the version, he wants to add the protocol to.
Setup:





- When installation is completed, the protocol will be available in PB610 engineering tool including online help

Known Issues and Limitations

- Update rates 1000 ms, 750 ms, 500 ms, 250 ms, 100 ms, 50 ms can be selected by the user. If selecting update rates shorter than 500 ms the real update rate keeps at 500 ms.