

PRODUCT ADVISORY LETTER

CBT primary bar mounting hole notification

March 17, 2022

The CBT/1, CBT-H and CBT-S are all different variations of the same 600 V current transformer (CT) used for metering applications. Each has different ratings and can have different internal designs, but the physical size, shape and appearance are the same. They are offered with an open window through which the the primary conductor can pass through the CT, but are more commonly used with a factory installed primary bar.

The width and thickness of the bar can change depending on the maximum current rating that it must carry, however the dimensions and locations of the stamped mounting holes remain the same. Section 5 of ANSI (NEMA) C12.11 specifies the hole sizes and dimensions for these types of small current transformers with 10 kV BIL. The ANSI standard specifies 10.875 (± 0.063) inches between centers of the round holes on the end of the CBT primary bar and 0.5 inches minimum between the center of the hole and the end of the primary bar.

The current inventory of copper bars is slightly shorter than the required length, and while the inventory is consumed there may be as little as 0.430 inches from the center of the hole to the end of the primary bar. Historically these would have been rejected and new bars ordered, however with global supply challenges for copper, and to minimize delivery impacts on our customers, these bars will be used until they are consumed.

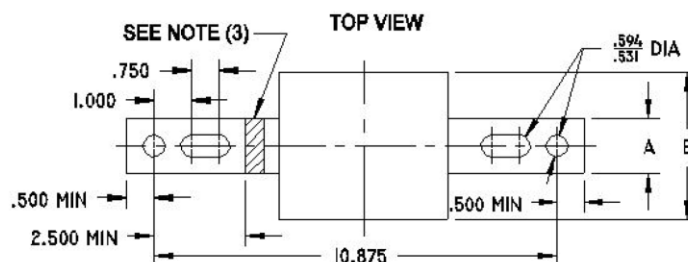
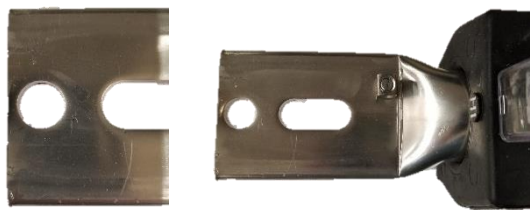


Figure 5 from ANSI (NEMA) C12.11 – “Small-Size Wound or Bar-Type Current Transformers, 10 kV BIL”



Bar type CBT/1, CBT-H and CBT-S



CBT bar with <0.5" from hole center to end of bar

These units meet or exceed all routine tests per IEEE C57.13 and pass all other inspections. There are no other deviations from the dimensions specified in ANSI C12.11.

Additional information

For more detailed information about the issue outlined herein or with any questions, contact your ABB sales representative or ABB Pinetops customer support at:

- Email: US-pinetops.customersupport@abb.com
- Phone: (252) 827-3212.