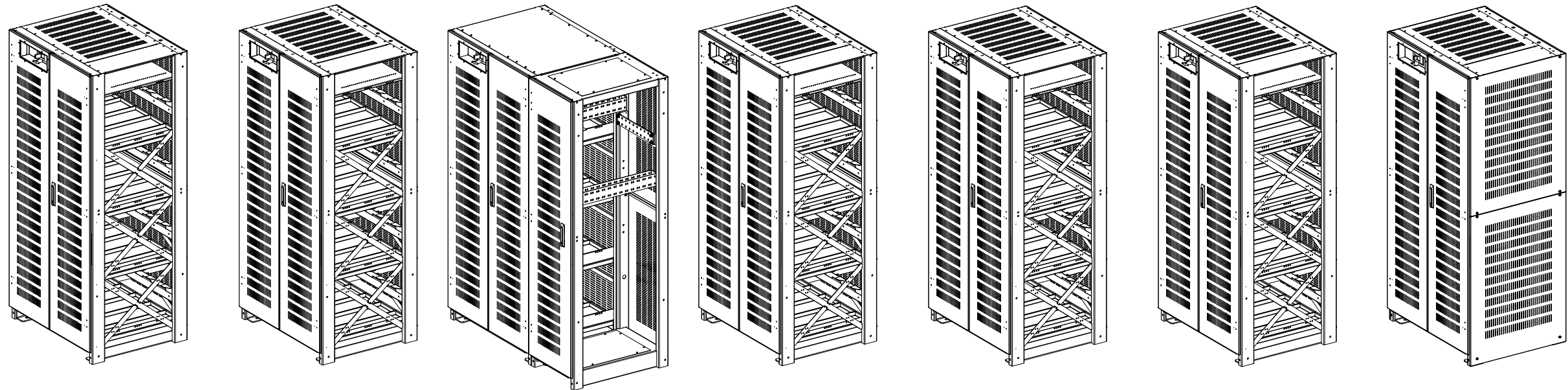


- CAUTION: HIGH VOLTAGE, RISK OF ELECTRICAL SHOCK
- FOLLOW ALL SAFETY PRECAUTIONS WHEN WORKING ON THIS SYSTEM
 - ALWAYS WEAR PROPER SAFETY EQUIPMENT INCLUDING EYE PROTECTION



CABINET A

CABINET B

CABINET C & CJC

CABINET D

CABINET E

CABINET F

CABINET G

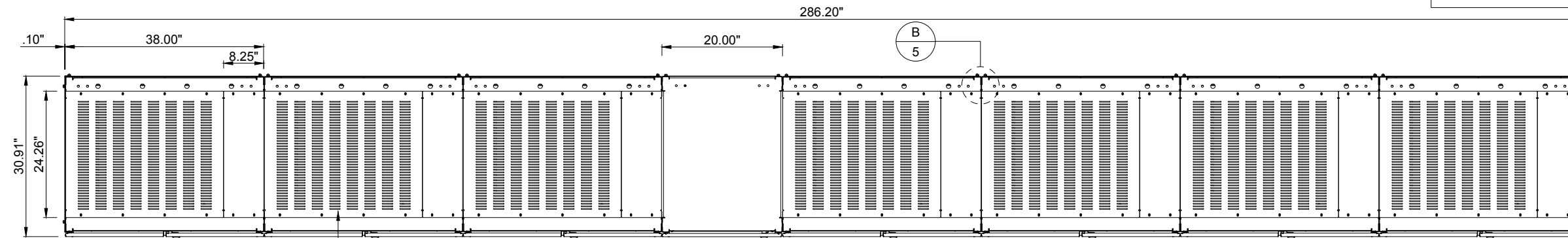
ISOMETRIC BATTERY CABINET VIEW

ABB MEGAFLEX UPS BATTERY SKU
MGD1500-7-49-ALT

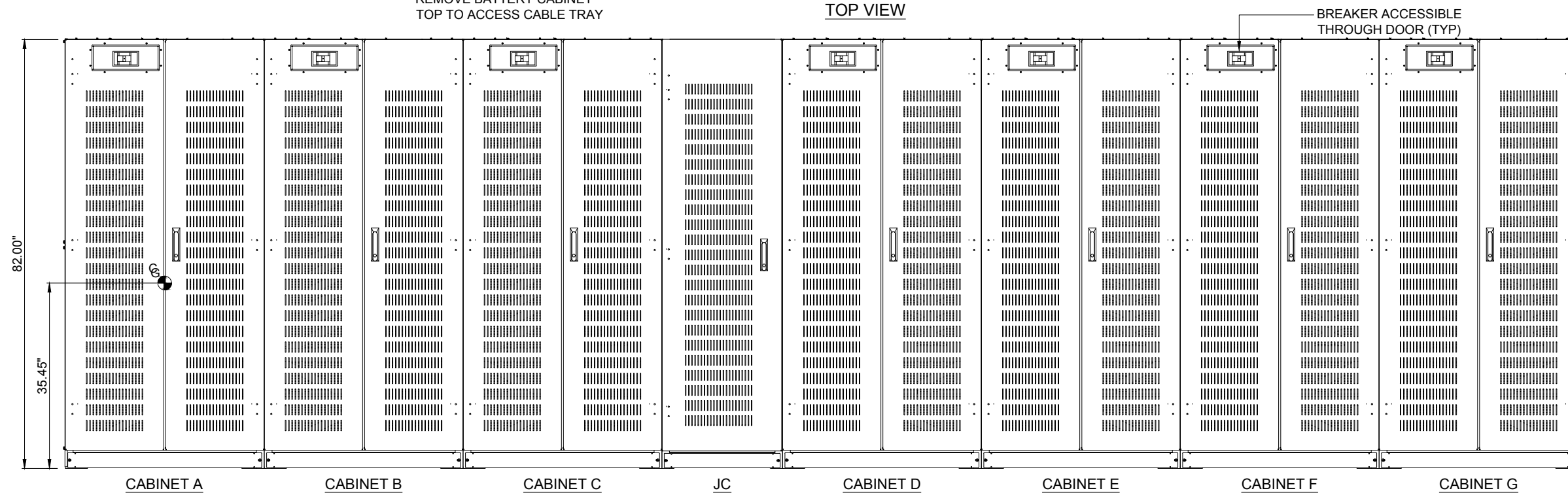
THE INFORMATION CONTAINED IN THIS DRAWING IS THE SOLE PROPERTY OF INTRAPACK INDUSTRIES INC. ANY REPRODUCTION IN PART OR WHOLE WITHOUT THE WRITTEN PERMISSION OF INTRAPACK INDUSTRIES INC. IS PROHIBITED.

NO.	DATE	REVISION DESCRIPTION	<div><div>IntraPack®</div><div>10650 MARKISON ROAD DALLAS, TX. 75238 PHONE: 214-348-7105 EMAIL: SALES@INTRAPACK.COM © INTRAPACK 2020</div><div>WWW.INTRAPACK.COM</div></div>	SYSTEM WEIGHT: 42,355 lbs				ADJACENT REMOTE TOP TERMINAL BATTERY CABINET SYSTEM		2 OF 6
								JOB NO.	N/A	
								DATE:	01/29/2021	
								DRAWN BY:	VZ	
								QUOTE NO.	IPC20-1034	
								SCALE:	N.T.S.	
								APPR. BY:		
									DRAWING NO.	
									IP5-280P545-480-7-7D600-AR-JC	

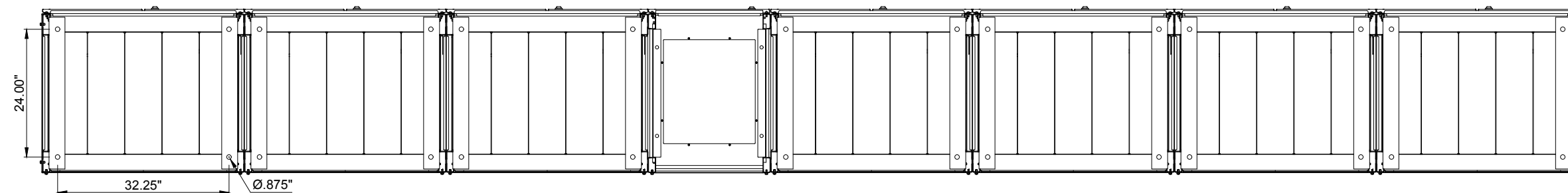
- FOLLOW ALL SAFETY PRECAUTIONS WHEN WORKING ON THIS SYSTEM
- ALWAYS WEAR PROPER SAFETY EQUIPMENT INCLUDING EYE PROTECTION



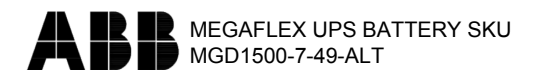
— REMOVE BATTERY CABINET
TOP TO ACCESS CABLE TRAY



SIDE VIEW



BOTTOM VIEW



NO.	DATE	REVISION DESCRIPTION

IntraPack® 10650 MARKISON ROAD
DALLAS, TX. 75238
PHONE: 214-348-7105
EMAIL: SALES@INTRAPACK.COM
© INTRAPACK 2020

SYSTEM WEIGHT: 42,355 lbs			
JOB NO.	N/A	DATE:	01/29/2021
QUOTE NO.	IPC20-1034	DRAWN BY:	VZ
SCALE:	N.T.S.	APPR. BY:	

	ADJACENT REMOTE TOP TERMINAL BATTERY CABINET SYSTEM
	DRAWING NO. IP5-280P545-480-7-7D600-AR-JC

3
OF
6

1

DC POWER CABLES FROM CJC TO THE UPS PROVIDED BY OTHERS. REFER TO NEC FOR PROPER AWG SIZE

2

TERMINAL BLOCK TO TERMINAL BLOCK AND TERMINAL BLOCK TO UPS CONTROL WIRING WILL BE 16-20 GA STRANDED, PROVIDED BY OTHERS

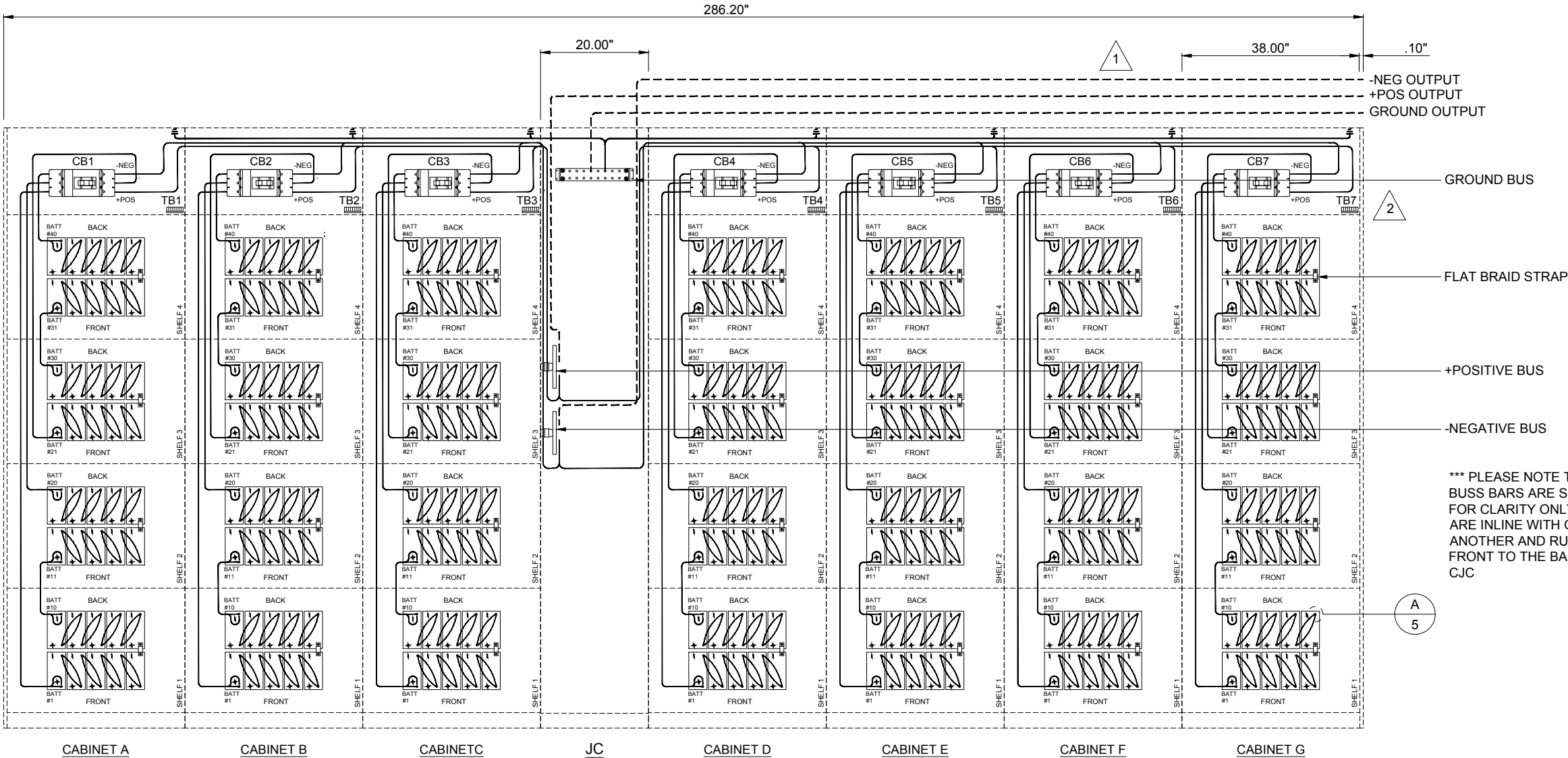
POSITIONING OF COMPONENTS ARE FOR ILLUSTRATION PURPOSES AND MAY NOT BE REPRESENTED IN THE EXACT LOCATION INDICATED.

CAUTION: HIGH VOLTAGE, RISK OF ELECTRICAL SHOCK

- FOLLOW ALL SAFETY PRECAUTIONS WHEN WORKING ON THIS SYSTEM
- ALWAYS WEAR PROPER SAFETY EQUIPMENT INCLUDING EYE PROTECTION

GENERAL NOTES:

- ONLY QUALIFIED TECHNICIANS SHOULD PERFORM INSTALLATION OR MAINTENANCE OF THIS BATTERY SYSTEM.
- ALL TOOLS SHOULD BE INSULATED TO PREVENT ELECTRICAL SHOCK.
- OPEN DISCONNECTS BEFORE INSTALLATION OR MAINTENANCE.
- CHECK DC VOLTAGE AT BATTERY OUTPUT AND UPS OUTPUT TO ENSURE PROPER POLARITY BEFORE MAKING FINAL CONNECTIONS.



ELECTRICAL ILLUSTRATION

ABB MEGAFLEX UPS BATTERY SKU
MGD1500-7-49-ALT

THE INFORMATION CONTAINED IN THIS DRAWING IS THE SOLE PROPERTY OF INTRAPACK INDUSTRIES INC. ANY REPRODUCTION IN PART OR WHOLE WITHOUT THE WRITTEN PERMISSION OF INTRAPACK INDUSTRIES INC. IS PROHIBITED.

NO.	DATE	REVISION DESCRIPTION

IntraPack

WWW.INTRAPACK.COM

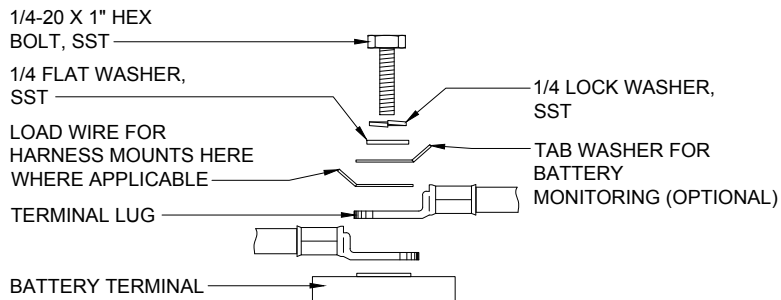
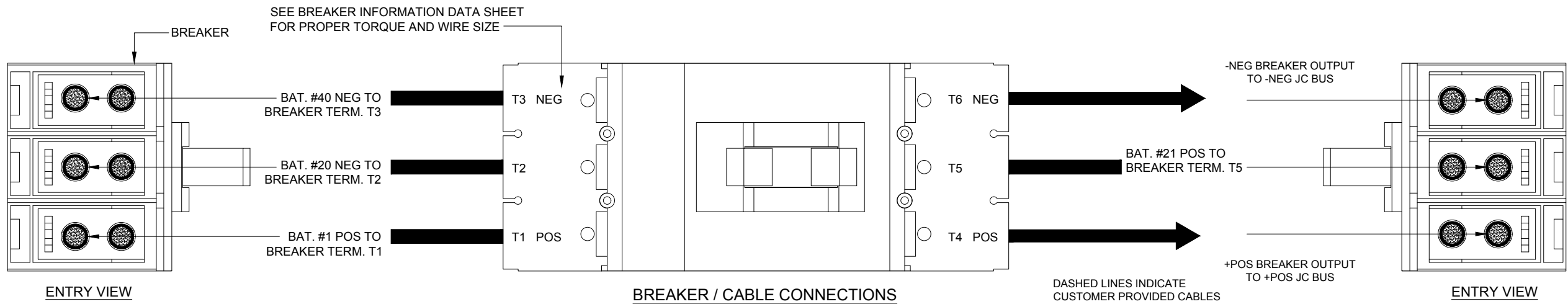
10650 MARKISON ROAD
DALLAS, TX. 75238
PHONE: 214-348-7105
EMAIL: SALES@INTRAPACK.COM
© INTRAPACK 2020

SYSTEM WEIGHT: 42,355 lbs			
JOB NO.	N/A	DATE:	01/29/2021
QUOTE NO.	IPC20-1034	DRAWN BY:	VZ
SCALE:	N.T.S.	APPR. BY:	

ADJACENT REMOTE TOP TERMINAL BATTERY CABINET SYSTEM	4 OF 6
DRAWING NO. IP5-280P545-480-7-7D600-AR-JC	

CAUTION: HIGH VOLTAGE, RISK OF ELECTRICAL SHOCK

- FOLLOW ALL SAFETY PRECAUTIONS WHEN WORKING ON THIS SYSTEM
- ALWAYS WEAR PROPER SAFETY EQUIPMENT INCLUDING EYE PROTECTION

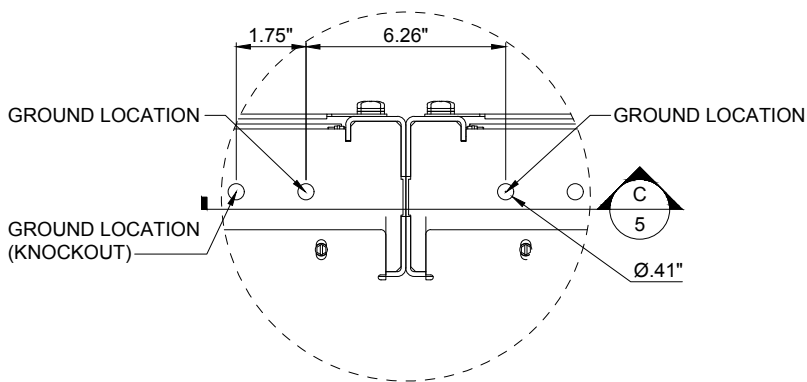


INSERT-TYPE POST (DYNASTY)

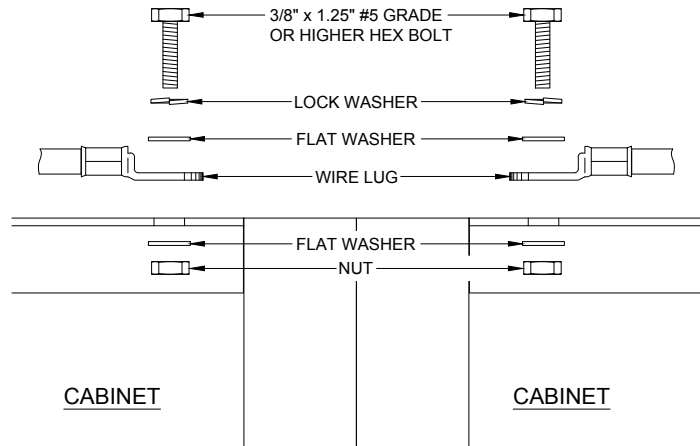
UPS12-305PLP, UPS12-355PLP, UPS12-405PLP,
UPS12-495PLP, UPS12-545PLP, UPS6-605PLP
TORQUE TO 110 IN-LBS.

MANUFACTURERS WEB SITE- <https://alpinepowersystems.com/backup-power-products/backup-batteries/ups-batteries/c-d-pure-lead-plus/>

DETAIL 'A'
REF: SHEET 4



DETAIL 'B'
REF: SHEET 3



*** GROUND WIRE AND CONNECTIONS TO BE SUPPLIED BY CUSTOMER. WIRE LENGTH AND SIZE DETERMINED BY CUSTOMER

DETAIL 'C'

ABB MEGAFLEX UPS BATTERY SKU
MGD1500-7-49-ALT

THE INFORMATION CONTAINED IN THIS DRAWING IS THE SOLE PROPERTY OF INTRAPACK INDUSTRIES INC. ANY REPRODUCTION IN PART OR WHOLE WITHOUT THE WRITTEN PERMISSION OF INTRAPACK INDUSTRIES INC. IS PROHIBITED.

NO.	DATE	REVISION DESCRIPTION	<div><div><div>IntraPack®</div><div>10650 MARKISON ROAD DALLAS, TX. 75238 PHONE: 214-348-7105 EMAIL: SALES@INTRAPACK.COM © INTRAPACK 2020</div></div><div>WWW.INTRAPACK.COM</div></div>	SYSTEM WEIGHT: 42,355 lbs				ADJACENT REMOTE TOP TERMINAL BATTERY CABINET SYSTEM	5 OF 6
				JOB NO.	N/A	DATE:	01/29/2021		
				QUOTE NO.	IPC20-1034	DRAWN BY:	VZ	DRAWING NO.	
				SCALE:	N.T.S.	APPR. BY:		IP5-280P545-480-7-7D600-AR-JC	

ADJACENT BATTERY CABINET SYSTEM:
ALL CABLE HARNESSES ARE PROVIDED IN BOTH THE BATTERY CABINET TO BATTERY CABINET CONNECTION INCLUDING THE BATTERY CABINET CABLE HARNESS TO THE UPS.

ADJACENT REMOTE BATTERY CABINET SYSTEM:
ALL CABLE HARNESSES FROM BATTERY CABINET TO BATTERY CABINET WILL BE PROVIDED. THE BATTERY CABINET TO UPS CABLE HARNESS WILL BE PROVIDED BY THE INSTALLING CONTRACTOR.

REMOTE BATTERY CABINET SYSTEM:
ALL CABLE HARNESSES FROM BATTERY CABINET TO BATTERY CABINET AND BATTERY CABINET TO UPS WILL BE PROVIDED BY THE INSTALLING CONTRACTOR.

CONTROL WIRING ROUTING

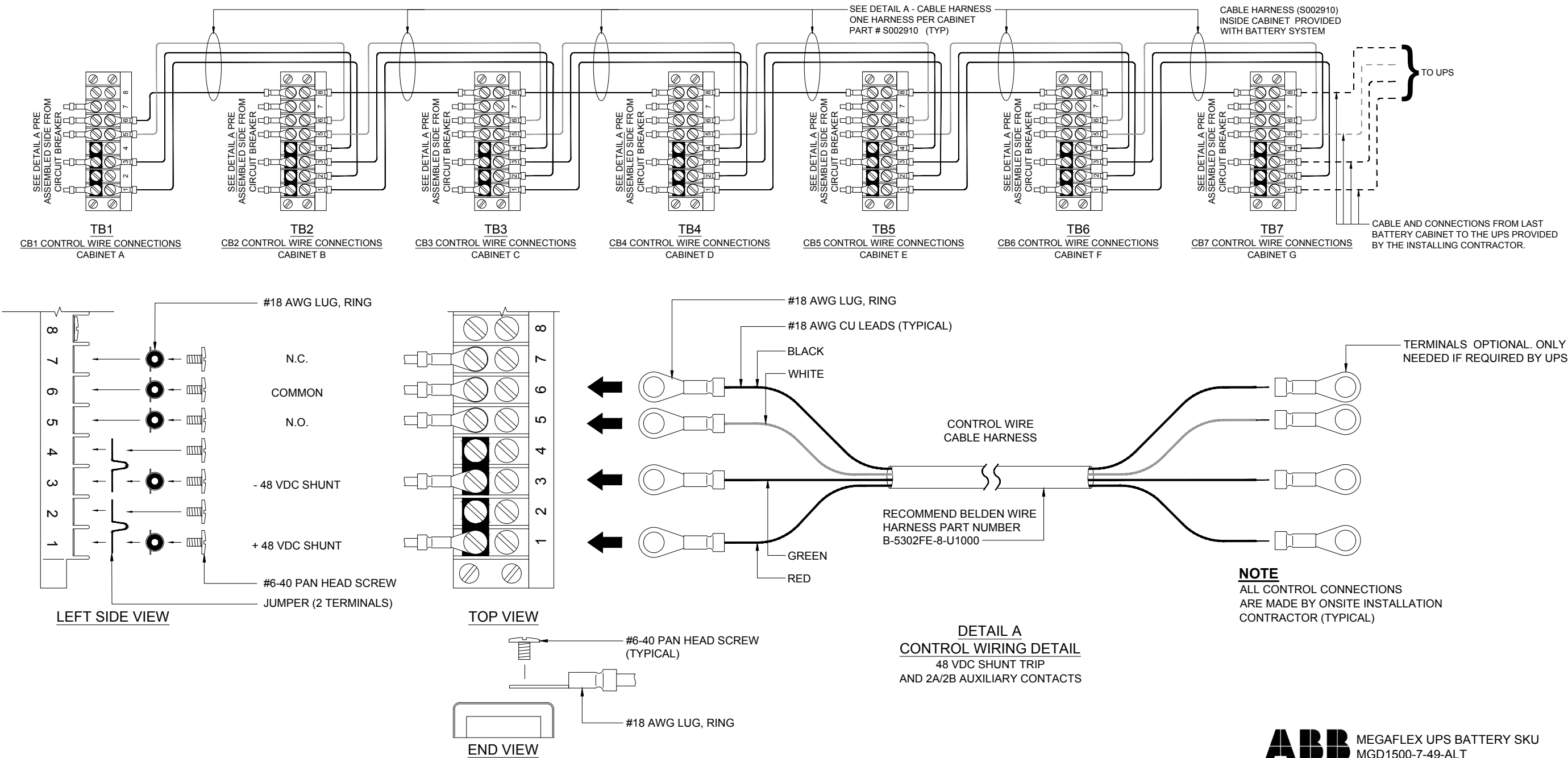


ABB MEGAFLEX UPS BATTERY SKU
MGD1500-7-49-ALT

THE INFORMATION CONTAINED IN THIS DRAWING IS THE SOLE PROPERTY OF INTRAPACK INDUSTRIES INC. ANY REPRODUCTION IN PART OR WHOLE WITHOUT THE WRITTEN PERMISSION OF INTRAPACK INDUSTRIES INC. IS PROHIBITED.						
NO.	DATE	REVISION DESCRIPTION				

IntraPack [®] WWW.INTRAPACK.COM	10650 MARKISON ROAD DALLAS, TX. 75238 PHONE: 214-348-7105 EMAIL: SALES@INTRAPACK.COM © INTRAPACK 2020			SYSTEM WEIGHT: 42,355 lbs		ADJACENT REMOTE TOP TERMINAL BATTERY CABINET SYSTEM		6 OF 6
				JOB NO.	N/A	DATE:	01/29/2021	
				QUOTE NO.	IPC20-1034	DRAWN BY:	VZ	
				SCALE:	N.T.S.	APPR. BY:		
							DRAWING NO. IP5-280P545-480-7-7D600-AR-JC	