

**CAUTION:**

HIGH CENTER OF GRAVITY - USE CAUTION WHEN MOVING CABINET

ONLY PERSONNEL TRAINED TO MOVE HEAVY EQUIPMENT SHOULD HANDLE THESE BATTERY SYSTEMS.

USE A FORKLIFT OR SIMILAR DEVICE WITH APPROPRIATE LIFTING CAPACITY TO LIFT THE CABINET.

NOTE THE CENTER OF GRAVITY MEASUREMENT

MOVE SLOWLY WHEN HANDLING. AVOID BOUNCING THE CABINET WHILE MOVING. THE CABINET COULD FALL FORWARD OR SIDEWAYS IF HANDLED ROUGHLY.

CABINET SYSTEMS ARE HEAVY AND COULD WEIGH AS MUCH AS 9,000 LBS PER CABINET OR MORE.

**STEPS FOR BATTERY CABINET INSTALLATION PROCEDURE**

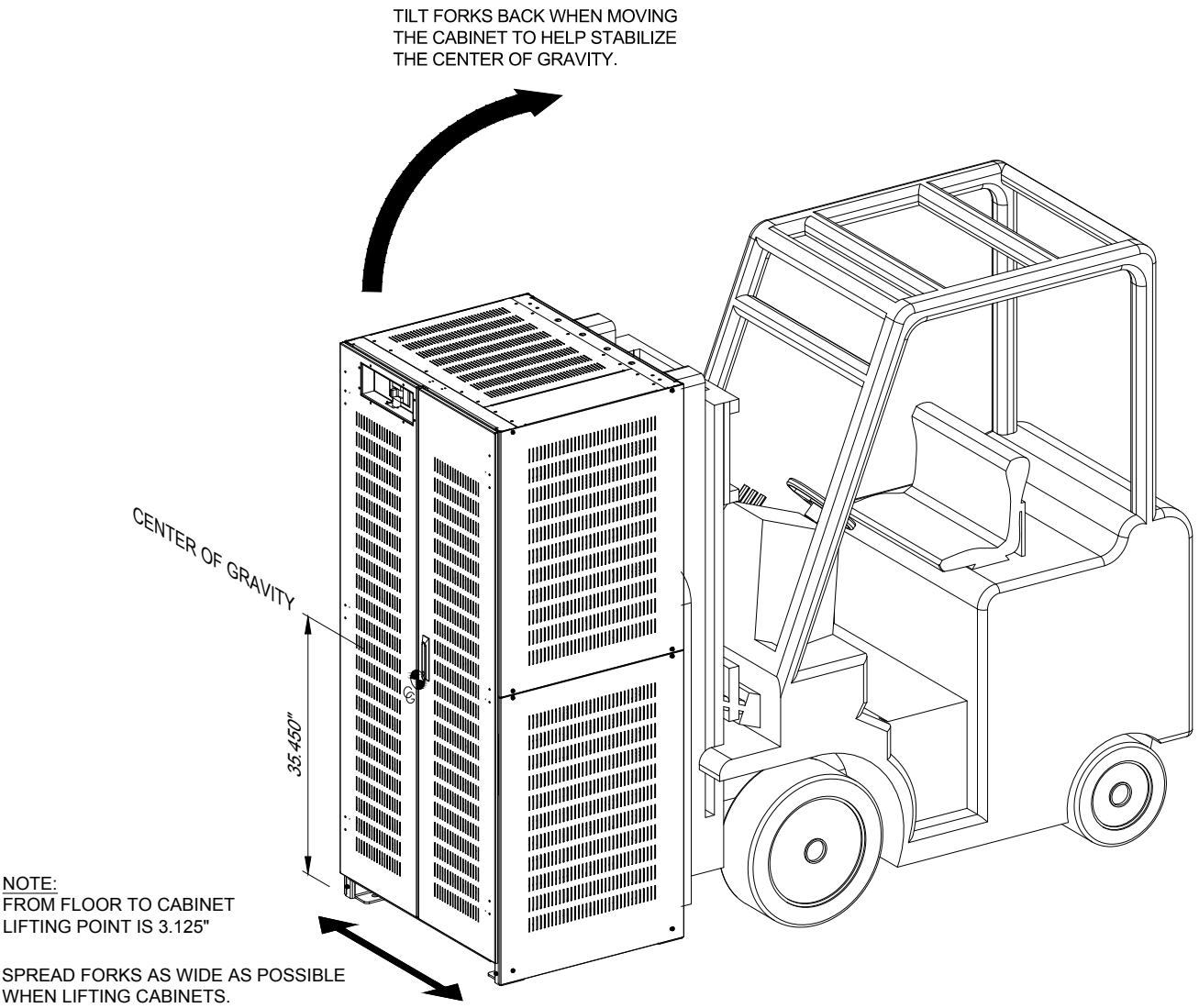
1. TO HELP PREVENT DAMAGE, ALL PANELS FROM ALL BATTERY CABINETS SHOULD BE LABELED TO THEIR PROSPECTIVE CABINET, REMOVED AND PUT ASIDE IN A SAFE LOCATION WHILE MOVING THE CABINETS TO FINAL INSTALL POSITION.
2. INSTALL AND ALIGN THE FIRST CABINET, THEN EACH CABINET ADJACENT TO EACH OTHER. REFER TO PAGE 3 FOR PROPER LINE UP.
3. ROUTE THE POWER CABLES AS SHOWN ON SHEET 4.
4. INSTALL SIDE PANEL ONTO THE OPEN SIDES OF THE BATTERY CABINET. INSTALL THE DOORS AND LOCK WHEN NOT OPEN FOR MAINTENANCE.
5. THE CABINET MUST BE ANCHORED TO THE FLOOR FOR SEISMIC SENSITIVE AREAS. AND TO MAINTAIN THE SEISMIC INTEGRITY OF THE BATTERY CABINET. ANCHORING HARDWARE IS NOT INCLUDED. CONTACT INTRAPACK TO PURCHASE ANCHORING HARDWARE

**CAUTION: HIGH VOLTAGE, RISK OF ELECTRICAL SHOCK**

- FOLLOW ALL SAFETY PRECAUTIONS WHEN WORKING ON THIS SYSTEM
- ALWAYS WEAR PROPER SAFETY EQUIPMENT INCLUDING EYE PROTECTION

**> IMPORTANT <**

\* REVIEW THE DRAWINGS AND READ ALL INFORMATION BEFORE PROCEEDING WITH MOVING AND INSTALLING THESE BATTERY CABINETS



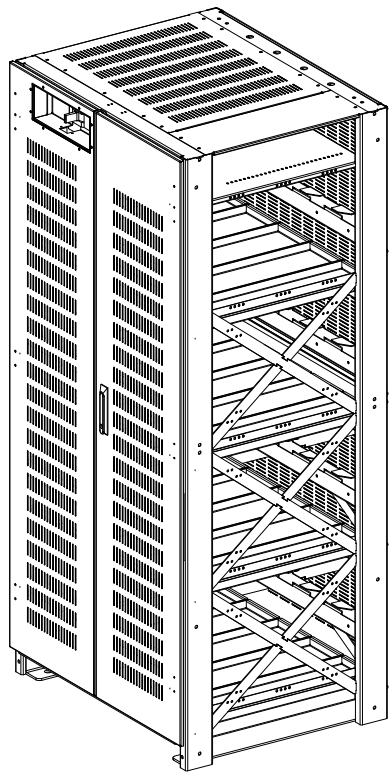
MOVING A BATTERY CABINET  
DO NOT LIFT THE CABINET HIGHER THAN NECESSARY TO CLEAR THE FLOOR WHEN MOVING

**ABB** MEGAFLEX UPS BATTERY SKU  
MGD1200-5-49-ALT

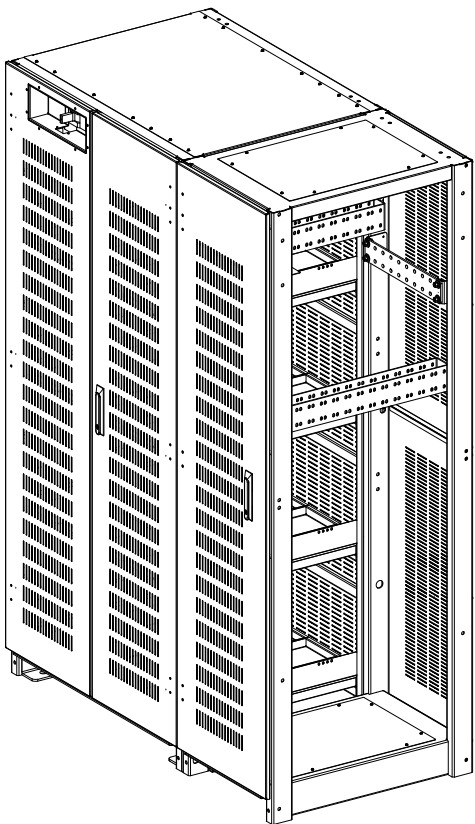
THE INFORMATION CONTAINED IN THIS DRAWING IS THE SOLE PROPERTY OF INTRAPACK INDUSTRIES INC. ANY REPRODUCTION IN PART OR WHOLE WITHOUT THE WRITTEN PERMISSION OF INTRAPACK INDUSTRIES INC. IS PROHIBITED.

NO.	DATE	REVISION DESCRIPTION	<div><div><div>IntraPack®</div><div>10650 MARKISON ROAD DALLAS, TX. 75238 PHONE: 214-348-7105 EMAIL: SALES@INTRAPACK.COM © INTRAPACK 2020</div></div><div>WWW.INTRAPACK.COM</div></div>	SYSTEM WEIGHT: 33,225 lbs				ADJACENT REMOTE TOP TERMINAL BATTERY CABINET SYSTEM		1 OF 6
				JOB NO.	N/A	DATE:	01/29/2021			
				QUOTE NO.	IPC20-1030	DRAWN BY:	VZ	DRAWING NO.		
				SCALE:	N.T.S.	APPR. BY:		IP5-200P545-480-5-5D600-AR-JC		

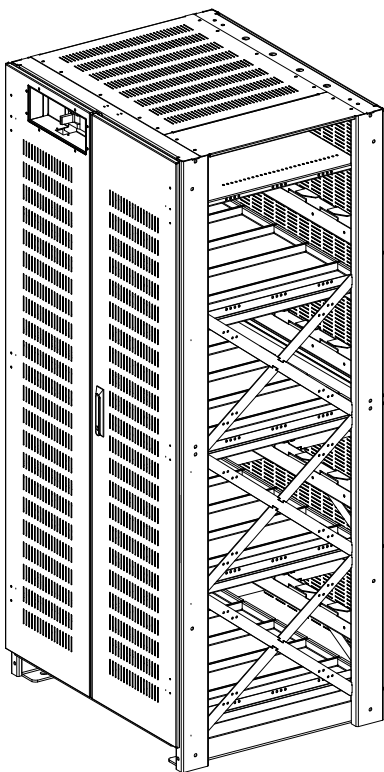
- CAUTION: HIGH VOLTAGE, RISK OF ELECTRICAL SHOCK
- FOLLOW ALL SAFETY PRECAUTIONS WHEN WORKING ON THIS SYSTEM
  - ALWAYS WEAR PROPER SAFETY EQUIPMENT INCLUDING EYE PROTECTION



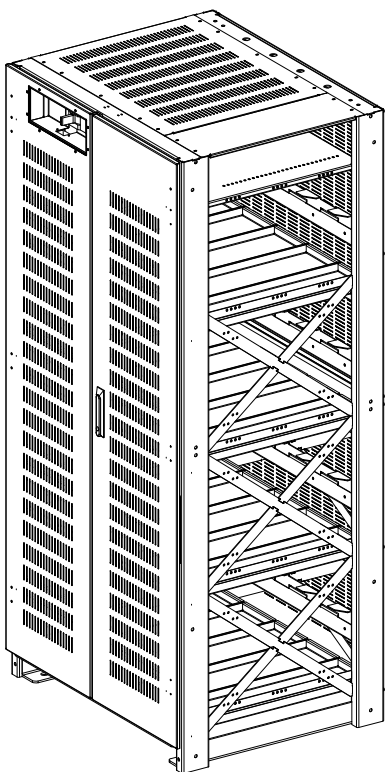
CABINET A



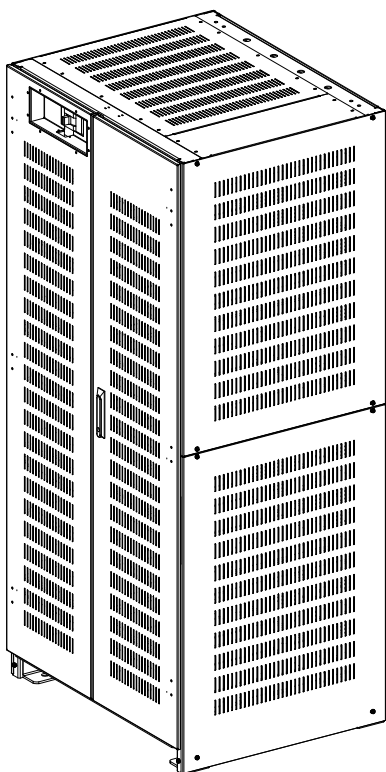
CABINET B & CJC



CABINET C



CABINET D



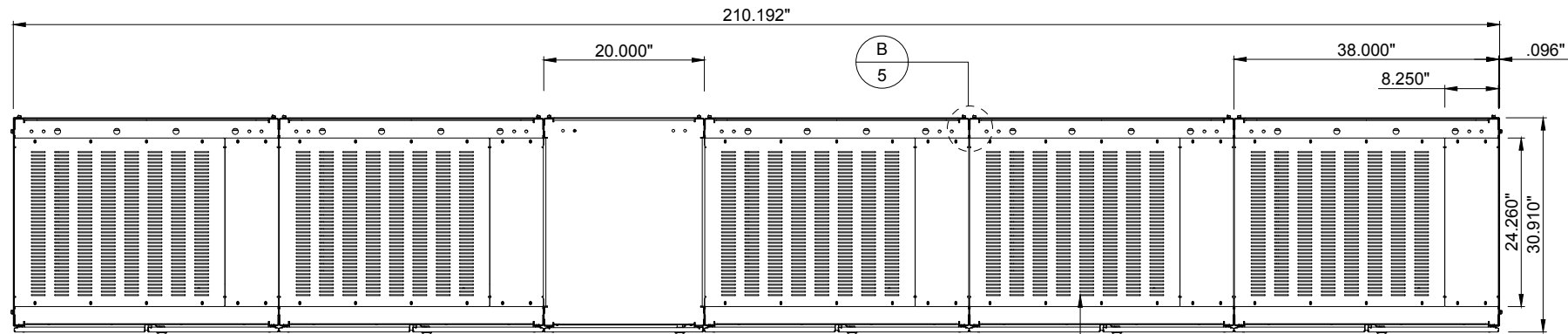
CABINET E

ISOMETRIC BATTERY CABINET VIEW

**ABB** MEGAFLEX UPS BATTERY SKU  
MGD1200-5-49-ALT

THE INFORMATION CONTAINED IN THIS DRAWING IS THE SOLE PROPERTY OF INTRAPACK INDUSTRIES INC. ANY REPRODUCTION IN PART OR WHOLE WITHOUT THE WRITTEN PERMISSION OF INTRAPACK INDUSTRIES INC. IS PROHIBITED.

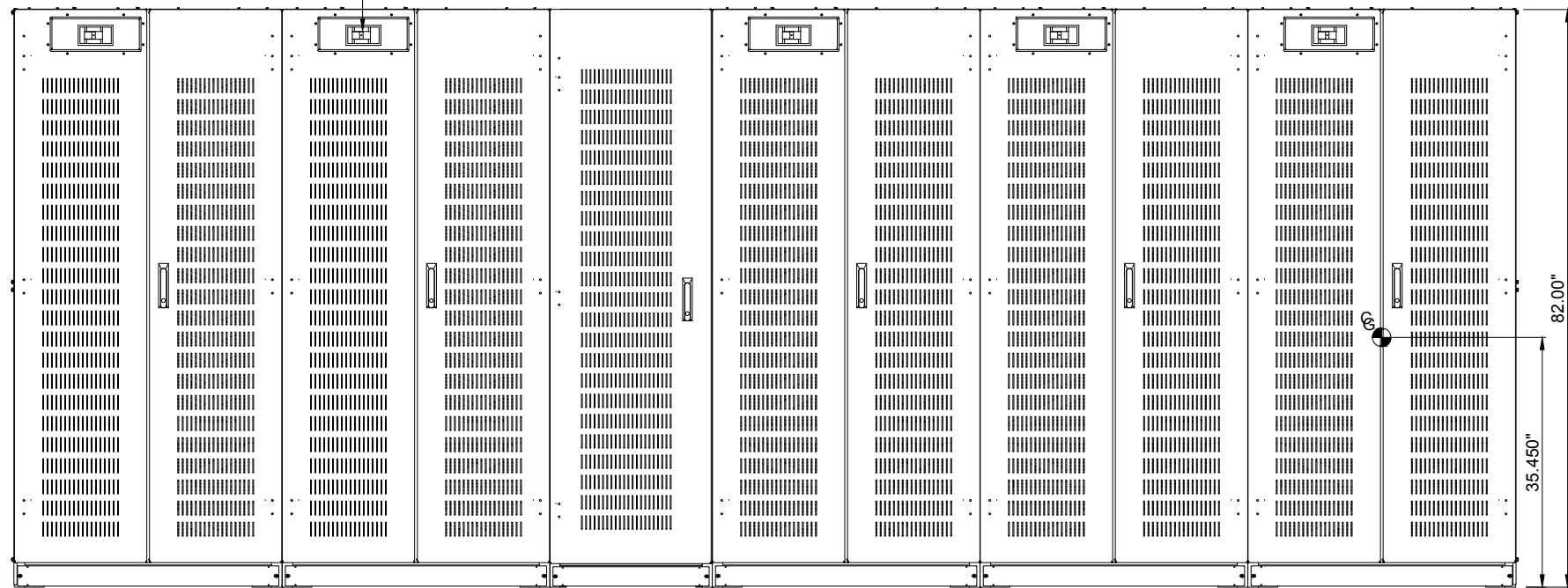
NO.	DATE	REVISION DESCRIPTION	<div><div><div>IntraPack®</div><div>10650 MARKISON ROAD DALLAS, TX. 75238 PHONE: 214-348-7105 EMAIL: SALES@INTRAPACK.COM © INTRAPACK 2020</div><div>WWW.INTRAPACK.COM</div></div></div>	SYSTEM WEIGHT: 33,225 lbs				ADJACENT REMOTE TOP TERMINAL BATTERY CABINET SYSTEM		2 OF 6
				JOB NO.	N/A	DATE:	01/29/2021			
				QUOTE NO.	IPC20-1030	DRAWN BY:	VZ	DRAWING NO.		
				SCALE:	N.T.S.	APPR. BY:		IP5-200P545-480-5-5D600-AR-JC		



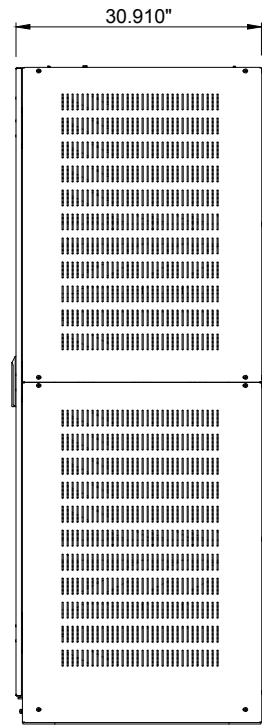
TOP VIEW

REMOVE BATTERY CABINET  
TOP TO ACCESS CABLE TRAY

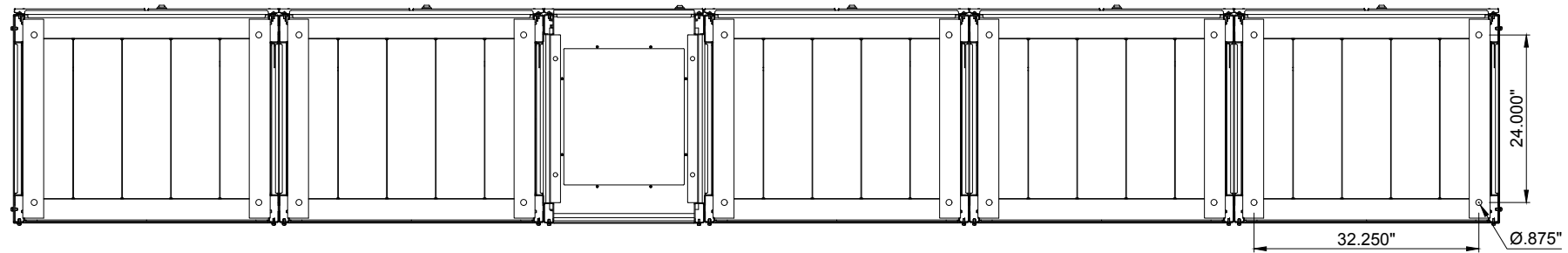
BREAKER ACCESSIBLE  
THROUGH DOOR (TYP)



FRONT VIEW



SIDE VIEW



BOTTOM VIEW

**CAUTION: HIGH VOLTAGE, RISK OF ELECTRICAL SHOCK**

- FOLLOW ALL SAFETY PRECAUTIONS WHEN WORKING ON THIS SYSTEM
- ALWAYS WEAR PROPER SAFETY EQUIPMENT INCLUDING EYE PROTECTION

**ABB** MEGAFLEX UPS BATTERY SKU  
MGD1200-5-49-ALT

THE INFORMATION CONTAINED IN THIS DRAWING IS THE SOLE PROPERTY OF INTRAPACK INDUSTRIES INC. ANY REPRODUCTION IN PART OR WHOLE WITHOUT THE WRITTEN PERMISSION OF INTRAPACK INDUSTRIES INC. IS PROHIBITED.

NO.	DATE	REVISION DESCRIPTION	<div><div><div><b>IntraPack</b><sup>®</sup></div><div>10650 MARKISON ROAD DALLAS, TX. 75238 PHONE: 214-348-7105 EMAIL: SALES@INTRAPACK.COM © INTRAPACK 2020</div></div><div>WWW.INTRAPACK.COM</div></div>	SYSTEM WEIGHT: 33,225 lbs				ADJACENT REMOTE TOP TERMINAL BATTERY CABINET SYSTEM	3 OF 6
				JOB NO.	N/A	DATE:	01/29/2021		
				QUOTE NO.	IPC20-1030	DRAWN BY:	VZ	DRAWING NO.	
				SCALE:	N.T.S.	APPR. BY:		IP5-200P545-480-5-5D600-AR-JC	

1

DC POWER CABLES FROM CJC TO THE UPS PROVIDED BY OTHERS. REFER TO NEC FOR PROPER AWG SIZE

2

TERMINAL BLOCK TO TERMINAL BLOCK AND TERMINAL BLOCK TO UPS CONTROL WIRING WILL BE 16-20 GA STRANDED, PROVIDED BY OTHERS

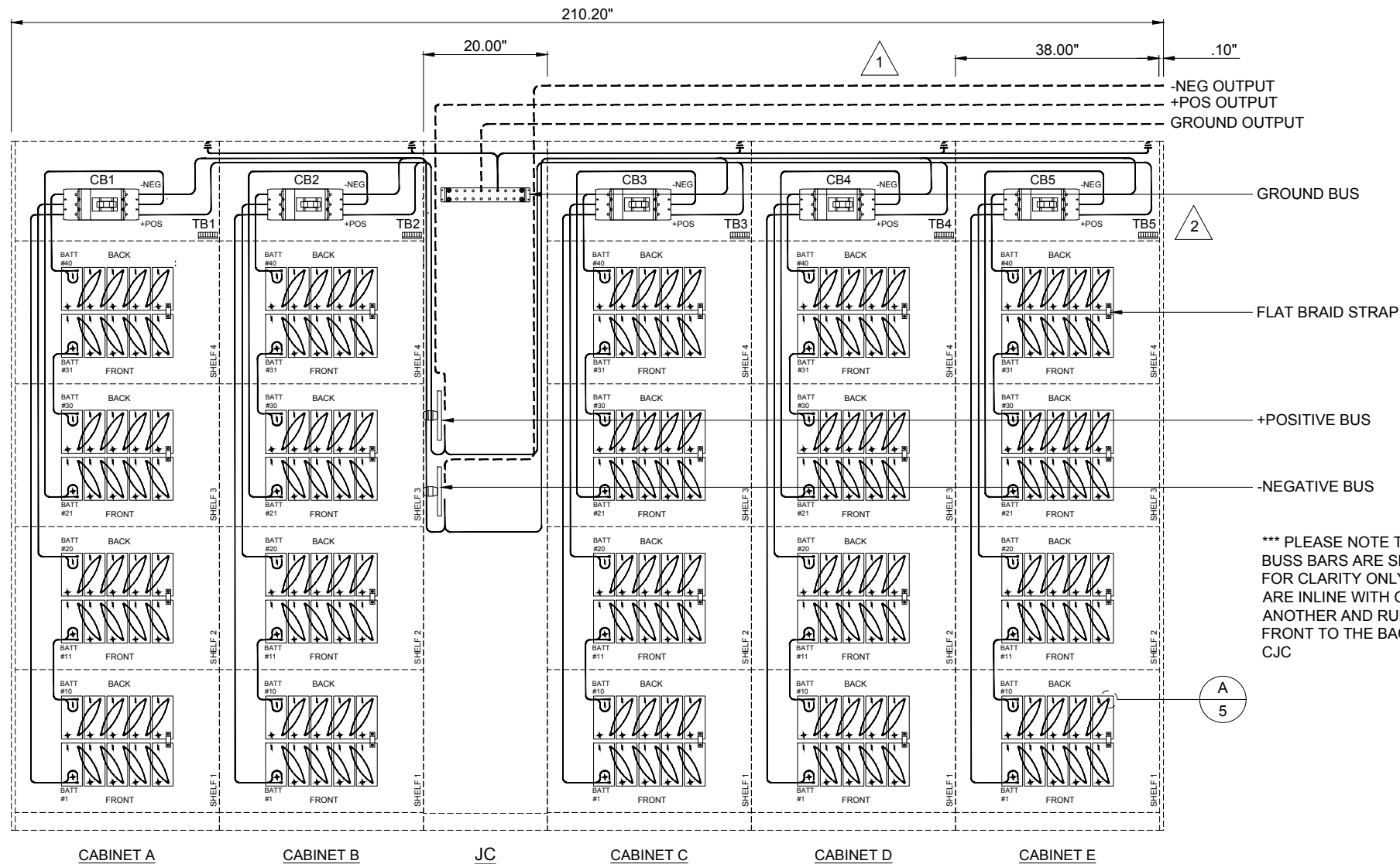
POSITIONING OF COMPONENTS ARE FOR ILLUSTRATION PURPOSES AND MAY NOT BE REPRESENTED IN THE EXACT LOCATION INDICATED.

**CAUTION: HIGH VOLTAGE, RISK OF ELECTRICAL SHOCK**

- FOLLOW ALL SAFETY PRECAUTIONS WHEN WORKING ON THIS SYSTEM
- ALWAYS WEAR PROPER SAFETY EQUIPMENT INCLUDING EYE PROTECTION

**GENERAL NOTES:**

- ONLY QUALIFIED TECHNICIANS SHOULD PERFORM INSTALLATION OR MAINTENANCE OF THIS BATTERY SYSTEM.
- ALL TOOLS SHOULD BE INSULATED TO PREVENT ELECTRICAL SHOCK.
- OPEN DISCONNECTS BEFORE INSTALLATION OR MAINTENANCE.
- CHECK DC VOLTAGE AT BATTERY OUTPUT AND UPS OUTPUT TO ENSURE PROPER POLARITY BEFORE MAKING FINAL CONNECTIONS.



**ELECTRICAL ILLUSTRATION**

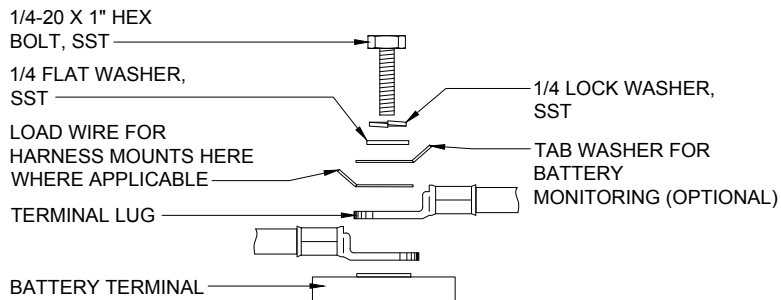
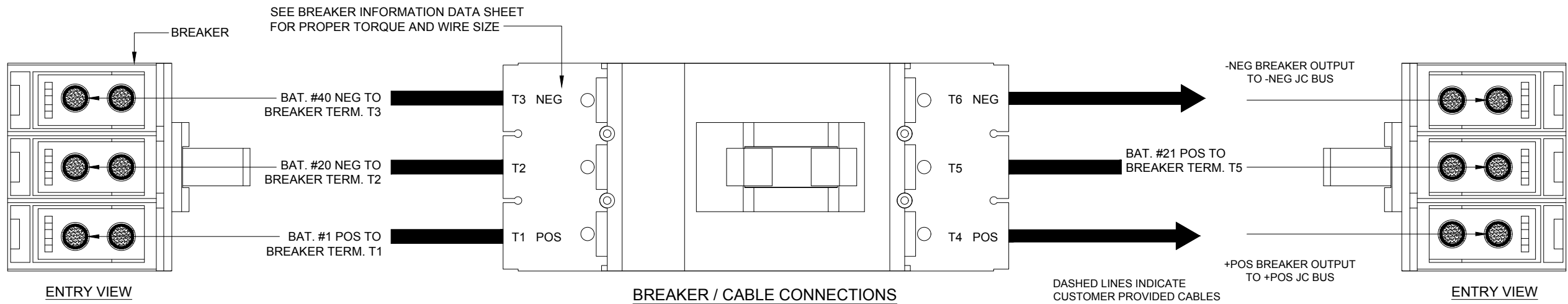
**ABB** MEGAFLEX UPS BATTERY SKU  
MGD1200-5-49-ALT

THE INFORMATION CONTAINED IN THIS DRAWING IS THE SOLE PROPERTY OF INTRAPACK INDUSTRIES INC. ANY REPRODUCTION IN PART OR WHOLE WITHOUT THE WRITTEN PERMISSION OF INTRAPACK INDUSTRIES INC. IS PROHIBITED.

NO.	DATE	REVISION DESCRIPTION	<div><div><div>IntraPack®</div><div>10650 MARKISON ROAD DALLAS, TX. 75238 PHONE: 214-348-7105 EMAIL: SALES@INTRAPACK.COM © INTRAPACK 2020</div></div><div>WWW.INTRAPACK.COM</div></div>	SYSTEM WEIGHT: 33,225 lbs				ADJACENT REMOTE TOP TERMINAL BATTERY CABINET SYSTEM		4 OF 6
				JOB NO.	N/A	DATE:	01/29/2021			
				QUOTE NO.	IPC20-1030	DRAWN BY:	VZ	DRAWING NO.		
				SCALE:	N.T.S.	APPR. BY:		IP5-200P545-480-5-5D600-AR-JC		

CAUTION: HIGH VOLTAGE, RISK OF ELECTRICAL SHOCK

- FOLLOW ALL SAFETY PRECAUTIONS WHEN WORKING ON THIS SYSTEM
- ALWAYS WEAR PROPER SAFETY EQUIPMENT INCLUDING EYE PROTECTION

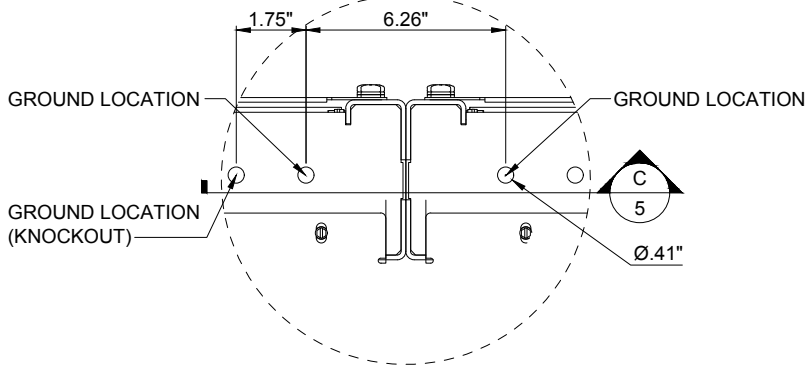


INSERT-TYPE POST (DYNASTY)

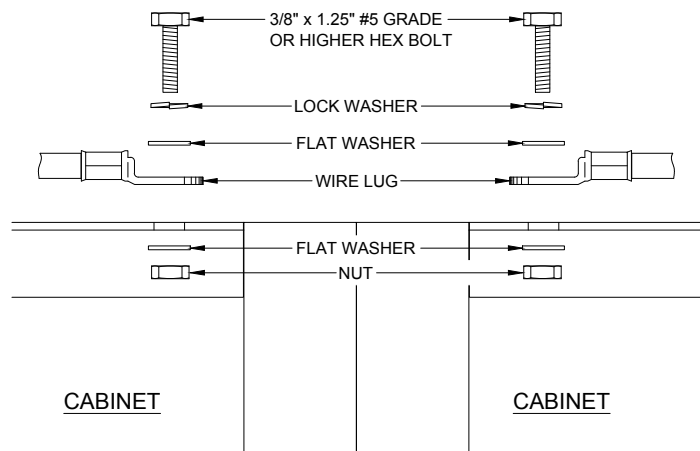
UPS12-305PLP, UPS12-355PLP, UPS12-405PLP, UPS12-495PLP, UPS12-545PLP, UPS6-605PLP  
TORQUE TO 110 IN-LBS.

MANUFACTURERS WEB SITE- <https://alpinepowersystems.com/backup-power-products/backup-batteries/ups-batteries/c-d-pure-lead-plus/>

DETAIL 'A'  
REF: SHEET 4



DETAIL 'B'  
REF: SHEET 3



\*\*\* GROUND WIRE AND CONNECTIONS TO BE SUPPLIED BY CUSTOMER. WIRE LENGTH AND SIZE DETERMINED BY CUSTOMER

DETAIL 'C'

**ABB** MEGAFLEX UPS BATTERY SKU  
MGD1200-5-49-ALT

THE INFORMATION CONTAINED IN THIS DRAWING IS THE SOLE PROPERTY OF INTRAPACK INDUSTRIES INC. ANY REPRODUCTION IN PART OR WHOLE WITHOUT THE WRITTEN PERMISSION OF INTRAPACK INDUSTRIES INC. IS PROHIBITED.

NO.	DATE	REVISION DESCRIPTION	<div><div><div>IntraPack®</div><div>10650 MARKISON ROAD DALLAS, TX. 75238 PHONE: 214-348-7105 EMAIL: SALES@INTRAPACK.COM © INTRAPACK 2020</div></div><div>WWW.INTRAPACK.COM</div></div>	SYSTEM WEIGHT: 33,225 lbs				ADJACENT REMOTE TOP TERMINAL BATTERY CABINET SYSTEM		5 OF 6
					JOB NO.	N/A	DATE:	01/29/2021		
					QUOTE NO.	IPC20-1030	DRAWN BY:	VZ	DRAWING NO.	
					SCALE:	N.T.S.	APPR. BY:		IP5-200P545-480-5-5D600-AR-JC	

**REMOTE BATTERY CABINET SYSTEM:**  
ALL CABLE HARNESSSES FROM BATTERY CABINET TO BATTERY CABINET AND BATTERY CABINET TO UPS WILL BE PROVIDED BY THE INSTALLING CONTRACTOR.