

CAUTION:

HIGH CENTER OF GRAVITY - USE CAUTION WHEN MOVING CABINET

ONLY PERSONNEL TRAINED TO MOVE HEAVY EQUIPMENT SHOULD HANDLE THESE BATTERY SYSTEMS.

USE A FORKLIFT OR SIMILAR DEVICE WITH APPROPRIATE LIFTING CAPACITY TO LIFT THE CABINET.

NOTE THE CENTER OF GRAVITY MEASUREMENT

MOVE SLOWLY WHEN HANDLING. AVOID BOUNCING THE CABINET WHILE MOVING. THE CABINET COULD FALL FORWARD OR SIDEWAYS IF HANDLED ROUGHLY.

CABINET SYSTEMS ARE HEAVY AND COULD WEIGH AS MUCH AS 9,000 LBS PER CABINET OR MORE.

STEPS FOR BATTERY CABINET INSTALLATION PROCEDURE

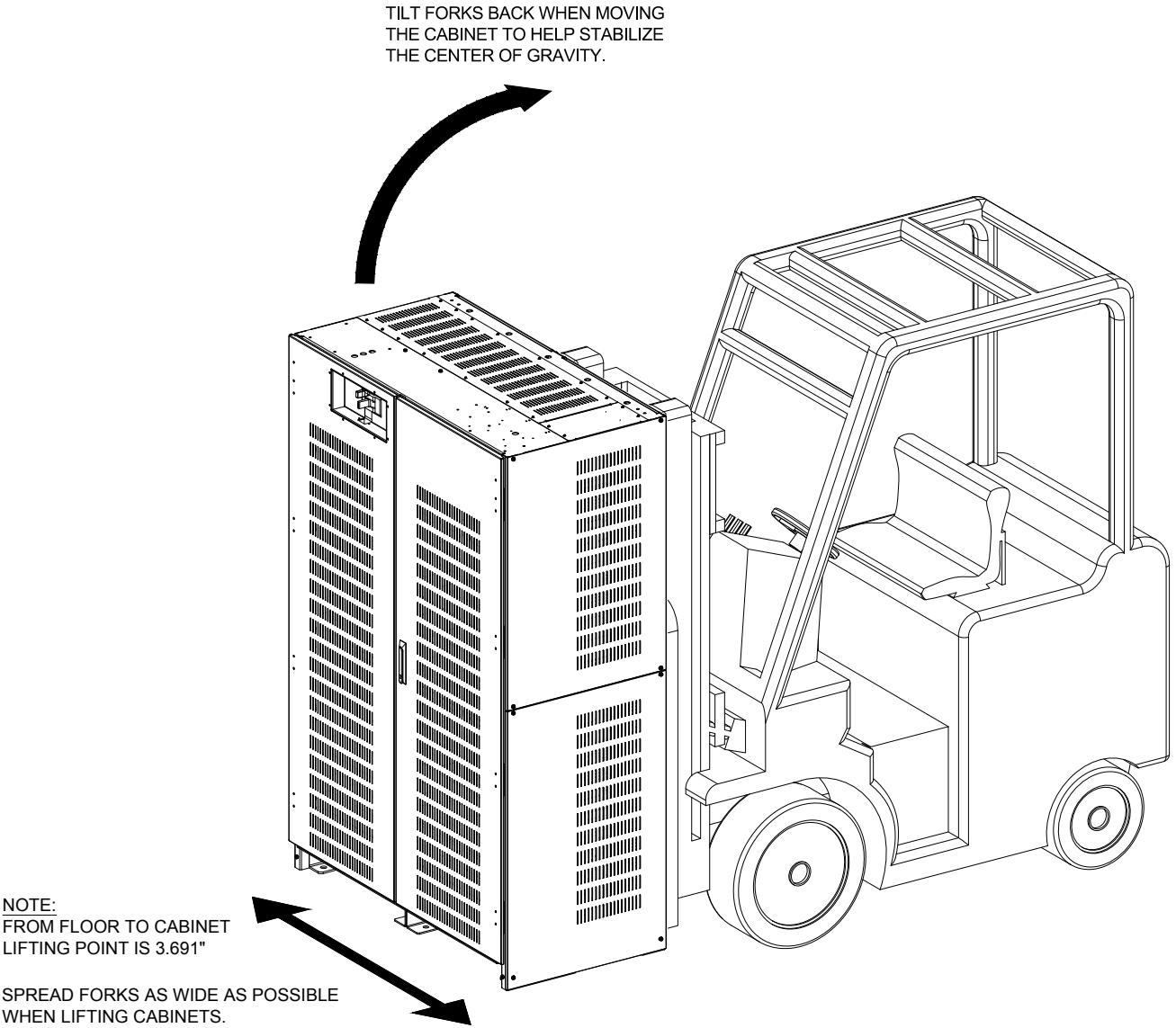
- TO HELP PREVENT DAMAGE, ALL PANELS FROM ALL BATTERY CABINETS SHOULD BE LABELED TO THEIR PROSPECTIVE CABINET, REMOVED AND PUT ASIDE IN A SAFE LOCATION WHILE MOVING THE CABINETS TO FINAL INSTALL POSITION.
- INSTALL AND ALIGN THE FIRST CABINET, THEN EACH CABINET ADJACENT TO EACH OTHER. THE BATTERY CABINETS SHOULD BE BOLTED TOGETHER. REFER TO PAGE 3 FOR PROPER LINE UP.
- ROUTE THE POWER CABLES AS SHOWN ON SHEET 4.
- INSTALL SIDE PANEL ONTO THE OPEN SIDES OF THE BATTERY CABINET. INSTALL THE DOORS AND LOCK WHEN NOT OPEN FOR MAINTENANCE.
- THE CABINET MUST BE ANCHORED TO THE FLOOR FOR SEISMIC SENSITIVE AREAS. AND TO MAINTAIN THE SEISMIC INTEGRITY OF THE BATTERY CABINET. ANCHORING HARDWARE IS NOT INCLUDED. CONTACT INTRAPACK TO PURCHASE ANCHORING HARDWARE

CAUTION: HIGH VOLTAGE, RISK OF ELECTRICAL SHOCK

- FOLLOW ALL SAFETY PRECAUTIONS WHEN WORKING ON THIS SYSTEM
- ALWAYS WEAR PROPER SAFETY EQUIPMENT INCLUDING EYE PROTECTION

> IMPORTANT <

* REVIEW THE DRAWINGS AND READ ALL INFORMATION BEFORE PROCEEDING WITH MOVING AND INSTALLING THESE BATTERY CABINETS



MOVING A BATTERY CABINET

DO NOT LIFT THE CABINET HIGHER THAN NECESSARY TO CLEAR THE FLOOR WHEN MOVING

ABB MEGAFLEX UPS BATTERY SKU
MGH1600-7-4B-ALT

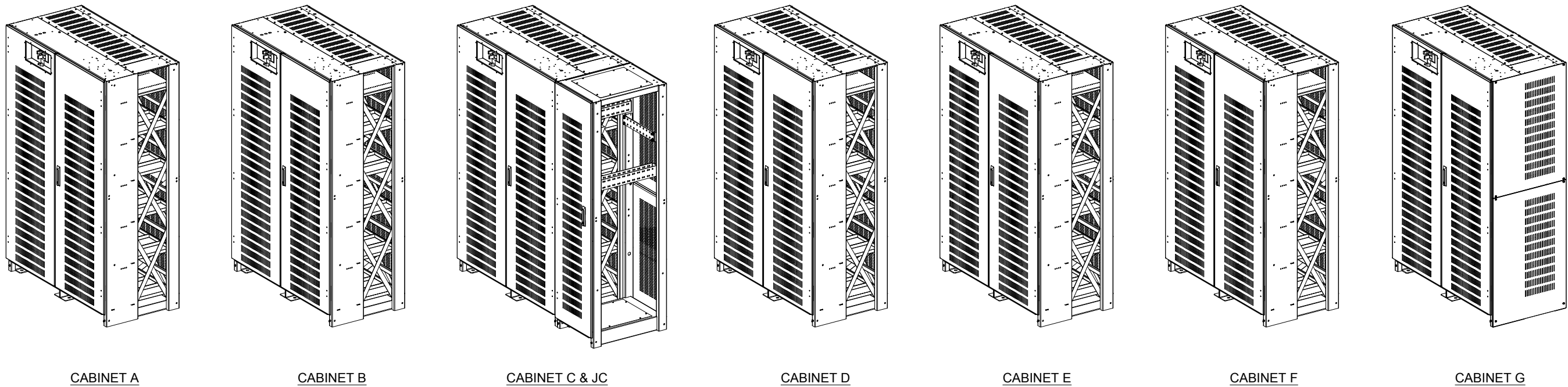
THE INFORMATION CONTAINED IN THIS DRAWING IS THE SOLE PROPERTY OF INTRAPACK INDUSTRIES INC. ANY REPRODUCTION IN PART OR WHOLE WITHOUT THE WRITTEN PERMISSION OF INTRAPACK INDUSTRIES INC. IS PROHIBITED.

NO.	DATE	REVISION DESCRIPTION	<div><div><div><div>IntraPack</div><div>®</div></div><div>10650 MARKISON ROAD DALLAS, TX. 75238 PHONE: 214-348-7105 EMAIL: SALES@INTRAPACK.COM © INTRAPACK 2020</div></div><div>WWW.INTRAPACK.COM</div></div>	SYSTEM WEIGHT: 58,380 lbs				ADJACENT REMOTE FRONT TERMINAL BATTERY CABINET SYSTEM NEXSTAR MEDIA - INDIANAPOLIS, IN		1 OF 6
01	06/23/2020	THERMOSTAT WIRING UPDATE SEE SHEET 6		JOB NO.	N/A	DATE:	01/29/2021			
				QUOTE NO.	IPC20-1025	DRAWN BY:	SM	DRAWING NO.		
				SCALE:	N.T.S.	APPR. BY:		IP8F1K-280D10F-480-7-7D600-AR-JC		

CAUTION: HIGH VOLTAGE, RISK OF ELECTRICAL SHOCK

FOLLOW ALL SAFETY PRECAUTIONS WHEN WORKING ON THIS SYSTEM

ALWAYS WEAR PROPER SAFETY EQUIPMENT INCLUDING EYE PROTECTION



ISOMETRIC BATTERY CABINET VIEW

ABB

MEGAFLEX UPS BATTERY SKU
MGH1600-7-4B-ALT

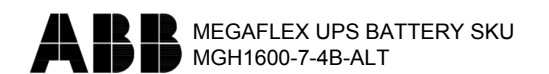
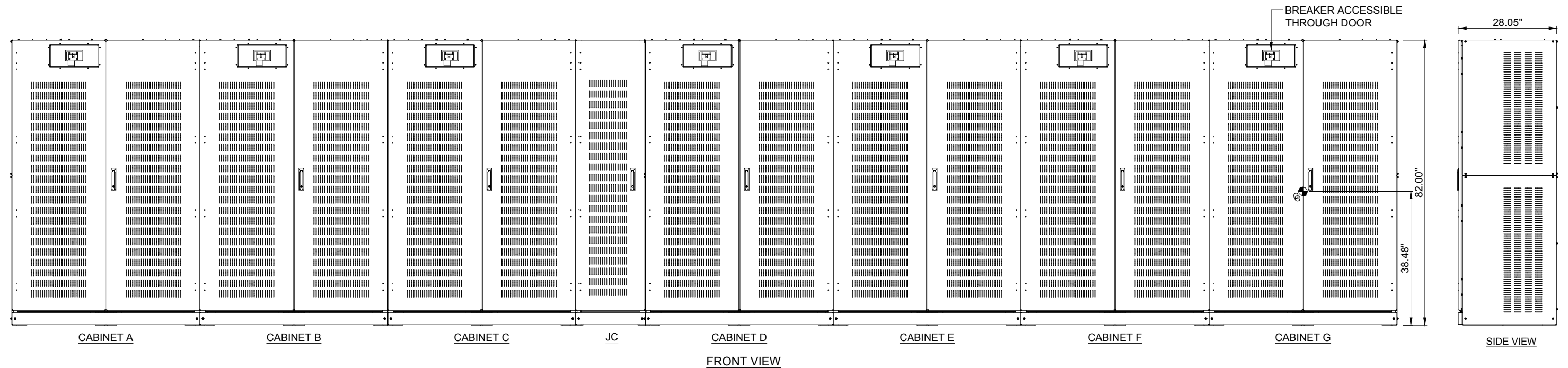
THE INFORMATION CONTAINED IN THIS DRAWING IS THE SOLE PROPERTY OF INTRAPACK INDUSTRIES INC. ANY REPRODUCTION IN PART OR WHOLE WITHOUT THE WRITTEN PERMISSION OF INTRAPACK INDUSTRIES INC. IS PROHIBITED.												
NO.	DATE	REVISION DESCRIPTION			<div><div><div>IntraPack®</div><div>10650 MARKISON ROAD DALLAS, TX. 75238 PHONE: 214-348-7105 EMAIL: SALES@INTRAPACK.COM © INTRAPACK 2020</div></div><div>WWW.INTRAPACK.COM</div></div>	SYSTEM WEIGHT: 58,380 lbs				ADJACENT REMOTE FRONT TERMINAL BATTERY CABINET SYSTEM NEXSTAR MEDIA - INDIANAPOLIS, IN		2 OF 6
01	06/23/2020	THERMOSTAT WIRING UPDATE SEE SHEET 6				JOB NO.	N/A	DATE:	01/29/2021			
						QUOTE NO.	IPC20-1025	DRAWN BY:	SM	DRAWING NO. IP8F1K-280D10F-480-7-7D600-AR-JC		
						SCALE:	N.T.S.	APPR. BY:				

IntraPack®

10650 MARKISON ROAD
DALLAS, TX. 75238
PHONE: 214-348-7105
EMAIL: SALES@INTRAPACK.COM
© INTRAPACK 2020

WWW.INTRAPACK.COM

- FOLLOW ALL SAFETY PRECAUTIONS WHEN WORKING ON THIS SYSTEM
- ALWAYS WEAR PROPER SAFETY EQUIPMENT INCLUDING EYE PROTECTION



NO.	DATE	REVISION DESCRIPTION
01	06/23/2020	THERMOSTAT WIRING UPDATE SEE SHEET 6

SYSTEM WEIGHT: 58,380 lbs			
JOB NO.	N/A	DATE:	01/29/2021
QUOTE NO.	IPC20-1025	DRAWN BY:	SM
SCALE:	N.T.S.	APPR. BY:	

ADJACENT REMOTE FRONT
TERMINAL BATTERY CABINET SYSTEM
NEXSTAR MEDIA - INDIANAPOLIS, IN
DRAWING NO.
IP8F1K-280D10F-480-7-7D600-AR-JC

3
OF
6

1

DC POWER CABLES FROM BATTERY CABINET
BREAKER TO THE UPS PROVIDED BY OTHERS.
REFER TO NEC FOR PROPER AWG SIZE

2

TERMINAL BLOCK TO TERMINAL BLOCK AND
TERMINAL BLOCK TO UPS CONTROL WIRING WILL
BE 16-20 GA STRANDED, PROVIDED BY OTHERS

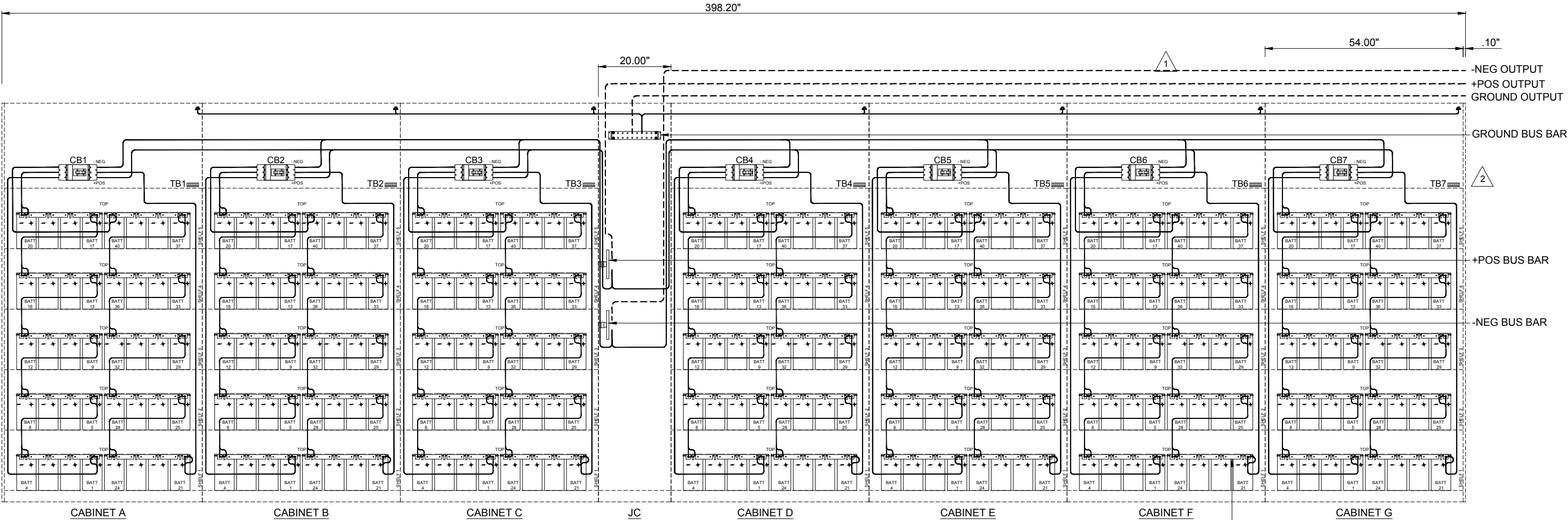
POSITIONING OF COMPONENTS
ARE FOR ILLUSTRATION PURPOSES
AND MAY NOT BE REPRESENTED IN
THE EXACT LOCATION INDICATED.

CAUTION: HIGH VOLTAGE, RISK OF ELECTRICAL SHOCK

- FOLLOW ALL SAFETY PRECAUTIONS WHEN WORKING ON THIS SYSTEM
- ALWAYS WEAR PROPER SAFETY EQUIPMENT INCLUDING EYE PROTECTION

GENERAL NOTES:

- ONLY QUALIFIED TECHNICIANS SHOULD PERFORM
INSTALLATION OR MAINTENANCE OF THIS BATTERY SYSTEM.
- ALL TOOLS SHOULD BE INSULATED TO PREVENT ELECTRICAL
SHOCK.
- OPEN DISCONNECTS BEFORE INSTALLATION OR MAINTENANCE.
- CHECK DC VOLTAGE AT BATTERY OUTPUT AND UPS OUTPUT TO
ENSURE PROPER POLARITY BEFORE MAKING FINAL
CONNECTIONS.



ELECTRICAL ILLUSTRATION

- BRAIDED STRAP BUSS BARS
CAN BE SHIPPED CONNECTED
OR DISCONNECTED
- SOLID COPPER BUSS BARS
ARE SHIPPED DISCONNECTED
ONLY

ABB MEGAFLEX UPS BATTERY SKU
MGH1600-7-4B-ALT

THE INFORMATION CONTAINED IN THIS DRAWING IS THE SOLE PROPERTY OF INTRAPACK INDUSTRIES INC. ANY REPRODUCTION IN PART OR WHOLE WITHOUT THE WRITTEN PERMISSION OF INTRAPACK INDUSTRIES INC. IS PROHIBITED.

NO.	DATE	REVISION DESCRIPTION
01	06/23/2020	THERMOSTAT WIRING UPDATE SEE SHEET 6

IntraPack

WWW.INTRAPACK.COM

10650 MARKISON ROAD
DALLAS, TX. 75238
PHONE: 214-348-7105
EMAIL: SALES@INTRAPACK.COM
© INTRAPACK 2020

SYSTEM WEIGHT: 58,380 lbs			
JOB NO.	N/A	DATE:	01/29/2021
QUOTE NO.	IPC20-1025	DRAWN BY:	SM
SCALE:	N.T.S.	APPR. BY:	

ADJACENT REMOTE FRONT TERMINAL BATTERY CABINET SYSTEM NEXSTAR MEDIA - INDIANAPOLIS, IN
DRAWING NO. IP8F1K-280D10F-480-7-7D600-AR-JC

CAUTION: HIGH VOLTAGE, RISK OF ELECTRICAL SHOCK

- FOLLOW ALL SAFETY PRECAUTIONS WHEN WORKING ON THIS SYSTEM
- ALWAYS WEAR PROPER SAFETY EQUIPMENT INCLUDING EYE PROTECTION

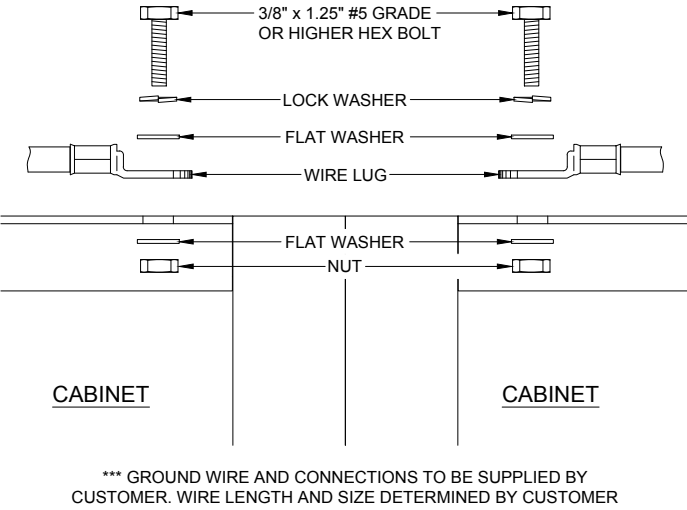
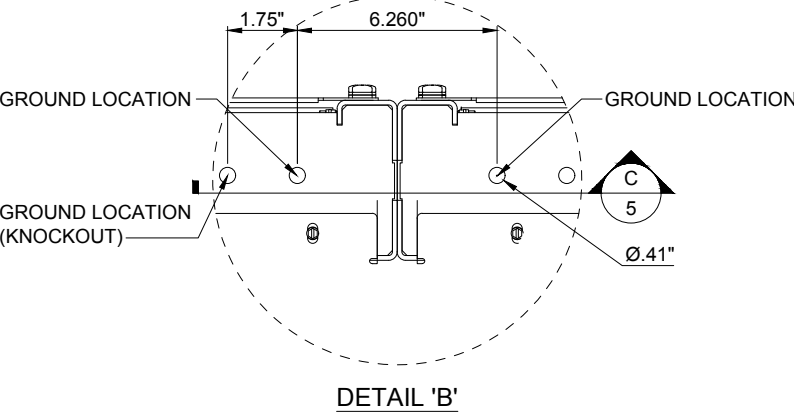
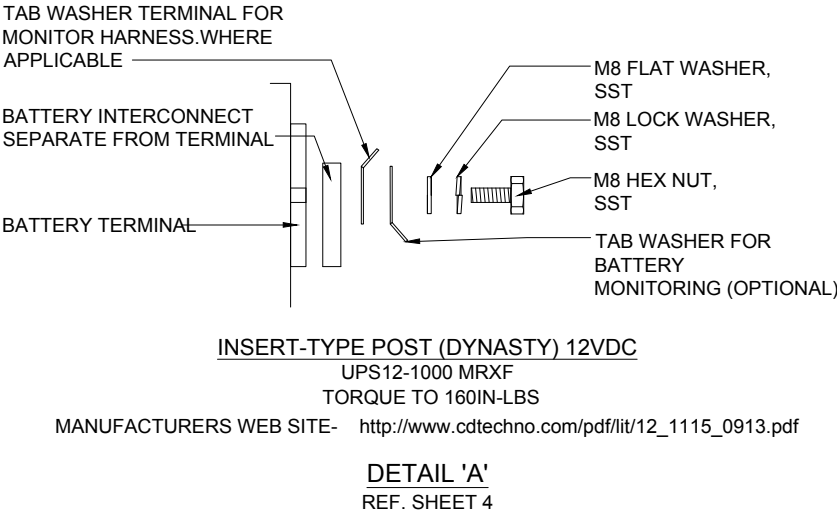
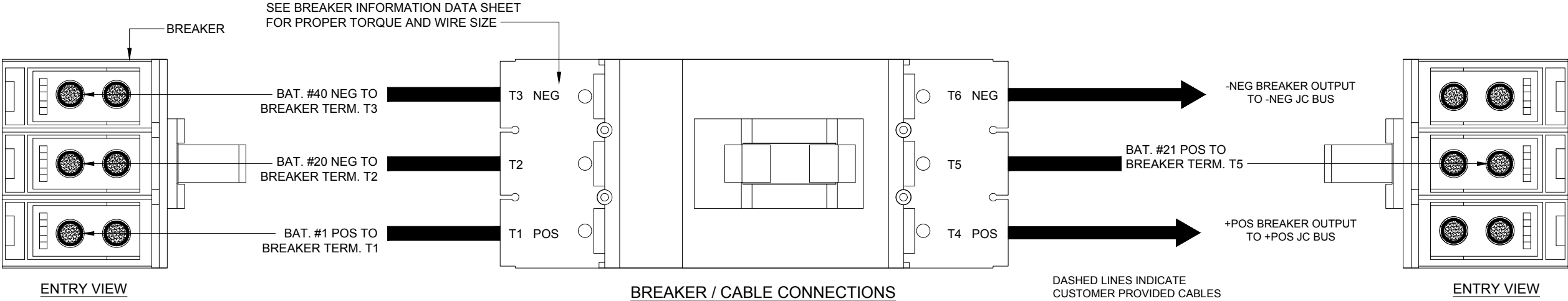


ABB MEGAFLEX UPS BATTERY SKU
MGH1600-7-4B-ALT

THE INFORMATION CONTAINED IN THIS DRAWING IS THE SOLE PROPERTY OF INTRAPACK INDUSTRIES INC. ANY REPRODUCTION IN PART OR WHOLE WITHOUT THE WRITTEN PERMISSION OF INTRAPACK INDUSTRIES INC. IS PROHIBITED.													
NO.	DATE	REVISION DESCRIPTION				<div><div><div>IntraPack®</div><div>10650 MARKISON ROAD DALLAS, TX. 75238 PHONE: 214-348-7105 EMAIL: SALES@INTRAPACK.COM © INTRAPACK 2020</div></div><div>WWW.INTRAPACK.COM</div></div>	SYSTEM WEIGHT: 58,380 lbs				ADJACENT REMOTE FRONT TERMINAL BATTERY CABINET SYSTEM NEXSTAR MEDIA - INDIANAPOLIS, IN		5 OF 6
01	06/23/2020	THERMOSTAT WIRING UPDATE SEE SHEET 6					JOB NO.	N/A	DATE:	01/29/2021			
							QUOTE NO.	IPC20-1025	DRAWN BY:	SM			
							SCALE:	N.T.S.	APPR. BY:				
							DRAWING NO. IP8F1K-280D10F-480-7-7D600-AR-JC						

ADJACENT BATTERY CABINET SYSTEM:
ALL CABLE HARNESSSES ARE PROVIDED IN BOTH THE BATTERY CABINET TO BATTERY CABINET CONNECTION INCLUDING THE BATTERY CABINET CABLE HARNESS TO THE UPS.

ADJACENT REMOTE BATTERY CABINET SYSTEM:
ALL CABLE HARNESSSES FROM BATTERY CABINET TO BATTERY CABINET WILL BE PROVIDED. THE BATTERY CABINET TO UPS CABLE HARNESS WILL BE PROVIDED BY THE INSTALLING CONTRACTOR.

REMOTE BATTERY CABINET SYSTEM:
ALL CABLE HARNESSSES FROM BATTERY CABINET TO BATTERY CABINET AND BATTERY CABINET TO UPS WILL BE PROVIDED BY THE INSTALLING CONTRACTOR.

CONTROL WIRING ROUTING

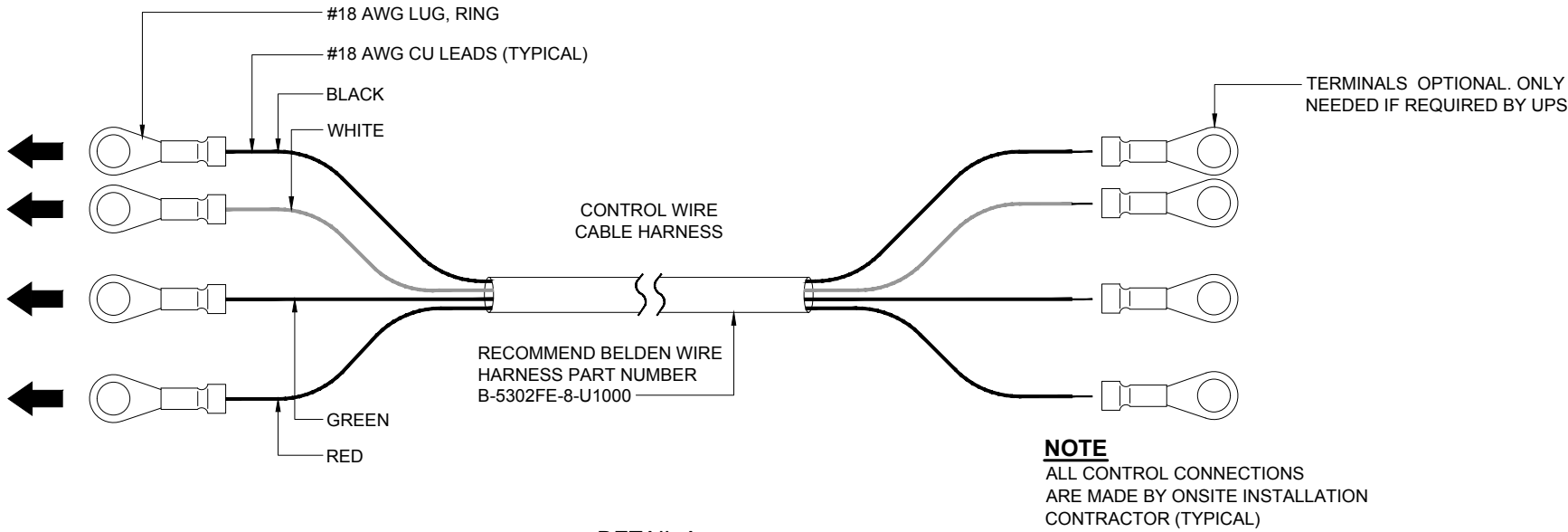
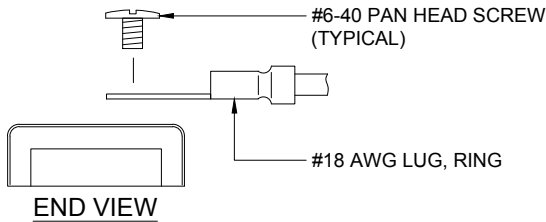
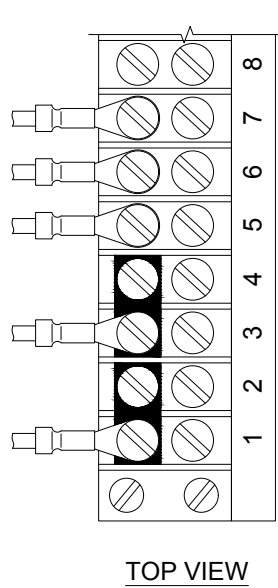
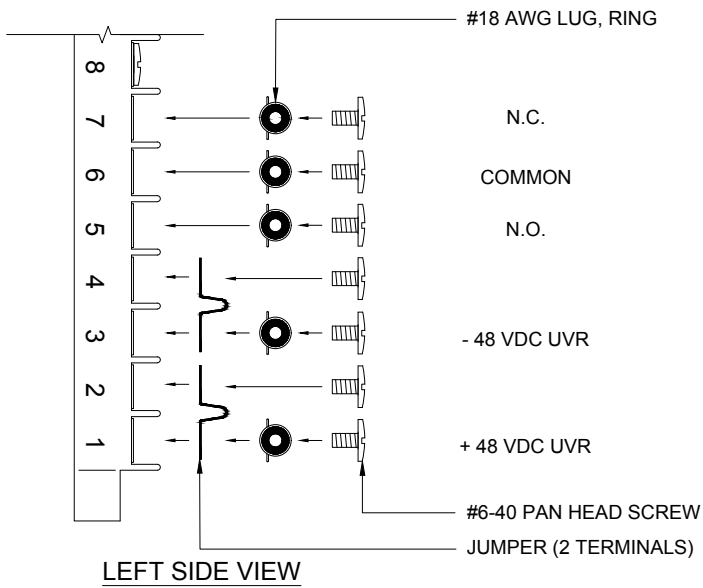
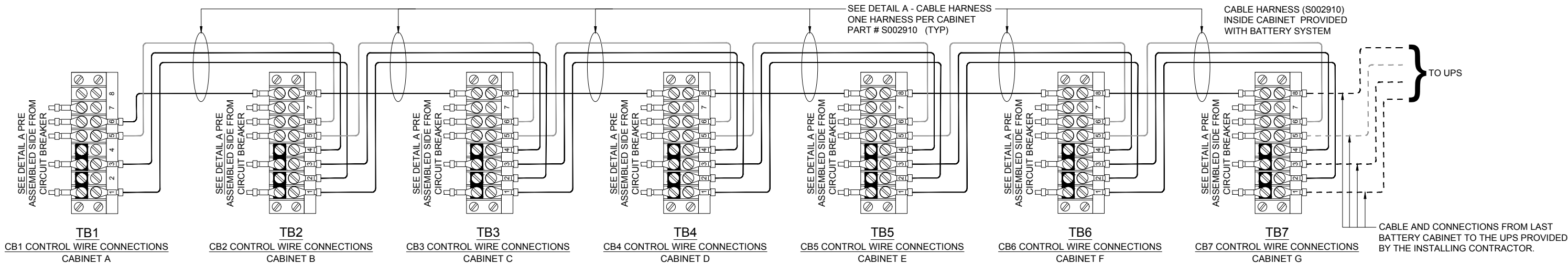


ABB MEGAFLEX UPS BATTERY SKU MGH1600-7-4B-ALT

THE INFORMATION CONTAINED IN THIS DRAWING IS THE SOLE PROPERTY OF INTRAPACK INDUSTRIES INC. ANY REPRODUCTION IN PART OR WHOLE WITHOUT THE WRITTEN PERMISSION OF INTRAPACK INDUSTRIES INC. IS PROHIBITED.

NO.	DATE	REVISION DESCRIPTION
01	06/23/2020	THERMOSTAT WIRING UPDATE SEE SHEET 6

IntraPack
WWW.INTRAPACK.COM

10650 MARKISON ROAD
DALLAS, TX. 75238
PHONE: 214-348-7105
EMAIL: SALES@INTRAPACK.COM
© INTRAPACK 2020

SYSTEM WEIGHT: 58,380 lbs			
JOB NO.	N/A	DATE:	01/29/2021
QUOTE NO.	IPC20-1025	DRAWN BY:	SM
SCALE:	N.T.S.	APPR. BY:	

ADJACENT REMOTE FRONT TERMINAL BATTERY CABINET SYSTEM NEXSTAR MEDIA - INDIANAPOLIS, IN
DRAWING NO. IP8F1K-280D10F-480-7-7D600-AR-JC