

[Help](#)

DCS800
DC Drives



**CoDeSys Exercise
Sampling Trace
G562e_a_b Part 14**

eLearning



Note:
This module is an exercise without a speaker!



© Copyright 11/8/2021 / ABB. All rights reserved.
CODESYS_14R0101 page 1

Welcome to the [Module title] training module for the [Product name], ABB [Product family].

If you need help navigating this module, please click the Help button in the top right-hand corner. To view the presenter notes as text, please click the Notes button in the bottom right corner.

Objectives

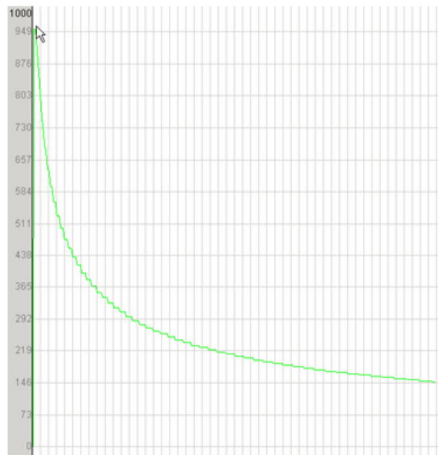
After completing this module, you will be able to

- Record signals and variables
- Evaluate the results

After completing this module, you will be able to

What is a “Sampling Trace”?

- In some cases it's helpful to record signals to test the application or check variables
- The result will be shown in a graph which can be configured

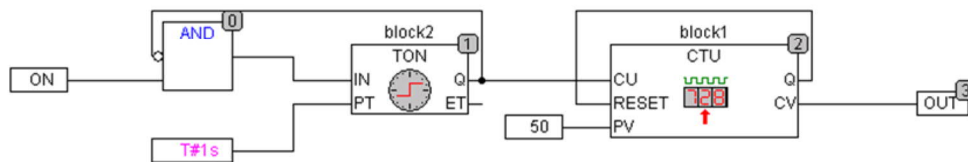
**ABB**

Sampling Trace benefits

- With the tool “Sampling Trace” you have the possibility to record dynamic processes
- To use this tool it's necessary to have a running program and a connection between drive and pc
- All variables inside CoDeSys can be selected to make a record
- It's possible to record up to 7 signals
- During the record the program must be in „Run Mode“

Exercise: Record a variable

- Open a new program
- Create a PLC_PRG as CFC
- Construct the program like in the picture below
- This program counts up from 0...50 and begins once again

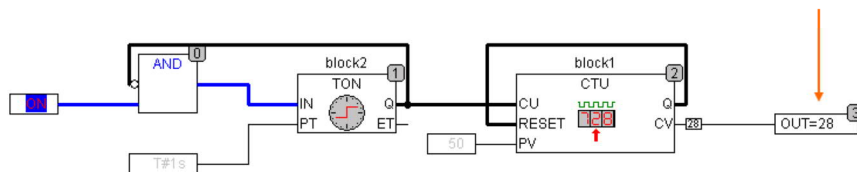


© Copyright 11/8/2021 ABB. All rights reserved.
CODESYS_14R0101 page 5

ABB

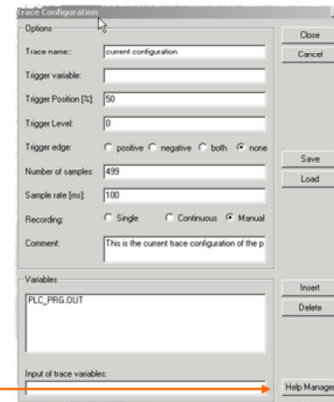
Configure the communication

- Configure the communication to the DCS800
- Configure the „Task settings“
- Login and Run the system
- Set the variable „ON“ TRUE
- Now the program runs

**ABB**

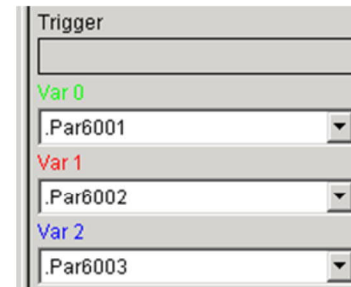
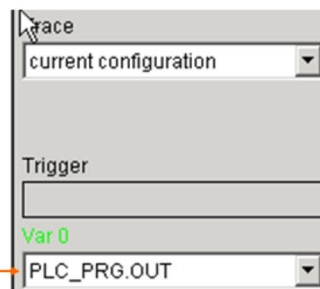
Trace configuration

- Change to window „Sampling Trace“
→ Resources → Sampling Trace
- Configure the “Trace configuration”
→ Extras → Trace configuration
- Then you see the several configuration settings
- Select variables from the list which should be recorded
→ Help Manager
- To finish the settings click to *Close*, please

**ABB**

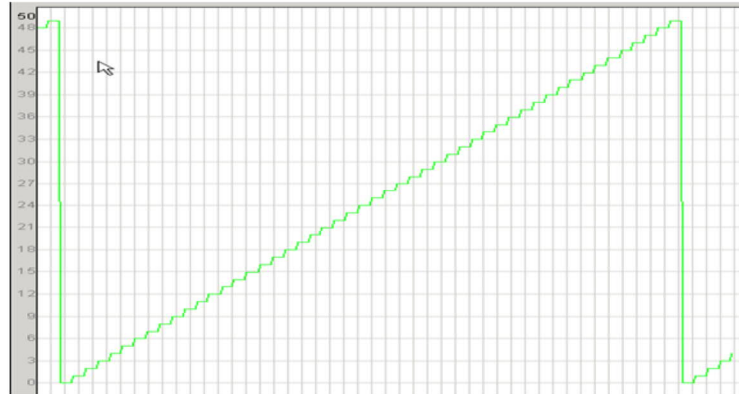
Allocate the colors

- Now it's necessary to allocate the variables with the colors of the graphical window
- The variables which are selected in the "Trace configuration" are available in the pull down menu
- Select PLC_PRG.OUT variable



Start recording

- Enable the record
 - Extras → Start Trace AND Auto Read Trace
- Now the record is running
- The result should look like the picture below



Summary

Key points of this module

- Record the values of variables

Here are the key points of this module.

Additional information

■ Links to related information

- 3S-software.com
- DC-Drive-News (Intranet)

■ Additional references

- Application Manual (3ADW 000 199)
- Firmware Manual (3ADW 000 193)
- Hardware Manual (3ADW 000 194)
- Training Material

Glossary

- **CoDeSys**
Controller Development System (software tool)
- **Memory Card**
Flash memory
- **DriveWindow Light**
Software Tool for commissioning and maintenance using AC/DC
- **Target**
Interface between Drive and CoDeSys tool
- **Control Builder**
Whole system with software and hardware
- **PLC_PRG**
Main program which is used in all applications
- **POU**
Program Organization Unit
- **Library**
It includes function blocks which are given or designed by other users





Power and productivity
for a better world™

Thank you for your attention. You may now go ahead and move on to the next unit.