

# TZIDC-200

## Digital positioner



ATEX/UKEX/IECEX

Digital positioner for the positioning of pneumatically controlled final control elements.

—  
TZIDC-200

### Introduction

The TZIDC-200 has an integral mount design, features a modular structure and offers an outstanding price-performance ratio. Fully automatic determination of the control parameters and adaptation to the final control element allow for considerable time savings as well as optimum control behavior.

### Additional Information

Additional documentation on TZIDC-200 is available for download free of charge at [www.abb.com/positioners](http://www.abb.com/positioners). Alternatively simply scan this code:



## Table of contents

<b>1 Safety.....</b>	<b>3</b>	<b>7 Pneumatic Connections .....</b>	<b>28</b>
General information and instructions.....	3	Safety instructions.....	28
Warnings .....	3	Information on double acting actuators with spring- return mechanism .....	28
Intended use .....	3	Notes on ABB pressure gauge blocks.....	28
Improper use.....	3	Connection on the device.....	29
Cable glands.....	3	Air supply.....	29
Cyber security disclaimer.....	4		
Software downloads .....	4	<b>8 Commissioning .....</b>	<b>30</b>
Manufacturer's address .....	4	Operating modes .....	30
Service address .....	4	Standard automatic adjustment .....	31
		Standard automatic adjustment for linear actuators*	31
<b>2 Use in potentially explosive atmospheres .....</b>	<b>5</b>	Standard automatic adjustment for rotary actuators*	31
General requirements .....	5	Sample parameters .....	31
Approvals and certifications .....	5	Setting the mechanical position indication .....	32
Explosion protection approvals .....	5	Setup of the feedback on the actuator position using proximity switches.....	32
Standards applied .....	5	Setup of the feedback on the actuator position using microswitches.....	33
Product identification.....	5		
Marking (name plate).....	5	<b>9 Operation.....</b>	<b>34</b>
Commissioning, Installation .....	6	Safety instructions.....	34
Notes for operation.....	6	Parameterization of the device.....	34
Use, Operation.....	6	Menu navigation .....	34
Maintenance, repair.....	7	Menu levels .....	35
Preconditions for safe operation of the positioner.....	8		
Cable gland.....	8	<b>10 Maintenance .....</b>	<b>36</b>
ATEX / UKEX .....	9	<b>11 Recycling and disposal .....</b>	<b>36</b>
Type of protection Ex d - flameproof (enclosure) .....	9	<b>12 Additional documents .....</b>	<b>36</b>
Type of protection Ex i, intrinsic safety.....	10	<b>13 Appendix .....</b>	<b>37</b>
IECEX .....	11	Return form .....	37
Type of protection Ex d - flameproof (enclosure) .....	11		
Type of protection Ex i, intrinsic safety.....	11		
<b>3 Product identification .....</b>	<b>13</b>		
Name plate .....	13		
<b>4 Transport and storage.....</b>	<b>14</b>		
Inspection.....	14		
Transporting the device .....	14		
Storing the device.....	14		
Ambient conditions .....	14		
Returning devices .....	14		
<b>5 Installation .....</b>	<b>15</b>		
Safety instructions .....	15		
Mechanical mounting.....	15		
Measurement and operating range to HW-Rev.: 5.0... 15			
Measurement and operating range from HW-Rev.: 5.01 with optional contactless position feedback.....	17		
Mounting on linear actuators .....	18		
Mounting on rotary actuator.....	21		
<b>6 Electrical connections.....</b>	<b>23</b>		
Safety instructions .....	23		
TZIDC-200 terminal assignment .....	24		
Electrical data for inputs and outputs.....	25		
Option modules.....	25		
Connection on the device .....	26		
Conductor cross-section.....	27		

# 1 Safety

## General information and instructions

These instructions are an important part of the product and must be retained for future reference.

Installation, commissioning, and maintenance of the product may only be performed by trained specialist personnel who have been authorized by the plant operator accordingly. The specialist personnel must have read and understood the manual and must comply with its instructions.

For additional information or if specific problems occur that are not discussed in these instructions, contact the manufacturer.

The content of these instructions is neither part of nor an amendment to any previous or existing agreement, promise or legal relationship.

Modifications and repairs to the product may only be performed if expressly permitted by these instructions.

Information and symbols on the product must be observed.

These may not be removed and must be fully legible at all times.

The operating company must strictly observe the applicable national regulations relating to the installation, function testing, repair and maintenance of electrical products.

## Warnings

The warnings in these instructions are structured as follows:

### **DANGER**

The signal word '**DANGER**' indicates an imminent danger. Failure to observe this information will result in death or severe injury.

### **WARNING**

The signal word '**WARNING**' indicates an imminent danger. Failure to observe this information may result in death or severe injury.

### **CAUTION**

The signal word '**CAUTION**' indicates an imminent danger. Failure to observe this information may result in minor or moderate injury.

### **NOTICE**

The signal word '**NOTICE**' indicates possible material damage.

### Note

'**Note**' indicates useful or important information about the product.

## Intended use

Positioning of pneumatically controlled actuators; designed for mounting on linear and rotary actuators.

The device is designed for use exclusively within the stated values on the name plate and in the data sheet.

- The maximum operating temperature must not be exceeded.
- The maximum ambient temperature must not be exceeded.
- The housing's rating must be observed during operation.

## Improper use

The following are considered to be instances of especially improper use of the device:

- For use as a climbing aid, for example for mounting purposes.
- For use as a bracket for external loads, for example as a support for piping, etc.
- Material application, for example by painting over the housing, name plate or welding/soldering on parts.
- Material removal, for example by spot drilling the housing.

## Cable glands

Cable glands should be selected and implemented by the operator in accordance with their use and application requirements.

The cable glands must comply with the requirements of EN 60079-1, EN 60079-7, EN 60079-11 or EN 60079-15.

Especially in Ex applications, the requirements of the appropriate type of protection should be observed.

## ... 1 Safety

### Cyber security disclaimer

This product is designed to be connected to and to communicate information and data via a network interface. It is operator's sole responsibility to provide and continuously ensure a secure connection between the product and your network or any other network (as the case may be).

Operator shall establish and maintain any appropriate measures (such as but not limited to the installation of firewalls, application of authentication measures, encryption of data, installation of anti-virus programs, etc.) to protect the product, the network, its system and the interface against any kind of security breaches, unauthorized access, interference, intrusion, leakage and/or theft of data or information.

ABB and its affiliates are not liable for damages and/or losses related to such security breaches, any unauthorized access, interference, intrusion, leakage and/or theft of data or information.

### Software downloads

By visiting the web pages indicated below, you will find notifications about newly found software vulnerabilities and options to download the latest software. It is recommended that you visit this web pages regularly:

[www.abb.com/cybersecurity](http://www.abb.com/cybersecurity)

[ABB Library – TZIDC-200 – Software downloads](#)



### Manufacturer's address

**ABB AG**  
**Measurement & Analytics**  
Schillerstr. 72  
32425 Minden  
Germany  
Tel: +49 571 830-0  
Fax: +49 571 830-1806

### Service address

To find your local ABB contact visit:  
[www.abb.com/contacts](http://www.abb.com/contacts)

For more information visit:  
[www.abb.com/measurement](http://www.abb.com/measurement)

## 2 Use in potentially explosive atmospheres

### General requirements

- The ABB positioner has been approved only for appropriate and intended use in standard industrial atmospheres. Any breach of this rule leads to a cancellation of warranty and manufacturer's responsibility!
- Make sure that only devices which comply with the types of protection relevant to the applicable zones and categories are installed.
- All electric equipment has to be suited for the respective intended use.

### Approvals and certifications

The digital positioner TZIDC-200 has a variety of different explosion protection approvals. The scope of these approvals extends over the entire EU, Switzerland, and special countries.

They range from explosion protection approvals in accordance with ATEX directives to internationally recognized approvals such as IECEx, and additionally include country-specific explosion protection approvals.

#### Explosion protection approvals

- ATEX Ex d / Ex i, UKEX Ex d / Ex i, for details, see page 9.
- IECEx Ex d / Ex i, for details, see page 11.

#### Standards applied

The standards including the date of issue with the devices are in compliance are specified in the EU Type examination certificate and in the declaration of conformity of the manufacturer.

### Product identification

Depending on the type of explosion protection, Ex-marking is attached to the positioner on the left, next to the main name plate.

This indicates the level of explosion protection and the device's relevant Ex certificate.

#### Marking (name plate)



Figure 1: Marking (example)

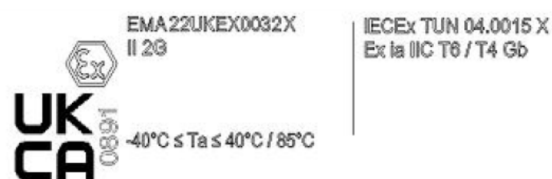


Figure 2: Ex marking (example, UKEX)

#### Note

Before the initial installation and commissioning, the operator decides whether to use the device:

- Either as a device with the intrinsically safe 'Ex i' type of protection or
- Or as a device with the 'Ex d' type of protection

The operator must permanently mark the selected type of use on the name plate.

Specific conditions of the surrounding environment, such as chemical corrosion, must be taken into account when affixing the permanent mark. Only the manufacturer must change the selected type of use following a re-examination

## ... 2 Use in potentially explosive atmospheres

### Commissioning, Installation

The ABB positioner has to be mounted in a major system. Depending on the degrees of IP-protection, an interval for cleaning the equipment (dust settlement) has to be defined. Strict care has to be taken that only devices which comply with the types of protection relevant to the applicable zones and categories is installed.

When installing the device, the locally applicable installation regulations, such as EN 60079-14, must be observed.

Other important facts to be observed:

- The electric circuits of the positioner must be put into operation in all zones by persons qualified in accordance with TRBS 1203. The details on the type label are mandatory for doing this.
- The device has been designed in accordance with IP 65 (optionally IP 66) and must be protected accordingly against adverse ambient conditions.
- In accordance with the selected Ex approval, the information in the EU type examination certificate or the Ex certificates must be observed, including the special conditions defined in them.
- The device may only be used in accordance with its intended use.
- The device may only be connected when de-energized.
- The potential equalization of the system must be established in accordance with installation regulations applicable in the respective country (VDE 0100, Part 540, IEC 364-5-54).
- Circulating currents must not be guided through the housing!
- Make sure that the housing is properly installed and that its IP rating has not been compromised.
- In potentially explosive atmospheres, assembly may be conducted only in compliance with locally applicable installation regulations. The following conditions have to be observed (incomplete):
  - Assembly and maintenance may only be conducted if there is no explosion hazard in the area and you have a hot work permit.
  - The TZIDC-200 may be operated in a fully mounted and intact housing only.

### Notes for operation

- The positioner must be integrated in the local potential equalization system.
- Only either intrinsically safe or non intrinsically safe circuits may be connected. A combination is not permitted.
- If the positioner is operated with non intrinsically safe circuits, later use for the intrinsic safety type of protection is not permitted.

### Use, Operation

The TZIDC-200 is approved for proper and intended use only. In case of non-compliance, the warranty and manufacturer's liability do no longer apply!

- Only those auxiliary components which fulfill all the requirements of European and national standards may be used in potentially explosive atmospheres.
- The ambient conditions specified in the operating instruction must be strictly followed.
- The TZIDC-200 is approved for proper and intended use in standard industrial atmospheres only. Where aggressive substances are present in the air, the manufacturer has to be consulted.

## Maintenance, repair

Definition of terms according to IEC 60079-17:

### Maintenance

Defines a combination of actions performed to maintain or restore the condition of an item such that the item meets the requirements of the relevant specification and performs its required functions.

### I –Analyzer module without electronics module (power supply):

Defines an action which involves careful inspection of an item (either without disassembly or with partial disassembly, as required) supplemented by measurements, aimed at achieving a reliable conclusion regarding the condition of the item.

### Visual inspection

Defines an inspection which identifies defects which are visible to the naked eye, such as missing screws, without the use of access equipment and tools.

### Close inspection

Defines an inspection which encompasses the aspects covered by a visual inspection and in addition, identifies defects such as loose screws, which can only be detected with the use of access equipment (e.g. steps) and tools.

### Detailed inspection

Defines an inspection which encompasses the aspects covered by a close inspection and in addition, identifies defects, such as loose connections, which can only be detected by opening the housing and / or by using tools and test devices, as needed.

- Maintenance and exchange work may be conducted by qualified specialists only, i.e., qualified personnel in accordance with TRBS 1203 or similar.
- Only those auxiliary components which fulfill all the requirements of European and national guidelines and regulations may be used in potentially explosive atmospheres.
- Maintenance works that require disassembly of the system may only be performed in non-hazardous areas. If that is not possible, however, the usual precautions have to be ensured according to local regulations.
- Components may only be replaced by original spare parts which are therefore approved for use in potentially explosive atmospheres.
- The device must be regularly cleaned when used in potentially explosive atmospheres. The intervals must be defined by the operator in compliance with the ambient conditions present at the operating location.
- After all maintenance and repair work has been completed, any barriers and plates removed for that purpose must be put back in their original place.
- The flameproof joints differ from the tables of IEC 60079-1 and may be repaired by the manufacturer only.

Activity	Visual inspection (every 3 months)	Close inspection (every 6 months)	Detailed inspection (every 12 months)
Visual inspection of the positioner for integrity, removal of dust deposits	●		
Inspection of electric installation for integrity and proper operation			●
Inspection of the entire installation		Responsibility of the operator	

## ... 2 Use in potentially explosive atmospheres

### Preconditions for safe operation of the positioner

#### **DANGER**

##### **Risk of explosion due to hot parts**

Hot parts inside the device pose an explosion hazard.

- Never open the device immediately after switch-off.
- A waiting time of at least four minutes should be observed before opening the device.

#### **NOTICE**

##### **Damage to components**

If the sealing surface is damaged, 'Ex d' explosion protection is no longer guaranteed.

- Handle the housing cover carefully.
- Place the housing cover on a smooth and clean surface only!

#### **Cable gland**

Limited temperature range of the M20 × 1.5 plastic cable gland for explosion protection variants:

- The permissible ambient temperature range is –20 to 80 °C (–4 to 176 °F).
- When using the cable gland, you need to make sure that the ambient temperature is within the permissible range plus 10 K or that they are suited in terms of the minimal ambient temperature.
- The cable gland must be installed in the housing with a tightening torque of 3.8 Nm. When installing the connection of the cable gland and cable, check for tightness to ensure that the required IP rating is met.

When using in hazardous areas, observe the following points:

- Observe the specification and special conditions applicable for the device in accordance with the relevant valid certificate.
- Manipulation of the device in any form by the user is not permitted. Only the manufacturer or an explosion protection specialist may modify the device
- Never operate the device without the splash guard.
- The device may only be operated using instrument air that is free from oil, water and dust. The use of flammable gas, oxygen, or oxygen-enriched gas is not permitted.
- High / recurring charging processes in gas zones must be excluded by the operator.



## ATEX / UKEX

### Type of protection Ex d - flameproof (enclosure)

#### Ex-marking

Ex marking	
Marking	II 2 G Ex db IIC T6/T5/T4 Gb
Type examination certificate (ATEX)	DMT 02 ATEX E 029 X
Certificate (UKEX)	See attached certificate.
Type of protection	Flameproof enclosure 'd'
Device class	II 2 G
Standards	EN 60079-0, EN 60079-1

#### Special conditions

- Before the final installation, the operator decides on the use of the device, either
  - as a device with the intrinsically safe 'Ex i' type of protection or
  - as a device with the 'Ex d' type of protection
 The selected type of use must be permanently marked on the name plate. Specific conditions of the surrounding environment, such as chemical corrosion, must be taken into account when affixing the permanent mark. Only the manufacturer must change the selected type of use following a re-examination
- Medium strength adhesive must be used to secure the cable entries and line entries and stop them from twisting and self-loosening
- In the case of high torsional forces, the bearing sleeves must be replaced due to wear on the shaft for the position pickoff (significant control deviation).
- If the positioner is operated at an ambient temperature above 60 °C (140 °F) or below -20 °C (-4 °F), make sure to use cable entries and lines suited for an operating temperature corresponding to the maximum ambient temperature increased by 10 K or corresponding to the minimum ambient temperature, respectively.
- Only use suited cable entries that meet the requirements of EN 60079-1.
- The dimensions of the flameproof joint of this equipment partly exceed the minimum values required by EN 60079-1 or IEC 60079-1 and also partly fall below the maximum required values therein. All inquiries relating to dimensions must be directed to the manufacturer
- Screws that comply with the minimum requirements of the A2-70, A2-80 or 10.12 quality grades must be used to close the flameproof enclosure.

#### Temperature data

Temperature class	Ambient temperature Ta
T4	-40 to 85 °C
T5	-40 to 80 °C
T6	-40 to 65 °C

#### Electrical Data

Voltage	≤ 30 V AC/DC
Current	≤ 20 mA

#### Pneumatic data

Supply pressure	Standard version: ≤ 6 bar
	Marine version: ≤ 5.5 bar

## ... 2 Use in potentially explosive atmospheres

### Type of protection Ex i, intrinsic safety

#### Ex-marking

Ex marking	
Marking	II 2 G Ex ia IIC T6/ T4...T1 Gb II 2 G Ex ib IIC T6/ T4 ...T1 Gb II 3 G Ex ic IIC T6/T4 ... T1 Gc
Type Examination Test Certificate	TÜV 04 ATEX 2702 X
Certificate (UKEX)	EMA22UKEX0032X
Type of protection	Intrinsic safety 'i'
Device class	II 2G / II 3G
Standards	EN 60079-0, EN 60079-11

#### Special conditions

- The power supply for the 'Feedback on the actuator position using proximity switches (Pepperl & Fuchs SJ2-SN)' circuit must be provided intrinsically safe in accordance with the PTB 00 ATEX 2049 X certificate according to application type 2.
- It is only permissible to connect, disconnect, and switch live circuits during installation or maintenance, or for the purpose of carrying out repairs.

#### Note

It is considered very unlikely that a potentially hazardous atmosphere would be present in Zone 2 at the same time that installation or maintenance or repair work was being carried out.

- Only non-flammable gases must be used for pneumatic power supply.
- Only use suited cable entries that meet the requirements of EN 60079-11.

#### Temperature Data

##### Device group II 2 G / II 3 G

Temperature class	Ambient temperature Ta
T4 to T1	-40 to +85 °C
T6*	-40 to 40 °C*

\* When using the 'Plug-in module for digital feedback' in temperature class T6, the maximum permissible ambient temperature range is -40 to +35 °C.

#### Electrical Data

In type of protection 'Intrinsic safety Ex ib, Ex ia or Ex ic', only for connection to a certified intrinsically safe circuit.

Current circuit (terminal)	Electrical information (maximum values)	
Signal circuit (+11 / -12)	U <sub>i</sub> = 30 V I <sub>i</sub> = 320 mA P <sub>i</sub> = 1.1 W	C <sub>i</sub> = 6.6 nF L <sub>i</sub> = negligibly small
Contact input (+81 / -82)	U <sub>i</sub> = 30 V I <sub>i</sub> = 320 mA P <sub>i</sub> = 1.1 W	C <sub>i</sub> = 14.5 nF L <sub>i</sub> = negligibly small
Switch output (+83 / -84)	U <sub>i</sub> = 30 V I <sub>i</sub> = 320 mA P <sub>i</sub> = 500 mW	C <sub>i</sub> = 14.5 nF L <sub>i</sub> = negligibly small
Feedback on the actuator position using proximity switches, (Pepperl & Fuchs SJ2-SN) (Limit1: +51 / -52), (Limit2: +41 / -42)	For maximum values, see EU-Type examination certificate PTB 00 ATEX 2049 X Pepperl & Fuchs Type 2 proximity switches	
Plug-in module for digital feedback (+51 / -52) (+41 / -42)	U <sub>i</sub> = 30 V I <sub>i</sub> = 320 mA P <sub>i</sub> = 250 mW	C <sub>i</sub> = 3.7 nF L <sub>i</sub> = negligibly small
Plug-in module for analog feedback (+31 / -32)	U <sub>i</sub> = 30 V I <sub>i</sub> = 320 mA P <sub>i</sub> = 1.1 W	C <sub>i</sub> = 6.6 nF L <sub>i</sub> = negligibly small
Local communication interface (LCI)	Only for connection to a programming device using an ABB LCI adapter (U <sub>m</sub> ≤ 30 V DC) outside the hazardous area.	

## IECEX

### Type of protection Ex d - flameproof (enclosure)

#### Ex-marking

Ex marking	
Marking	Ex db IIC T6/T5/T4 Gb
Type Examination Test Certificate	IECEX BVS 07.0030X
Type of protection	Druckfeste Kapselung „d“
Standards	IEC 60079-0, IEC 60079-1

#### Special conditions

- The positioner is designed for a maximum permissible ambient temperature range of  $-40$  to  $85$  °C ( $-40$  to  $185$  °F)
- Variants that, according to declarations, also meet the requirements for the 'intrinsically safe' type of protection may no longer be used as 'intrinsically safe' if they have been previously used as a flameproof type of protection
- If the positioner is operated at an ambient temperature above  $60$  °C ( $140$  °F) or below  $-20$  °C ( $-4$  °F), make sure to use cable entries and lines suited for an operating temperature corresponding to the maximum ambient temperature increased by  $10$  K or corresponding to the minimum ambient temperature, respectively.
- Only suited cable entries must be used that meet the requirements of EN 60079-1.

#### Temperature data

Temperature class	Ambient temperature $T_a$
T4	$-40$ to $85$ °C
T5	$-40$ to $80$ °C
T6	$-40$ to $65$ °C

#### Electrical Data

Voltage	$\leq 30$ V AC/DC
Current	$\leq 20$ mA

#### Pneumatic data

Supply pressure	Standard version: $\leq 6$ bar
	Marine version: $\leq 5.5$ bar

### Type of protection Ex i, intrinsic safety

#### Ex marking

Ex marking	
Marking	Ex ia IIC T6 resp. T4...T1 Gb Ex ib IIC T6 resp. T4...T1 Gb Ex ic IIC T6 resp. T4...T1 Gc
Type Examination Test Certificate	IECEX TUN 04.0015X
Type	Intrinsic safety 'i'
Standards	IEC 60079-0, IEC 60079-11

#### Special conditions

- The power supply for the 'Feedback on the actuator position using proximity switches (Pepperl & Fuchs SJ2-SN)' circuit must be provided intrinsically safe in accordance with the PTB 00 ATEX 2049 X certificate according to application type 2.
- It is only permissible to connect, disconnect, and switch live circuits during installation or maintenance, or for the purpose of carrying out repairs.

#### Note

It is considered very unlikely that a potentially hazardous atmosphere would be present in Zone 2 at the same time that installation or maintenance or repair work was being carried out.

- Only non-flammable gases must be used for pneumatic power supply.
- Only use suited cable entries that meet the requirements of EN 60079-11.

## ... 2 Use in potentially explosive atmospheres

### ... IECEx

#### Temperature Data

Temperature class	Ambient temperature Ta
T4 to T1	-40 to +85 °C
T6*	-40 to 40 °C*

\* When using the 'Plug-in module for digital feedback' in temperature class T6, the maximum permissible ambient temperature range is -40 to +35 °C.

#### Electrical Data

In type of protection 'Intrinsic safety Ex ib, Ex ia or Ex ic', only for connection to a certified intrinsically safe circuit.

Current circuit (terminal)	Electrical information (maximum values)	
Signal circuit (+11 / -12)	U <sub>i</sub> = 30 V I <sub>i</sub> = 320 mA P <sub>i</sub> = 1.1 W	C <sub>i</sub> = 6.6 nF L <sub>i</sub> = negligibly small
Contact input (+81 / -82)	U <sub>i</sub> = 30 V I <sub>i</sub> = 320 mA P <sub>i</sub> = 1.1 W	C <sub>i</sub> = 14.5 nF L <sub>i</sub> = negligibly small
Switch output (+83 / -84)	U <sub>i</sub> = 30 V I <sub>i</sub> = 320 mA P <sub>i</sub> = 500 mW	C <sub>i</sub> = 14.5 nF L <sub>i</sub> = negligibly small
Local communication interface (LCI)	Only for connection to a programming device using an ABB LCI adapter (U <sub>m</sub> ≤ 30 V DC) outside the hazardous area.	

The following modules may be operated as an option:

Current circuit (terminal)	Electrical information (maximum values)	
Feedback on the actuator position using proximity switches, (Pepperl & Fuchs SJ2-SN) (Limit1: +51 / -52), (Limit2: +41 / -42)	For maximum values, see certificate IECEx PTB 11.0092X Pepperl & Fuchs Type 2 proximity switches	
Plug-in module for digital feedback (+51 / -52) (+41 / -42)	U <sub>i</sub> = 30 V I <sub>i</sub> = 320 mA P <sub>i</sub> = 250 mW	C <sub>i</sub> = 3.7 nF L <sub>i</sub> = negligibly small
Plug-in module for analog feedback (+31 / -32)	U <sub>i</sub> = 30 V I <sub>i</sub> = 320 mA P <sub>i</sub> = 1.1 W	C <sub>i</sub> = 6.6 nF L <sub>i</sub> = negligibly small

**Figure 3: Name plate (sample)**

## 4 Transport and storage

### Inspection

Check the devices immediately after unpacking for possible damage that may have occurred from improper transport. Details of any damage that has occurred in transit must be recorded on the transport documents.

All claims for damages must be submitted to the shipper without delay and before installation.

### Transporting the device

Observe the following instructions:

- Do not expose the device to humidity during transport. Pack the device accordingly.
- Pack the device so that it is protected against vibrations during transport, for example, by using air-cushioned packing.

### Storing the device

Bear the following points in mind when storing devices:

- Store the device in its original packaging in a dry and dust-free location. The device is also protected by a desiccant in the packaging.
- The storage temperature should be between  $-40$  to  $85\text{ }^{\circ}\text{C}$  ( $-40$  to  $185\text{ }^{\circ}\text{F}$ ).
- Avoid storing the device in permanent direct sunlight.
- In principle, the devices may be stored for an unlimited period. However, the warranty conditions stipulated in the order confirmation of the supplier apply.

### Ambient conditions

The ambient conditions for the transport and storage of the device correspond to the ambient conditions for operation of the device.

Adhere to the device data sheet!

### Returning devices

Use the original packaging or a secure transport container of an appropriate type if you need to return the device for repair or recalibration purposes.

Fill out the return form (see **Return form** on page 37) and include this with the device.

In accordance with the EU Directive governing hazardous materials, the owner of hazardous waste is responsible for its disposal or must observe the following regulations for shipping purposes:

All devices delivered to ABB must be free from any hazardous materials (acids, alkalis, solvents, etc.).

### Address for returns:

Please contact Customer Center Service acc. to page 4 for nearest service location.

## 5 Installation

### Safety instructions

#### ⚠ CAUTION

##### Risk of injury

Risk of injury from pressurized positioner / actuator.

- Before starting work on the positioner / actuator, switch off the air supply and vent the positioner / actuator.

#### ⚠ CAUTION

##### Risk of injury due to incorrect parameter values!

Incorrect parameter values can cause the valve to move unexpectedly. This can lead to process failures and result in injuries.

- Before recommissioning a positioner that was previously in use at another location, always reset the device to its factory settings.
- Never start automatic adjustment before restoring the factory settings!

#### Note

Before assembly, check whether the positioner meets the control and safety requirements for the installation location (actuator or final control element).

Refer to the **Specification** in the data sheet.

Only qualified specialists who have been trained for these tasks are authorized to mount and adjust the unit, and to make the electrical connection.

When carrying out any work on the device, always observe the local accident prevention regulations and the regulations concerning the construction of technical installations.

### Mechanical mounting

Measurement and operating range to HW-Rev.: 5.0

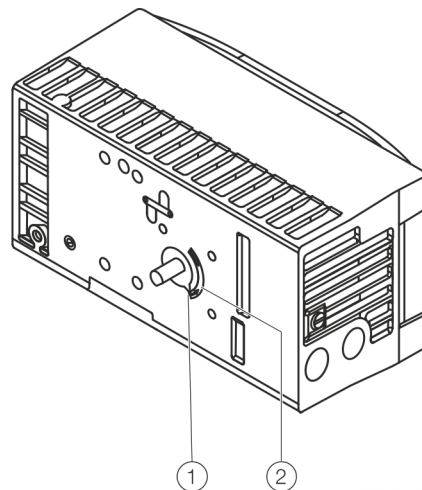
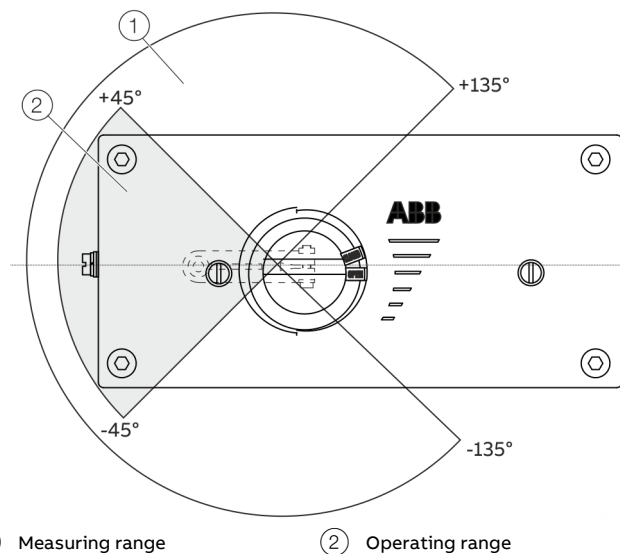


Figure 4: Operating range

Arrow ① on the device feedback shaft (position feedback point) must move between the arrow marks ②.



① Measuring range      ② Operating range

Figure 5: Measuring and operating ranges of the positioner

## ... 5 Installation

### ... Mechanical mounting

**Operating range for linear actuators:**

The operating range for linear actuators is maximum  $\pm 45^\circ$  symmetrically to the longitudinal axis.

The usable span within the operating range is ideally  $40^\circ$ , but at least  $25^\circ$ . The usable span should run as symmetrically to the longitudinal axis as possible.

**Operating range of rotary actuators:**

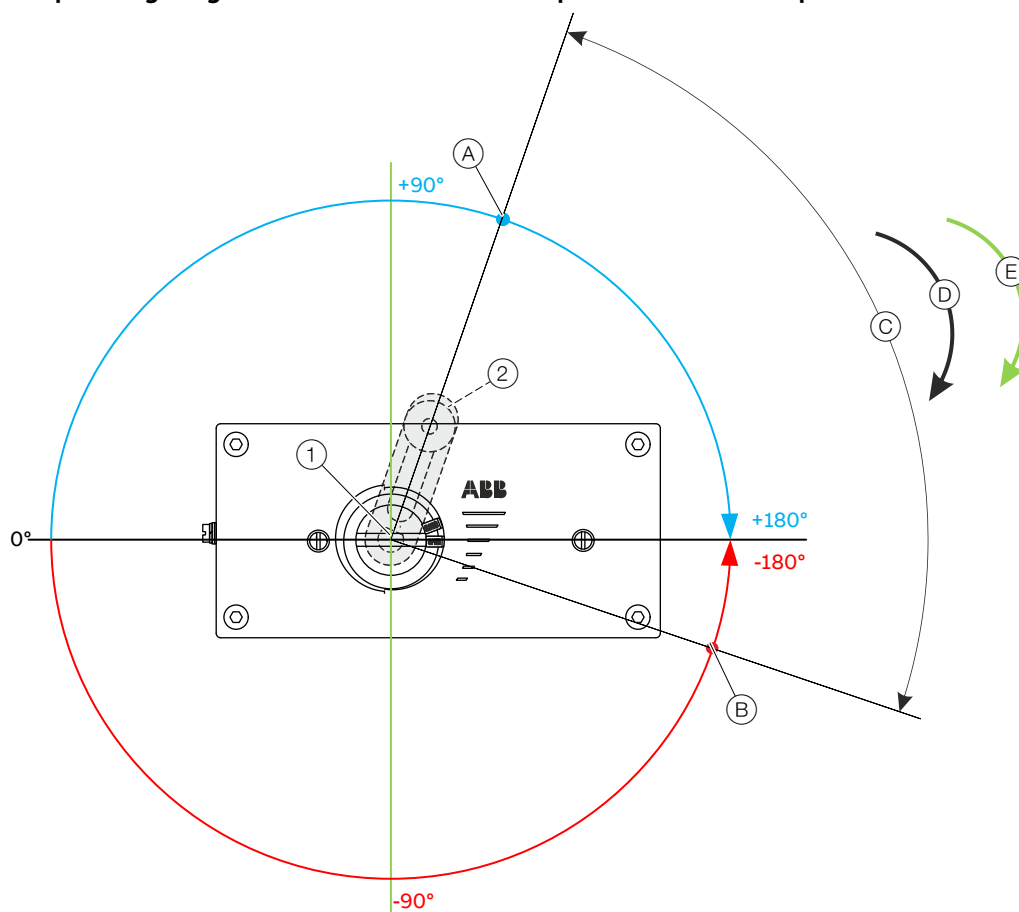
The usable span is  $+57^\circ$  to  $-57^\circ$ , which must be entirely within the measuring range, but does not necessarily need to run symmetrically to the longitudinal axis.

**Note**

During installation make sure that the actuator travel or rotation angle for position feedback is implemented correctly.



### Measurement and operating range from HW-Rev.: 5.01 with optional contactless position feedback



- ① Device feedback shaft
- ② Lever
- (A) Operating range 100% opening degree, OUT1 = supply pressure
- (B) Operating range 0% opening degree, OUT1 = ambient pressure
- (C) Operating range detected by the valve's/actuator's standard automatic adjustment. For rotary actuators, the operating range within each position can be up to 340°.
- (D) Rotational direction for parameter "P6.3 – SPRNG\_Y2" detected by the standard automatic adjustment (When venting OUT 1, the device feedback shaft 1 turns clockwise).
- (E) Rotational direction for parameter "P6.7 – ZERO\_POS" set by the standard automatic adjustment (When venting OUT 1, the device feedback shaft 1 turns clockwise).

Figure 6: Measurement and operating range with contactless position feedback (example for rotary actuators)

Devices from HW rev.: 5.01 can be equipped with the order option "Contactless sensor – S1".  
The position feedback then takes place via a 360° sensor without mechanical end stops.

This allows a wider operating range of up to 350°. The operating range can then be at any point in the sensor range.

#### Automatic adjustment

The standard automatic adjustment for rotary and linear actuators is performed as described in **Standard automatic adjustment** on page 31.

Requirements for automatic adjustment:

- Mechanical end stops on valves
- Close valve by turning it to the right

For different installation situations such as: gear rack actuators, further parameter settings are required. Observe the technical description "TD/TZIDC/TZIDC-200/NON-CONTACT\_SENSOR" for detailed information.

## ... 5 Installation

### ... Mechanical mounting

#### Mounting on linear actuators

For mounting on a linear actuator in accordance with DIN / IEC 60534 (lateral mounting as per NAMUR), the following attachment kit is available.

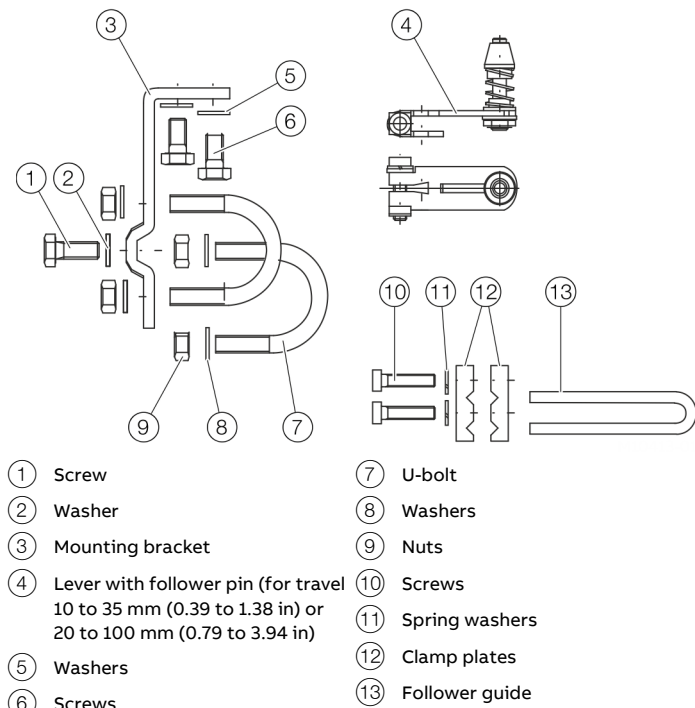


Figure 7: Components of attachment kit

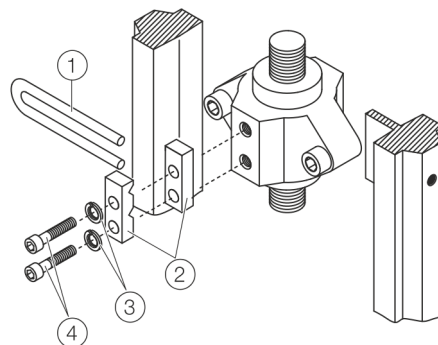


Figure 8: Attaching a follower guide to the actuator

1. Tighten the screws so that they are hand-tight.
2. Attach the follower guide ① and clamp plates ② with screws ④ and spring washers ③ to the actuator stem.

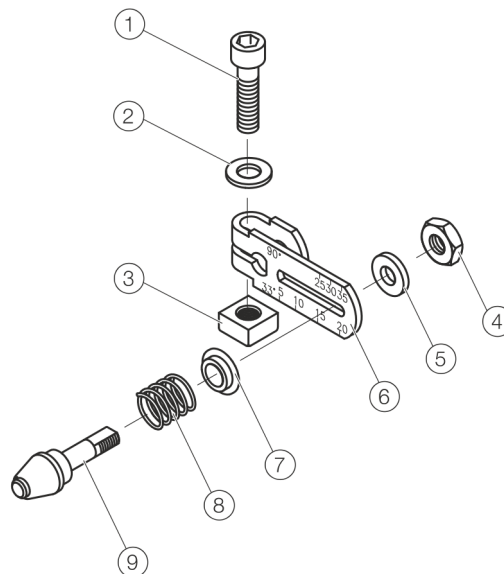


Figure 9: Assemble lever (if not pre-assembled)

1. Insert spring ⑧ on bolt with follower pin ⑨.
2. Slip the plastic washer ⑦ onto the bolt and compress the spring with it.
3. Insert the bolt with compressed spring into the oblong hole in the lever ⑥ and fasten it in the desired position using the plain washer ⑤ and nut ④ at the lever. The scale on the lever indicates the link point for the stroke range.
4. Place the washer ② on the screw ①. Insert the screw in the lever and lock with the nut ③.

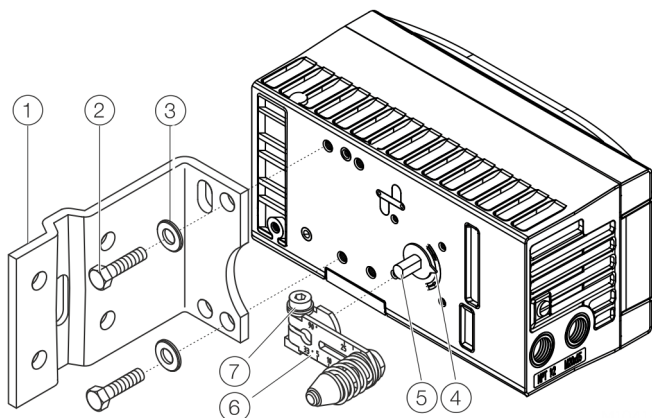


Figure 10: Mounting lever and bracket on the positioner

1. Attach the lever ⑥ to the feedback shaft ⑤ of the positioner (can only be mounted in one position due to the cut shape of the feedback shaft).
2. Using the arrow marks ④, check whether the lever moves within the operating range (between the arrows).
3. Hand-tighten the screw ⑦ on the lever.
4. Hold the prepared positioner with the mount bracket ① still loose on the actuator so that the follower pin for the lever enters the follower guide to determine which tap holes on the positioner must be used for the mount bracket.
5. Secure the mount bracket ① with screws ② and washers ③ using the relevant tap holes on the positioner housing. Tighten the screws as evenly as possible to ensure subsequent linearity. Align the mount bracket in the oblong hole to ensure that the operating range is symmetrical (lever moves between the arrow marks ④).

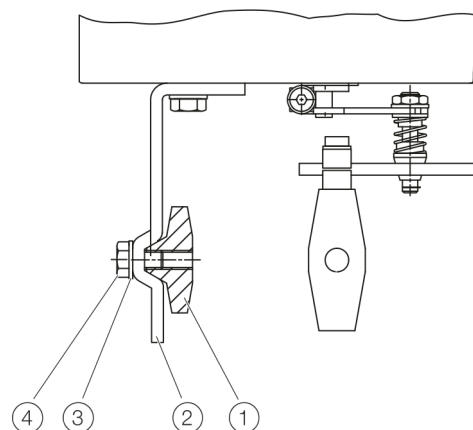


Figure 11: Mounting on a cast iron yoke

1. Attach the mount bracket ② with screw ④ and washer ③ to the cast iron yoke ①.

or

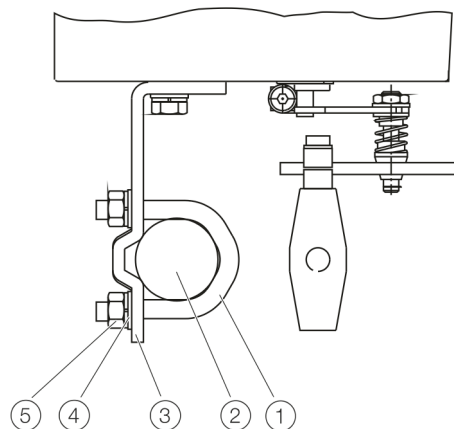


Figure 6: Mounting on a columnar yoke

1. Hold the mount bracket ③ in the proper position on the columnar yoke ②.
2. Insert the U-bolts ① from the inside of the columnar yoke ② through the holes of the mount bracket.
3. Add the washers ④ and nuts ⑤.
4. Tighten the nuts so that they are hand-tight.

#### Note

Adjust the height of the positioner on the cast iron yoke or columnar yoke until the lever is horizontal (based on a visual check) at half stroke of the valve.

... 5 Installation

... Mechanical mounting

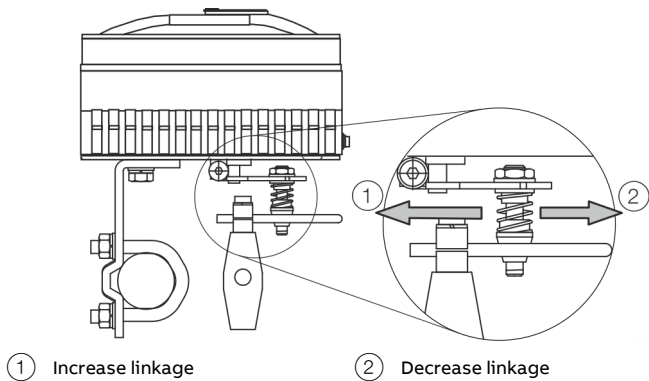


Figure 12: Positioner linkage

The scale on the lever indicates the link points for the various stroke ranges of the valve.

Move the bolt with the follower pin in the oblong hole of the lever to adjust the stroke range of the valve to the working range for the position sensor.

Moving the link point inwards increases the rotation angle of the position sensor. Moving the link point outwards reduces the rotation angle of the position sensor.

Adjust the actuator stroke to make use of as large an angle of rotation as possible (symmetrical around the center position) on the position sensor.

Recommended range for linear actuators:  
40°

Minimum angle:  
25°

**Note**  
After mounting, check whether the positioner is operating within the measuring range.

Position of actuator bolt

The actuator bolt for moving the potentiometer lever can be mounted permanently on the lever itself or on the valve stem. Depending on the mounting method, when the valve moves the actuator bolt performs either a circular or a linear movement with reference to the center of rotation of the potentiometer lever. Select the chosen bolt position in the HMI menu in order to ensure optimum linearization. The default setting is actuator bolt on lever.

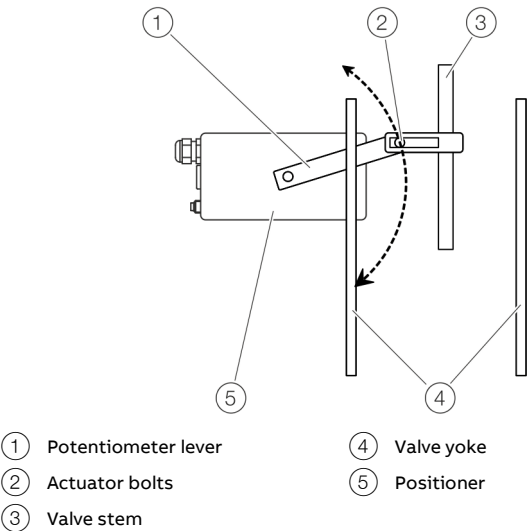


Figure 13: Actuator bolts on the lever

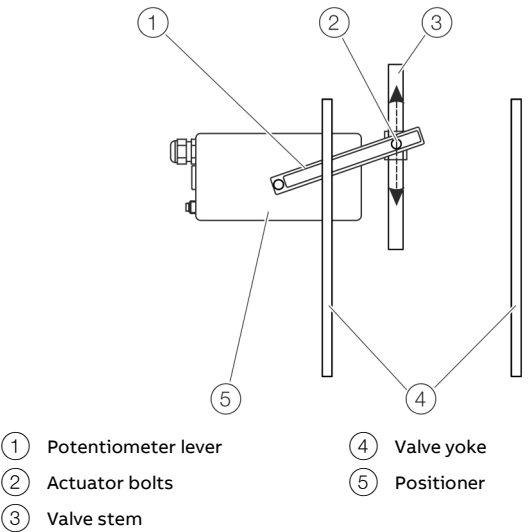


Figure 14: Actuator bolts on the valve

### Mounting on rotary actuator

For mounting on part-turn actuators in accordance with VDI / VDE 3845, the following attachment kit is available:

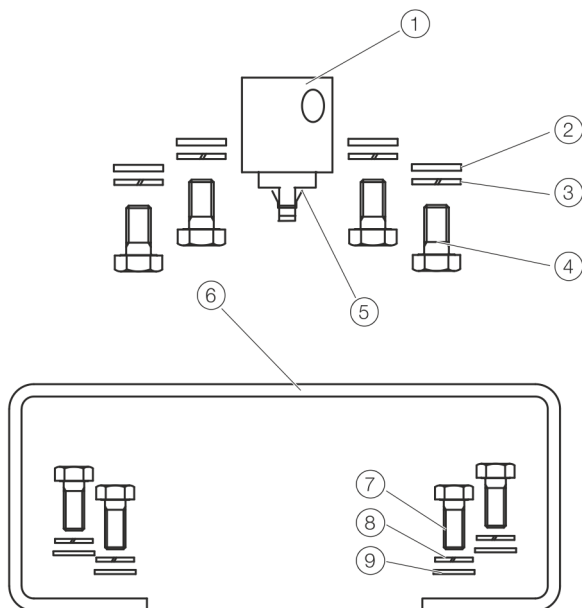


Figure 15: Attachment kit components

- Adapter (1) with spring (5)
- four M6 screws each (4), spring washers (3) and washers (2) for fastening the attachment bracket (6) on the positioner
- four M5 screws each (7), spring washers (8) and washers (9) for fastening the attachment bracket to the actuator

#### Required tools:

- Wrench, size 8 / 10
- Allen key, size 3

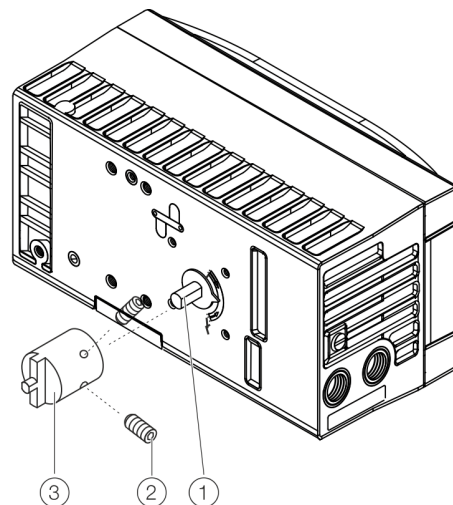
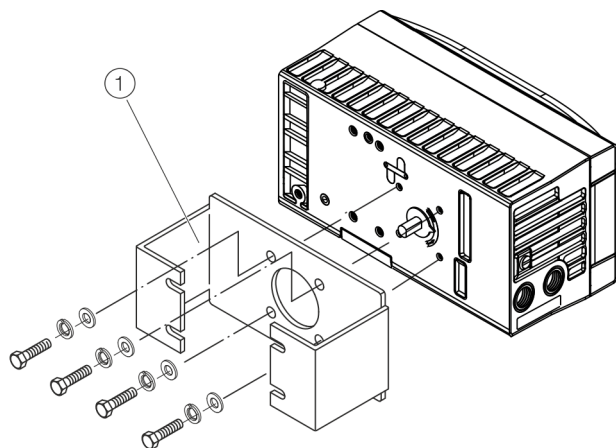


Figure 16: Mounting the adapter on the positioner

1. Determine the mounting position (parallel to actuator or at 90° angle)
2. Calculate the rotational direction of the actuator (right or left).
3. Move the part-turn actuator into the home position.
4. Pre-adjust feedback shaft.  
In order for the positioner to work within the operating range (see **Measurement and operating range to HW-Rev.: 5.0** on page 15 or **Measurement and operating range from HW-Rev.: 5.01 with optional contactless position feedback** on page 17), the installation position as well as the basic position and rotational direction of the actuator when determining the adapter position on axis (1) must be considered. For this purpose, the axis can be adjusted by hand to set the adapter (3) accordingly in the correct position.
5. Place the adapter in the suited position on the axle and secure with threaded spuds (2). One of the threaded pins must be locked in place on the flat side of the feedback shaft.

## ... 5 Installation

### ... Mechanical mounting



① Attachment bracket

Figure 17: Screwing the mounting bracket onto the positioner

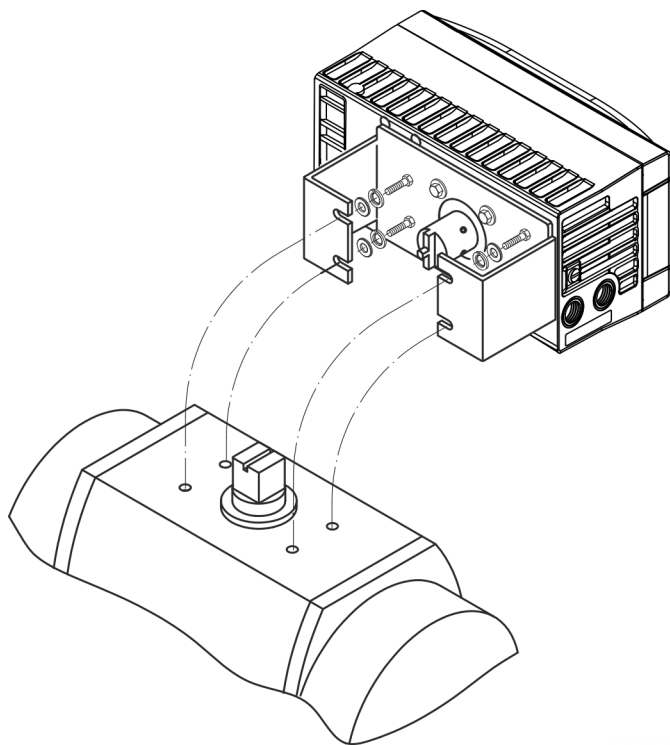


Figure 18: Screwing positioner onto actuator

#### Note

After mounting, check whether the operating range of the actuator matches the measurement range of the positioner, refer to **Measurement and operating range to HW-Rev.: 5.0** on page 15 or **Measurement and operating range from HW-Rev.: 5.01 with optional contactless position feedback** on page 17.

## 6 Electrical connections

### Safety instructions

#### **DANGER**

##### **Risk of explosion for devices with local communication interface (LCI)**

A local communication interface (LCI) may not be operated in hazardous areas.

- Never use the local communication interface (LCI) on the main board in a hazardous area!

#### **WARNING**

##### **Risk of injury due to live parts!**

When the housing is open, contact protection is not provided and EMC protection is limited.

- Before opening the housing, switch off the power supply.

The electrical connection may only be established by authorized specialist personnel.

Notices on electrical connection in this instruction must be observed; otherwise, electric safety and the IP-rating may be adversely affected.

Safe isolation of electric circuits which are dangerous if touched is only guaranteed when the connected devices fulfill the requirements of EN 61140 (basic requirements for secure separation).

To ensure safe isolation, install supply lines so that they are separate from electrical circuits which are dangerous if touched, or implement additional isolation measures for them.

## ... 6 Electrical connections

### TZIDC-200 terminal assignment

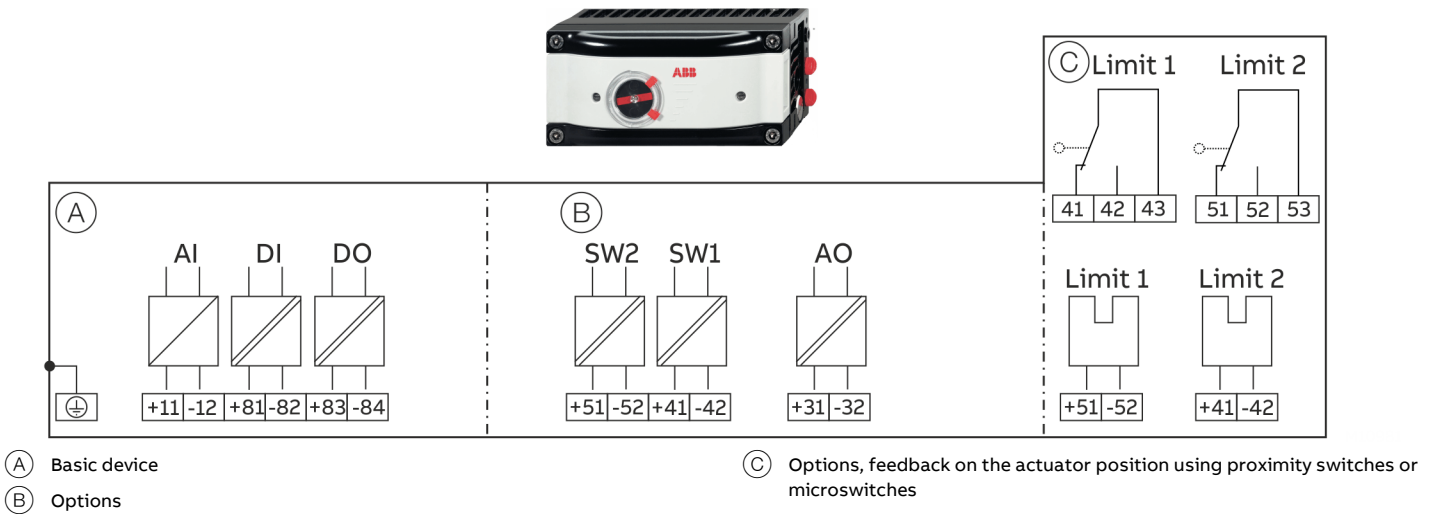


Figure 19: Electrical connection TZIDC-200

#### Connections for inputs and outputs

Terminal	Function/comments
+11 / -12	Analog input
+81 / -82	Binary input DI
+83 / -84	Binary output DO2
+51 / -52	Plug-in module for digital feedback SW1 (Option module)
+41 / -42	Plug-in module for digital feedback SW2 (Option module)
+31 / -32	Plug-in module for analog feedback AO (Option module)

Terminal	Function/comments
+51 / -52	Feedback on the actuator position using proximity switches Limit 1 (optional)
+41 / -42	Feedback on the actuator position using proximity switches Limit 2 (optional)
41 / 42 / 43	Feedback on the actuator position using microswitches Limit 1 (optional)
51 / 52 / 53	Feedback on the actuator position using microswitches Limit 2 (optional)

**Note**  
The TZIDC-200 can be fitted either with proximity switches or microswitches for feedback on the actuator position.



## Electrical data for inputs and outputs

### Note

When using the device in potentially explosive atmospheres, note the additional connection data in **Use in potentially explosive atmospheres** on page 5!

### Analog input

#### Set point signal analog (two-wire technology)

Terminals	+11 / -12
Nominal operating range	4 to 20 mA
Split range configuration	20 to 100 % of the nominal operating range can be parameterized between
Maximum	50 mA
Minimum	3.6 mA
Starting at	3.8 mA
Load voltage	9.7 V at 20 mA
Impedance at 20 mA	485 Ω

### Digital input

Input for the following functions:

- no function
- move to 0 %
- move to 100 %
- Hold previous position
- block local configuration
- block local configuration and operation
- block any access (local or via PC)

#### Binary input DI

Terminals	+81 / -82
Supply voltage	24 V DC (12 to 30 V DC)
Input 'logical 0'	0 to 5 V DC
Input 'logical 1'	11 to 30 V DC
Input Current	maximum 4 mA

### Digital output DO

Output configurable as alarm output by software.

#### Binary output DO

Terminals	+83 / -84
Supply voltage	5 to 11 V DC (Control circuit in accordance with DIN 19234/NAMUR)
Output 'logical 0'	> 0.35 mA to < 1.2 mA
Output 'logical 1'	> 2.1 mA
Direction of action	Configurable 'logical 0' or 'logical 1'

### Option modules

#### Plug-in module for analog feedback AO\*

Without any signal from the positioner (e.g. 'no power' or 'initializing') the module sets the output to > 20 mA (alarm level).

Terminals	+31 / -32
Signal range	4 to 20 mA (split ranges can be parameterized)
• in the event of an error	> 20 mA (alarm level)
Supply voltage, two-wire technology	24 V DC (11 to 30 V DC)
Characteristic curve	rising or falling (configurable)
Deviation	< 1 %

#### Plug-in module for digital feedback SW1, SW2\*

Two software switches for binary position feedback (position adjustable within the range of 0 to 100 %, ranges cannot overlap)

Terminals	+41 / -42, +51 / -52
Supply voltage	5 to 11 V DC (Control circuit in accordance with DIN 19234 / NAMUR)
Output 'logical 0'	< 1.2 mA
Output 'logical 1'	> 2.1 mA
Direction of action	Configurable 'logical 0' or 'logical 1'

\* The module for analog feedback and the module for digital feedback have separate slots and can be used together.

### Mechanical digital feedback

Two proximity switches or microswitches for independent signaling of the actuator position, switching points are adjustable between 0 bis 100 %.

#### Feedback on the actuator position using proximity switches Limit 1, Limit 2

Terminals	+41 / -42, +51 / -52	
Supply voltage	5 to 11 V DC (Control circuit in accordance with DIN 19234/NAMUR)	
Direction of action	Metal tag in the proximity switch	Metal tag outside the proximity switch
Type S32-SN (NC; log 1)	< 1.2 mA	> 2.1 mA

#### Feedback on the actuator position using microswitches Limit 1, Limit 2

Terminals	+41 / -42, +51 / -52
Supply voltage	maximum 24 V AC/DC
Load rating	Maximum 2 A
Contact surface	10 µm Gold (AU)

### Mechanical position indicator

Indicator disk in enclosure cover linked with device feedback shaft.

These options are also available for retrofitting by Service.

## ... 6 Electrical connections

### Connection on the device

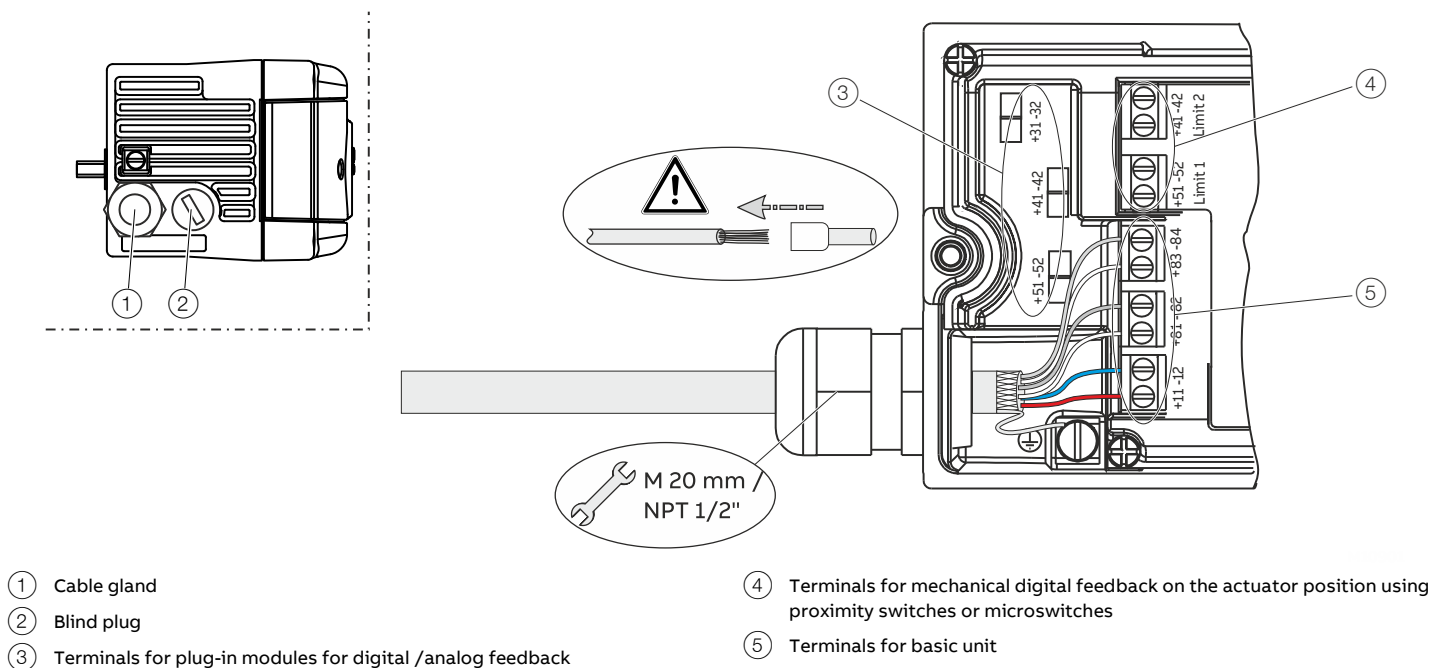


Figure 20: Connection on device (example)

2 tap holes  $\frac{1}{2}$ - 14 NPT or M20  $\times$  1.5 are provided on the left side of the housing for cable entry in the housing.

Cable glands should be selected and implemented by the operator in accordance with their use and application requirements.

The cable glands must comply with the requirements of EN 60079-1, EN 60079-7, EN 60079-11 or EN 60079-15. Especially in Ex applications, the requirements of the appropriate type of protection should be observed.

#### Note

The connecting terminals are delivered closed and must be unscrewed before inserting the wire.

1. Strip the wires to approximately 6 mm (0.24 in).
2. After stripping the cable end, fit the appropriate wire end sleeves and crimp
3. Connect the wires to the connecting terminals in line with the connection diagram.  
Tightening torque for the terminal screws:  
0.5 to 0.6 Nm

## Conductor cross-section

### Basic device


Electrical connections	
4 to 20 mA input	Screw terminals max. 2.5 mm <sup>2</sup> (AWG14)
Options	Screw terminals max. 1.0 mm <sup>2</sup> (AWG18)
Cross section	
Rigid / flexible wires	0.14 to 2.5 mm <sup>2</sup> (AWG26 to AWG14)
Flexible with wire end sleeve	0.25 to 2.5 mm <sup>2</sup> (AWG23 to AWG14)
Flexible with wire end sleeve no plastic sleeve	0.25 to 1.5 mm <sup>2</sup> (AWG23 to AWG17)
Flexible with wire end sleeve with plastic sleeve	0.14 to 0.75 mm <sup>2</sup> (AWG26 to AWG20)
Multi-wire connection capacity (two wire with the same cross-section)	
Rigid / flexible wires	0.14 to 0.75 mm <sup>2</sup> (AWG26 to AWG20)
Flexible with wire end sleeve no plastic sleeve	0.25 to 0.75 mm <sup>2</sup> (AWG23 to AWG20)
Flexible with wire end sleeve with plastic sleeve	0.5 to 1.5 mm <sup>2</sup> (AWG21 to AWG17)

### Option modules

Cross section	
Rigid / flexible wires	0.14 to 1.5 mm <sup>2</sup> (AWG26 to AWG17)
Flexible with wire end sleeve no plastic sleeve	0.25 to 1.5 mm <sup>2</sup> (AWG23 to AWG17)
Flexible with wire end sleeve with plastic sleeve	0.25 to 1.5 mm <sup>2</sup> (AWG23 to AWG17)
Multi-wire connection capacity (two wire with the same cross-section)	
Rigid / flexible wires	0.14 to 0.75 mm <sup>2</sup> (AWG26 to AWG20)
Flexible with wire end sleeve no plastic sleeve	0.25 to 0.5 mm <sup>2</sup> (AWG23 to AWG22)
Flexible with wire end sleeve with plastic sleeve	0.5 to 1 mm <sup>2</sup> (AWG21 to AWG18)
Feedback on the actuator position using proximity switches or microswitches	
Rigid wire	0.14 to 1.5 mm <sup>2</sup> (AWG26 to AWG17)
Flexible wire	0.14 to 1.0 mm <sup>2</sup> (AWG26 to AWG18)
Flexible with wire end sleeve no plastic sleeve	0.25 to 0.5 mm <sup>2</sup> (AWG23 to AWG22)
Flexible with wire end sleeve with plastic sleeve	0.25 to 0.5 mm <sup>2</sup> (AWG23 to AWG22)

## 7 Pneumatic Connections

### Safety instructions

 **CAUTION**

**Risk of injury**  
Risk of injury from pressurized positioner / actuator.

- Before starting work on the positioner / actuator, switch off the air supply and vent the positioner / actuator.

**NOTICE**

**Damage to components!**  
Contamination in the air pipe and positioner can damage components.

- Dust, splinters, and any other particles of dirt must be blown-out before the pipe is connected.

**NOTICE**

**Damage to components!**  
Pressure above 6 bar (90 psi) can damage the positioner or actuator.

- Provisions must be made (e.g. by using a pressure reducer) to make sure that the pressure does not rise above 6 bar (90 psi)\*, even in the event of a fault.

\* 5.5 bar (80 psi) (marine version)

**Note**  
The positioner must only be supplied with instrument air that is free of oil, water, and dust.  
The purity and oil content must meet the requirements of Class 3 in accordance with DIN/ISO 8573-1.

**Information on double acting actuators with spring-return mechanism**  
On double-acting actuators with spring-return mechanism, a pressure that significantly exceeds the supply air pressure value can be generated during operation by the springs in the chamber opposite the springs.  
This may damage the positioner or adversely affect control of the actuator.  
In order to ensure that this behavior cannot occur, it is recommended to install a pressure compensation valve between the springless chamber and the supply air for these types of applications. It enables the increased pressure to be transferred back to the air inlet line.  
The opening pressure of the check valve should be < 250 mbar (< 3.6 psi).

**Notes on ABB pressure gauge blocks**  
The pressure gauge blocks available as accessories from ABB have a restricted operating temperature range and a different IP rating than the positioner.  
The operator must take these restrictions into account when using ABB pressure gauge blocks.

ABB pressure gauge block specification	
Operating temperature range	–5 °C to 60 °C (23 to 140 °F)
IP rating	IP 30

## Connection on the device

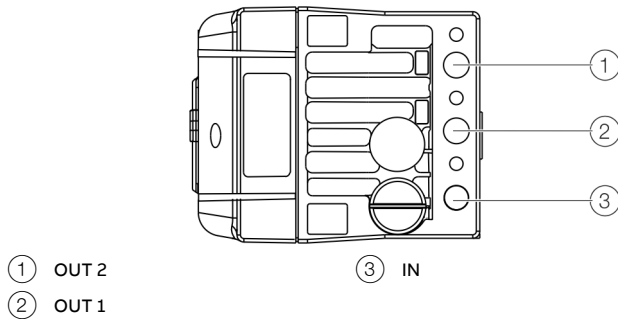


Figure 21: Pneumatic connections

Marking	Pipe connection
IN	Supply air, pressure 1.4 to 6 bar (20 to 90 psi) Marine version: <ul style="list-style-type: none"> <li>Supply air, pressure 1.4 to 5.5 bar (20 to 80 psi)*</li> </ul>
OUT1	Output pressure to the actuator
OUT2	Output pressure to the actuator (2. Connection with double acting actuator)

\* (Marine version)

Join the pipe connections according to the designation, observing the following points:

- All pneumatic piping connections are located on the right-hand side of the positioner. G $\frac{1}{4}$  or  $\frac{1}{4}$  18 NPT tap holes are provided for the pneumatic connections. The positioner is labeled according to the tap holes available.
- We recommend that you use a pipe with dimensions of 12 × 1.75 mm.
- The supply air pressure required to apply the actuating force must be adjusted in line with the output pressure in the actuator. The working range for the positioner is between 1.4 and 6 bar (20 to 90 psi)\*\*.

\*\* 1.4 to 5.5 bar (20 to 80 psi) marine version

## Air supply

### Instrument air\*

Purity	Maximum particle size: 5 µm Maximum particle density: 5 mg/m <sup>3</sup>
Oil content	Maximum concentration 1 mg/m <sup>3</sup>
Pressure dew point	10 K below operating temperature
Supply pressure**	Standard design: 1.4 to 6 bar (20 to 90 psi) Marine version: 1.6 to 5.5 bar (23 to 80 psi)
Air consumption***	< 0.03 kg/h / 0.015 scfm

\* Free of oil, water and dust in accordance with DIN / ISO 8573-1. Pollution and oil content in accordance with Class 3

\*\* Do not exceed the maximum output pressure of the actuator

\*\*\* Independent of supply pressure

## 8 Commissioning

### Note

The electrical power supply and supply air pressure data indicated on the name plate must be complied with during commissioning.

### CAUTION

#### Risk of injury due to incorrect parameter values!

Incorrect parameter values can cause the valve to move unexpectedly. This can lead to process failures and result in injuries.

- Before recommissioning a positioner that was previously in use at another location, always reset the device to its factory settings.
- Never start automatic adjustment before restoring the factory settings!

### Note

Please observe the information in **Operation** on page 34 to operate the device!

Commissioning the positioner:

1. Open the pneumatic power supply.
2. Power-up the electric power supply and feed in the setpoint signal 4 to 20 mA.
3. Checking mechanical mounting:
  - Press **MODE** and hold; additionally press  $\uparrow$  or  $\downarrow$  until operating mode 1.3 (manual adjustment in the measuring range) is displayed. Release **MODE**.
  - Press  $\uparrow$  or  $\downarrow$  to move the actuator into the mechanical end position; check the end positions; rotational angle is displayed in degrees; for high-speed mode, press  $\uparrow$  or  $\downarrow$  simultaneously.

#### Recommended rotational angle range

Linear actuators	-20 to 20°
Rotary actuators	-57 to 57°
Minimum angle	25°

4. Perform standard automatic adjustment in accordance with **Standard automatic adjustment** on page 31.

Commissioning of the positioner is now complete, and the device is ready for operation.

## Operating modes

Selection from the operating level

1. Press and hold down **MODE**.
2. Also press and release  $\uparrow$  rapidly as often as required. The selected operating mode is displayed.
3. Release **MODE**.

The position is displayed in % or as a rotation angle.

Operating mode	Mode indicator	Position indicator
1.0 Control mode* with adaptation of the control parameters		
1.1 Control mode* without adaptation of the control parameters		
1.2 Manual adjustment** in the operating range. Adjust*** using $\uparrow$ or $\downarrow$		
1.3 Manual adjustment** in the measuring range. Adjust*** using $\uparrow$ or $\downarrow$		

\* Since self-optimization in operating mode 1.0 is subject to several factors during control operation with adaptation, incorrect adjustments could appear over an extended period.

\*\* Positioning not active.

\*\*\* For high-speed mode, press  $\uparrow$  and  $\downarrow$  simultaneously.

## Standard automatic adjustment

### Note

Standard Auto Adjust does not always result in optimum control conditions.

### Standard automatic adjustment for linear actuators\*

1. MODE Press and hold until ADJ\_LIN is displayed.
2. MODE Press and hold until the countdown ends.
3. Release MODE; this starts Autoadjust.

### Standard automatic adjustment for rotary actuators\*

1. ENTER Press and hold until ADJ\_ROT is displayed.
2. ENTER Press and hold until the countdown ends.
3. Release ENTER; this starts Autoadjust.

If Autoadjust is successful, the parameters will be stored automatically and the positioner will revert to operating mode 1.1.

If an error occurs during Autoadjust, the process will be terminated with an error message.

Perform the following steps if an error occurs:

1. Press and hold down operating button  $\uparrow$  or  $\downarrow$  for approximately three seconds.

The unit will switch to the operating level, mode 1.3 (manual adjustment within the measuring range).

2. Check mechanical mounting in accordance with **Mechanical mounting** on page 15 and repeat the standard automatic adjustment.

\* The zero position is determined automatically and saved during standard automatic adjustment, counter-clockwise (CTCLOCKW) for linear actuators and clockwise (CLOCKW) for rotary actuators.

## Sample parameters

**'Change the zero position of the LCD display from clockwise (CLOCKW) to counter-clockwise limit stop (CTCLOCKW)'**

Initial situation: the positioner is in bus operation on the operating level.

1. Switching to the configuration level:
  - Press and hold down  $\uparrow$  and  $\downarrow$  simultaneously,
  - additionally quickly press and release **ENTER**,
  - Wait for the countdown to go from 3 to 0,
  - Release  $\uparrow$  and  $\downarrow$ .

The following is now shown in the display:



2. Switching to parameter group 3.\_:
  - Press and hold down **MODE** and **ENTER** simultaneously,
  - additionally quickly press and release  $\uparrow$  2x,

The following is now shown in the display:



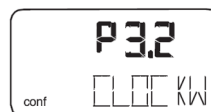
- Release **MODE** and **ENTER**.

The following is now shown in the display:



3. Selecting parameter 3.2:
  - Press and hold down **MODE**,
  - additionally quickly press and release  $\uparrow$  2x,

The following is now shown in the display:



— Release **MODE**.

## ... 8 Commissioning

### ... Sample parameters

4. Changing parameter settings:
  - Quickly press and release **↑** to select **CTCLOCKW**.
5. Switching to parameter 3.3 (Return to operating level) and saving the new settings:
  - Press and hold down **MODE**,
  - additionally quickly press and release **↑** 2×,

The following is now shown in the display:



- Release **MODE**,
  - Quickly press and release **↑** to select **NV\_SAVE**,
  - Press **ENTER** and hold down until the countdown goes from 3 to 0.
- The new parameter setting is saved and the positioner automatically returns to the operating level. It continues in the operating mode that was active prior to the configuration level being called up.

### Setting the option modules

#### Setting the mechanical position indication


1. Loosen the screws for the housing cover and remove it.
2. Rotate the position indicator on the shaft to the desired position.
3. Attach the housing cover and screw it onto the housing. Tighten the screws so that they are hand-tight.
4. Attach the symbol label to mark the minimum and maximum valve positions on the housing cover.

**Note**

The labels are located on the inside of the housing cover.

#### Setup of the feedback on the actuator position using proximity switches

1. Loosen the screws for the housing cover and remove it.


**CAUTION**

**Risk of injury!**

The device includes slot sensors with sharp edges.

- Adjust the metal tags using a screwdriver only!

2. Set the upper and lower switching points for binary feedback as follows:
  - Select the ‘Manual Adjustment’ operating mode and move the final control element by hand into the lower switching position.
  - Using a screwdriver, adjust the metal tag of proximity switch 1 (lower contact) on the axis until contact is made, i. e. just before it is inserted in the proximity switch. The metal tag enters proximity switch 1 when the axis is rotated clockwise (as viewed from the front).
  - Move the final control element by hand into the upper switching position.
  - Using a screwdriver, adjust the metal tag of proximity switch 2 (upper contact) on the axis until contact is made, i. e. just before it is inserted in the proximity switch. The metal tag enters proximity switch 2 when the axis is rotated counter-clockwise (as viewed from the front).
3. Attach the housing cover and screw it onto the housing.
4. Tighten the screws so that they are hand-tight.




**Setup of the feedback on the actuator position using microswitches**

1. Loosen the screws for the housing cover and remove it.
2. Select the 'Manual Adjustment' operating mode and move the final control element by hand into the desired switching position for contact 1.
3. Set maximum contact (①, lower washer).  
Fasten the upper washer with the special adjustment retainer and rotate the lower washer manually.
4. Select the 'Manual Adjustment' operating mode and move the final control element by hand into the desired switching position for contact 2.
5. Set minimum contact (②, upper washer);  
Fasten the lower washer with the special adjustment retainer and rotate the upper washer manually.
6. Connect the microswitch.
7. Attach the housing cover and screw it on to the housing.
8. Tighten the screws so that they are hand-tight.

## 9 Operation

### Safety instructions



**CAUTION**

**Risk of injury due to incorrect parameter values!**

Incorrect parameter values can cause the valve to move unexpectedly. This can lead to process failures and result in injuries.

- Before recommissioning a positioner that was previously in use at another location, always reset the device to its factory settings.
- Never start automatic adjustment before restoring the factory settings!

If there is a chance that safe operation is no longer possible, take the device out of operation and secure it against unintended startup.

### Parameterization of the device

The LCD display features operating buttons which enable the device to be operated with the housing cover open.

#### Menu navigation

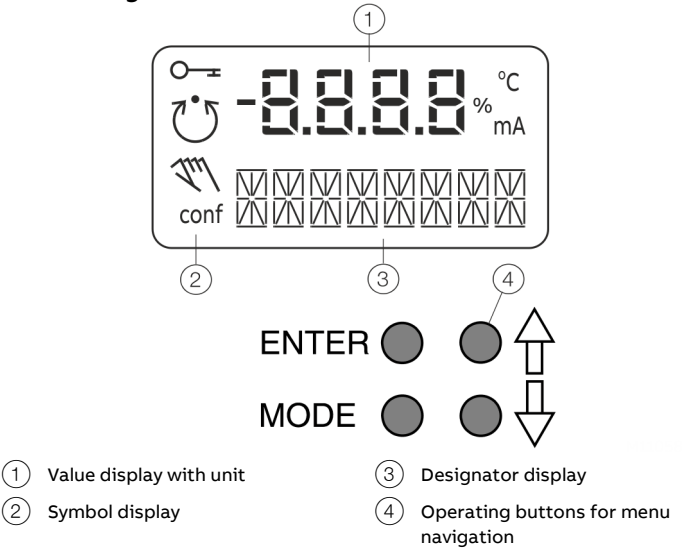


Figure 22: LCD display with operating buttons




#### Value display with unit

This 7-segment display with four digits indicates parameter values or parameter reference numbers. For values, the physical unit (°C, %, mA) is also displayed.

#### Designator display

This 14-segment display with eight digits indicates the designators of the parameters with their status, of the parameter groups, and of the operating modes.

#### Description of symbols

Symbol	Description
	Operation or access is restricted.
	Control loop is active. The symbol is displayed when the positioner is in operating mode 1.0 CTRL_ADP (adaptive control) or 1.1 CTRL_FIX (fixed control) at operating level. On the configuration level there are test functions for which the controller will be active as well. The control loop symbol will also be displayed when these functions are active.
	Manual adjustment. The symbol is displayed when the positioner is in operating mode 1.2 MANUAL (manual adjustment within the stroke range) or 1.3 MAN_SENS (manual adjustment within the measuring range) at operating level. At configuration level, manual adjustment is active when setting the valve range limits (parameter group 6 MIN_VR (min. of valve range) and 6 MAX_VR (max. of valve range)). The symbol will also be displayed when these parameters are being set.
conf	The configuration icon indicates that the positioner is at the configuration level. The control operation is inactive.

The four operating buttons **ENTER**, **MODE**, **↑** and **↓** are pressed individually or in certain combinations according to the function desired.

#### Operating button functions

Control button	Meaning
ENTER	<ul style="list-style-type: none"><li>• Acknowledge message</li><li>• Start an action</li><li>• Save in the non-volatile memory</li></ul>
MODE	<ul style="list-style-type: none"><li>• Choose operating mode (operating level)</li><li>• Select parameter group or parameter (configuration level)</li></ul>
↑	UP direction button
↓	DOWN direction button
Press and hold all four buttons for 5 s	Reset

## Menu levels

The positioner has two operating levels.

### Operating level

On the operating level the positioner operates in one of four possible operating modes (two for automatic control and two for manual mode). Parameters cannot be changed or saved on this level.

### Configuration level

On this level most of the parameters of the positioner can be changed locally. The PC is required to change the limit values for the movement counter, the travel counter, and the user-defined characteristic curve.

On the configuration level the active operating mode is deactivated. The I/P module is in neutral position. The control operation is inactive.

## NOTICE

### Property damage

During external configuration via a PC, the positioner no longer responds to the set point current. This may lead to process failures.

- Before any external parameterization, always move the actuator to the safety position and activate manual adjustment.

### Note

For detailed information on how to parameterize device, consult the associated operating instructions and/or configuration and parameterization instructions.

## 10 Maintenance

The positioner does not require any maintenance if it is used as intended under normal operating conditions.

### Note

Manipulation by users shall immediately render the warranty for the device invalid.

To ensure fault-free operation, it is essential that the device is supplied with instrument air that is free of oil, water, and dust.

## 11 Recycling and disposal

### Note



Products that are marked with the adjacent symbol may **not** be disposed of as unsorted municipal waste (domestic waste).

They should be disposed of through separate collection of electric and electronic devices.

This product and its packaging are manufactured from materials that can be recycled by specialist recycling companies.

Bear the following points in mind when disposing of them:

- As of 8/15/2018, this product will be under the open scope of the WEEE Directive 2012/19/EU and relevant national laws (for example, ElektroG - Electrical Equipment Act - in Germany).
- The product must be supplied to a specialist recycling company. Do not use municipal waste collection points. These may be used for privately used products only in accordance with WEEE Directive 2012/19/EU.
- If there is no possibility to dispose of the old equipment properly, our Service can take care of its pick-up and disposal for a fee.

## 12 Additional documents

### Note

All documentation, declarations of conformity, approvals, certificates and additional documentation are available in the ABB download area.

[www.abb.com/positioners](http://www.abb.com/positioners)

## 13 Appendix

### Return form

#### Statement on the contamination of devices and components

Repair and/or maintenance work will only be performed on devices and components if a statement form has been completed and submitted.

Otherwise, the device/component returned may be rejected. This statement form may only be completed and signed by authorized specialist personnel employed by the operator.

#### Customer details:

Company:

Address:

Contact person:

Telephone:

Fax:

Email:

#### Device details:

Type:

Serial no.:

Reason for the return/description of the defect:

#### Was this device used in conjunction with substances which pose a threat or risk to health?

☐ Yes ☐ No

If yes, which type of contamination (please place an X next to the applicable items):

☐ biological

☐ corrosive / irritating

☐ combustible (highly / extremely combustible)

☐ toxic

☐ explosive

☐ other toxic substances

☐ radioactive

Which substances have come into contact with the device?

1.

2.

3.

We hereby state that the devices/components shipped have been cleaned and are free from any dangerous or poisonous substances.

Town/city, date

Signature and company stamp

## Trademarks

HART is a registered trademark of FieldComm Group, Austin, Texas, USA

## Notes

---

## ABB Measurement & Analytics

For your local ABB contact, visit:  
**[www.abb.com/contacts](http://www.abb.com/contacts)**

For more product information, visit:  
**[www.abb.com/positioners](http://www.abb.com/positioners)**

---

We reserve the right to make technical changes or modify the contents of this document without prior notice. With regard to purchase orders, the agreed particulars shall prevail.  
ABB does not accept any responsibility whatsoever for potential errors or possible lack of information in this document.

We reserve all rights in this document and in the subject matter and illustrations contained therein. Any reproduction, disclosure to third parties or utilization of its contents – in whole or in parts – is forbidden without prior written consent of ABB.