

Product: **Room Controller, 8-fold, SM**

Type: **RC/A 8.1**

Current application program: **Room Controller modular 8f/2.1**

=====

Software Information	to:	Room Controller modular 8f/2.1
	from:	12/2010

**1. Important information**

**Devices with production date from week 31/2005 have to be programmed with the most recent application program.**

**2. Error correction  
overtemperature monitoring**

The regarding communication object could signal an internal overtemperature of the device although no overtemperature existed.  
This error was corrected by version 2.1.

=====

Software Information	to:	Room Controller modular 8f/2.0b
	from:	12/2009

**1. Error correction „Shutter  
Actuator Module“**

Few Room Controller Devices delivered in November and December 2009 will go out of operation immediately after plugging in a Shutter Actuator Module JA/M. The error is caused by a factory-provided incomplete device firmware.

The version /2.0b will reload the missing firmware parts.

Please do the following steps:

1. Import the latest application program "Room Controller modular 8f/2.0b" into the ETS.
  2. Insert a new device into the project. This step only necessary to activate the new firmware in the ETS. Afterwards you may delete this device.
  3. Disconnect the Room-Controller from the mains voltage and remove the Shutter Actuator Modules. Reconnect the mains voltage.
  4. Program the Room Controller using the ETS. The new firmware will then be downloaded into the device.
  5. Repeat steps 3 and 4 for all other Room Controllers RC/A 8.1.
- =====

Software Information	to:	Room Controller modular 8f /2.0a
	from:	10/2009

1. Error correction: object  
"Module allocation request"

It was not possible to assign a group address to this communication object using the ETS. This error concerns only the version /2.0. It is solved in version /2.0a.

Anyhow, it is possible to assign a group address within the plug-in, see button "Link".

For updating an existing ETS project, please import the version /2.0a and add a new product with this version into the project. Now convert the device with the version /2.0 to the new version /2.0a, see button "Convert".

2. Error correction: flag "Grp"

The program flag "Grp" in the ETS was not set correctly. The flag indicates, whether the group addresses of the device are synchronized with the ETS. The error is solved in version /2.0a.

---

Software Information

to: Room Controller modular 8f/2.0

from: 08/2009

1. New module types

This version supports the following module types:

- SA/M 1.16.1 Switch Actuator Module, 2-fold, 16 A, floating contacts
- SD/M 2.6.2 Switch/Dim Actuator Module, 2-fold, 6 AX
- LR/M 1.6.2 Light Controller Module, 1-fold, 6 AX

---

Software Information

to: Room Controller modular 8f/1.7

from: 07/2009

1. Change of objects "Module  
allocation request" and  
"Status module allocation"

Due to a request of the KNX Association, the function of the communication objects "Module allocation request" and "Status module allocation" has been changed.

The object "Status module allocation" does not further show the name of the module in the according module slot. Instead, the object sends a code of 8 letters which show the module type plugged into the according slot (see product manual).

For this reason, the communication object "Module allocation request" was changed from 1 byte to 1 bit.

---

Software Information

to: Room Controller modular/1.6

from: 06/2006

## 1. Shutter Actuator Modules

The lower limit of the total travel time was reduced to 1 second.

---

Software Information

to: Room Controller modular/1.5

from: 05/2006

## 1. Important information

**This Version may cause an error after a full download, so that the device can not be programmed via the bus any further. A full download is carried out, if the device is loaded with an older program version.**

**If the device can not be programmed, please take the following measures:**

- **Disconnect the voltage from the device**
- **Keep the programming button pressed while applying the voltage to the device (by switching on the circuit breaker)**
- **Unload the device using the ETS**
- **Program the device with the most recent application program (V1.6 or higher)**

## 2. Important information

**Devices with production date from week 31/2005 have to be programmed with the most recent application program.**

## 3. Corrected errors

The error of ETS3 according to application program /1.3a Point 2 was corrected by changing the application program. Thus also without patch ETS3 V1.0d the device will work correctly.

## 4. Note about the version

Version step /1.4 was skipped for internal reasons.

---

Software Information

to: Room Controller modular/1.3a

from: 01/2006

## 1. Important information

**Devices with production date from week 31/2005 have to be programmed with the most recent application program (.../1.3 or higher).**

## 2. Important information

**Please use the latest patch of ETS3 (V1.0d or higher). Otherwise a malfunction of the device may occur after the programming.**

**ETS2 is not concerned.**

## 3. Conversion of old software versions (ETS3 only)

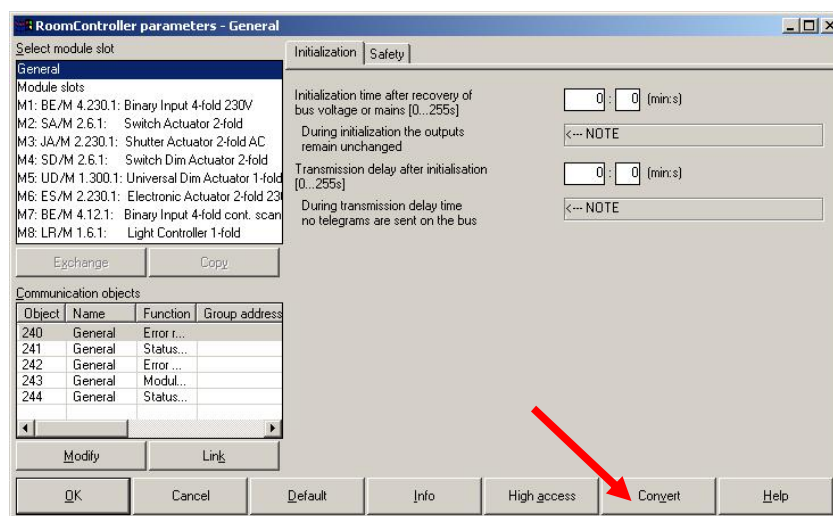
From Version /1.3 it will be possible to transfer parameters and group addresses from older software versions.

**Important: This function is only available for ETS3 with Service Release C or higher!**

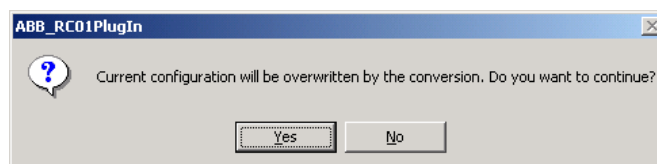
**Important: Older versions of the conversion tool could abort. Please use the latest version (.../1.3a or higher) of the application program.**

For the conversion please do the following steps:

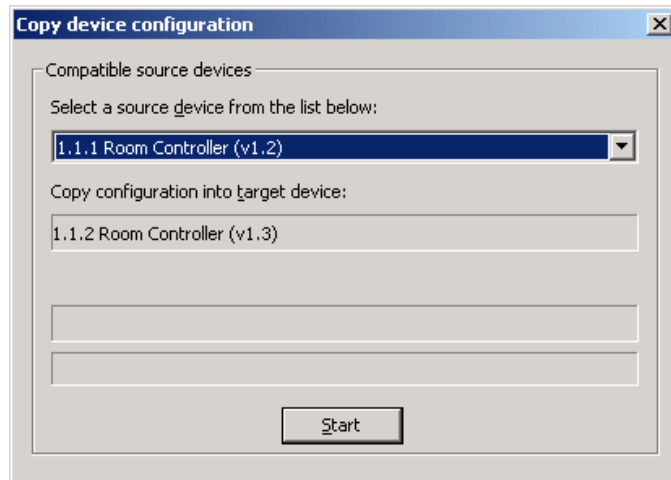
- Import the latest application program “Room-Controller modular, 8f/1.3” into the ETS3
- Insert a new device into the project
- Select the new device and call “Edit Parameters”



→ press the button “Convert”



→ click on „yes“



- Here all existing Room Controller devices with an older software version are listed. Select the device for the conversion.
- After the conversion („Start“) the new Room controller device contains all the information of the selected device. The old device can now be removed from the project.

4. Universal Dim Aktuator Module  
UD/M 1.300.1

The transition time of the 8-bit-lightscene no. 2 will be corrected.