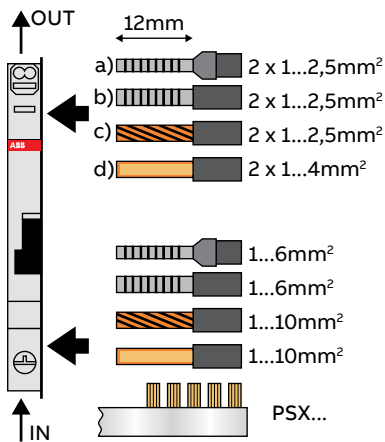
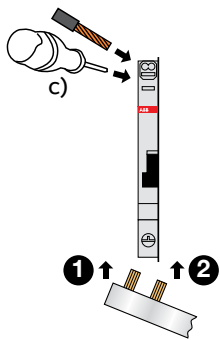


Instruction for use of FlexLine®



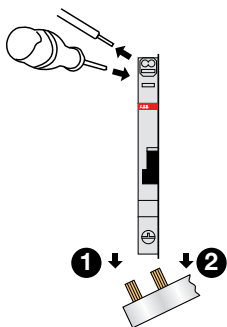
Distribution boards with metal cover

The distance from a metallic cover to the “shoulder” of the miniature circuit breaker must be at least 6 mm on the load side due to the arrangement of the easily accessible measurement point.



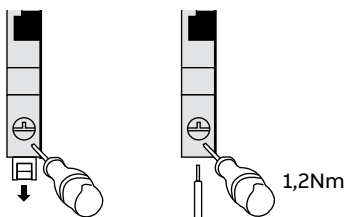
Push in of cables and busbar assembly

- The top screwless terminal is composed of two separate and parallel terminals. Each terminal opening can be connected with one rigid or flexible cable.
- Rigid and flexible cables with end sleeves may be directly connected.
- If flexible cables without end sleeves (c) are to be connected, the terminal must be opened with a screwdriver by pushing in the cover part. Splicing of the wires must be avoided.
- The cable must be inserted into the terminal either as far as possible or in such a way that a sufficient connection is obvious.
- The tightness of the connection must be checked.
- It is recommended to push the busbar inside the screwless terminals, starting from one side to the other side.



Cable removal and busbar disassembly

- The cables may only be removed after operating the terminal's opening mechanism.
- If one cable is removed, the correct position of the remaining cable must be checked



Feed in via cable on bottom terminal

- FlexLine® devices can be supplied either via PSX busbar or via cable. In case of cable feed-in the plastic part covering the screw needs to be removed.
- Nominal torque is 1,2Nm