

ABB MOTION SERVICES

# ABB Ability™ Digital Powertrain

## What's new? PT17

See topics

Enhancements for rotating equipment .....	2
Additional operating parameters to MACHsense-R .....	2
On demand load measurement for generic machinery.....	2
Enhancements for drives.....	3
ACS8080 and 6080 drives onboarded with LAAAB loading package.....	3
Downloading measurements data .....	3

DOCUMENT ID	REV.	SECURITY LEVEL	DATE	LANG.	PAGE
9AKK108468A1337	A	External	14 <sup>th</sup> June 2023	EN	1/3
© Copyright 2023 ABB. All rights reserved.					

Note: In this document, ABB Ability™ Digital Powertrain portal will be referred as “Powertrain portal”.

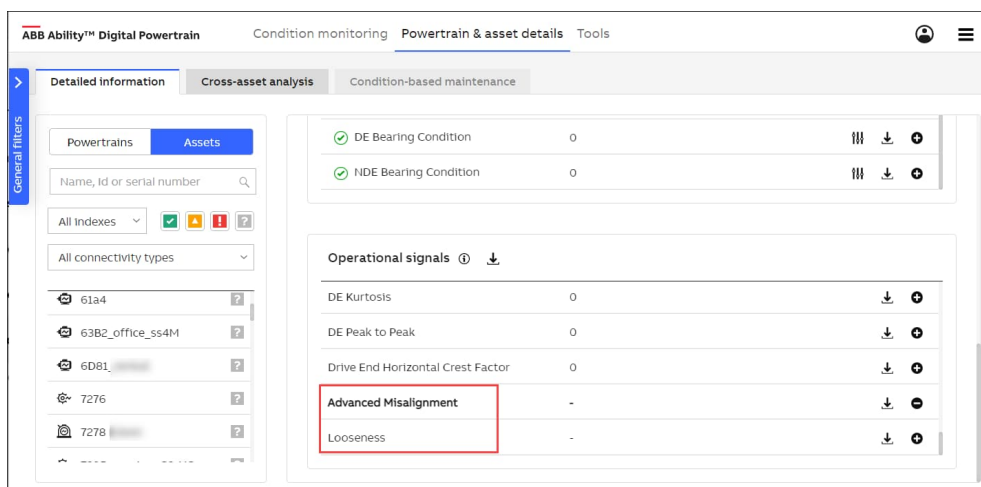
## Enhancements for rotating equipment

### Additional operating parameters to MACHsense-R

In Powertrain portal, the asset MACHsense-R includes following KPIs:

- Unbalance
- Advanced misalignment
- Looseness
- Broken rotor bar
- Advanced bearing condition

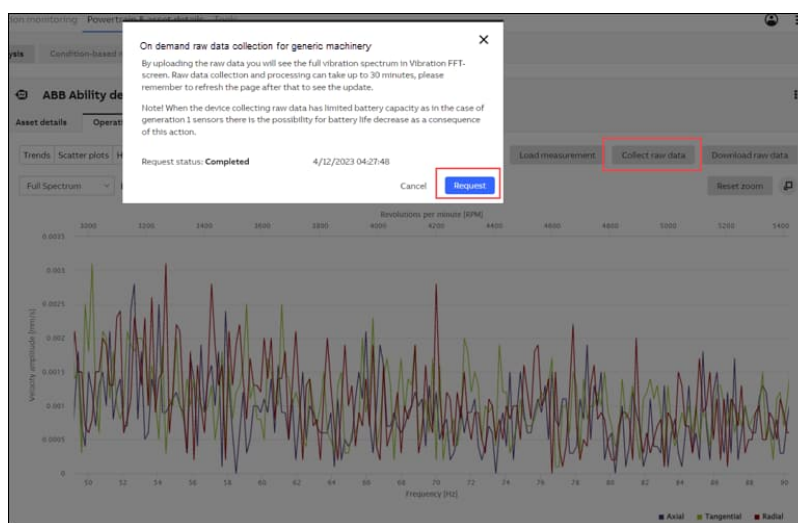
To view the KPIs, go to Powertrain & asset details → Detailed information → Assets → Operational signals.



### On demand load measurement for generic machinery

In Powertrain portal, under the Vibration FFT tab, you can trigger an on-demand request for raw data collection for the generic machinery monitored by sensor.

Go to Powertrain & asset details → Detailed information → Operational parameters → Vibration FFT and click Collect raw data. In the pop-up window, click Request to confirm the raw data collection.



DOCUMENT ID	REV.	SECURITY LEVEL	DATE	LANG.	PAGE
9AKK108468A1337	A	External	14 <sup>th</sup> June 2023	EN	2/3
© Copyright 2023 ABB. All rights reserved.					

## Enhancements for drives

### ACS8080 and 6080 drives onboarded with LAAAB loading package

In Powertrain portal, the drives ACS8080 and ACS6080 are onboarded with LAAAB loading package.

### Downloading measurements data

In Powertrain portal you can download the sensor measurements data and view the results in a worksheet.

Go to Powertrain & asset details → Detailed information → Assets → Sensor properties. Click on : → Download measurements. The system sends you an email notification with an attachment that contains the exported measurements.

The screenshot shows the ABB Ability™ Digital Powertrain portal interface. The main navigation bar includes 'Condition monitoring', 'Powertrain & asset details', and 'Tools'. The left sidebar shows 'General filters' with tabs for 'Powertrains' and 'Assets'. The 'Assets' tab is active, displaying a list of assets including '0319\_venkat0319\_venkat-1v', '1015', '20A7', '20AC', '20b7', '20b9', '20C1', '20C2', '20d', '20EA', and '2689 motor sp'. The '1015' asset is selected. The main content area shows the 'Sensor properties' tab for asset 1015. The 'Sensor details' section lists various attributes like Sensor identifier, Sensor type, Firmware version, Hardware revision, Subscription type, Subscription expiration date, and Bluetooth MAC. The 'Sensor features' section lists Remaining battery capacity, Measurement interval, Sensor to gateway RSSI value, and Battery mode. A dropdown menu is open, showing options: 'Alert, alarm and offset configuration', 'Download measurements', and 'Rename asset'. The 'Download measurements' option is highlighted with a red box.

**List of measurements sent by email** ✕

You will receive an email with the exported measurements. The operation may take around 10 minutes. Click "OK" to trigger the measurement collection and sending of the email.

Cancel OK

DOCUMENT ID	REV.	SECURITY LEVEL	DATE	LANG.	PAGE
9AKK108468A1337	A	External	14 <sup>th</sup> June 2023	EN	3/3
© Copyright 2023 ABB. All rights reserved.					