

03/2023

ABB BeTon mounting boxes

AUB60 and AUB60H for casting applications



AUB60 Mounting box



AUB60H Mounting box

New ABB BeTon mounting boxes are especially designed to meet the needs of current and future concrete casting applications and electrical installations. There are two versions available AUB60 and AUB60H with box heights 67 mm and 82 mm, respectively.

The new easy-to-use boxes improve efficiency in all process steps. The boxes have several ways to fix them into casting molds and optimal way can be found to all designs. The boxes are compatible with 20 and 25 mm piping, include adjustable installation ring and have large inside space for easy electrical installations.

Key features

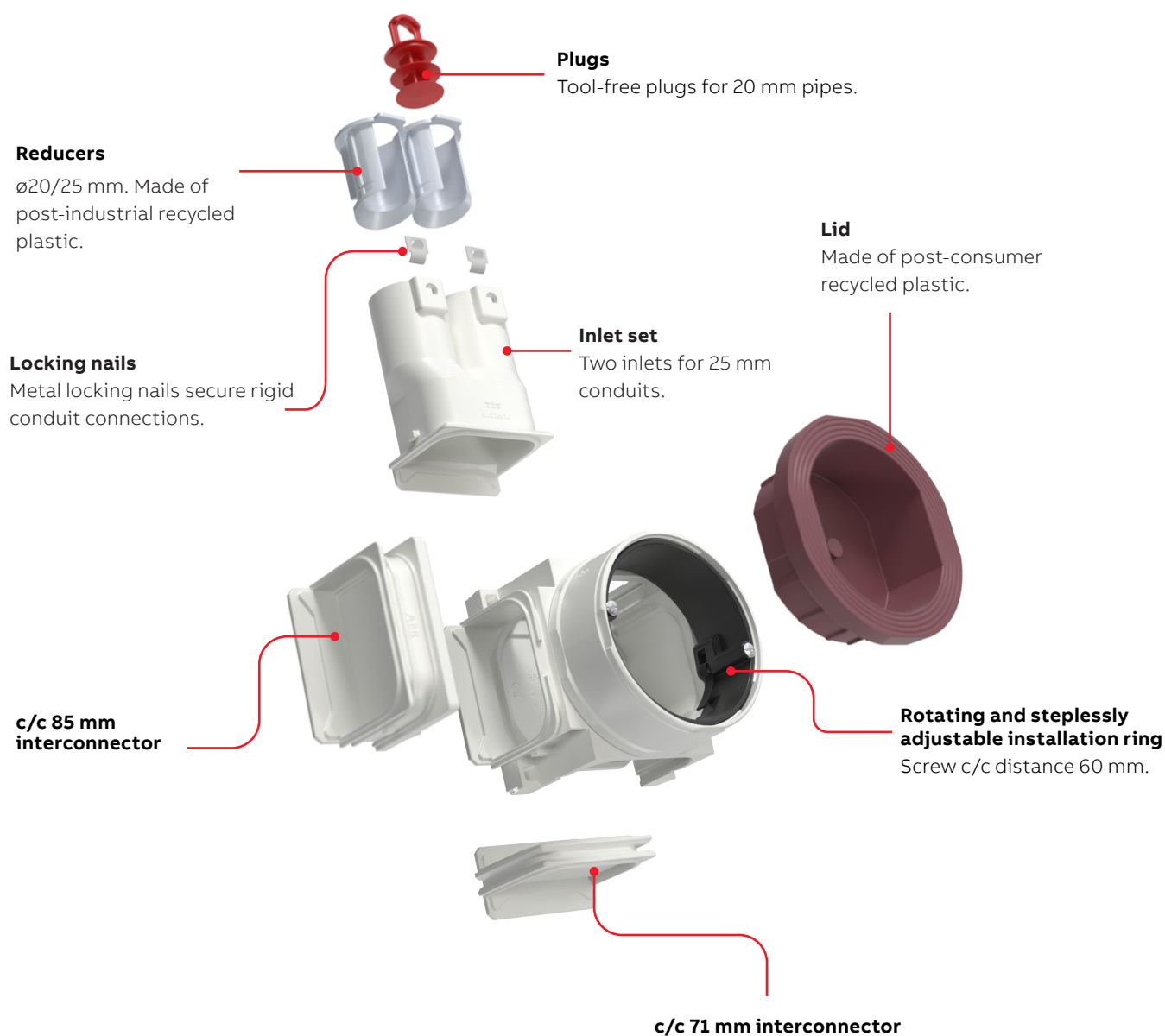
- Two 20/25mm inlets with locking nails.
- Additional inlets can be added to other directions (available as accessory).
- Rotating, steplessly adjustable installation ring. Ring can be tilted 0 – 4 °.
- Box combinations can be created without accessories (c/c 71 and 85 mm).
- Large inside space for easy electrical installation.
- Various ways of connecting the box to casting mold. Optimal attaching method to mold available for all situations.
- Made of halogen free material (IEC/61249-2-21).
- Fulfills the requirements of the glow wire test according to the standard IEC/EN60670: 2005 (650 °C).
- Compatible accessories:
 - ANN25.20 inlet set
 - ASN85 c/c 85 mm interconnector
 - AS25 installation plug
 - AS101 box support

Order information

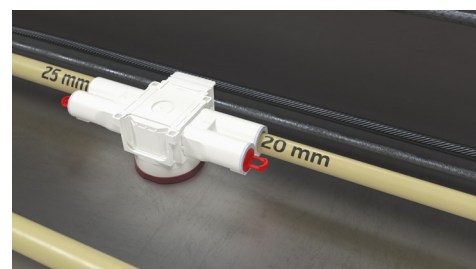
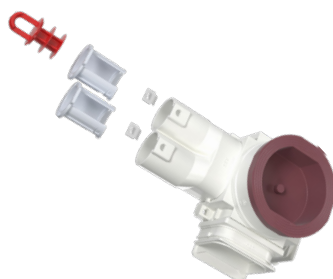
Type	Product ID	EAN	Description	Package
AUB60	2TKA00004663	6438199008851	Mounting box c/c 60 mm	50
AUB60H	2TKA00004657	6438199008844	Mounting box c/c 60 mm	42

ABB Oy
Porvoon Sisäkehä 2, PO Box 16
FI-06101 Porvoo, Finland
Phone: +358 10 22 11

Mounting box parts



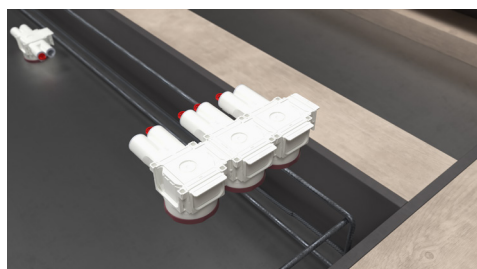
Features



Rotating, tilting and steplessly adjustable installation ring enables fast and easy fine tuning of the attachment screw positioning after casting. Installation ring can be tilted up to four degrees and the depth can be adjusted 0-15 mm.

Two in-built 25/20 mm inlets for conduit connections. Mounting box can be used with both 20 and 25 mm conduits without any accessories. Up to six inlets can be connected to box to different directions. Additional inlets are available as accessory. All inlets have locking nails for secure conduit connection.

One inlet is always open and one is sealed with tool-free plug that can be used to seal any 20 mm conduit.



CC71 and CC85 combinations can be created without accessories. Combinations can be created easily by just clicking the boxes together. Connections are very rigid, which helps with handling and makes sure combinations do not break down or start to leak during casting.

Very large inside space for easy electrical installation.

Also larger c/c distance combinations can be created. One ASN85 adds +15 mm to c/c distance.

Knock-outs can be removed with hammer.

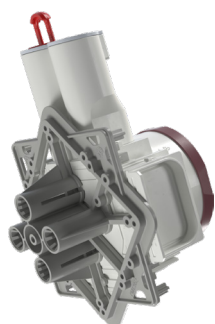
Several ways to attach the mounting box to casting mold



Lid has large compartment for magnet that can be used to attach the box to metal casting mold.



Lid has wide grooved surface to where glue can be applied and strong connection between box and casting mold can be created with glue.



Boxes are compatible with AS101 box support.

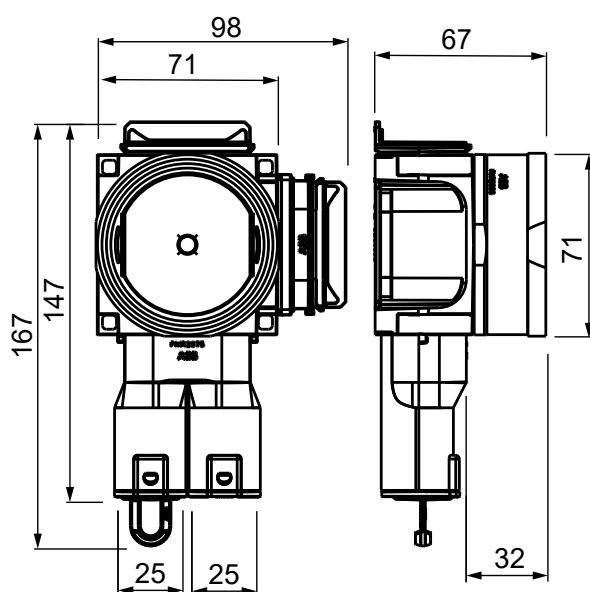


Boxes are compatible with AS25 installation plug.

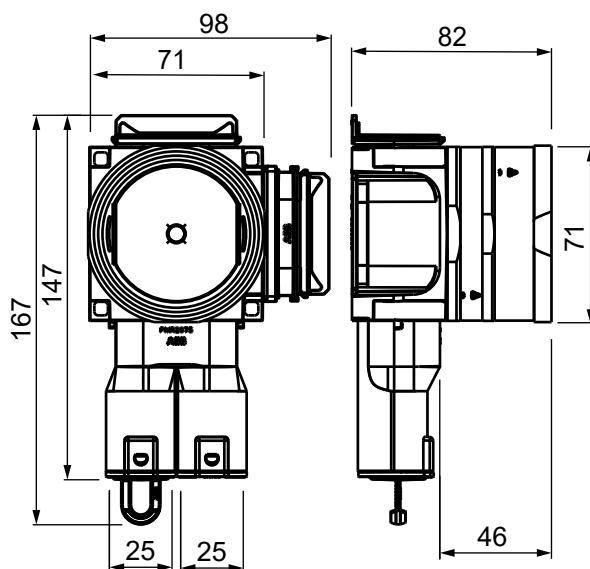


Nailing from the backside.

Dimensional drawings



AUB60 Mounting box



AUB60H Mounting box

Accessories for the mounting boxes



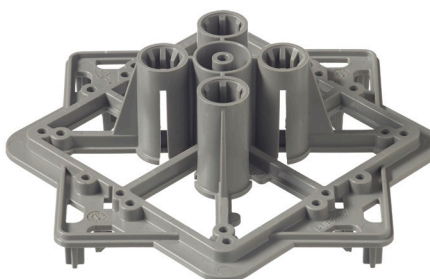
ANN25.20 Inlet set 2 x 25/20 mm



ASN85 Interconnector c/c 85 mm



AS25 Installation plug for mounting/junction boxes



AS101 Box support for concrete elements

Order information

Type	Product ID	EAN	Description	Package
ANN25.20	2TKA00004642	6438199008820	Inlet set 2 x 25/20 mm	80
ASN85	2TKA00004672	6438199008875	Interconnector c/c 85 mm	100
AS25	2TKA130010G1	6418677329876	Installation plug for mounting/junction boxes	10/100
AS101	2TKA00004251	6438199008257	Box support for concrete elements	60