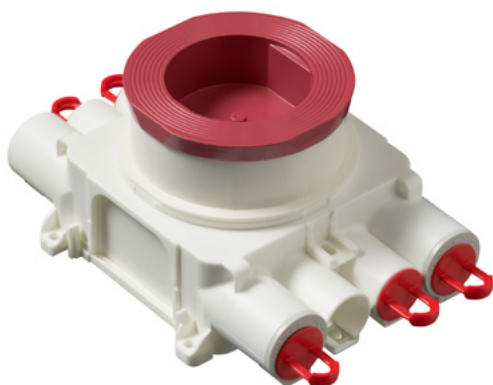


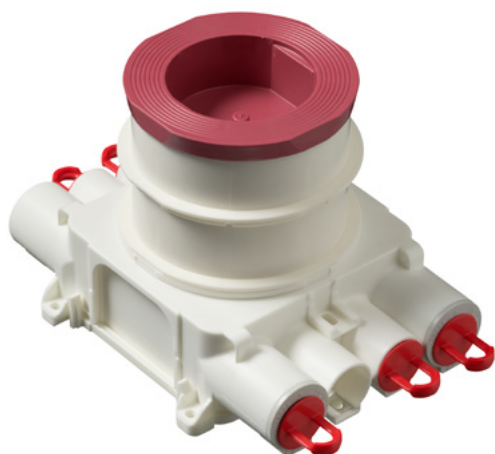
01/2023

ABB System BeTon junction boxes

AUB67 and AUB67H for casting applications



AUB67 Junction box



AUB67H Junction box

New ABB System BeTon junction boxes are especially designed to meet the needs of current and future concrete casting applications and electrical installations. There are two versions available AUB67 and AUB67H with box heights 80 mm and 112 mm, respectively.

The new easy-to-use boxes improve efficiency in all process steps. The boxes have several ways to fix them into casting molds and optimal way can be found to all designs. The boxes are compatible with 20 and 25 mm piping, include adjustable installation ring and have large inside space for easy electrical installations.

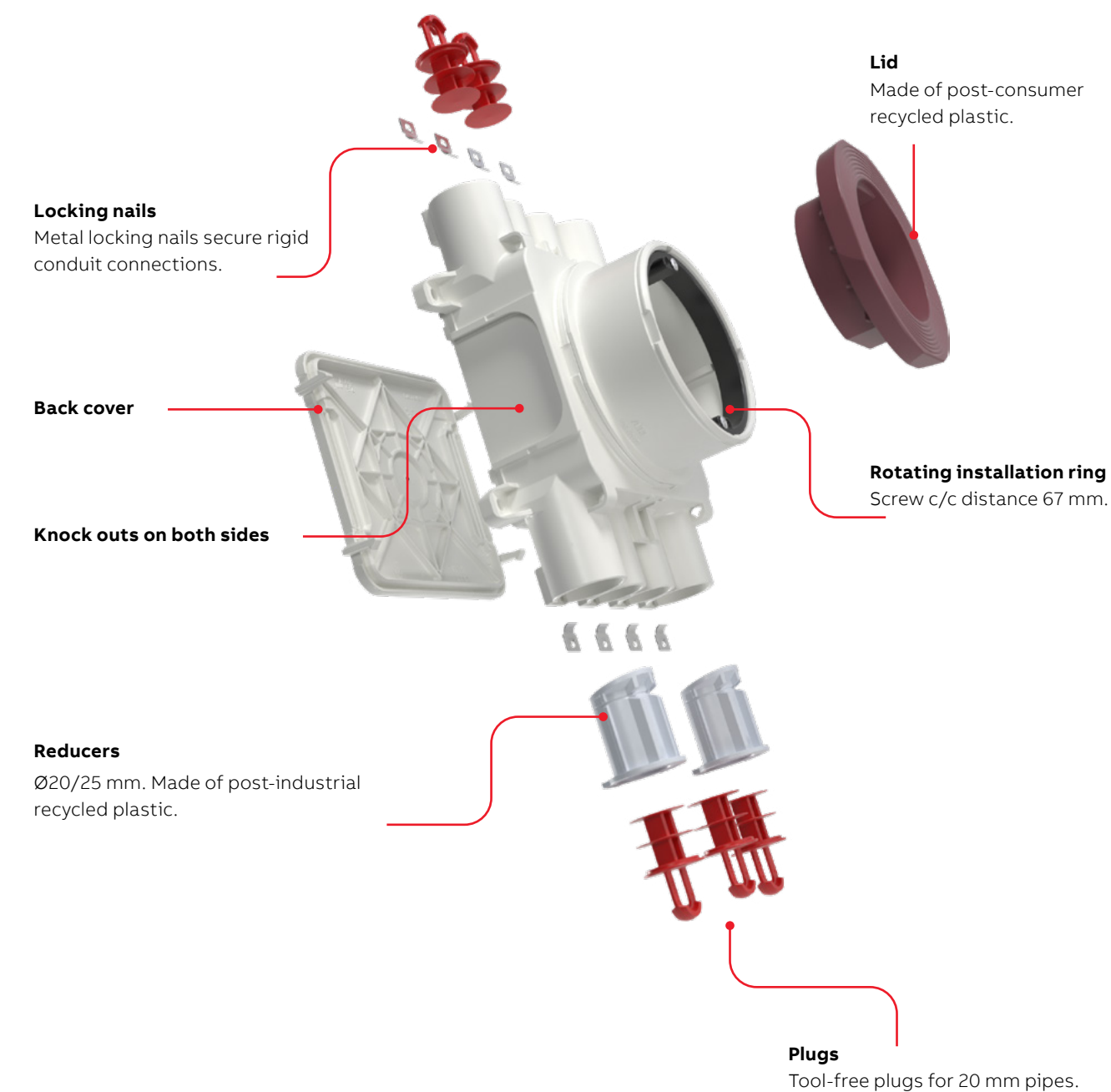
Key features

- Screw c/c distance 67 mm
- Compatible with 20 mm and 25 mm piping. Boxes have several fixed inlets with locking nails.
- Rotating installation ring
- Large inside space for easy electrical installation
- Various ways of connecting the box to casting mold. Optimal attaching method to mold available for all situations.
- Made of halogen free material (IEC/61249-2-21)
- Fulfills the requirements of the glow wire test according to the standard IEC/EN60670: 2005 (650 °C).
- Compatible accessories:
 - ANN25.20 inlet set
 - AS25 installation plug
 - AS101 box support

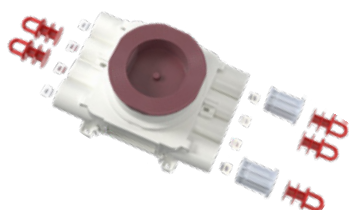
Order information

Type	Product ID	EAN	Description	Package
AUB67	2TKA00004671	6438199008868	Junction box c/c 67 mm	36
AUB67H	2TKA00004648	6438199008837	Junction box c/c 67 mm	24

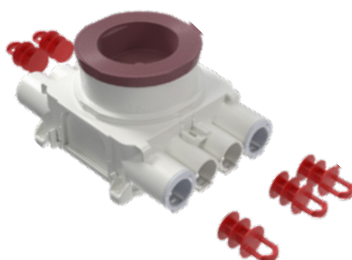
Junction box parts



Features



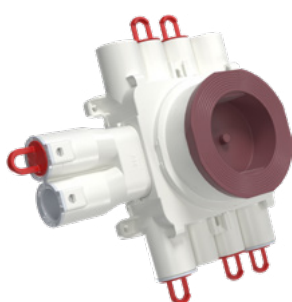
Four pieces of 20 mm and four pieces of 25 mm (two has 20 mm reducer) in-built fixed inlets with locking nails for rigid conduit connections. Compatible with both 20 mm and 25 mm conduit systems without the need of any accessories.



Possibility to have four 20 mm conduits to same direction without any accessories. Tool-free plugs and reducers can be removed and re-installed without damaging the locking nails. Plugs can be used also to seal 20 mm pipes before casting.



Very large inside space for easy electrical installation.



Additional inlets can be attached to both sides.



Rotating installation ring enables fast and easy fine tuning of the attachment screw positioning after casting.

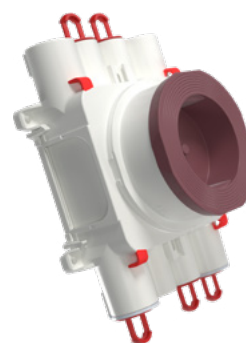
Several ways to attach the junction box to casting mold



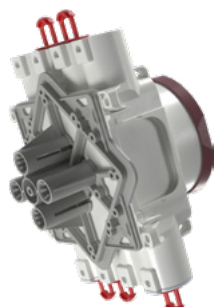
Lid has large compartment for magnet that can be used to attach the box to metal casting mold.



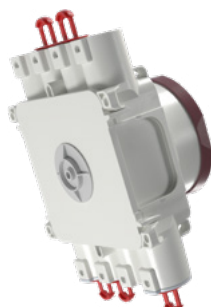
Lid has wide grooved surface to where glue can be applied and strong connection between box and casting mold can be created with glue.



Box has integrated horizontal channels, which can be used to connect the box to rebars.



Boxes are compatible with AS101 box support.

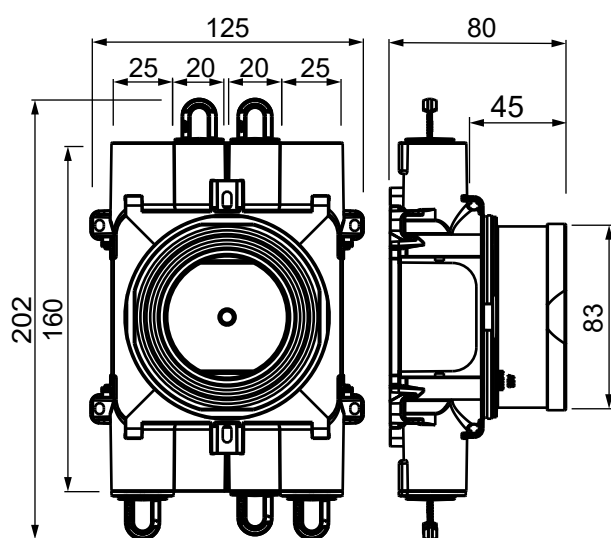


Boxes are compatible with AS25 installation plug.

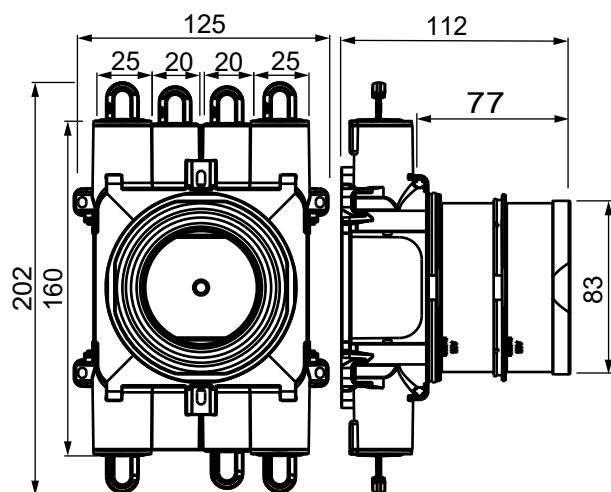


Nailing from the backside.

Dimensional drawings



AUB67 Junction box



AUB67H Junction box

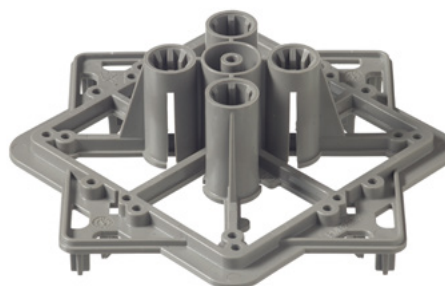
Accessories for the junction boxes



ANN25.20 Inlet set 2 x 25/20 mm



AS25 Installation plug for mounting/junction boxes



AS101 Box support for concrete elements

Order information

Type	Product ID	EAN	Description	Package
ANN25.20	2TKA00004642	6438199008820	Inlet set 2 x 25/20 mm	80
AS25	2TKA130010G1	6418677329876	Installation plug for mounting/junction boxes	10/100
AS101	2TKA00004251	6438199008257	Box support for concrete elements	60