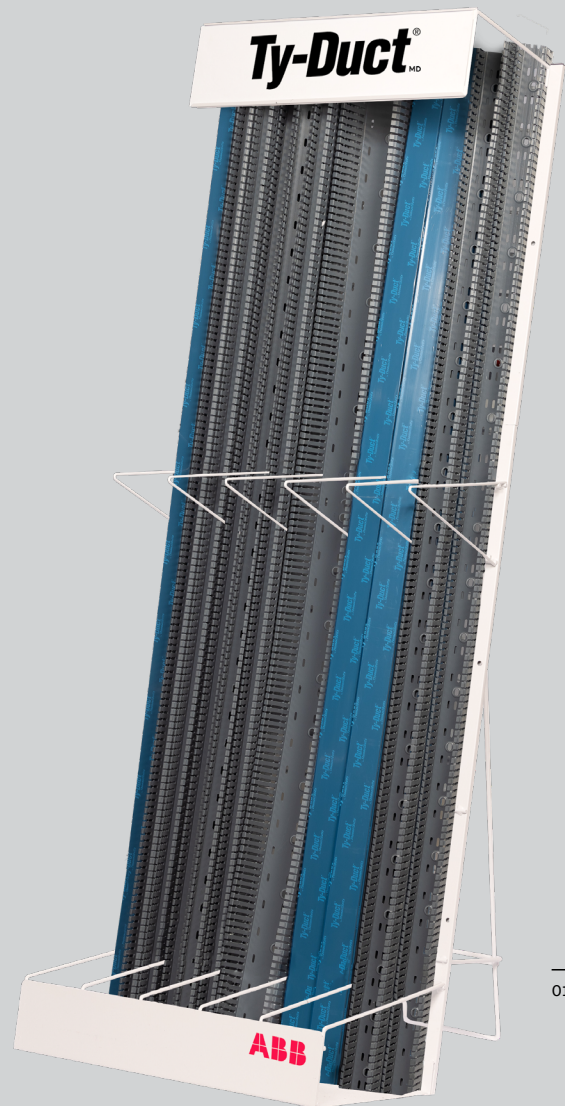
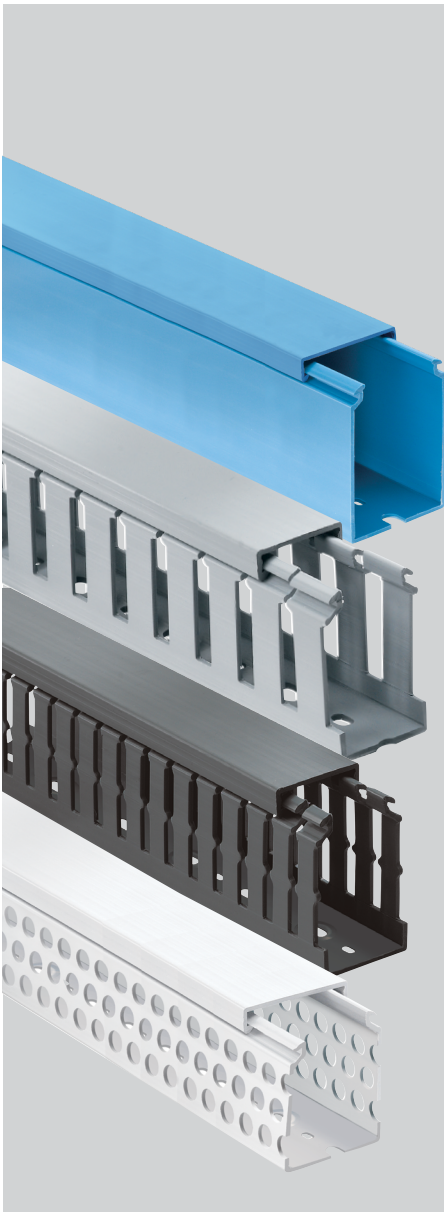


TY-DUCT®

Wiring duct



—
01

—
01 Dimensions
Frame: 24" wide x 73" H x 16.375" deep at the base
Header: 24" x 7"



1. Great solution for routing and concealing wiring
2. Versatile configurations - wire management solution

Plan-O-Gram Display unit

Can be used as a stand-alone unit or fastened to the Quick-Pop display



When ordering:

Refer to Ty-Duct catalogue when ordering the ducts and covers your distributor branch requires.



Click or scan over QR code

For any series of Ty-Duct widths of 3" and 4", ducts must be placed in one compartment and the covers in another. For smaller widths, the ducts and covers can be in the same compartment.

Divider walls can be placed in a single compartment. See page D26 of catalogue.



Click or scan over QR code

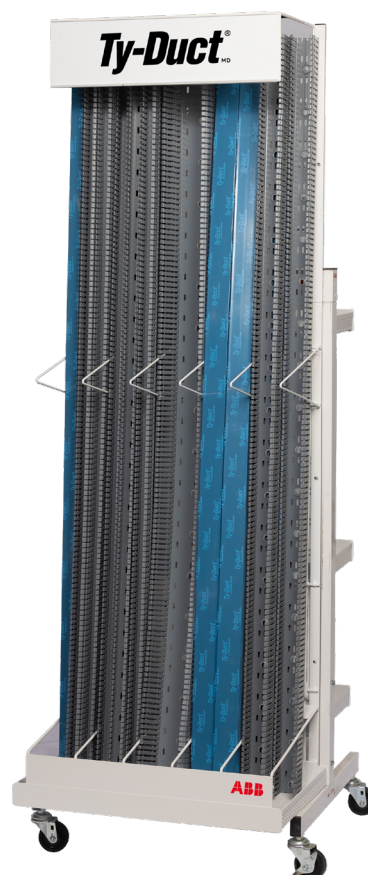


ABB reps will need to collaborate with branch managers to see how many of each model can be placed in each compartment since there are several possible heights.

For example, the 4" wide ducts can be ordered in heights of 1.5", 2", 3", 4" and 5".

The POP, Quick-POP, 26 in. wide, 16 in. deep shelf (JDU-QPW26DEEP) must be ordered with the Ty-Duct display if fastened to the Quick-Pop.



Click or scan over QR code

