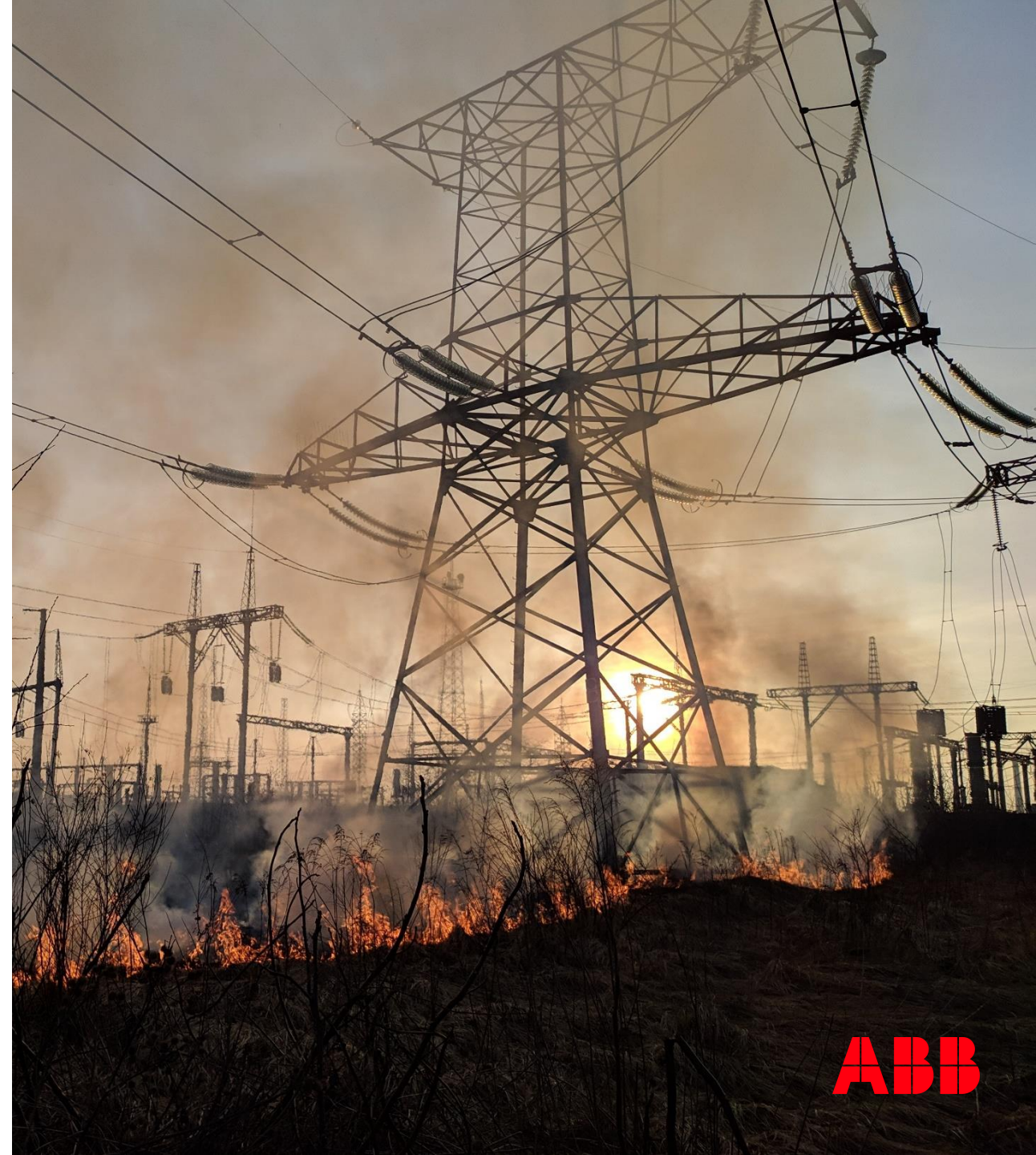

Wildfire Mitigation

Portfolio and Solutions

Let's start the conversation!

Contact your ABB Utility Sales Representative for more details



No one wants to be the cause of a wildfire

Each year, devastating wildfires in the U.S. and Canada burn millions of acres, causing billions of dollars in property damage as well as injury and loss of life

In the US, 58,733 wildfires burned more than 7.13 million acres in 2021¹



Learn More

Wildfire Mitigation Portfolio and Solutions



Hi-Tech Valiant™ Fuse
full-range current-limiting fuse



GridShield®
recloser



Relion® Protection
and Control Relays



Homac® Underground
and Blackburn® Overhead
Cable Accessories



Homac Flood-Seal® Aluminum
multi-port connectors



Elastimold™ switchgear



RSS-1 submersible
current sensor



VIL submersible
medium voltage VTs-

Protect what matters most

Hi-Tech Valiant™ Fuse full-range current limiting fuse

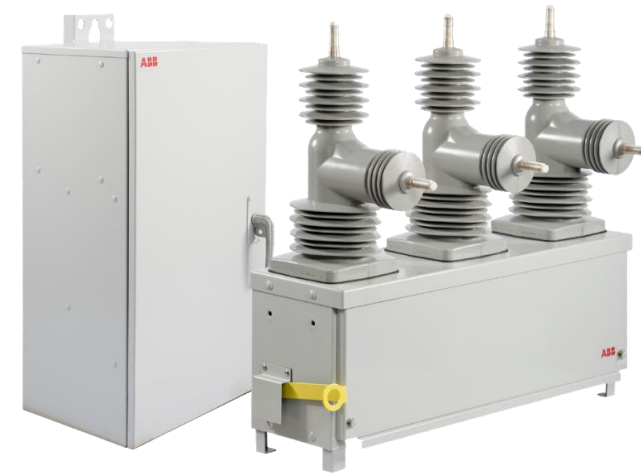
- Meets exemption requirements listed in the California Code of Regulations, Title 14, Section 1255 (10)
- 100% leak tested
- Damage sensor included as standard
- Unique, patent-pending engagement pin for easy vertical and rotational alignment during installation
- Actuating pin remains external to the fuse after operation – designed to eliminate the possibility of reclosure



Fault detection in difficult situations

GridShield® recloser

- Highest creep distance on the market today helps ensure long-term performance in any environment
- ABB made vacuum interrupters, current and voltage sensors and magnetic actuators included in any ABB GridShield® recloser
- Vacuum interruption helps eliminate open arcing or sparks
- Rated at up to 38 kV, with unique 16 kA solid dielectric
- High-impedance fault detection designed to be effective even in most difficult situations
- Site-ready units to facilitate quick and seamless installation and minimized time on site



Detection of ground faults

Relion® Protection and Control Relays

Product Features

- Functional scalability and extensive possibilities to easily tailor configurations to application-specific requirements
- Offering
 - Sensitive ground fault detection
 - High impedance fault detection for grounded and ungrounded networks
 - Multifrequency-admittance based ground fault detection for compensated networks
 - Petersen coil controller
- REF615
- REF620
- RER620
- REX640



Connection fit for your needs

Blackburn® Overhead Cable Accessories

- Overhead connection suitable for aluminum or copper conductors
- Designs able to cover wide range of conductor sizes in both compression and bolted connections
- Designed for reliable performance in the harshest of environments
- Copper H-Tap Connectors
- Type IPC- Talon Insulation Piercing Connectors
- PAE Parallel-Extruded Type Groove Clamps
- PowerTap™ Wedges
- PAA One- and Two-Bolt Aluminum Parallel-Groove Connectors
- Storm-Safe® Service Entrance Disconnects



Pictured: Storm-Safe®
Service Entrance Disconnects

ABB is here to support your undergrounding effort

Homac® Underground Accessories

- Homac Flood-Seal® underground connections designed to provide waterproof connections to help ensure safety and integrity of the underground system
- Dual-rated to accept a wide range of copper or aluminum conductors
- Homac Flood-Seal® insulating rockets serve as waterproof spare outlet caps until used and are also resealable
- Homac Flood-Seal® Aluminum multi-port connectors – RAB series
- Sweetheart™ outlet configuration
- Aluminum Flood-Seal twin-screw mechanical connectors-UH 1000 series



Pictured: Aluminum Flood-Seal® multi-port connectors – RAB series

Solve challenges in your distribution system

Elastimold™ switchgear

- Dead front construction, with no energized - live parts exposed
- Elastimold™ insulates with EPDM rubber, the switchgear is maintenance free¹ and environmentally friendly, no leaking elements
- Elastimold™ switchgear is compact, and its modular designs and small footprint permit field assembly inside tight vaults or pad mounted configurations
- As changes are required by Smart Grid and other innovations, relax — Elastimold™ switchgear is field upgradable, and scalable because of its modular construction
- Elastimold™ switchgear is submersible, and it can be installed, as required, in any position



Pictured: Elastimold®™ switchgear

Current measurement in underground vault applications

RSS-1 submersible current sensor

- Hermetically sealed, rustproof, waterproof submersible, split core current sensor for use in underground vaults
- Low energy output reduces the safety risk in an open circuit
- Voltage clipping – output limited to 65 V in faults to protect secondary devices from damage, yet provides enough magnitude for indication
- Unique winding structure to help ensure accuracy without “cross talk” from adjacent conductors
- Easy install “tool free” and split core design, easy to deploy even with typical PPE and disconnecting the circuit is not necessary
- Compatible with meters and controllers that accept a nominal input voltage of 10 V for current measurement



Pictured: RSS-1 submersible current sensor

Voltage measurement in underground vaults applications

VIL submersible medium voltage VTs- control, power, relaying or metering applications

- Indoor VT for use in a subsurface installation
- Up to 25 kV, 125 kV BIL
- Uses dead-front elbow connectors for primary connection
- VIL-95 & VIL-12
Designed with secondary junction box for intermittent submersible operation where VTs are not permanently submerged under water
- VIL-95S & VIL-12S
Designed with secondary wires directly encapsulated into the polyurethane for a water-tight connection allowing installation where they are permanently submerged



ABB: A company you want to work with

The electrifying force for a brighter grid future



Partnership powers success

You won't find a more dedicated, committed and knowledgeable team than the experts at ABB. Around the globe and throughout your community, this team is dedicated to your success.



Get connected to an account manager today

ABB