



---

**ABB Ltd.**  
**[solutions.abb/cylon](https://solutions.abb/cylon)**

**Additional information**

We reserve the right to make technical changes or modify the contents of this document without prior notice. With regard to purchase orders, the agreed particulars shall prevail. ABB does not accept any responsibility whatsoever for potential errors or possible lack of information in this document.

We reserve all rights in this document and in the subject matter and illustrations contained therein. Any reproduction, disclosure to third parties or utilization of its contents – in whole or in parts – is forbidden without prior written consent of ABB.

© Copyright 2021 ABB. All rights reserved.  
Specifications subject to change without notice.



—  
GUIDE

# ABB INTEGRA™

## How to Buy



- Quick reference guide on how to buy INTEGRA™ product bundles

---

**The licensing model for the INTEGRA™ IT-8000 controller is scalable and features standard drivers for ultimate flexibility and expandability.**

**The INTEGRA™ IT-8000 controller operates with Niagara Framework® for optimum performance.**

---

# Table of contents

## PRODUCT OVERVIEW

<b>004–005</b>	<b>INTEGRA IT-8000</b>
<b>006</b>	<b>INTEGRA-Supervisor</b>
<b>007</b>	<b>INTEGRA-ProPack</b>

## BUYING GUIDE

<b>008–009</b>	<b>INTEGRA IT-8000 bundles</b>
<b>010</b>	<b>INTEGRA-Supervisor</b>
<b>011</b>	<b>INTEGRA ProPack</b>

# INTEGRA™ IT-8000 controller

## Opening limitless possibilities for innovation

Part of the INTEGRA family, the IT-8000 is an embedded Internet of Things (IoT), BTL-listed BACnet® Building Controller (B-BC) that connects to ABB Cylon® BACnet field controllers.

The IT-8000 is also capable of connection to, and network management of a variety of diverse devices and subsystems using various protocols including, BACnet, KNX®, Modbus®, LonWorks™, M-Bus, SNMP, oBIX, OPC-AU and MQTT.

When connected to an Ethernet or wireless LAN, the IT-8000 uses Internet connectivity and web-serving capability to provide integrated control, supervision, network management, scheduling, data logging, alarming, and rich graphical displays through a standard Web browser.

### Easy integration

INTEGRA brings provisioning tools for common processes including updating distributions, and security settings including certificates.

- Integrates with CBXi controllers
- Works as a DHCP server
- Application templates
- Automatically creates BACnet ABB Cylon network, devices and controller points
- Launches CXproHD directly from a CBXi controller

Implementing INTEGRA creates useful functions and benefits to developers. Users who have imported from CXproHD can easily navigate back to the controller and implement immediate changes to the saved strategy.

You can now debug, make code changes and download right to the controller.

### Benefits of INTEGRA

- Multi-protocol management: Integrate BACnet, Modbus, LonWorks and other protocols into one common system with uniform data presentation
- Powerful Security (RBAC)
- Faster development time
- Easy integration

With simple configuration, tool-less installation, enhanced integration and high-powered performance, the INTEGRA IT-8000 controller provides ultimate flexibility in connecting and controlling buildings worldwide.

- Remote connectivity allows control, monitoring, and management of field controllers
- Scalable hardware and software make it suitable for installation in small building to large campus applications
- The INTEGRA-Supervisor software can connect multiple IT-8000 controllers and their data to provide aggregated information, such as; archiving, master scheduling, real time data, history, and alarms, to create a single, unified application.

### Licensing

The licensing model for the INTEGRA IT-8000 controller is scalable and features standard drivers for ultimate flexibility and expandability. The INTEGRA™ IT-8000 controller operates with Niagara Framework® for optimum performance.

Scalable licensing with 100, 250, 500, 1250, 5000 and 10000 data point packs.

### Intuitive user interface

The IT-8000 has a bold and intuitive interface. Modern and easy to use, the platform utilizes HTML5 to provide an array of rich features. The powerful new UI framework makes the user experience simpler and more robust, giving maximum control of data and decisions. The optimized workflow allows users to find and visualize data points quickly based on a powerful tagging system.

A truly open framework, IT-8000 delivers a variety of notable improvements to take full advantage of the IoT, including advanced visualization, search, security and navigation tools. With the now tripled number of drivers available, the ability to communicate with even more building controls offers development of cutting-edge building automation devices.

### Faster and easier installation

- Standard Enclosure (Din Rail)
- TI AM335X @ 1GHz Processor
- 1GB RAM
- 4+GB Flash
- Wi-Fi (Client or WAP)
- Built in Webserver
- USB Flash Drive
- High Speed Field Bus Expansion (USB)
- 2 x Isolated RS 485 Ports
- 2 x 10/100MB Ethernet Ports
- -20...60 Deg C Ambient operating temp
- Unlimited Concurrent Users (webclients)
- Software can be updated to the latest version (Cyber Security) with a Software Maintenance Agreement (SMA) for 1, 3 or 5 Years.

01 Multi-protocol management integrates diverse protocols into one common system with uniform data presentation.





---

# INTEGRA™ Supervisor

## Niagara Framework N4

## Enterprise Management Software

INTEGRA-Supervisor with N4 software provides for maintaining a network of multiple INTEGRA stations via standard web browsers along with server-level functions including centralized data storage for alarms, histories/trends, system-wide database management, as well as integration with enterprise class software applications.

BTL-listed as an BACnet® Advanced Operator Workstation (BAWS) and BACnet Operator Workstation (B-OWS), the INTEGRA-Supervisor is an enterprise management server class software solution that connects multiple INTEGRA IT-8000 controllers, along with other IP-based controllers and field devices, to be networked together. It serves real-time graphical information to standard web-browser clients and provides serverlevel functions.

These functions include:

- Centralized data logging and trending
- Archiving to external databases
- Alarming
- Dashboarding
- System navigation
- Master scheduling
- Database management
- Integration with other enterprise software applications through an XML interface (oBIX standard)

INTEGRA-Supervisor also includes a comprehensive graphical engineering toolset for application development.

### Application

The INTEGRA-Supervisor can be used in conjunction with the IT-8000 controllers to aggregate information, including realtime data, history, and alarms, to create a single, unified application.

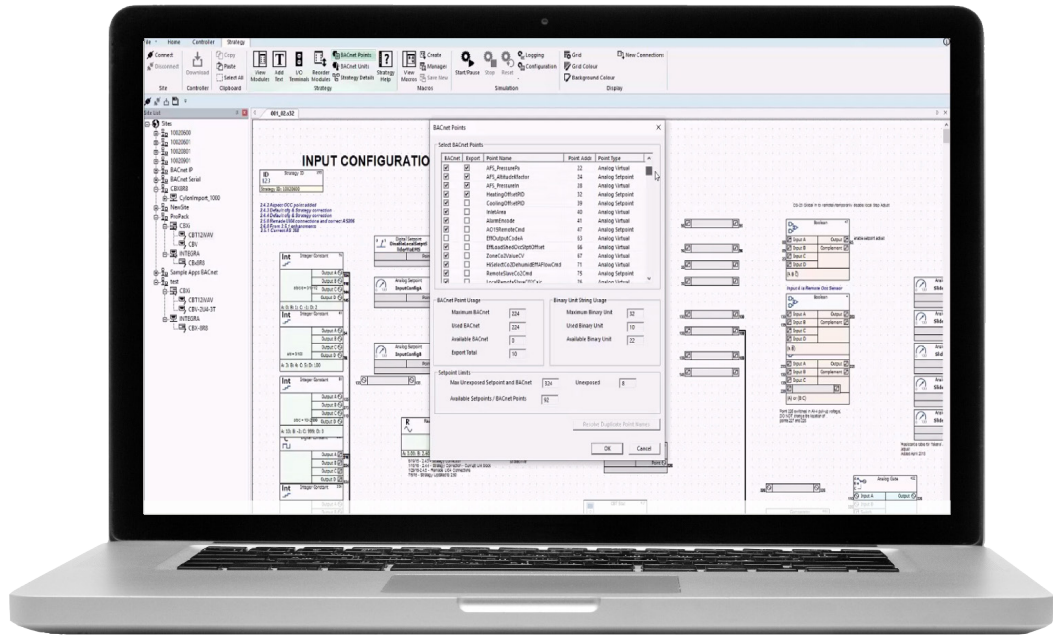
---

Single tool used to program the INTEGRA-Supervisor and IT-8000 network controllers

### Enterprise Management Software

- Quickly navigate to individual buildings using tags to diagnose problems
- Compare data between buildings
- Export system data to external databases
- Remotely back up INTEGRA™ applications to INTEGRA-Supervisor
- Robust built-in analytic capabilities supported by standard INTEGRA components and visualizations
- Enterprise level history, trends and alarms
- Audit Trail provides chronological history of user transactions

**Eligible for accreditation under the Federal Risk Management Framework (RMF)**



# INTEGRA™ ProPack

## Simplifying engineering and programming

—  
01 INTEGRA-Supervisor  
comprehensive  
graphical engineering  
toolset for application  
development

INTEGRA-ProPack is a Niagara service designed to simplify the engineering and programming of the IT-8000 network controller.

### Import data directly from the CBXi controller

ProPack allows data to be ported directly from the CBXi controller via CXproHD and automatically creates the BACnet network, devices and controller points.

This service is designed to reduce deployment time when connecting the IT-8000 to ABB Cylon BACnet field controllers.

Implementing INTEGRA-ProPack creates useful functions and benefits to developers.

- Automatically creates BACnet ABB Cylon network, devices and controller points
- Users who have imported data from CXproHD can easily navigate back to the CBXi controller and implement immediate changes to the strategy.
- Now you can debug, make code changes and download to the controller.

INTEGRA-ProPack can now be licensed for use on a non-ABB Cylon-branded Niagara engine



---

**Purchasing has been simplified with quick pick bundles, that do not include any device additions.**

**Ordering INTEGRA™ in bundles saves time and makes the ordering process easier. Bundles also speed up the process of data entry and inventory management.**

## INTEGRA IT-8000 Bundles

### IT-8000 Bundles for US and Worldwide WLAN codes

All new orders of the INTEGRA IT-8000 controller and INTEGRA-Supervisor ship with a license for the Niagara 4 platform.

Description	Product name	Product code
Includes core license for <b>250 points</b> Made up of IT-8000-XXWIFI + IT8-005-COR + IT8-005-SM0	IT-8005-USWIFI-EMEA Initial 250pt USWiFi	2CQG150114R4011
	IT-8005-WWWIFI-EMEA Initial 250pt WWWiFi	2CQG150115R4011
	IT-8005-NOWIFI-EMEA Initial 250pt NoWiFi	2CQG150126R4011
Includes core license for <b>500 points</b> Made up of IT-8000-XXWIFI + IT8-010-COR + IT8-0010-SM0	IT-8010-USWIFI-EMEA Initial 500pt USWiFi	2CQG150116R4011
	IT-8010-WWWIFI-EMEA Initial 500pt WWWiFi	2CQG150117R4011
	IT-8010-NOWIFI-EMEA Initial 500pt NoWiFi	2CQG150127R4011
Includes core license for <b>1250 points</b> Made up of IT-8000-WIFI + IT8-025-COR + IT8-025-SM0	IT-8025-USWIFI-EMEA Core 1250 pt USWiFi	2CQG150118R4011
	IT-8025-WWWIFI-EMEA Core 1250 pt WWWiFi	2CQG150119R4011
	IT-8025-NOWIFI-EMEA Core 1250 pt NoWiFi	2CQG150128R4011
Includes core license for <b>5000 points</b> Made up of IT-8000-XXWIFI + IT8-100-COR + IT8-100-SM0	IT-8100-USWIFI-EMEA Core 5000pt USWiFi	2CQG150120R4011
	IT-8100-WWWIFI-EMEA Core 5000pt WWWiFi	2CQG150121R4011
	IT-8100-NOWIFI-EMEA Core 5000pt NoWiFi	2CQG150129R4011
Includes core license for <b>10000 points</b> Made up of IT-8000-XXWIFI + IT8-200-COR + IT8-200-SM0	IT-8200-USWIFI-EMEA Core 10000pt USWiFi	2CQG150122R4011
	IT-8200-WWWIFI-EMEA Core 10000pt WWWiFi	2CQG150123R4011
	IT-8200-NOWIFI-EMEA Core 10000pt NoWiFi	2CQG150130R4011

**Note:** XXWIFI-E = USWIFI-E or WWWIFI-E

e.g. IT-8005-USWIFI-E = IT-8000 Controller with US WLAN country code Wi-Fi + IT8-005-COR + IT8-005-SM0, WW =Worldwide WLAN country code Wi-Fi.

## INTEGRA-Supervisor

Enterprise management server class software solution

### 1. Choose Niagara connections

All Open IP Drivers included e.g. BACnet, Modbus, M-Bus, LON, KNX, SNMP, oBiX, MQTT, OPC UA. INTEGRA-Supervisor allows for unlimited concurrent users (webclients). Note, a high number of active connections may impact performance. Additional point packs and drivers can be added providing for greater flexibility and expansion. Software can be updated to the latest version with a Software Maintenance Agreement (SMA) for 1, 3 or 5 Years.

Description	Product name	Order code
0 Niagara device connections <sup>1</sup>	ITS-000-SUP Core 0 connections	2CQG153202S4061
1 Niagara device connections	ITS-001-SUP Core 1 connections	2CQG153204S4061
10 Niagara device connections	ITS-010-SUP Core 10 connections	2CQG153209S4061
100 Niagara device connections	ITS-100-SUP Core 100 connections	2CQG153214S4061
Unlimited Niagara device connections	ITS-UNL-SUP Core unlimited connections	2CQG153221S4061

Note 1: Connect 500 – 50,000 Data Points. Additional IT-8000 Connections can also be added.

### 2. Select add-ons

Description	Product name	Order code
Add 1 Niagara device connections to Supervisor	ITS-001-ADD Add 1 connections	2CQG153203S4061
Upgrade to ITS-100-SUP from ITS-000-SUP to ITS-010-SUP1	ITS-100-UPG Upgrade to 100 connections	2CQG153215S4061
Convert SUP-100 to SUP-UNL	ITS-UNL-UPG Upgrade 100 to unlimited	2CQG153222S4061
Alarm Console client. Support for Niagara alarm monitoring	ITS-ALM-CNLS Alarm Console client	2CQG153218S4061
Open License change fee to change an existing license4	IT-LIC-CHG License change fee	2CQG153701S4061

### 3. Add maintenance

Compulsory initial Software Maintenance Agreement (SMA) is for 18 months on all N4 installations of both INTEGRA IT-8000 and INTEGRA-Supervisor. Additional years can also be purchased up front, or retrospectively in 1, 3 or 5 year blocks. Gap charges apply if SMA is purchased after expiration (5 year max). All update builds, patches and upgrades including cyber security are provided as part of the SMA

Description	Product name	Order code
18 month maintenance	ITS-000-SM0 18 month maintenance	2CQG153621S4061
	ITS-001-SM0 18 month maintenance	2CQG153625S4061
	ITS-010-SM0 18 month maintenance	2CQG153637S4061
	ITS-100-SM0 18 month maintenance	2CQG153641S4061
	ITS-UNL-SM0 18 month maintenance	2CQG153645S4061
1 year maintenance	ITS-000-SM1 1 year maintenance	2CQG153622S4061
	ITS-001-SM1 1 year maintenance	2CQG153626S4061
	ITS-010-SM1 1 year maintenance	2CQG153638S4061
	ITS-100-SM1 1 year maintenance	2CQG153642S4061
	ITS-UNL-SM1 1 year maintenance	2CQG153646S4061
3 year maintenance	ITS-000-SM3 3 year maintenance	2CQG153623S4061
	ITS-001-SM3 3 year maintenance	2CQG153627S4061
	ITS-010-SM3 3 year maintenance	2CQG153639S4061
	ITS-100-SM3 3 year maintenance	2CQG153643S4061
	ITS-UNL-SM3 3 year maintenance	2CQG153647S4061
5 year maintenance	ITS-000-SM5 5 year maintenance	2CQG153624S4061
	ITS-001-SM5 5 year maintenance	2CQG153628S4061
	ITS-010-SM5 5 year maintenance	2CQG153640S4061
	ITS-100-SM5 5 year maintenance	2CQG153644S4061
	ITS-UNL-SM5 5 year maintenance	2CQG153648S4061

## Optional | Add device integration pack for non-Niagara IP Connections

Description	Product name	Order code
Add support for 25 non-Niagara devices or 1250 points	ITS-025-DIP-EMEA Add 1250pt	2CQG153233S4061
Add support for 50 non-Niagara devices or 2500 points	ITS-050-DIP-EMEA Add 2500pt	2CQG153234S4061
Add support for 100 non-Niagara devices or 5000 points	ITS-100-DIP-EMEA Add 5000pt	2CQG153236S4061
Add support for 200 non-Niagara devices or 10000 points	ITS-200-DIP-EMEA Add 10000pt	2CQG153237S4061
Add support for 500 non-Niagara devices or 25000 points	ITS-500-DIP-EMEA Add 25000pt	2CQG153238S4061
Add support for 1000 non-Niagara devices or 50000 points	ITS-1000-DIP-EMEA Add 50000pt	2CQG153235S4061

## INTEGRA-ProPack

License file for foreign Niagara devices and foreign supervisors

The INTEGRA-ProPack is an ABB Niagara service designed to simplify the engineering and programming of the IT-8000 network controller and increase System Integrator productivity.

Available on ABB Cylon® IT-8000 controllers, the INTEGRA-ProPack imports the CXproHD database into the IT-8000 and automatically creates the BACnet® network, devices and controller points into the Niagara Database Tree.

This service is designed to reduce deployment time when connecting the IT-8000 to ABB Cylon BACnet field controllers.

INTEGRA-ProPack requires Niagara 4.6.96.28 or higher.

Description	Product name	Order code
Supports up to 5 devices on non-INTEGRA IT-8000 or non-INTEGRA-Supervisor software	INTEGRA-PROPACK-5 ProPack 5 device	2CQG153401S4061
Supports up to 10 devices on non-INTEGRA IT-8000 or non-INTEGRA-Supervisor software	INTEGRA-PROPACK-10 ProPack 10 device	2CQG153402S4061
Supports up to 25 devices on non-INTEGRA IT-8000 or non-INTEGRA-Supervisor software	INTEGRA-PROPACK-25 ProPack 25 device	2CQG153403S4061
Supports up to 50 devices on non-INTEGRA IT-8000 or non-INTEGRA-Supervisor software	INTEGRA-PROPACK-50 ProPack 50 device	2CQG153404S4061
Supports up to 100 devices on non-INTEGRA IT-8000 or non-INTEGRA-Supervisor software	INTEGRA-PROPACK-100 ProPack 100 device	2CQG153405S4061
Supports up to 200 devices on non-INTEGRA IT-8000 or non-INTEGRA-Supervisor software	INTEGRA-PROPACK-200 ProPack 200 device	2CQG153406S4061