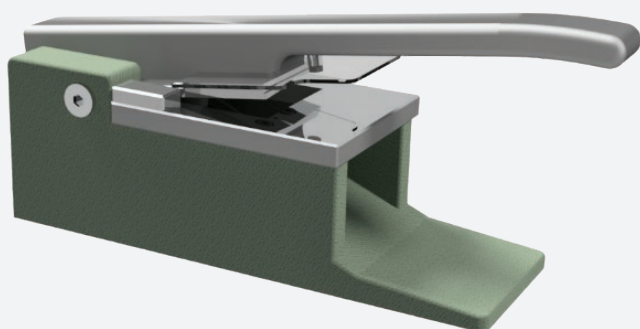


ABB L&W Sample Cutter

Testing and industry-specific instruments



ABB's L&W Sample Cutter is used for easy and quick preparation of accurate and precise test pieces for use in tearing, bending resistance and folding strength tests, or in the L&W Autoline Elrepho Module. It is manually operated and ergonomically designed with safety features for easy and secure operation across a wide range of paper grades and grammages.

ABB's L&W Sample Cutter is a triple shear cutting, simple-yet-sturdy tool for easy, accurate and precise cutting of paper test pieces. The punch and die are made of tempered tool steel to ensure precision cutting, which is essential for accurate and reliable testing. This design also enables maximum life of the punch and die.

Operation is simple and requires samples to be correctly placed in the machine and cross-machine directions, aligned with the back stop within the cutter before pressing the handle to cut. The ergonomic design and slanting edges of the cutting knife reduces the required cutting force and makes the L&W Sample Cutter very easy to operate.

The cut test pieces slide towards the operator automatically for quick and safe collection, meaning the operator does not have to insert hands inside the cutting area to retrieve the test pieces.

Furthermore, there is a safety device around the punch to protect the operator from hand or finger injuries.

Features

- Tempered tool steel punch and die
- Ergonomic handle
- Slide for collecting test pieces after cutting
- Cuts wide range of grades and grammages
- Cuts single and multiple sheets (depending on grammage)
- Safety device around punch
- Robust construction

Benefits

- Easy to use
- Quick retrieval of cut pieces
- Safe and ergonomic operation
- Ensures testing requirements are met every time with precise sample preparation

ABB AB/L&W
P.O. Box 4
SE-16493 Kista
Sweden
Tel: +46 8 477 90 00

[abb.com/
pulpandpaper](http://abb.com/pulpandpaper)

The information provided in this data sheet contains descriptions or characterizations of performance which may change as a result of further development of the products. Availability and technical specifications are subject to change without notice.

Copyright© 2023 ABB. All rights reserved.

Technical specifications – Sample Cutter, Code 207

	62 × 50 mm (ISO, SCAN, APPITA/AS, DIN)
Tearing test pieces	63 × 53 mm (TAPPI)
Bending and creaseability test pieces	38 × 80 mm
Grammage range	40-600 g/m2
L&W Autoline Elrepho Module backing samples	240 x 100 x 145 mm
Dimensions	9.5 x 3.9 x 5.7 in
	5.2 kg
Net weight	11.5 lb