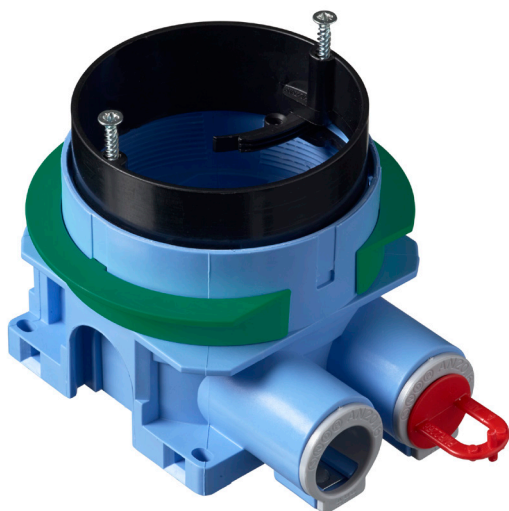


08/2021

# Universal hollow wall box AU60.10

## The most flexible mounting box on the market



The universal hollow wall box AU60.10 is suitable for 1 - 2 - 3 layers of gypsum boards, and all other wall structures with wall thickness 12,5 – 40 mm without accessories. Box includes a rotating, steplessly adjustable installation ring with proven functionality. Can be mounted with box support and with truss fixtures.

Can be used with boards of different thicknesses and board combinations without accessories. Universal hollow wall box completes the IDEAL range to best installation range in Nordics.

### Properties

- The structure of the installation ring makes adjusting the height easy, quick and reliable.
- Adjustment for 1 - 2 - 3 plasterboard walls with thickness 12,5 – 40 mm.
- Protective cover and adapter ring are made of post-consumer recycled plastics and reducers are made of post-industrial recycled plastics.
- The installation ring can be tilted as much as 4°.
- Two open fixed inlets with 20 mm diameter that both have a reducers with 16 mm diameter. The other also has a plug.
- Made of halogen free material (IEC/61249-2-21).
- Compatible with all other ABB box accessories.



## Order information

Type	Product ID	EAN	Description	Package
<a href="#">AU60.10</a>	2TKA00004282	6438199008165	Mounting box, board thickness 12-40mm	80

ABB Oy  
Porvoon Sisäkehä 2, PO Box 16  
FI-06101 Porvoo, Finland  
Phone: +358 10 22 11

## AU60.10 features

### Adjustable installation ring

The installation ring can be adjusted by opening the fastening screws and turning the locking levers to the open position. There is an adjustment clearance of 14 mm. The ring can be tilted 0-4°.

### Box cover

is made of post-consumer recycled material.

### Reducers

Ø 20/16 mm on both fixed inlets. Made of post-industrial recycled plastic.

### Plug

### Two fixed inlets

Fixed inlets (Ø 20 mm) with locking claws.

### Adapter ring

The green adapter ring is used with a single layer of board (12-13 mm). The ring is removed when the wall thickness is two boards (24-26 mm). Made of post-consumer recycled plastic.

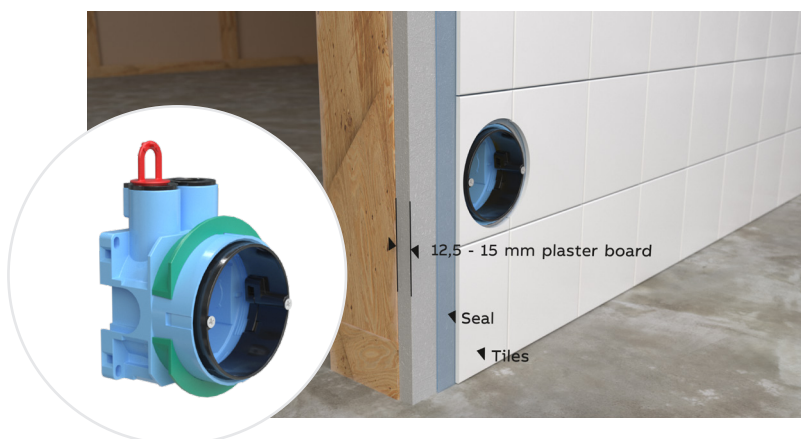


### Step towards sustainability

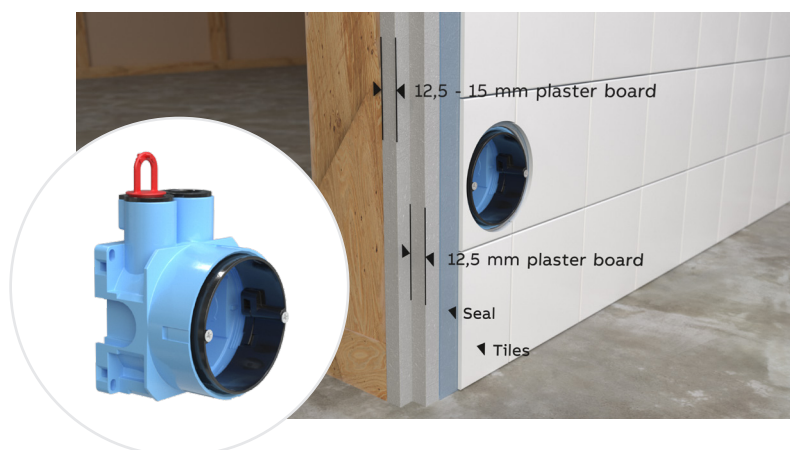
We are working towards making System Ideal and System ABB the most sustainable ranges of flush mounted boxes on Nordic market. Ranges are produced in carbon neutral Nordic based production site with highest content of recycled base material on market (up to 50%).

## Solution for most demanding installation applications

The green adapter ring is used with a single layer of board.



The green adapter ring is removed if there are two layers of board.



Installation ring can be adjusted steplessly and locked by turning the locking levers to locking position and by attaching the fastening screws.

