

New product

Hazlux® LI1-EM LED Series

Versatile, shock-resistant, and explosion-proof lighting with a slim design, the LI1-EM LED Series can be mounted on a wall, ceiling, and pole in various hazardous locations, ranging from mines to petrochemical facilities.

CERTIFICATION

CLASS I

Division 1

Group C, D

Classification may vary depending on the product configuration. Please follow catalogue information and exceptions.

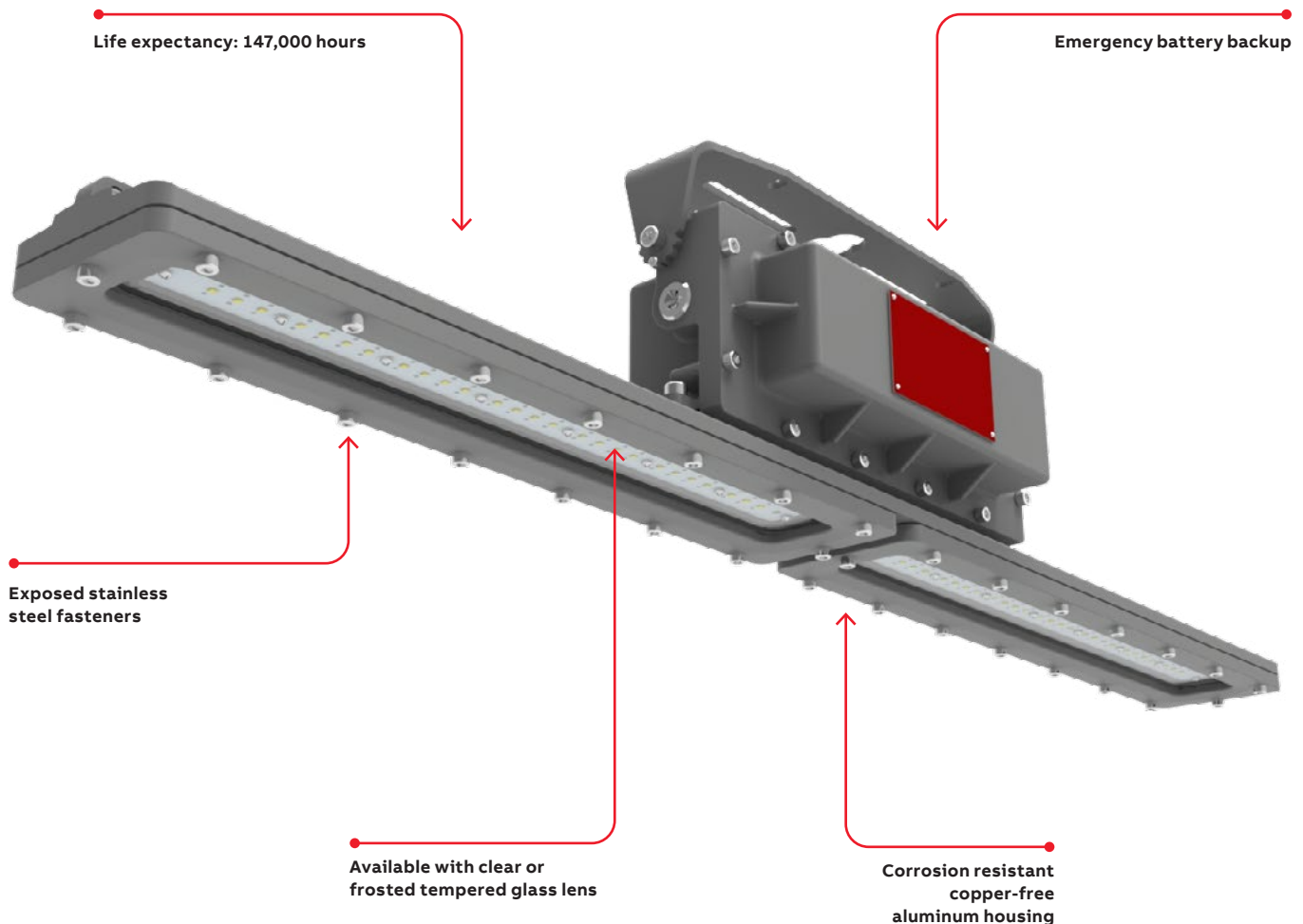
APPROVALS



APPLICATIONS

Mining
Paper mills
Chemical/industrial facilities
Wastewater treatment plants
Petrochemical facilities

LINEAR LIGHTING



Hazlux® LI1-EM LED Series

Key features and information

FEATURES

Operating temperature: -4°F to 113°F (-20°C +45°C)
optimal 77°F (25°C)

Exposed hardware made of stainless steel

Slim and compact design

Emergency run time: 90 minutes

HOUSING

Housing made of copper-free aluminum

Tempered glass lens is impact and thermal shock resistant

LED

Efficacy: up to 136 Lm/W

Lumen output: 10,800 lumens

OSRAM LED's

CRI Ra>70

Correlated Color Temperature (CCT): 5000K (standard)

ELECTRICAL

Operating voltage: 120-277 VAC (50/60Hz)

Power factor 0.95

Driver efficiency 90%

THD <20%

Surge protection standard up to 10KV
(Contact your sales representative if high protection is required.)

MOUNTING

Pendant mount

Optional yoke/pipe bracket for wall/ceiling or pole mount

Chain mount ("Chain" supplied by others)

APPROVALS

UL 844

UL924

CUL approved to CSA 22.2 No. 137,
CSA 22.2 No. 250.0-08, CSA 22.2 No. 250.13

IP66

5G (shock and vibration resistant)

1000hrs salt spray

WARRANTY

5 year limited warranty

T-code chart

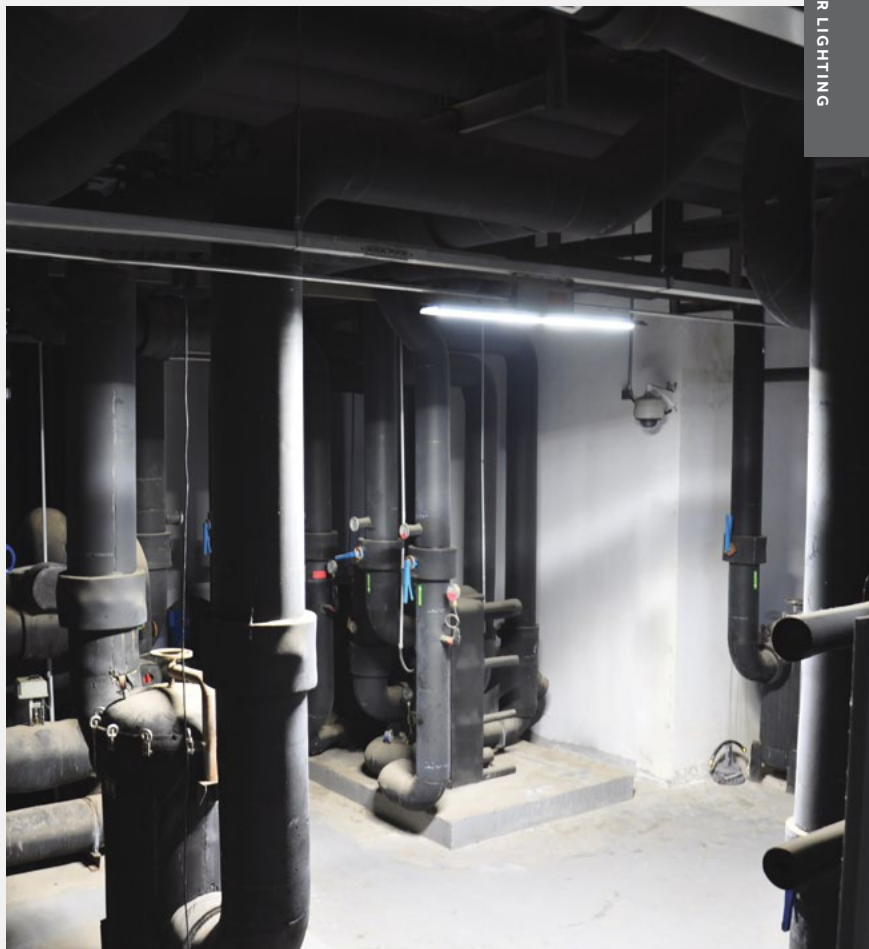
Fixture	80 watt
C1D1	T6

Electrical specifications

Specification	LI1-EM-8 (battery backup)
Rated power	80W (6W)
Input voltage	120-277V only (50/60Hz)
Battery	Nickel-cadmium
Expected battery life	5 years
Charge time	24 hours
Emergency run time	90 min.
Input current (standard mode)	0.67/0.29A (AC120/277V)

Lighting output

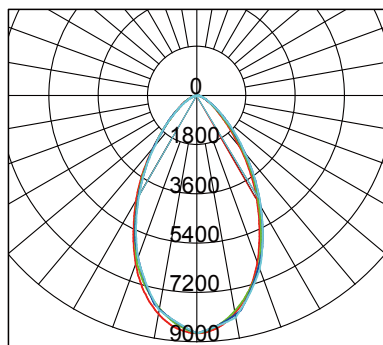
Fixture	80 watt
Lumen output - normal mode	10,800
Lumen output - emergency mode	812
Lumen per watt - normal mode	136



Hazlux® LI1-EM LED Series

PHOTOMETRY

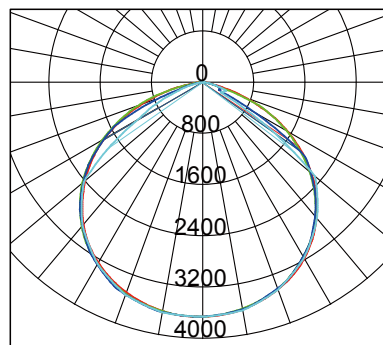
60 degree



— C0/180,60.8
— C30/210,60.8
— C60/240,61.3
— C90/270,61.0

BUG rating: B3-U0-G2

110 degree

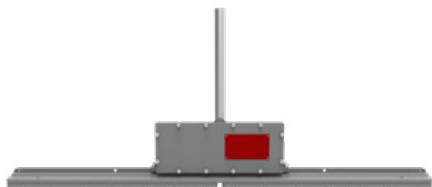


— C0/180,115.0
— C30/210,115.0
— C60/240,114.0
— C90/270,107.0

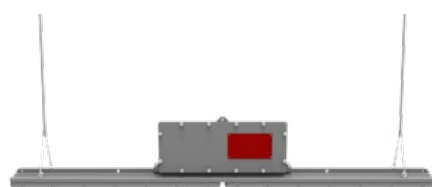
BUG rating: B3-U0-G2

MOUNTING AND OPTIONAL ACCESSORIES (sold separately)

Pendant mount (included standard)

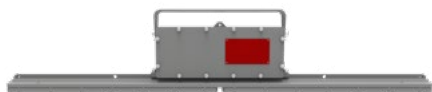


Chain mount (compatible)

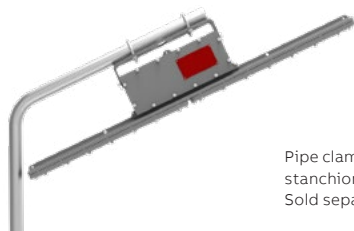


Chain supplied by others.

Ceiling & wall mount (optional accessory)



Stanchion mount (optional accessory)



Pipe clamp and yoke/pipe bracket required for stanchion installation.
Sold separately.

Accessories



PC01 - Pipe clamp (1 pair)
Pipe clamp (M8*48mm) for pole Ø 1-7/8" (48mm)



PC02 - Pipe clamp (1 pair)
Pipe clamp (M8*60mm) for pole Ø 2-3/8" (60mm)



UB02 - Yoke/pipe bracket
(SUS 304) stainless steel

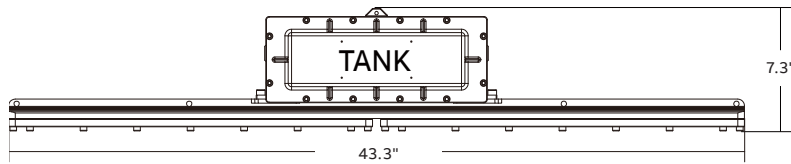


SC04 - Stainless steel
safety cable kit

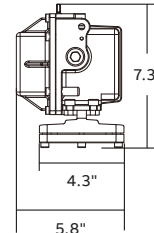
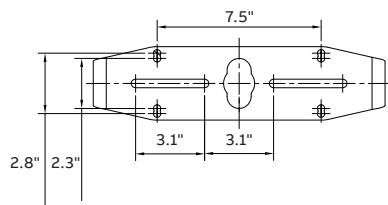
Hazlux® LI1-EM LED Series

DIMENSIONS

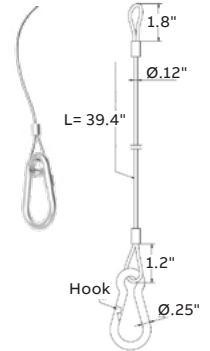
Dimensions are approximate and subject to change.



Bracket dimensions



SC04 - Stainless steel safety cable kit



Model	Weight	Dimensions (L x W x H)
LI1-EM-8	12.2kg/26.9lbs	43.3 x 5.8 x 7.3 in

NUMBERING SYSTEM

Lighting fixture

1	2	3	4	5	6	7	8	9	10
LI1	8	1	K5	N	TG	P	G	EM	U
Series	Wattage/ lumens	Voltage	Color temp	Optics	Lens	Mounting	Color	Emergency	Market

Ordering information

Part	Part number	Description
1 Series	LI1	Hazlux® linear light LED
2 Wattage/lumens	8	80W (10,800 lm)
3 Voltage	1	120-277V
4 Color temp	K5	5000K
5 Optics	N	60° ¹
	W	110° (standard)
6 Lens	TG	Clear glass
	FG	Frosted glass ¹
7 Mounting	P	NPT 3/4 pendant mount
	U	NPT 3/4 pendant mount + yoke bracket
8 Color	G	Gray
9 Emergency	EM	Emergency 90 minutes
10 Market	U	U.S. market
	Blank	Canadian market

¹Longer lead time, contact your sales representative for more details

Accessories (sold separately)

PC01	Pipe clamp (1 pair) Pipe clamp (M8*48mm) for pole Ø 1-7/8" (48mm)
PC02	Pipe clamp (1 pair) Pipe clamp (M8*60mm) for pole Ø 2-3/8" (60mm)
SC04	Stainless steel safety cable kit
UB02	Yoke/pole bracket (SUS 304) stainless steel

Note: For Canadian market, please add "-CA" to the part no. (ex: PC01-CA).