

Hazlux® H3 LED Series

A safe, dependable and rugged luminaire with an exclusive design that maximizes heat dissipation, offers excellent performance and energy efficiency.

CERTIFICATION

CLASS I

Division 2 Group A, B, C, D

Zone 2 Groups IIC, IIB, IIA

CLASS II

Division 1 Group E, F, G¹

Division 2 Group F, G²

CLASS III

¹Optics: CUT reflector not suitable for Class II, Div 1.
Classification may vary depending on the product configuration. Please follow catalogue information and exceptions.

APPROVALS



Not all DL series are DLC qualified.
For all qualified products, please visit: www.designlights.org/qpl



UL844
UL1598
UL8750

APPLICATIONS

High mast

Parking lots

Tunnels

Swimming pools

High bay

Coolers and freezers

Inspection

Quality control areas

Packaging areas

Hangars

Storage facilities

Oil and gas processing

Agricultural

Chemical/industrial facilities

Field-replaceable driver

Maximizes heat dissipation for higher T-ratings, extended life in extreme ambient temperatures and extra safety

Hinged design for hands-free wiring

Baked epoxy powder finishes and stainless steel exposed hardware for corrosion resistance

Dimming control
0-10 VDC standard

Light output from 5,600 up to 20,100 lumens

Life expectancy: 50,000 to 100,000 hours

LED uses 75% less energy than HID, and 90% less energy than incandescent

Hazlux® H3 LED Series

Key features and information

FEATURES

Operating Temperature: -40F to 131F (-40C to 55C)

Field-replaceable driver

Higher T-ratings, extended life in extreme ambient temperatures and extra safety

Versatile optics include internal reflector options with 35°, 45° and 65° beam angles

HOUSING

Baked epoxy powder finishes and stainless steel exposed hardware for corrosion resistance

Hinged design for hands-free wiring

Borosilicate glass globes and polycarbonate CUT lens available

Available with multiple distribution patterns

Housing made of copper-free aluminum

Gray color option and special black anti-corrosion coating available (Hazcote)

Glass Teflon coating option available

LED

Efficacy: up to 151 Lm/W

Lumen output: From 5,600 lumens to 20,000 lumens

Bridgelux LED's

CRI Ra>70

Correlated Color Temperature (CCT): 5000K (standard), 3000 K, 3500 K, 4000 K (optional)

ELECTRICAL

0-10 V Dimming

Operating voltage: universal 120-277 VAC (voltage range includes 208 V, 220 V, 240 V etc.), 347-480 VAC (50/60Hz)

Power factor 0.9

Driver efficiency 90%

THD <20%

MOUNTING

Cone-top pendant mount

Ceiling and pendant mount

Wall mount

Pendant mount

25° angle stanchion mount

90° stanchion mount

Hazvertor ring

APPROVALS

UL844

CSA C22.2 No. 137

UL 1598 wet locations

UL 8750 LED safety

CUL approved to CSA 22.2 No. 137, CSA 22.2 No. 250.0-08, CSA 22.2 No. 250.13

DLC

Not all product variations listed on this page are DLC qualified. Visit www.designlights.org/search to confirm qualification.

NEMA 4X

WARRANTY

5 year limited warranty

T-code chart

	Class I Zone 2 Groups IIC, IIB, IIA	Class I Division 2 Groups A, B, C, D	Class II Groups E, F, G	Simultaneous Class I Division 2 and Class II
Glass globe DL005, DL007, DL010				
Ambient temp. -40 to 104°F (-40 to 40°C)	T5	T5	T6	T5
Ambient temp. -40 to 131°F (-40 to 55°C)	T4	T4A	T6	T4A
Glass globe DL005, DL007, DL010 with internal reflector I3, I4, I6				
Ambient temp. -40 to 104°F (-40 to 40°C)	T4	T4A	T6	T4A
Glass globe DL015, DL017, DL020				
Ambient temp. -40 to 104°F (-40 to 40°C)	T4	T4A	T4A	T4A
Optic type cut DL005, DL007, DL010				
Ambient temp. -40 to 104°F (-40 to 40°C)	T5	T5	T5 ¹	T5 ¹
Ambient temp. -40 to 131°F (-40 to 55°C)	T4	T4A	T4A ¹	T4A ¹
Optic type cut DL015, DL017, DL020				
Ambient temp. -40 to 104°F (-40 to 40°C)	T4	T4A	T4A ¹	T4A ¹

¹Cut reflector: Class II, Division 2, Groups F, G only

Surge suppression rating

ANSI C82.77-5 CAT C low compliant – no external surge suppression device required.

ANSI surge type	Differential mode (L-N)	Common mode (L-G, N-G, L and N-G)
1.2/50 µs combination wave (w/t 2 Ω)	6 kV	6 kV

Hazlux® H3 LED Series

ELECTRICAL SPECIFICATIONS

Design Lights Consortium (DLC): summary of test results

Electrical, 120-277 VAC			
Model	Power (W)	Power factor	THD
DL010	71.9	0.97	10.1%
DL015	103.0	0.97	11.0%
DL020	137	0.97	12.3%

Electrical, 347 VAC			
Model	Power (W)	Power factor	THD
DL010	70.2	0.99	7.1%
DL015	104.9	0.99	7.6%
DL020	141.2	0.99	7.8%

Photometry, 120-277 VAC	
TG globe	
Lumens	Lm/W
10,706	147.8
16,063	155
20,468	147.2

Photometry, 347 VAC	
TG globe	
Lumens	Lm/W
10,582	147.7
-	-
21,284	149.6

Photometry, 120-277 VAC	
CUT reflector	
Lumens	Lm/W
9,814	135.4
14,564	140.7
18,782	135.3

Photometry, 347 VAC	
CUT reflector	
Lumens	Lm/W
9,659	134.9
-	-
19,065	134.1

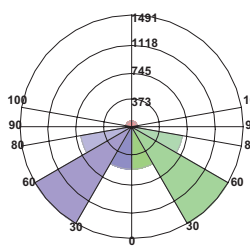
Summary of test results: Certified for optics TG globe and CUT reflector, and for AC input 120V, 277V and 347V

Hazlux® H3 LED Series

PHOTOMETRY

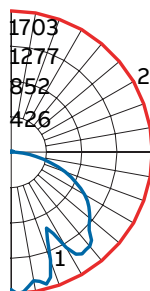
Standard globe	
Catalog number	DL005EUN0-TGC2
Luminaire lumens	5,764
Luminaire efficacy rating (LER)	156
Input watts	37.01
Spacing criterion	0.88
Spacing criterion (90–270)	0.88
Spacing criterion (diagonal)	1.52

Luminaire classification system



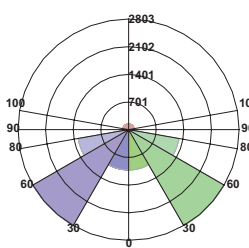
BUG rating : B2-U3-G1

Candlepower curve



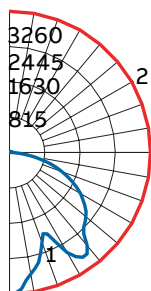
Standard globe	
Catalog number	DL010EUN0-TGC2
Luminaire lumens	10,739
Luminaire efficacy rating (LER)	148
Input watts	72.44
Spacing criterion	0.82
Spacing criterion (90–270)	0.82
Spacing criterion (diagonal)	1.46

Luminaire classification system



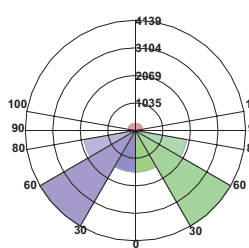
BUG rating : B3-U3-G2

Candlepower curve



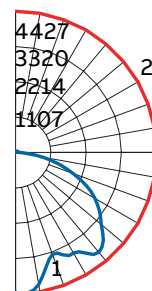
Standard globe	
Catalog number	DL015EUN0-TGC2
Luminaire lumens	16,110
Luminaire efficacy rating (LER)	155
Input watts	103.66
Spacing criterion	1.32
Spacing criterion (90–270)	1.32
Spacing criterion (diagonal)	1.58

Luminaire classification system



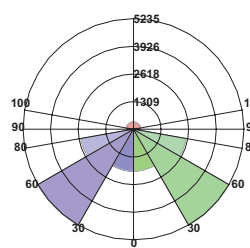
BUG rating : B3-U3-G3

Candlepower curve



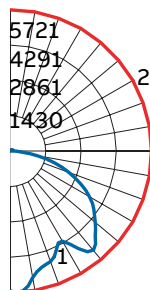
Standard globe	
Catalog number	DL020EUN0-TGC2
Luminaire lumens	20,530
Luminaire efficacy rating (LER)	148
Input watts	139.02
Spacing criterion	1.10
Spacing criterion (90–270)	1.10
Spacing criterion (diagonal)	1.56

Luminaire classification system



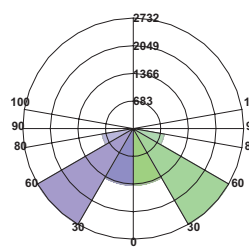
BUG rating : B4-U3-G3

Candlepower curve



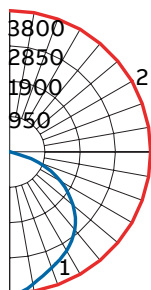
CUT reflector	
Catalog number	DL010EUN0-CUTC2
Luminaire lumens	9,846
Luminaire efficacy rating (LER)	136
Input watts	72.47
Spacing criterion	1.22
Spacing criterion (90–270)	1.22
Spacing criterion (diagonal)	1.38

Luminaire classification system



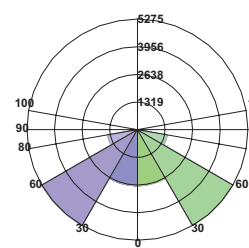
BUG rating : B3-U0-G1

Candlepower curve



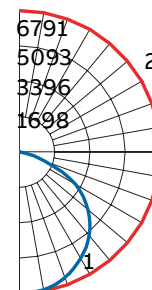
CUT reflector	
Catalog number	DL020EUN0-CUTC2
Luminaire lumens	18,841
Luminaire efficacy rating (LER)	136
Input watts	138.8
Spacing criterion	1.30
Spacing criterion (90–270)	1.30
Spacing criterion (diagonal)	1.42

Luminaire classification system



BUG rating : B4-U0-G1

Candlepower curve



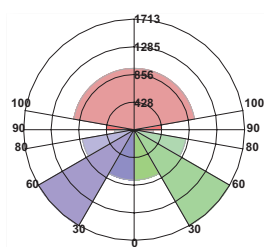
Hazlux® H3 LED

PHOTOMETRY

R5 globe

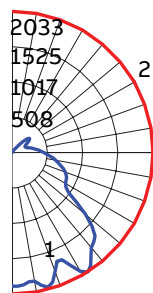
Catalog number	DL010-R5
Luminaire lumens	9763
Luminaire efficacy rating (LER)	132
Input watts	75
Spacing criterion	1.42
Spacing criterion (90–270)	1.42
Spacing criterion (diagonal)	1.54

Luminaire classification system



BUG rating : B2-U4-G3

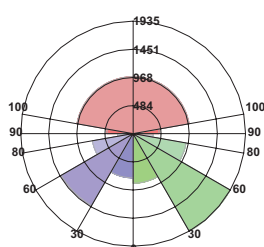
Candlepower curve



R3 globe

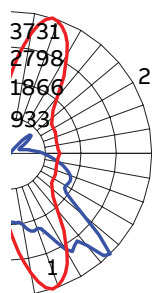
Catalog number	DL010-R3
Luminaire lumens	9851
Luminaire efficacy rating (LER)	133
Input watts	75
Spacing criterion	1.40
Spacing criterion (90–270)	1.82
Spacing criterion (diagonal)	1.46

Luminaire classification system



BUG rating : B2-U4-G3

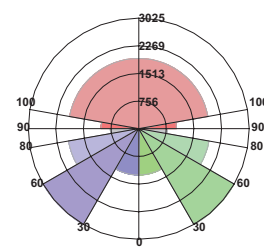
Candlepower curve



R5 globe

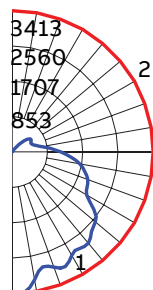
Catalog number	DL020-R5
Luminaire lumens	18767
Luminaire efficacy rating (LER)	137
Input watts	137
Spacing criterion	1.44
Spacing criterion (90–270)	1.44
Spacing criterion (diagonal)	1.62

Luminaire classification system



BUG rating : B2-U5-G5

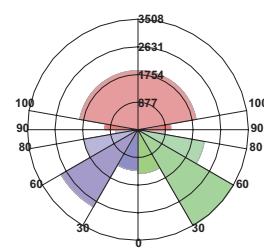
Candlepower curve



R3 globe

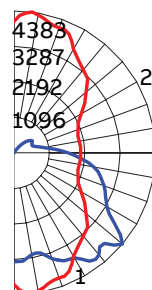
Catalog number	DL020-R3
Luminaire lumens	18764
Luminaire efficacy rating (LER)	137
Input watts	137
Spacing criterion	1.40
Spacing criterion (90–270)	1.90
Spacing criterion (diagonal)	1.58

Luminaire classification system



BUG rating : B3-U5-G5

Candlepower curve



Hazlux® H3 LED Series

MOUNTING AND OPTIONAL ACCESSORIES (sold separately)

Fixture assembly guide



1 Mounting options



2 LED driver tank



3 Globe or reflector



4 Guard (n/a for CUT)



Mounting accessories

Part number	Description	Conduit hub size
VA2	Cone-top pendant ¹	3/4"
VA3		1"
VC2	Ceiling & pendant mount ¹	3/4"
VC3		1"
VB2-VIB	Wall mount ¹	3/4"
VB3-VIB		1"
VP2	3/4" Rigid pendant ¹	3/4"
VS4-VIB	25° Angle stanchion ¹	1-1/4"
VS5-VIB		1-1/2"
VL4-VIB	Straight stanchion ¹	1-1/4"
VL5-VIB		1-1/2"
HV3*	Hazvertor™ adaptor ring Crouse-Hinds ceiling, pendant ² & straight stanchion top hats ^{1,3}	
HV4*	Hazvertor™ adaptor ring stanchion angle mount ^{1,3}	
HV5*	Hazvertor™ adaptor ring wall mount ^{1,3}	

*HV3, HV4 and HV5 Hazvertors are CSA/CSAus certified

Note: • For Canadian market, please add "-CA" to the part no. (ex: VA2-CA).

• For gray finish, please add "G" to the part number.

For US, ex: VA2G. For Canada, ex: VA2G-CA

Globes or refractors

Part number	Description
VGT15	Heat-resistant prismatic glass globe ⁴
VGL15R1	IES type I refractor globe ⁴
VGL15R3	IES type III refractor globe ⁴
VGL15R5	IES type V refractor globe ⁴
CUT	Dark sky cut-off reflector with polycarbonate flat lens ⁴

Note: For Canadian market, please add "-CA" to the part no. (ex: VGT15-CA).

Guards

Part number	Description
VGU22	Cast guard
VGU22P	Polymeric guard

¹ For stainless steel inserts, please add "SI" to part no. (ex: VA2SI)

² Not compatible with HPM2 crouse-hinds top hats

³ Some installations may not be compatible

⁴ Must be replaced by the same refractor.

Note: • For Canadian market, please add "-CA" to the part no. (ex: VGU22-CA).

• For gray finish, please add "G" to the part number.

For US, ex: VGU22G. For Canada, ex: VGU22G-CA

Hazvector™ compatibility



01



02



03

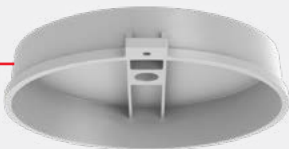
- 01 HazVector™ adaptor ring, model HV3
- 02 HazVector™ adaptor ring, angle machining, model HV4
- 03 HazVector™ adaptor ring, wall mount machining, model HV5



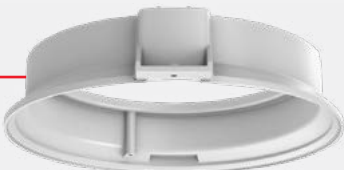
The HazVector™ adaptor ring is designed to let you quickly convert most Crouse-Hinds fixtures to Hazlux® H3 LED Generation 2 fixtures. It is available as an accessory or as an integral component to the Hazlux® H3 LED Generation 2 fixture.

Mounting	Crouse-Hinds model	Crouse-Hinds part number	HazVector™ model
Pendant	APM2 3/4 in.	APM2	HV3
	APM3 1 in.	APM3	HV3
Ceiling	CM2 3/4 in.	CM2	HV3
	CM3 1 in.	CM3	HV3
Wall	TWM2 3/4 in.	TWM2	HV5
	TWM3 1 in.	TWM3	HV5
Stanchion	JM5 1-1/2 in.	JM5	HV4
	PM5 1-1/2 in.	PM5	HV3
Quad mount	QM25 3/4 in.	QM25	HV3

Crouse-Hinds top hat



HazVector™ adaptor ring



Hazlux® H3 LED Generation 2



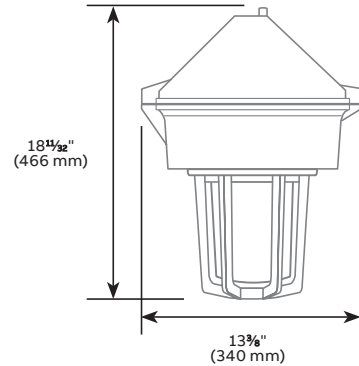
Hazlux® H3 LED Series

DIMENSIONS

Dimensions are approximate and subject to change.

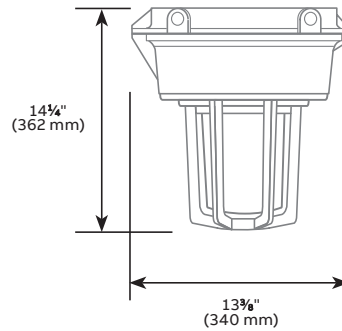
Cone-top pendant

7.3 kg | 16 lbs



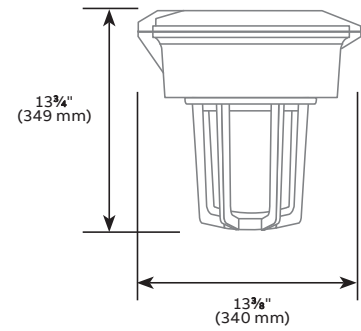
Ceiling and pendant mount

7.3 kg | 16 lbs



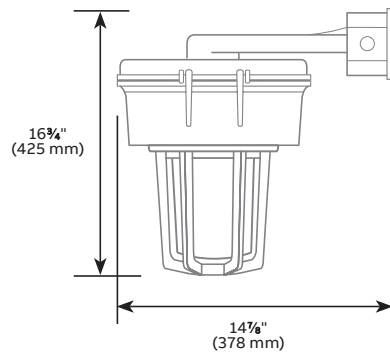
Pendant mount

6.8 kg | 15 lbs



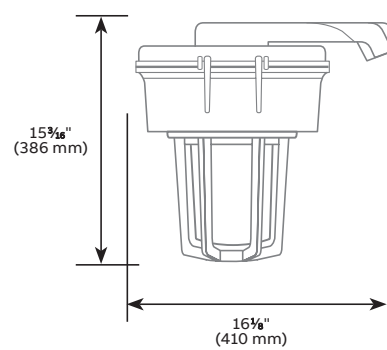
Wall mount

9.1 kg | 20 lbs



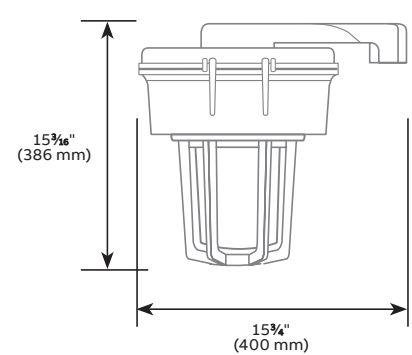
25° Angle stanchion

7.3 kg | 16 lbs



Straight stanchion

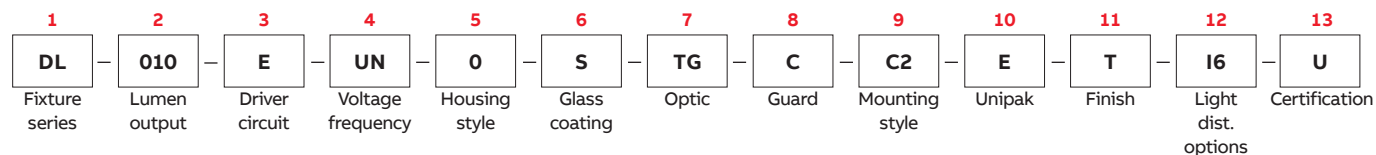
7.3 kg | 16 lbs



Hazlux® H3 LED Series

NUMBERING SYSTEM

Unipak™ = LED driver tank + optics and mountings + options (if necessary)



LED driver tank

Part	Part number	Description
1 Fixture series	DL	Hazlux H3 gen 2
2 Lumen output	005	5,600 lumens, 37 W
	007	7,500 lumens, 48 W
	010	10,500 lumens, 74 W
	015	15,800 lumens, 103 W
	017	17,300 lumens, 115 W
	020	20,100 lumens, 138 W
3 Driver circuit	E	Electronic LED driver with dimming 0–10 VDC
4 Voltage / Frequency	UN	Universal 120–277 VAC 50/60 Hz (voltage range includes 208V, 220V, 240V etc.)
	UN2	Universal 347–480 VAC 50/60 Hz
5 LED driver housing style	O	Standard housing
	S	Standard housing with stainless-steel insert

Optics

Part	Part number	Description
6 Glass coating	Blank	No teflon coating
	S	Teflon coating ¹
7 Optic	TG	Thermal shock-resistant glass globe
	R1	Type I glass refractor globe
	R3	Type III glass refractor globe
	R5	Type V glass refractor globe
	CUT	Dark sky cut-off polycarbonate flat lens ^{1,2}
8 Guard option	Blank	No guard
	C	Cast aluminum guard ³
	L	Polymeric guard ³

¹ Teflon coating NOT applicable to CUT.

² CUT optics: 3000K < CCT for dark sky. Cannot be used with stanchion mount. Not suitable for Class II, Division 1

³ Cannot be used with CUT

Mounting

Part	Part number	Description
9 Mounting style	A2	¾" Cone-top pendant
	A3	1" Cone-top pendant
	B2	¾" Wall mount
	B3	1" Wall mount
	C2	¾" Ceiling mount / pendant
	C3	1" Ceiling mount / pendant
	HV3	Hazvertor™ adaptor ring Crouse-Hinds® ceiling, pendant ² and straight stanchion top hats ¹
	HV4	Hazvertor™ adaptor ring stanchion angle mount ¹
	HV5	Hazvertor™ adaptor ring wall mount ¹
	L4	1¼" Straight stanchion
	L5	1½" Straight stanchion
	P2	¾" Rigid pendant
	S4	1¼" 25° Angle stanchion
	S5	1½" 25° Angle stanchion
	Blank	No mounting (to replace existing fixt.)
10 Unipak	E	(Standard, Unipak with LED lamp)

¹ HV3, HV4 and HV5 hazvertors are CSA/CSAus certified

Options

Part	Part number	Description
11 Finish	Blank	Ivory
	G	Gray
	T	Hazcote® black custom anti-corrosion coating (consult ABB rep) ¹
12 Light distribution options	I3	Internal reflector 35° beam angle ²
	I4	Internal reflector 45° beam angle ²
	I6	Internal reflector 65° beam angle ²
	Blank	5000K
	K30	3000K ¹
	K35	3500K ¹
	K40	4000K ¹
13 Certification	U	U.S market
	Blank	Canadian market

¹ Option subject to extended lead time.

² DL005, DL007 and DL010 only, maximum 40°C (104°F) ambient temperature, cannot be combined with refractors and CUT. Cannot be added in the field.