

## TECHNICAL DATA SHEET

**PMA Accessories - PMACUT - Cutting Tool**

Cutting tool for PMA conduits, NW 56 - 125

**PMA****CE UK  
CA****Features & Benefits:**

- Solid construction
- Easy handling
- Can be used to cut PMA conduits with large nominal widths
- Enables a precise and straight cut at the top of the corrugation
- High level of safety through retractable blade

**Materials:**

- Aluminium

**Compatible with:**

- All PMA conduit types

**Product selection:**

Part no.		Conduit size	Dimensions in mm (nom.)				Weight	Packing unit
cutting tool	replacement blade	NW	A	B	C	D	g/pcs	pcs/PU
PMACUT-NW56	PMACUT-NW-RB	56	337.0	101.0	68.0	15.0	397	1
PMACUT-NW70	PMACUT-NW-RB	70	350.0	110.0	80.0	15.0	415	1
PMACUT-NW95	PMACUT-NW-RB	95	400.0	142.0	107.0	20.0	804	1
PMACUT-NW125	PMACUT-NW-RB	125	443.0	182.0	148.0	20.0	1051	1

Our customer service dept. or local distribution partner will be pleased to help you concerning product availability and lead time

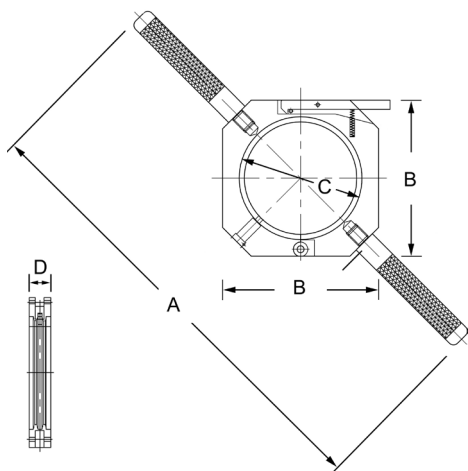


ABB Switzerland Ltd,  
PMA Cable Protection  
Aathalstrasse 90  
8610 Uster, Switzerland  
Phone: +41 58 585 00 11  
pma-info@ch.abb.com  
www.pma.ch

Let's write the future.  
Together. **abb.com**

We reserve the right to make technical changes or modify the contents of this document without prior notice. With regard to purchase orders, the agreed particulars shall prevail. ABB Installation Products Inc. does not accept any responsibility whatsoever for potential errors or possible lack of information in this document.

We reserve all rights in this document and in the subject matter and illustrations contained therein. Any reproduction, disclosure to third parties or utilization of its contents – in whole or in parts – is forbidden without prior written consent of ABB Inc. Copyright© 2019 ABB Installation Products Inc. All rights reserved

