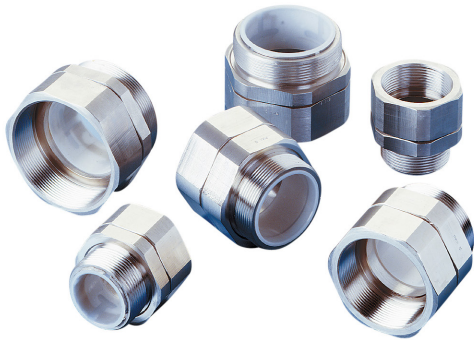


## TECHNICAL DATA SHEET

# PMA Accessories - SWA-P - Metal Swivel-Adapter

## IP68 & IP69, PG thread

**PMA****Applications:**

- In connection with PMA fittings with metal thread

**Features & Benefits:**

- Allows PMA fittings to swivel freely in applications where such movement is occasionally necessary
- With thread edge protection

**Ingress protection:**

- IP69 / IP68

**Materials:**

- Nickel-plated brass (other materials e.g. stainless steel available on request)

**Compatible with:**

- PMAFIX Pro & PMAFIX metal thread fittings

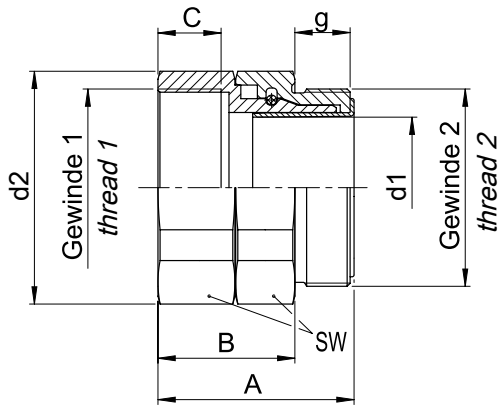
**Environmental properties:**

- Free from halogens and cadmium
- RoHS and REACH compliant

Product selection:

Part no.	Thread size		Dimensions in mm (nom.)							Weight	Packing unit
	PG (thread 1)	PG (thread 2)	g	d1	d2	SW	A	B	C	kg/100 pcs	pcs/PU
SWA-P09	PG09	PG09	15.0	7.0	23.0	21.0	44.5	28.5	13.0	7.0	1
SWA-P11	PG11	PG11	15.0	10.5	27.0	25.0	45.5	29.5	13.0	8.8	1
SWA-P16	PG16	PG16	15.0	14.5	32.0	30.0	48.0	32.0	14.0	12.0	1
SWA-P21	PG21	PG21	15.0	18.0	40.0	36.0	51.0	35.0	15.0	18.4	1
SWA-P29	PG29	PG29	15.0	26.0	50.0	46.0	52.0	36.0	15.0	27.6	1
SWA-P36	PG36	PG36	15.0	35.5	59.0	55.0	55.0	39.0	18.0	33.3	1
SWA-P48	PG48	PG48	15.0	45.0	70.0	65.0	55.0	39.0	18.0	39.8	1

Our customer service dept. or local distribution partner will be pleased to help you concerning product availability and lead time



Thermal properties:	Value:	Test parameters:	Test method:
Continuous application temperature	-50 ... +105°C		PMA DO 9.21-4510

Fire safety properties:	Value:	Test parameters:	Test method:
Rotational test with lateral forces	> 10'000 rotations		

Rotation characteristics and IP rating were not affected during testing

For applications (robotics) involving frequent/fast movements we recommend a swivel adapter with ball bearings

**Content of delivery:**

- Complete adapter with special sealing and thread edge protection
- Thread gasket for internal thread
- Flat gasket for external threads (SVN4)
- O-ring

**Assembly instructions:**

- Please consider the appropriate assembly instructions on [www.pma.ch](http://www.pma.ch)

This component provides no electrical continuity

ABB Switzerland Ltd,  
PMA Cable Protection  
Aathalstrasse 90  
8610 Uster, Switzerland  
Phone: +41 58 585 00 11  
[pma-info@ch.abb.com](mailto:pma-info@ch.abb.com)  
[www.pma.ch](http://www.pma.ch)

Let's write the future.  
Together. **abb.com**

We reserve the right to make technical changes or modify the contents of this document without prior notice. With regard to purchase orders, the agreed particulars shall prevail. ABB Installation Products Inc. does not accept any responsibility whatsoever for potential errors or possible lack of information in this document.

We reserve all rights in this document and in the subject matter and illustrations contained therein. Any reproduction, disclosure to third parties or utilization of its contents – in whole or in parts – is forbidden without prior written consent of ABB Inc. Copyright© 2019 ABB Installation Products Inc. All rights reserved

