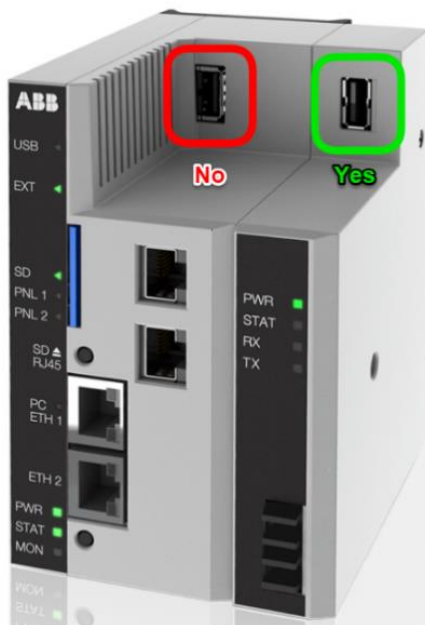


## Installing Yocto-Meteo Sensor to NETA-21

### 1. Connect the Yocto-Meteo sensor to NEXA-21 module's USB port

The sensor has to be connected to the NEXA-21 module's USB port, because currently the USB port on NETA-21 won't recognize it.

NETA-21 should be powered up with the connected sensor, or otherwise it needs to be rebooted after the sensor is connected.



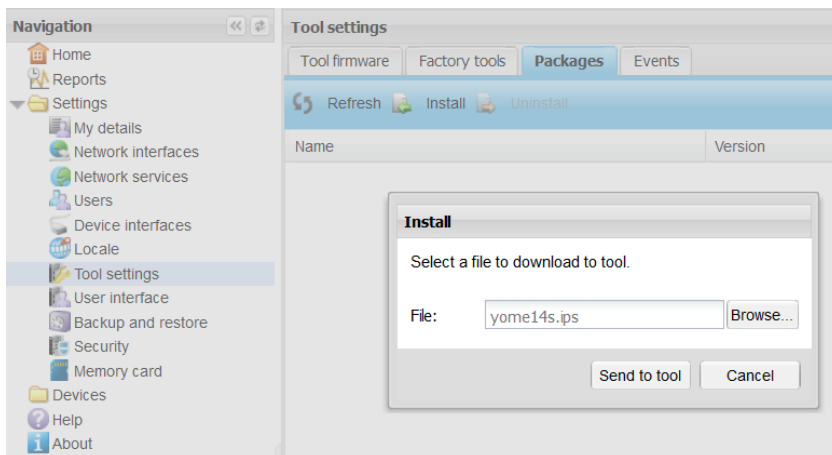
### 2. Check that the sensor communicates with NETA-21

If the sensor communicates with NETA-21 correctly, the blue led of the sensor will continuously light up and slowly fade away.

### 3. Install the Yocto-Meteo sensor handling package to NETA-21

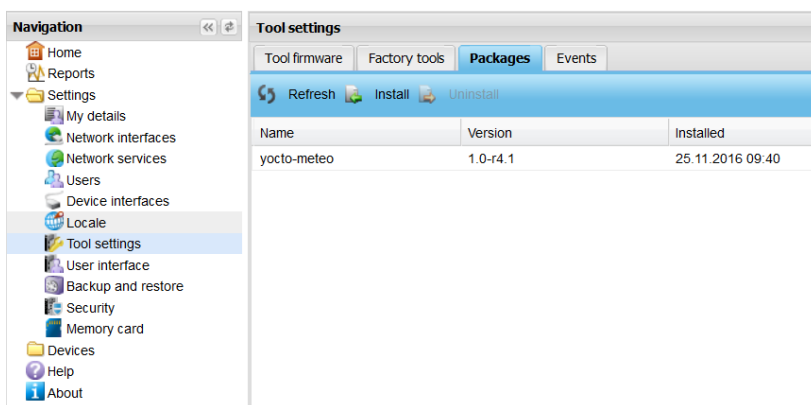
The latest Yocto-Meteo install package can be obtained from the Remote Monitoring Sharepoint. Currently the latest available version is called **yome15s.ips**.

The package is installed just like any other ips package. Go to **Settings / Tool settings / Packages** and press **Install** button. In the dialog select the package to load and press **Send to tool** button.

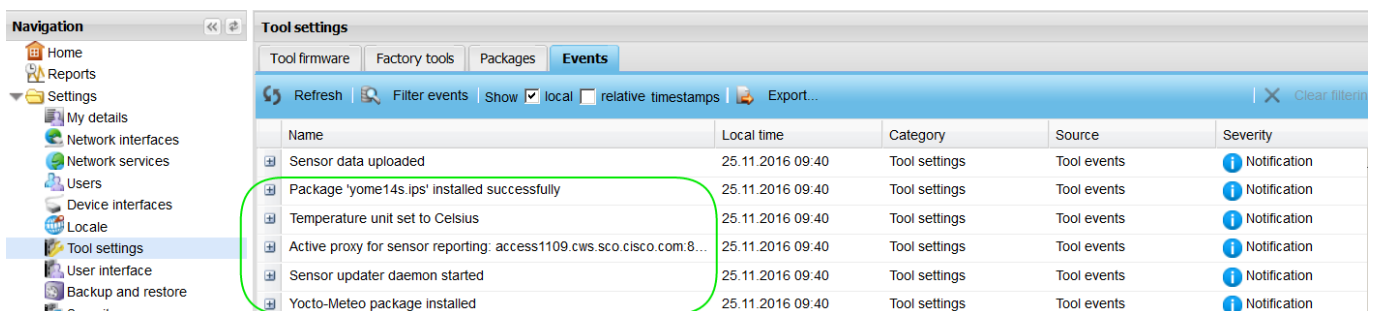


#### 4. Check that the package installed correctly

Installation should not take long and if succeeded, the installed sensor package should appear in the installed packages list.



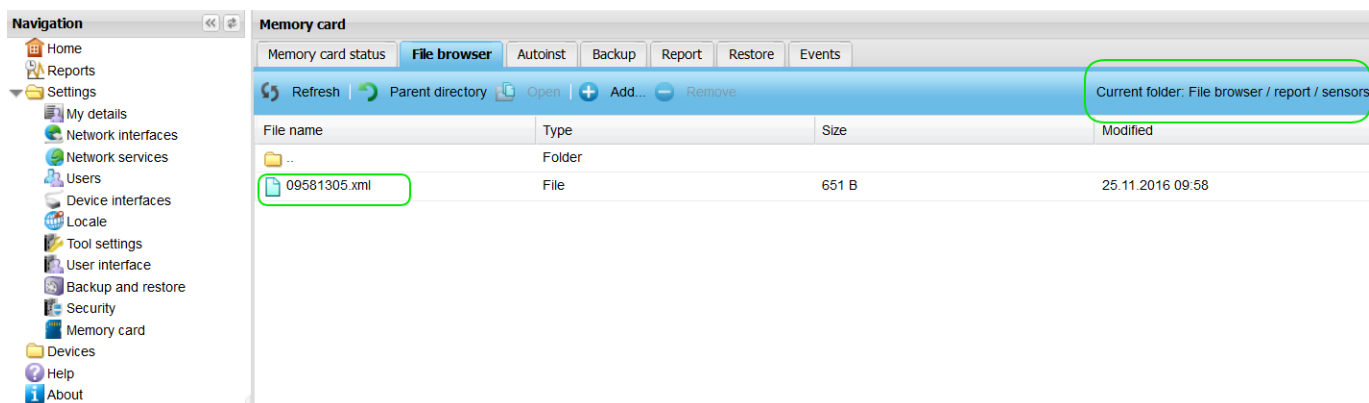
There should be some events in the Events list as well. On successful installation, the event log should show similar messages:



#### 5. Check that sensor data is sent to the Cloud

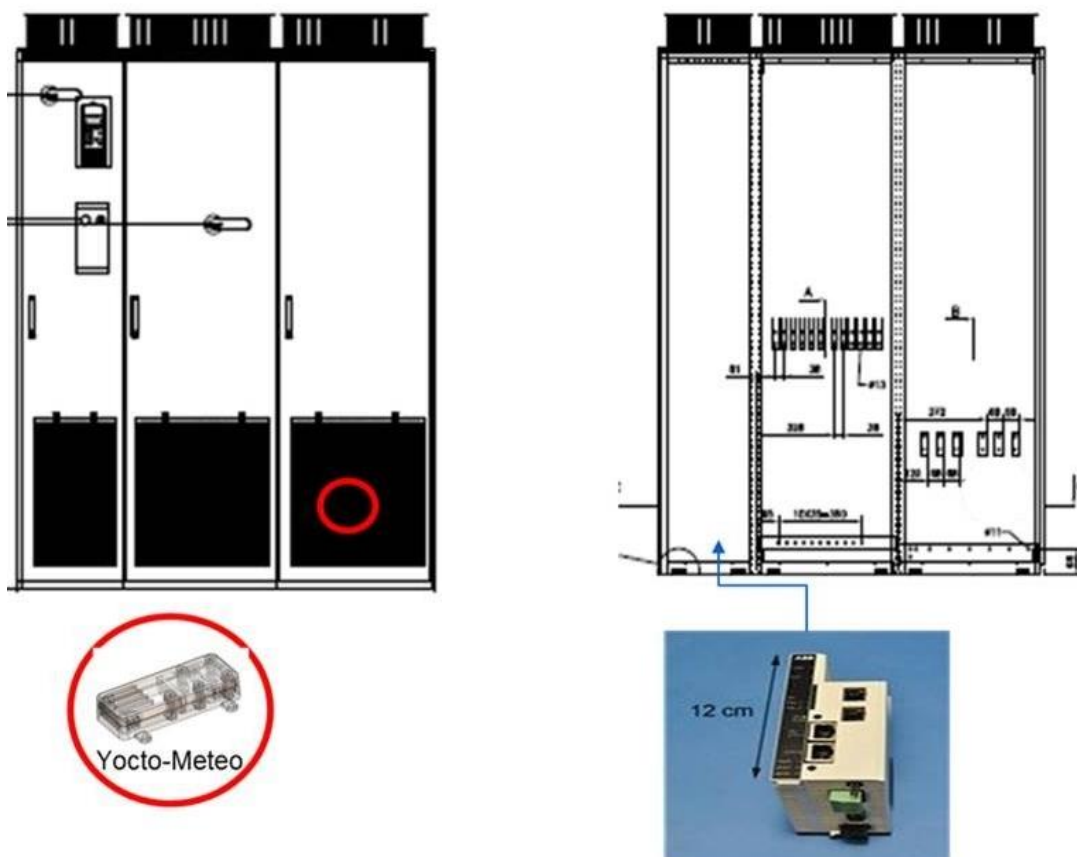
If connection to the Internet / Cloud is working, the event log will also display "**Sensor data uploaded**", otherwise the message will be "**Uploading sensor data failed**".

The unsent measurements, in the form of \*.xml files, would be waiting on the SD card, in the **report / sensors /** directory. When connection to the Internet is established/recovered, those files would be uploaded to the Cloud and deleted from the SD card.



## 6. Recommended locations for NETA-21 and Yocto-Meteo sensor

The Yocto-Meteo sensor is placed near the air inlet of the drive. For example on multidrives the sensor is placed on the air inlet of one of the parallel connected modules.



For optimal performance, please consider the following suggestions:

- Fasten the sensor e.g. with a cable tie. Do not use glue.
- Install the sensor so that air can freely reach the sensor plate. Find the small holes on the top of the sensor.
- Fasten the cable inside the cabinet.
- Be careful with cables and lead-ins for cabinets used in harsh environments.