

Disaster Recovery

ABB Electrification Services



ABB Electrification Services team has the experienced resources, capabilities, and products to provide a total response when disaster strikes.

Resources

When your property and business operations are impaired by natural disasters, you need a responsive solutions provider with experienced technical resources you can trust. ABB's expansive network of engineers, technicians and craft labor delivers fast, efficient and comprehensive solutions to help return your business to full working order.

Field Engineering Services

- Electrical engineers with expertise in a wide range of products and industries
- Over 125 years' experience in electrical products and services
- Consulting services and technical direction for maintenance and repair
- Field engineering, project management and craft labor for modifications and emergencies
- Local resources backed up by a global organization

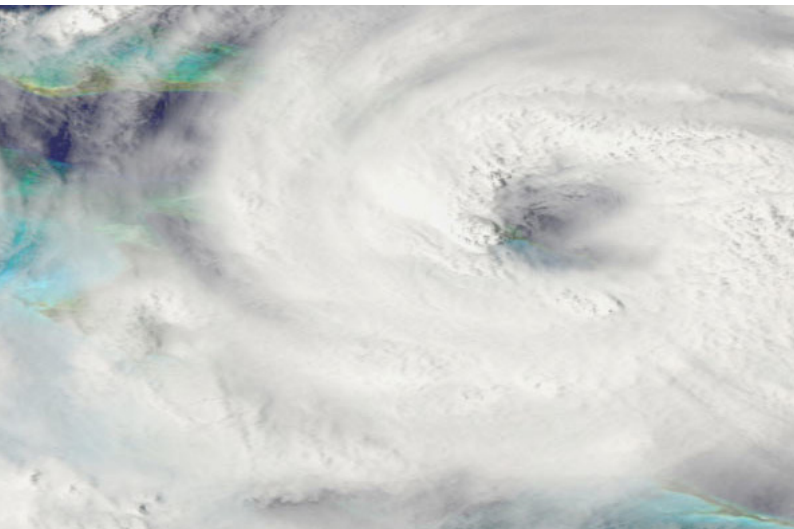
Repair Services

- Service center network providing expert repair services both on-site and in-shop
- Switchgear – testing, repair, modernization and upgrades

- Transformers – testing, repair, remanufacture, dielectric fluid analysis & corrective treatments
- AC/DC Motors – diagnostic testing, repair and new replacements
- Mechanical Systems – optical alignment, vibration analysis, non-destructive testing, component remanufacturing, upgrade and on-site machining services

Capabilities

- Equipment Condition Assessments
- Recommendations for repair/replace
- Repair coordination
- Test equipment
- Multi-Vendor capabilities
- Specify/Source replacement equipment
- Expedited manufacturing for built-to-order equipment
 - Engineering Support
 - Technical Direction
 - Craft Labor
 - Communication Command Center
 - Installation, Start-up and Commissioning
- Emergency Repair



Products — Electrical Equipment

ABB's nationwide network of authorized electrical distributors with more than 1500 locations provides an extensive inventory of stock products for same day delivery service. Stock products and components include:

- Safety Switches
- Transformers
- Lighting Panels
- Breakers
- Control Products
- Residential Products
- Temp Power Pedestals

Also, ABB can manufacture and deliver new electrical equipment on an emergency basis should the need arise. We maintain a library of project equipment drawings to enable us to manufacture to the original specification.

How quickly can we respond? It's difficult to provide firm delivery commitments due to the many variables involved. However, in previous disaster recovery situations, when the product ordered was identical to a previous or existing order, ABB was able to deliver the following products in as little as 8-9 weeks:

- Medium/Low Voltage Switchgear
- Medium/Low Voltage MCC's
- Secondary Substation Transformers

—

ABB Electrification Industrial Solutions — quality products and services, strong project management expertise, broad multivendor service offerings and a global network of repair facilities, field engineers and technicians.

Contact us:

For more information, call us toll free at +1 888 434 7378, or +1 540 387 8617 and visit us on the web at go.abb/industrial

ABB Inc.
2018 Powers Ferry Rd
Atlanta, GA 30339, US

go.abb/industrial

We reserve the right to make technical changes or modify the contents of this document without prior notice. With regard to purchase orders, the agreed particulars shall prevail. ABB AG does not accept any responsibility whatsoever for potential errors or possible lack of information in this document.

We reserve all rights in this document and in the subject matter and illustrations contained therein. Any reproduction, disclosure to third parties or utilization of its contents – in whole or in parts – is forbidden without prior written consent of ABB AG. Copyright © 2019 ABB
All rights reserved