
BROCHURE

Cable Tray Cost Advantage

Savings without compromise



Cable Tray Cost Advantage

Savings plus increased productivity

At the beginning of a project, costs and product features are assessed based on the best possible solution for the wire and cable management needs. Project scope and cost are central in the evaluation process. Thomas & Betts offers a wide variety of quality cost-saving products that not only simplify installation but also reduce material costs.

—
01 Aluminum
Straight Section
—
02 Helix Cable
Tray Fitting

Aluminum Cable Tray

- Ladder, ventilated or solid tray in copper-free aluminum
- Large-radius aluminum tray offers custom support for tanks and towers
- Extra-long span 30' (9.14 meters) ladder tray
- H-Beam side rail profile features a unique flange-out design for easy cable access
- Factory-punched square holes and carriage bolt combination on siderails allows for easy, one-tool installation
- Extra-wide rung maximizes load-bearing surface, minimizing deflection
- Continuous strut profile rung accepts standard strut accessories
- Alternating rungs facilitate installation of accessories from top or bottom

Helix™ Cable Tray Fitting

Making transitions from horizontal to vertical cable trays runs has never been easier or more efficient.

The latest evolution in cable tray fittings, the Helix™ fitting assembly was developed specifically for use in confined areas and allows installers to transition from horizontal to vertical surfaces in less time, using significantly less space.

- Enables installation close to walls and other surfaces, eliminating need for distance
- Provides enhanced cable protection in confined spaces
- Secures cables within fitting for clean, organized cable runs



—
01



—
02

Over-Support Splice Adaptor

- Originally designed for modular aluminum system assemblies
- Supports are placed right under the joints on beams and struts
- Allows wider distribution of support, minimizing stress and deflection of the system
- No additional supports required

Snap-In Splice Plate™

- Snaps into place for easy alignment and quick, hands-free installation
- 7" (177.8 mm) wide or 9" (228.6 mm) expansion splice
- Supplied standard with each straight length

Super-Duty Splice Plate™

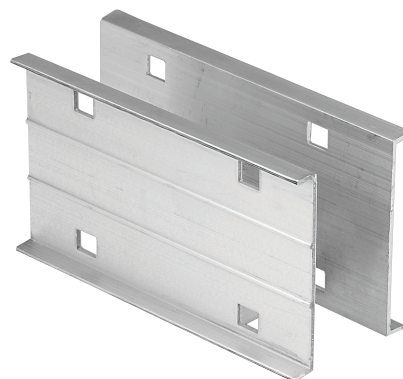
One splice place, two solutions

The new robust Super-Duty Splice Plate allows cost-efficient expansion by reducing the need for structural supports. It can also be used for sturdy mid-span splicing. Engineers, end users and contractors benefit from significant cost reductions without sacrificing quality or structural integrity.

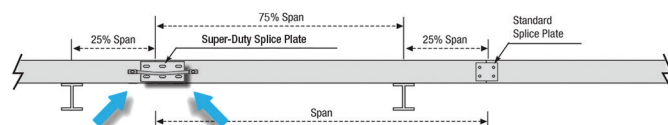
- Enables use of fewer NEMA-recommended structural supports at the expansion joint, significantly reducing project material and labor costs
- Unique, reinforced design eliminates the need to drill and install additional hardware on the flange, saving time during installation
- Nylon washers make movement easier and reduce friction. No lubrication of the side rail required during installation or maintenance
- Expansion splicing with the Super-Duty Splice Plate™ eliminates the need for additional NEMA-recommended supports



01



02



03



—

ABB Inc.

Low Voltage Products
Memphis, Tennessee
USA

new.abb.com/low-voltage

