

Firmware Update

ETS APP Firmware – Update 2.0

BUILDING & HOME AUTOMATION SOLUTIONS

Doc.-Type: Step-by-Step Guide	Doc.-Nr. 9AKK107045A3018	Doc.-Version: 1
Department: BHAS Engineering Team	Author: Arno Reinmuth	
System: i-bus KNX	Product: App - ABB KNX Bus Update from ETS 5	
Page: 1/6	Date: 15.11.2021	



Liability Disclaimer:

This document serves the sole purpose of providing additional, technical information and possible application and use cases for the contained products and solutions. It **does not** replace the necessary technical documentation required for planning, installation and commissioning of the product. Technical details are subject to change without notice.

Despite checking that the contents of this document are consistent with the current versions of the related hard and software of the products mentioned within, deviations cannot be completely excluded. We therefore assume no liability for correctness. Necessary corrections will be introduced as and when new versions of the document are generated.

Introduction

With the help of the ETS APP "ABB Firmware Update 2.0", it is possible to update the operating systems of different ABB KNX components to the latest version without a hardware exchange.

It is becoming more and more important to keep KNX devices up to date in KNX installations. Updates constantly improve and optimize the functionality of the KNX devices.



ABB Firmware-Update 2.0
von ABB Stotz-Kontakt GmbH

The ETS App "ABB Firmware Update 2.0" is used to update the firmware of various ABB KNX devices directly via the KNX bus. The latest firmware files can be downloaded automatically from the Internet or imported manually.

The app can be used with ETS 5 or higher.

Attention: It replaces the app "KNX Bus Update".

The information, which current firmware is already available in the device, can be checked with the help of the corresponding current ETS version.

The corresponding firmware version can be read directly from the device under the menu item "Device info". An overview of which firmware version is currently valid can be found in the respective software information of the KNX device.

Objectives of the document

The target group is mainly the system integrator (planning, installing, programming).

Content

This app can be called from the ETS 5 as well as from the ETS 6.

The ABB Firmware-Update 2.0 APP is provided free of charge in the online shop. Only a licensing with the already existing ETS license is necessary there.

Where to find which license entry?

The ABB Firmware Update 2.0 APP is provided free of charge in the KNX Online Shop. However, each ETS APP must also be licensed with the respective existing ETS license before it can be used.

Afterwards, the app license provided by KNX can be inserted into the ETS via the normal installation process.

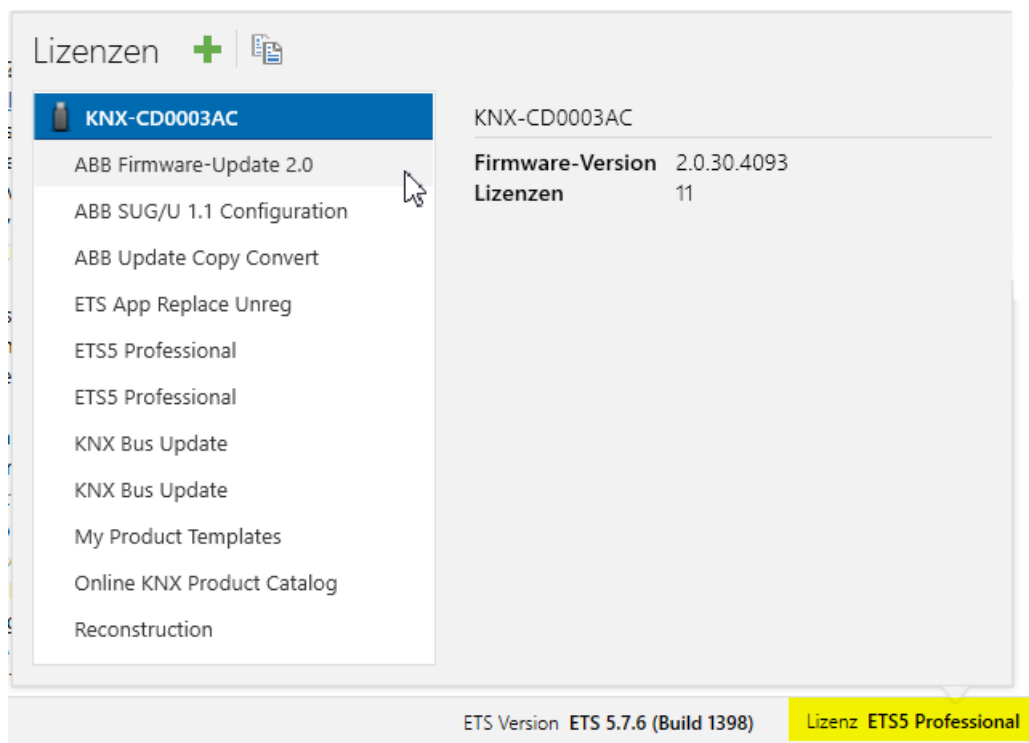


Fig.1: Licensing ETS 5

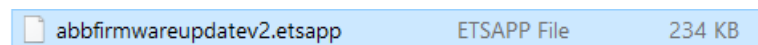
Installation of the APP software

Apps		10 active / 17 installed		
	Name	Vendor	Version	License
✓	ABB AC/S Configuration App	ABB	1.0.13.0	
✓	ABB Firmware-Update 2.0	ABB	2.0.106.0	
✓	ABB KNX Bus Update	ABB	1.0.54.0	
✓	ABB SUG/U1.1 Configuration App	ABB	1.0.32.0	
✓	ABB Touch DCA	ABB	1.1.16.0	
✓	ABB Update Copy Convert	ABB	1.0.145.0	

Fig 2: License overview

The app license provided by the KNX can be inserted into the ETS via the normal process.

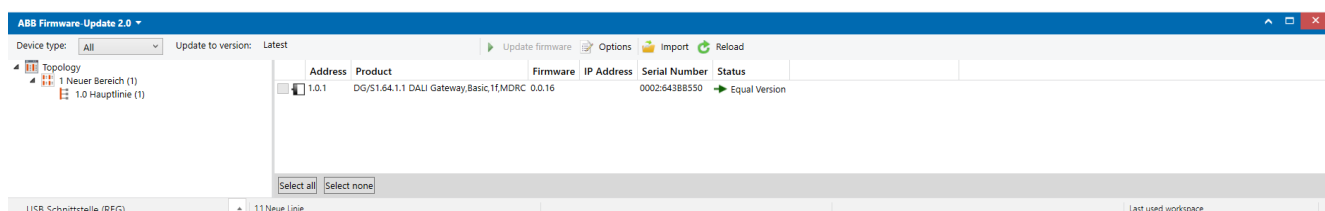
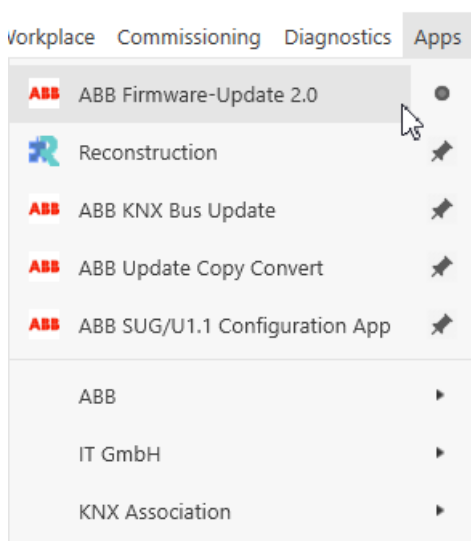
The software of the firmware update 2.0 app must also be installed separately.



After the two steps, licensing and the installation of the app software, the ABB Firmware – Update 2.0 can now be used.

Using the ABB Firmware – Update 2.0 APP

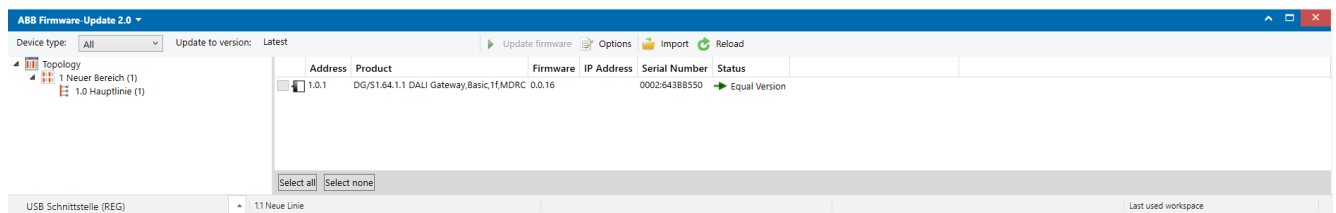
The APP can be started directly from ETS:



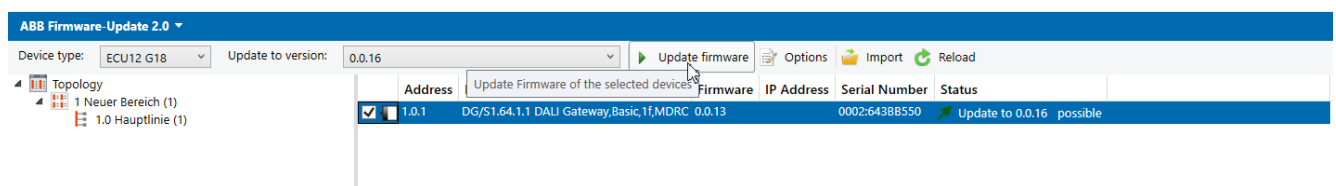
All relevant data required for updates of the various devices are already available in the APP. These are downloaded by an automatic update "default" of the ABB Firmware Update 2.0 APP. This upload always contains the latest firmware files.

Online connection before the update to compare the firmware versions provided would therefore be recommended.

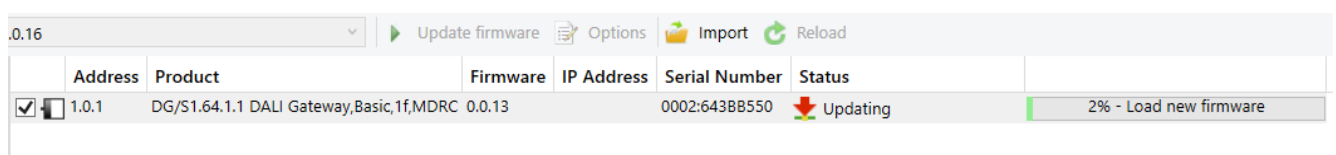
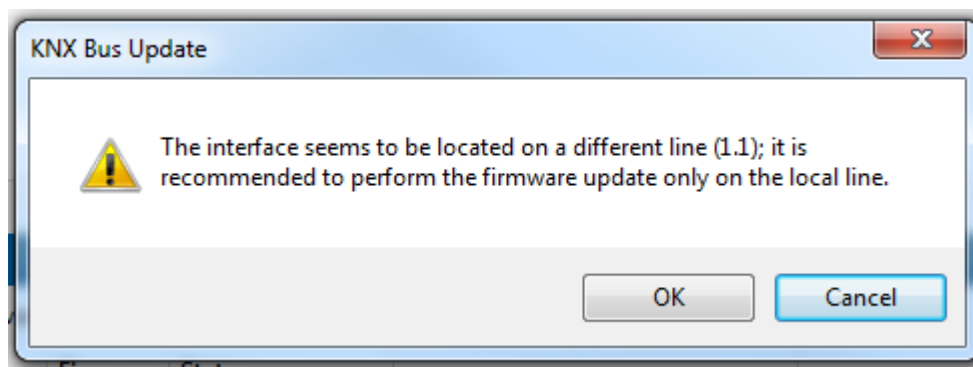
The app automatically checks the devices in the open project or affected devices.



When the scan process is finished, the firmware can be updated from previously selected devices.

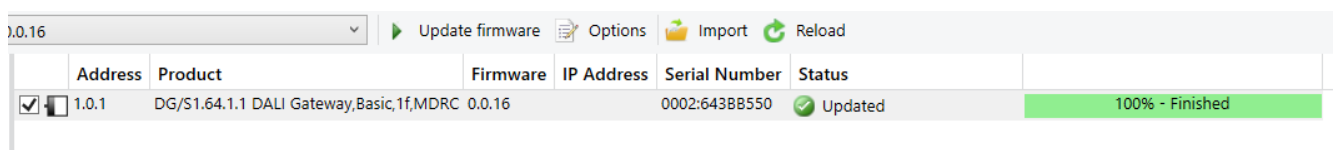


It is recommended that the update of the firmware does not run across the entire line, since the telegram load can be too high at about 80% or the update can take longer.



When an update process is started, do not close the open app and do not actively interrupt the update process, otherwise the device being updated can no longer start.

Aborted update processes can be restarted at any time!



If the communication terminates during an update, it is displayed in the tool accordingly.

However, the update can be restarted at any time.

References to other documents

- [FAQ Home and Building Automation](#)
- [Engineering Guide Database](#)