

# Conversion of an DGN/S 1.16.1 Application

## Conversion of an old application into a new

### GPG BUILDING AUTOMATION

Doc.-Type: Step-by-Step Guide

Doc.-Nr. 9AKK107045A1107

Doc.-Version: 1.1

Department: Global Support

Author: Arno Reinmuth

System: i-bus KNX

Product: DGN/S 1.16.1

Page: 1/5

Date: 08.03.2017



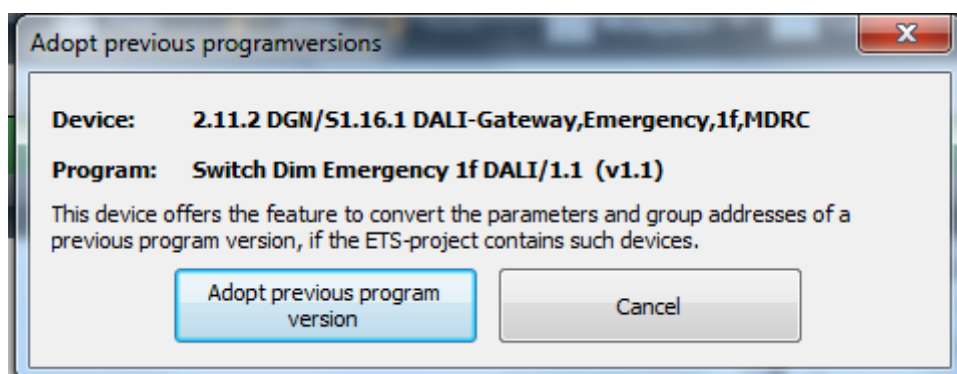
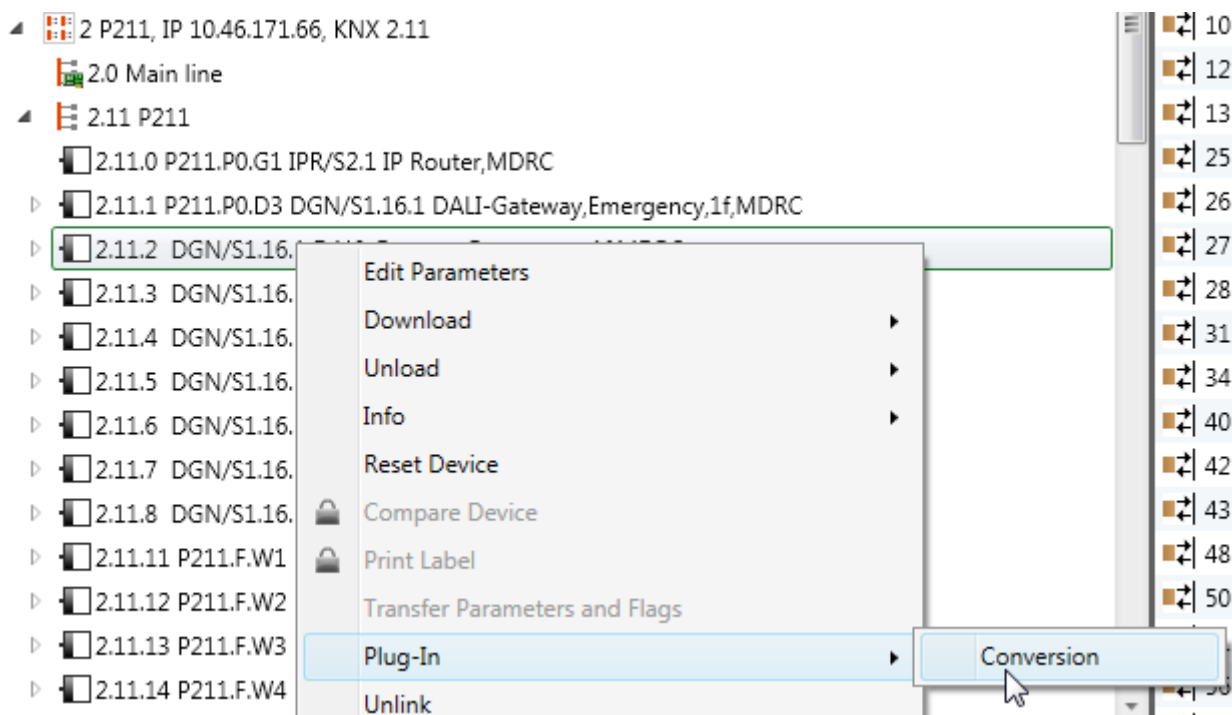
### Liability Disclaimer:

This document serves the sole purpose of providing additional, technical information and possible application and use cases for the contained products and solutions. It **does not** replace the necessary technical documentation required for planning, installation and commissioning of the product. Technical details are subject to change without notice.

Despite checking that the contents of this document are consistent with the current versions of the related hard and software of the products mentioned within, deviations cannot be completely excluded. We therefore assume no liability for correctness. Necessary corrections will be introduced as and when new versions of the document are generated.

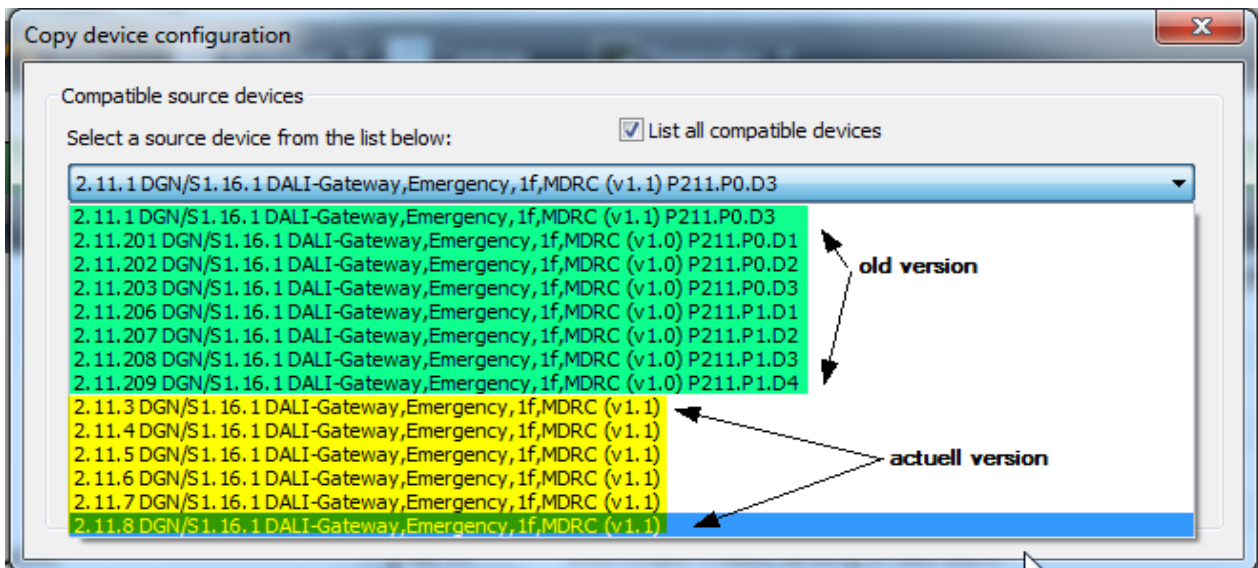
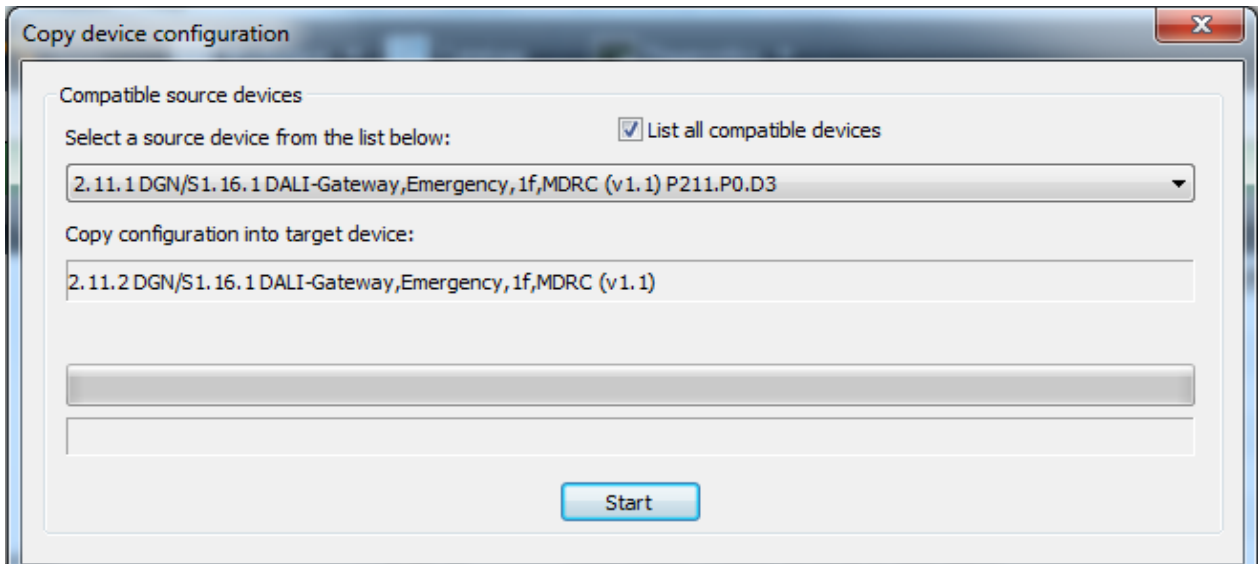


3.1. Select the new device, which is to take the data of another and press the right mouse function. Go to the context menu "Plug-In" and then on "Conversion"

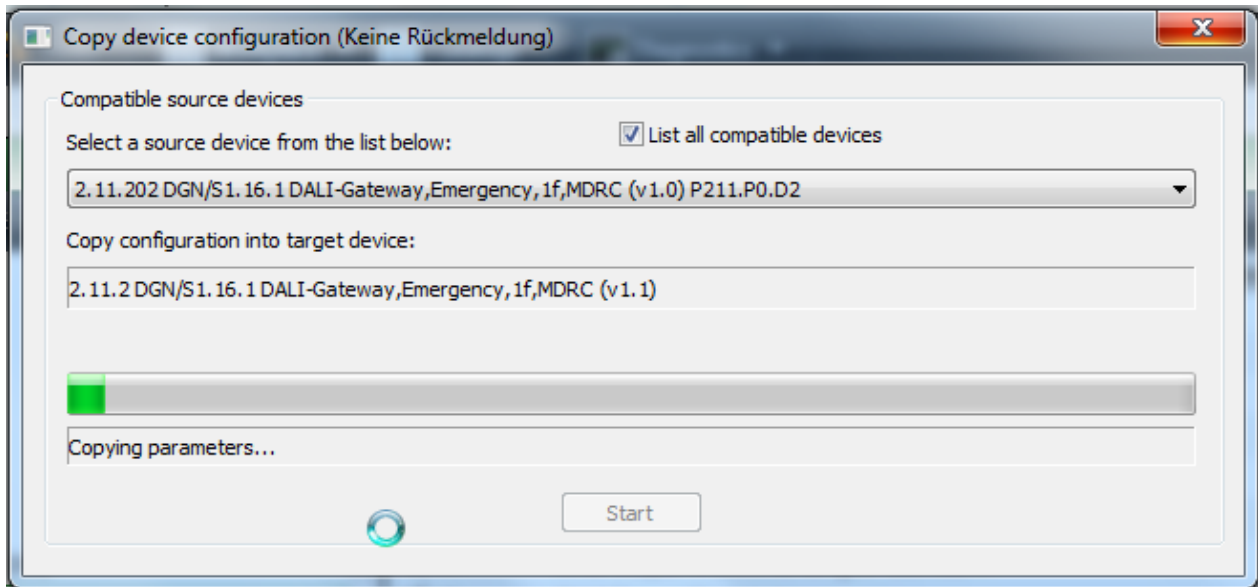


3.2. Press the button „Adopt previous program version,,

### 3.3. The Plug-In lists all the devices used in the Project, which are suitable for conversion.

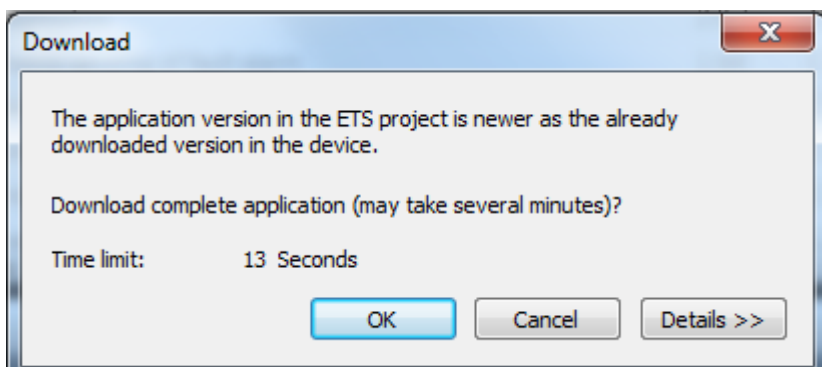


In this example, the device should be used to convert the physical address 2.11.202 in the unit 2.11.2 with the latest application version.



- 3.4. Go to "Start" and the conversion of the unit into the device 2.11.2 2.11.202 gets started.
- 3.5. In the next step, the old device 2.11.202 be either deleted or parked.
- 3.6. Thereafter, the converted unit 2.11.2 the old physical address can be assigned 2.11.202.

#### 4. Download of the converted version 1.1



After starting the download the version management is started.  
 The Full Download in the line may take about 1 minute.  
 Loading a normal application in the line takes about 40 seconds.

#### References to other documents

- [Home and Building Automation Portal](#)
- [FAQ Home and Building Automation](#)
- [FAQ DALI](#)
- [Engineering Guide Database](#)