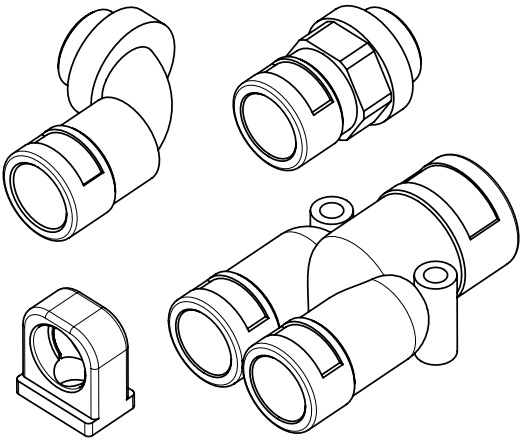


This equipment is destined for use by qualified and competent personnel in compliance with national laws and where applicable, IEC/EN 60079-14 Electrical Installations in Hazardous Areas.

**This product must not be modified in any way.
Only original parts must be used for maintenance.**



Approvals	Standards
ATEX: SEV 15 ATEX 0121X IECEx: IECEx SEV 15.0009X	EN 60079-0:2012 +A11:13, 60079-7:2015, 60079-31:2014 IEC 60079-0:2011, 60079-7:2015 ed 5.0, 60079-31:2013

The products have been designed and manufactured in compliance with the above standards, to the following protection levels:
Ⓔ II 2 GD Ex eb IIC Gb Ex tb IIIC Db
XESX02-03 -5°Cto +85°C
XESX04-09 -20°C to +85°C

Instructions

This equipment is only suitable for use with Ex eb enclosures.

Ex eb Threaded Entries - Ensure a suitable sealing method is used and tighten fitting to enclosure using correct sized wrench

Ex eb Unthreaded Entries - Ensure a suitable sealing method is used and secure fitting using correct locknut and wrench.

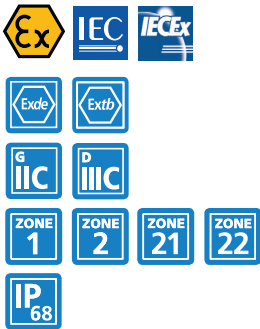
Installation Torque

see PMA Info 35
available on webpage in download section

Special Notes

Conduit Systems should be properly supported to prevent pulling and twisting which may damage the integrity of the system, BEH conduit clips can be used to secure the conduit as required.

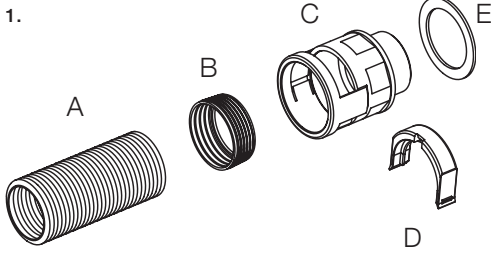
Approvals



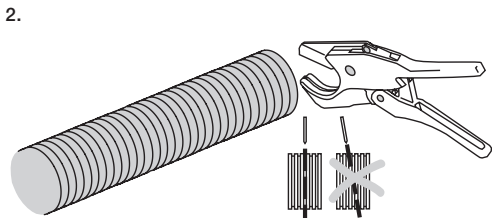
Maintenance

The inspection of this equipment should be included in the routine maintenance and inspection of the equipment to which it is installed.

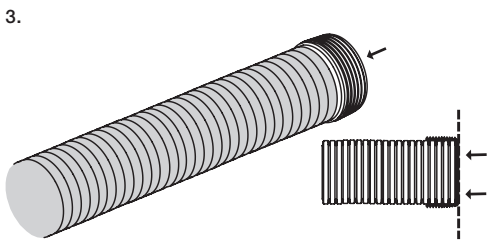
Instructions Fitting Installation



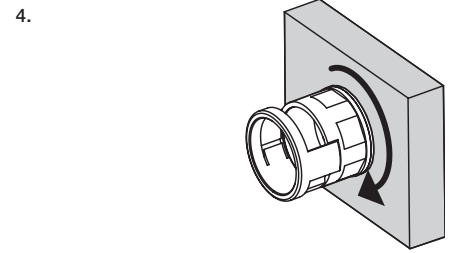
- A. Conduit
B. Ex Seal cap (yellow)
C. Fitting
D. Oval clip
E. Thread seal (O-ring or flat seal)



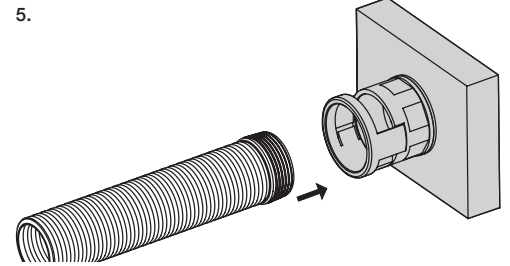
Straight cut of conduit (A).



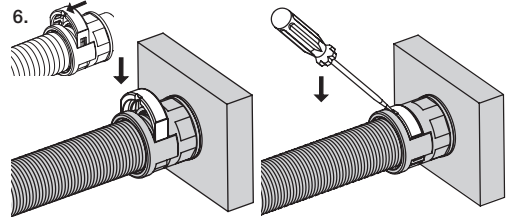
Push seal cap (B) completely onto conduit in order to achieve IP68.



Place seal (E) onto fitting thread (C) and screw in



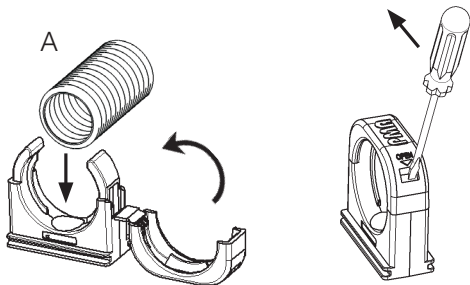
Push conduit with seal cap (A+B) into the fitting until seal cap is no more visible in the locking element window.



Insert oval clip (D) in the locking element window and click into place. The screwdriver slot must point towards the conduit. To re-open use a screwdriver. .

MONTANL RPM - 458

Instructions BEH System support Installation



Insert conduit (A) in to the System Support and close the lock. To re-open use a screwdriver.

Contact us

ABB Switzerland
PMA Cable Protection
Aathalstrasse 90
CH-8610 Uster

Tel: +41 /58 585 00 11

www.pma.ch

ABB will take no responsibility for any damage, injury or loss caused where products have not been installed or used as detailed in these instructions. If in doubt, further advice can be obtained from our Technical Department
RPM - 458