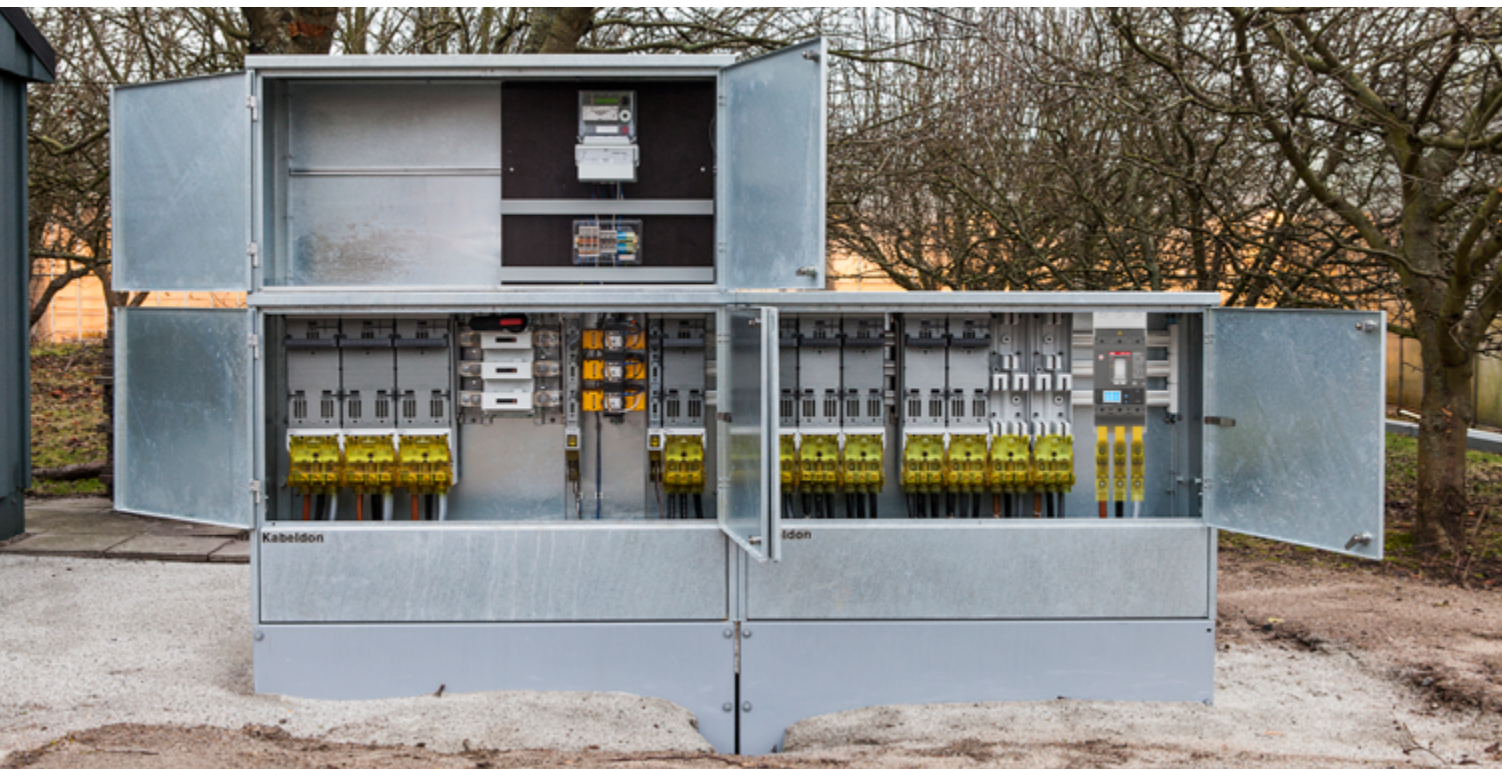


ABB KABELDON

# Tmax XT adapter plates for Kabeldon IP system

Safe, simple and fast installation



Kabeldon IP-system has been further enhanced thanks to the Tmax XT adapter plate, providing you a low voltage distribution system with high flexibility.



## Safety and protection

Product is touch-safe from all angles, basically eliminating electric shock hazards



## Easy to install

Intuitive and well proven interface that is easy to overview.  
No plug-in kit needed which will make installation much faster and easier.



## Optimum interface

Full connectivity and communication capabilities for Kabeldon IP20 system.



[link to web page](#)

## Kabeldon Low Voltage Distribution System

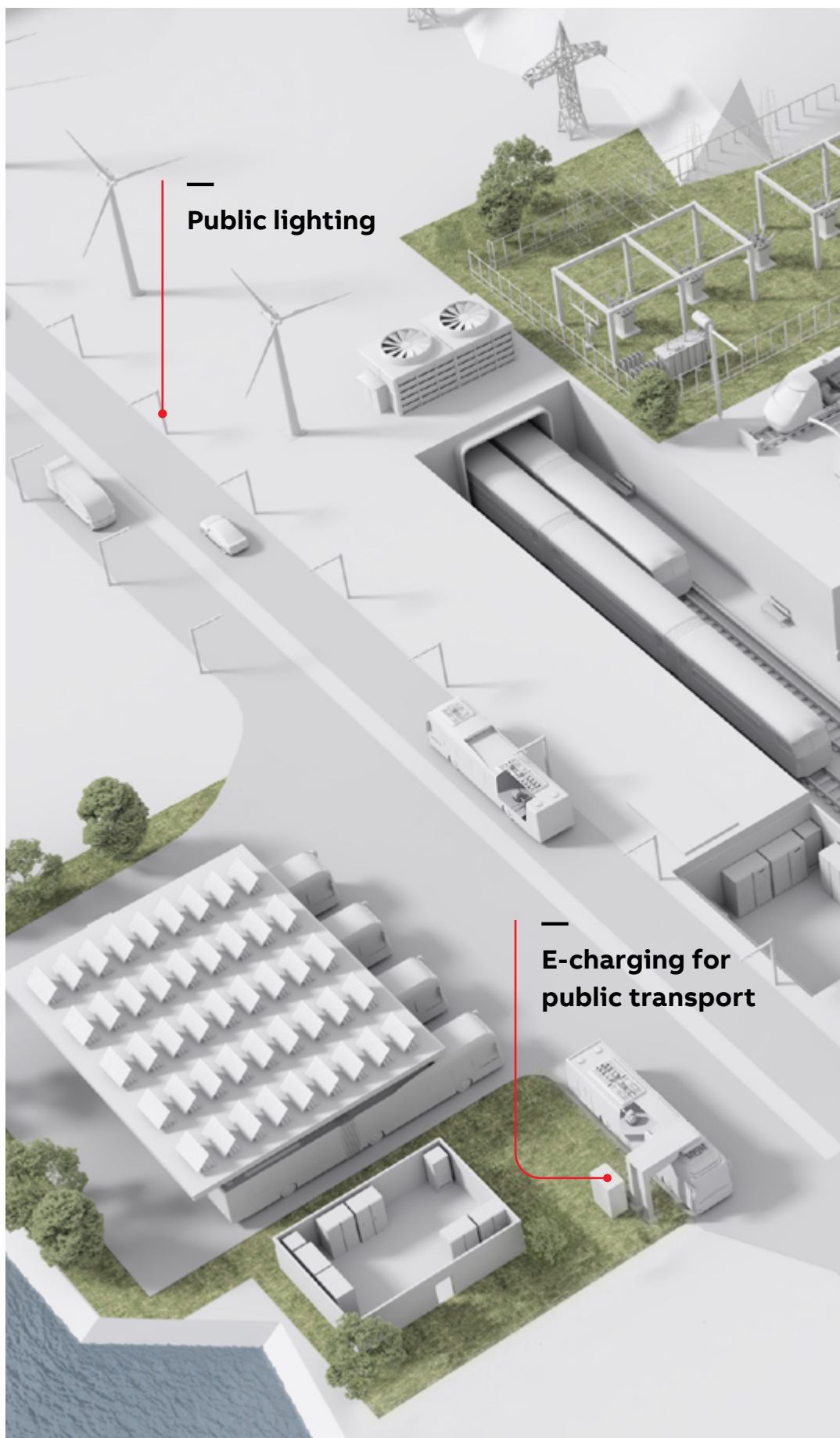
Safe and reliable electrical distribution

### Typical applications for Kabeldon low voltage distribution systems

The Kabeldon low voltage distribution system is a flexible system that can be used for a variety of applications, most often in public outdoor environments. It is an essential part of the electrical distribution infrastructure, which sets high demands in terms of reliability and continuous operation.

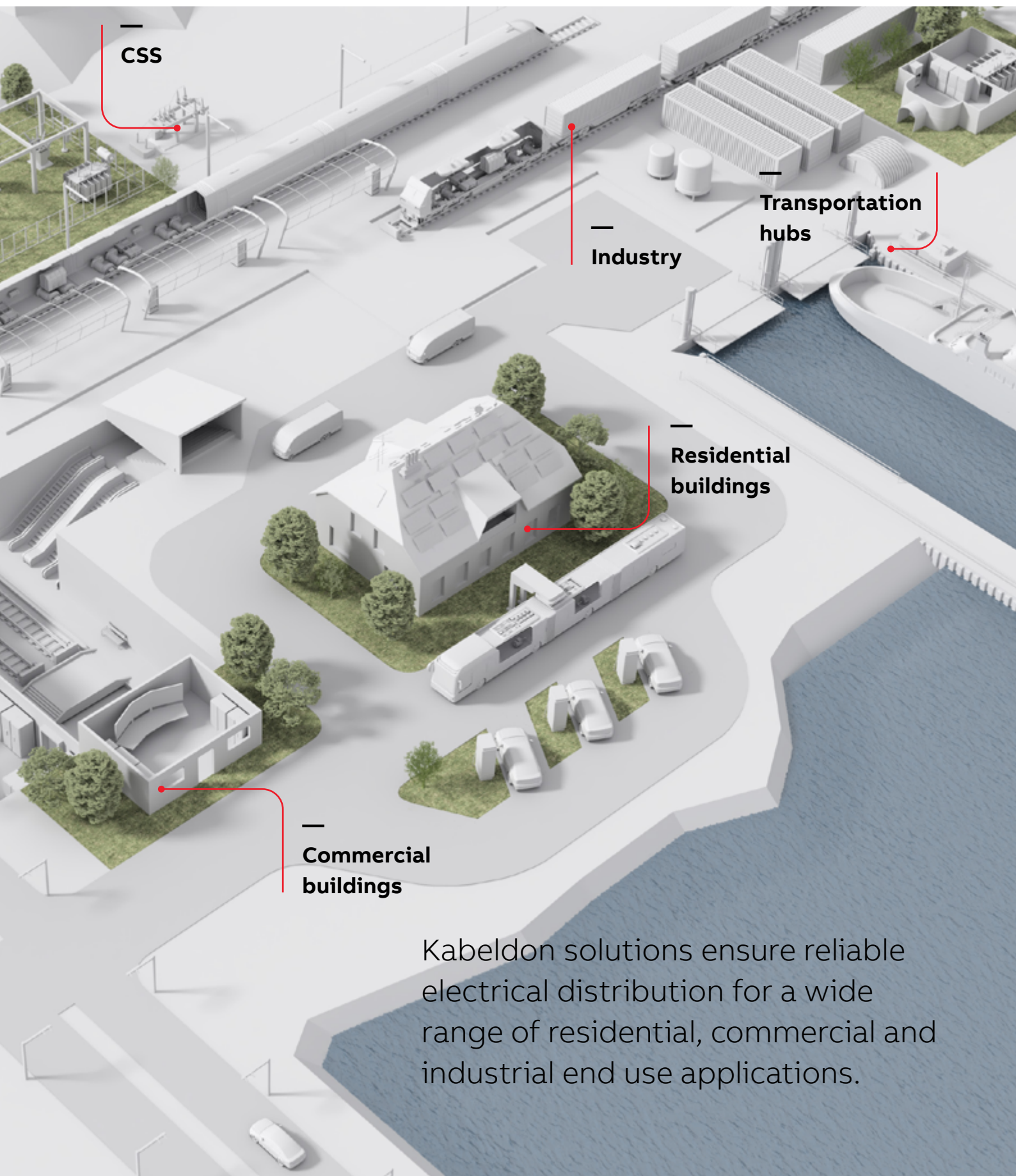
#### Examples of typical applications for the system include:

- Electrical supplies for buildings such as hospitals, hotels, shopping malls etc.
- Utility low voltage distribution networks
- Feeding pillars for electrical vehicle charging stations
- Main distribution boards for various types of industries
- Street and road lighting supplies
- As the low voltage part of Compact Secondary Substations



Public lighting

E-charging for public transport



—  
**CSS**

—  
**Industry**

—  
**Transportation  
hubs**

—  
**Residential  
buildings**

—  
**Commercial  
buildings**

Kabeldon solutions ensure reliable electrical distribution for a wide range of residential, commercial and industrial end use applications.

## Tmax XT adapter plates and connection kits

The Kabeldon IP-system consists of a unique, touch-proof busbar system which is combined with a broad range of switching devices and connections.

Now the Kabeldon IP-system has been further enhanced thanks to the Tmax XT adapter plate, providing you a low voltage distribution system with high flexibility.

### Tmax XT adapter plates

The Tmax XT adapter plates are designed for mounting the Tmax XT circuit-breakers into the Kabeldon IP distribution system. We can now offer an adapter plate for the following range of breakers:

- 3 pole for XT1, XT2, XT3, XT4 and XT5
- 4 pole for XT2, XT4 and XT5
- Motor operated XT2, XT4 and XT5

### Features of Tmax XT adapter plate

Adapter plate for circuit-breaker type Tmax XT1, XT2, XT3, XT4 and XT5.

- One adapter plate which fits several sizes of breakers (valid for APXT 1-4).
- Degree of protection IP2X.
- No need for breaker plug-in kit.
- Meets the requirements of IEC 60947-2.

### Where the adapters fit

- Fits all Kabeldon busbars.
- APXT1-4 fits all Kabeldon enclosures.
- APXT5 fits Kabeldon SDC enclosures.

### Tmax XT connection kits

For the larger breakers (XT6 and XT7) there are connection kits instead of adapter plates. These enable the larger breakers to still fit inside a Kabeldon SDC enclosure.

### Features of Tmax XT breaker

Now the advantages of the ABB SACE XT breakers are available in the Kabeldon IP-system.

Tmax moulded-case circuit-breakers guarantee an extremely high performance level from 135 A up to 1150 A (open air value) while being progressively smaller in size, simple to install and able to provide increasingly better safety guarantees for the operator.

Customized protection and information availability thanks to:

- Wide range of electronic trip units for a very accurate protection
- Accessories available in case remote control is needed.



## Ordering details

### Circuit breaker adapters for ABB SACE XT2 and XT4

Adapter plate and Kabeldon insulated connectors can be ordered together as one kit for circuit breaker ABB SACE MCCB Tmax XT2 and XT4.



APXT 4 kit

Designation	Suitable cabinet range	ID number	Rated current		Width	Cable area	Weight
			Open air	Enclosed			
			400 / 690 V	400 / 690 V	M=12,5 mm	mm <sup>2</sup>	kg/pcs
APXT 2 kit	all	2CGD000218A1000	160 A	160 A	10	50 ... 300	2.1
APXT 4 kit	all	2CGD000219A1000	250 A	220 A	10	50 ... 300	2.2

### Circuit breaker adapter for ABB SACE XT5

Suitable for circuit breaker type ABB SACE MCCB Tmax XT5.

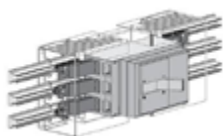


APXT 5

Designation	Suitable cabinet range	ID number	Rated current		Width	Cable area	Weight
			Open air	Enclosed			
			400 / 690 V	400 / 690 V	M=12,5 mm	mm <sup>2</sup>	kg/pcs
APXT 5	all	2CGD000806A1000	515 A	450 A	12	50 ... 300	4.0

### Circuit breaker connection kits for ABB SACE XT6 and XT7

Connection kits for ABB SACE MCCB XT6 and XT7. Circuit breaker to be ordered separately.



CKXT 6/7

Designation	Suitable cabinet range	ID number	Rated current		Width	Cable area	Weight
			Open air	Enclosed			
			400 / 690 V	400 / 690 V	M=12,5 mm	mm <sup>2</sup>	kg/pcs
CKXT 6	SDC, KSIK	2CGD001024A1000	715 A	630 A	38	-	16.1
CKXT 6+	SDC, KSIK	2CGD001025A1000	850 A	760 A	38	-	16.1
CKXT 7	SDC, KSIK	2CGD001026A1000	1150 A	930 A	42	-	16.1

## ABB Ability™

ABB Ability™ Electrical Distribution Control System is the innovative cloud-computing platform designed to monitor, optimize, predict and control the electrical system. The Tmax circuit breakers enable connection to ABB Ability™ for Kabeldon IP 20 system.

Through a compelling web app interface, ABB Ability™ Electrical Distribution Control System assists anytime and anywhere via smartphone, tablet or personal computer so the user can:

### Monitor

Discover plant performance, supervise the electrical system and allocate costs.

### Optimize

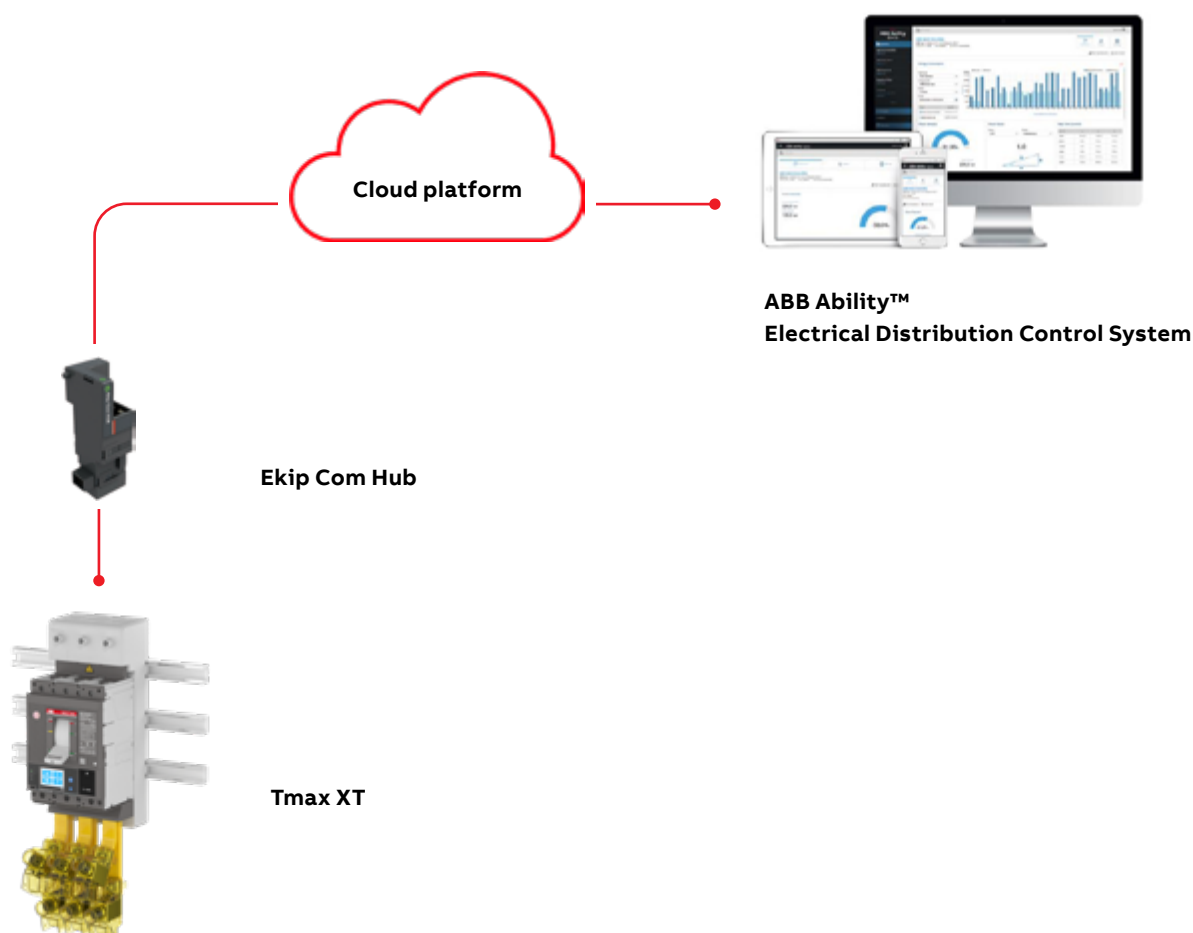
Schedule and analyze automatic reports, improve the use of assets and take the right business decision.

### Predict

Supervise the system health conditions and predict next maintenance actions.

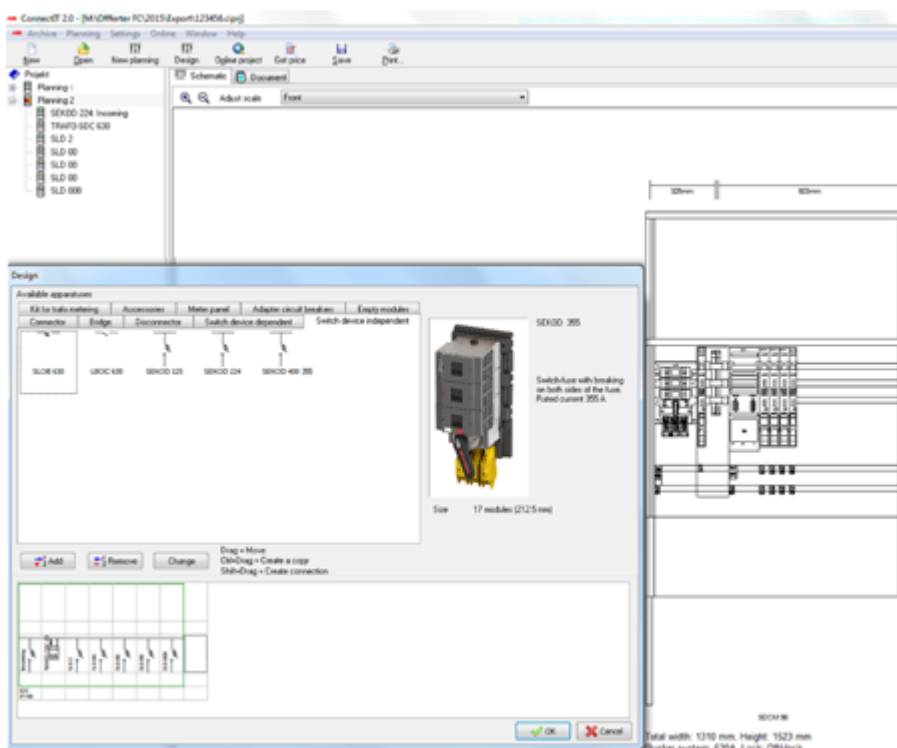
### Control

Set up alerts and notify key personnel, and remotely implement an effective power management strategy to achieve energy savings in a simple way.



## Speed up your planning, documentation and design process

The ConnectIT planning and design tool speeds up your project and saves valuable time when it comes to planning, documentation and design processes. It is a free software that enables you to design efficient solutions based on ABB Kabeldon's fusegear and cable distribution cabinet offering.



**ConnectIT makes it easy to design solutions and to obtain details of its components as follows:**

- Enclosures and accessories
- Switching devices and busbar connections
- Busbar system

### ConnectIT generates structured information for ordering, planning and documentation

- Single-line diagram, to which addresses, cable data and other details can be added.
- Front panel sketch which can be used as a basis for component mounting.
- Bill of material list of the complete system

ConnectIT is easy to use and lets you to freely create any desired combination of switching devices and enclosures. The design is done quickly and simply, with the aid of pictures and text.

ConnectIT is available for free,  
download at [www.abb.com](http://www.abb.com)





---

**ABB Electrification Sweden AB  
Kabeldon**

[abb.com/lowvoltage](http://abb.com/lowvoltage)

Copyright © 2021 ABB  
All rights reserved.

We reserve the right to make technical changes or modify the contents of this document without prior notice. With regard to purchase orders, the agreed particulars shall prevail. ABB does not accept any responsibility whatsoever for potential errors or possible lack of information in this document.



[link to web page](#)