

ABB-Welcome

IP-Gateway 83342-500



1	Information about the IP-Gateway	4
1.1	General information.....	4
1.2	Structure of the manual.....	4
1.3	Symbols in the manual.....	5
2	Safety.....	6
2.1	Intended use	6
2.2	Improper use.....	6
2.3	Target groups and qualifications	6
2.4	Liability and warranty	6
3	Environment.....	7
4	Integrating mobile end devices with ABB-Welcome IP-Gateway	7
4.1	System requirements	7
4.2	IP-Gateway start-up	9
4.2.1	Option 1: Commissioning with the Windows UPnP service.....	10
4.2.2	Option 2: Entering the IP address directly	12
4.3	Setup of the mobile devices with IP-Gateway	14
4.3.1	Step 1: Registering and logging into myABB-LivingSpace portal.....	14
4.3.2	Step 2: Connecting the IP-Gateway at www.my-abb-livingspace.com.....	14
4.3.3	Step 3: Installing the "Welcome" App.....	15
4.3.4	Step 4: Coupling the IP-Gateway and "Welcome" App	15
5	General function of home page.....	18
5.1	General buttons in the configuration	18
5.2	Login	18
5.2.1	RESET	20
6	Configuration for IP-Gateway.....	21
6.1	Network information	21
6.2	"Network configuration" page	22
6.3	"Basic settings" configuration page	23
6.4	"Change password" configuration page	24
6.5	"Device settings" configuration page.....	25
6.5.1	Add device	26
6.6	"Portal Login" configuration page.....	27
6.7	"APP Management" configuration page	28
6.8	"Associated ComfortTouch 2.x" configuration page	31
6.9	"Associated ComfortTouch 3.x" configuration page	32
6.9.1	"Add user" configuration page.....	33
6.10	"Import/Export configuration file" configuration page.....	35
6.11	"Firmware Update" configuration page.....	36
6.12	"NTP settings" configuration page.....	37
6.13	"Version Information" configuration page	39
7	Configuration for Telephone Gateway	40
8	Integrating mobile end devices with the Welcome App.....	44
8.1	Android version 4.0 or higher	44
8.2	iOS version 4 or higher	45
9	Network security	46
10	Integrating a Busch-ComfortTouch® 3.0 or higher	47
11	Technical data.....	48
11.1	Overview table	48
11.2	Device connection / circuit diagram.....	49
11.3	Dimensions / dimensional drawing.....	50
12	Product overview	50
12.1	Device setup	50
13	Installation and electrical connection	51
13.1	Requirements for the electrician	51
13.2	Mounting	51

1 Information about the IP-Gateway

1.1 General information

Please read through this manual carefully and adhere to the information listed. This will ensure reliable operation and long service life of your product.

For reasons of clarity, this manual does not contain all the detailed information on all the models of the products, nor can it take into consideration all conceivable circumstances related to installation, operation and maintenance. If additional information is required or problems arise that are not covered in this manual, the necessary information can be requested from the manufacturer.

The product has been constructed according to the latest valid regulations governing technology and is operationally reliable. It has been tested and left the factory in a technically safe and reliable state. To maintain this state for the period of its operation, the specifications of this manual must be observed and adhered to.

Modifications and repairs to the product must only be undertaken if the manual expressly permits this.

It is only the adherence to the safety instructions and all safety and warning symbols in this manual that will ensure the optimum protection of the user and the environment as well as the safe and trouble-free operation of the product.

1.2 Structure of the manual

- This manual provides you with the detailed technical information about the device, its installation and configuration. The use of the device is explained by means of examples.
- The chapters "Information on the manual," "Safety," "Environmental information" and "Product overview" contain general specifications and basic information as well as a description of functions.
- Chapters "Technical data" and "Installation and electrical connection" describe the device technology and installation, mounting and the electrical connections.
- Chapters "Integrating" and "Configuration" contain instructions on commissioning and setting up or integrating the device.
- Chapter "Maintenance" contains information about cleaning, fault condition diagnostics and repairing the device.

1.3 Symbols in the manual



Danger - danger to life

This symbol in connection with the signal word "Danger" indicates dangerous situations which could lead to immediate death or serious injury.



Warning - danger to life

This symbol in connection with the signal word "Warning" indicates a dangerous situation which could lead to immediate death or serious injury.



Caution - risk of injury

This symbol in connection with the signal word "Caution" indicates a possibly dangerous situation which could lead to slight or moderately serious injury.



Attention - damage to property

This symbol indicates a possibly harmful situation. Non-observance of the safety instructions can lead to damage or destruction of the product.



Note ...

This symbol indicates information or references to additional useful topics. This is not a signal word for a dangerous situation.



This symbol refers to integrated videos with additional information on the respective chapter.



This symbol indicates information on the protection of the environment.

Examples of Application, installation and programming are displayed with a gray background.

2 Safety



Warning

Electric voltage!

Risk of death and fire due to electrical voltage of 100-240 V.

- Work on the 100-240 V supply system may only be performed by authorized electricians!
- Disconnect the mains power supply prior to installation and/or disassembly!



Caution

Risk of damaging the device due to external factors!

Moisture and contamination can damage the device.

That is why the device must be protected against humidity, dirt and damage during transport, storage and operation!

2.1 Intended use

The device must only be operated within the specified technical data!

The device is used for door communication and video transmission.

To set up the device requires an external device (laptop).

2.2 Improper use

The device is dangerous if used improperly. Any non-intended use is deemed improper use. The manufacturer is not liable for damages resulting from such improper use. The associated risk is borne by the user/operator.

2.3 Target groups and qualifications

Installation, commissioning and maintenance of the product must only be carried out by trained and properly qualified electrical installers. The electrical installers must have read and understood the manual and follow the instructions provided. The operator must adhere to the valid national regulations in his country governing the installation, functional test, repair and maintenance of electrical products.

2.4 Liability and warranty

Improper use, non-observance of this manual, the use of inadequately qualified personnel, as well as unauthorized modification excludes the liability of the manufacturer for the damages caused. It voids the warranty of the manufacturer.

3 Environment



Consider the protection of the environment!

Used electric and electronic devices must not be disposed of with household waste.

- The device contains valuable raw materials that can be recycled. Therefore, dispose of the device at the Appropriate recycling facility.

All packaging materials and devices bear the markings and test seals for proper disposal. Always dispose of the packaging material and electric devices and their components via an authorized recycling facilities or disposal companies.

The products meet the legal requirements, in particular the laws governing electronic and electrical devices and the REACH ordinance.

(EU Directive 2002/96/EC WEEE and 2002/95/EC RoHS)

(EU REACH ordinance and law for the implementation of the ordinance (EC) No.1907/2006)

4 Integrating mobile end devices with ABB-Welcome IP-Gateway

4.1 System requirements



Note

Please note that the IP-Gateway must be connected to the router by a LAN cable.

The following system requirements are necessary for smooth operation of the IP-Gateway:

Components for the IP-Gateway

The following components are required to operate the IP-Gateway:

- A Welcome door entry system including at least one outdoor station and one system controller
- IP network (should connect mobile devices, must have a WLAN connection)
- An outdoor station with camera must be integrated for video transmission

As tenants

As tenants, the following come into question for operation with the IP-Gateway:

- Tablet PC or similar device with an iOS or Android operating system for the installation of the App with an Internet connection via 3G/UMTS or WLAN. The data rate (e.g. a flat rate) must allow for Voice-over-IP ("VoIP") connections.
- Laptop, tablet PC or similar device with an Internet browser for access to myABB-LivingSpace portal at address <https://my.abb-livingspace.com/en/user/login/> and for the configuration of the IP-Gateway in the home network

Mobile App

If you want to use the Welcome mobile App from the Internet, the following requirements must also be met:

- DSL-6000 Internet connection or faster
- Minimum 3G (UMTS) mobile Internet



Note

An Internet connection slower than ADSL 6.000 or 3G/UMTS impairs the quality of video streaming from the IP-Gateway to the Apps.

Error! Use the Home tab to apply
标题 1 to the text that you want to
appear here.

4.2 IP-Gateway start-up

The IP-Gateway has a user interface that can be reached via an Internet browser. The user interface can be opened from every computer that is part of the same network as the gateway that is to be configured.

For the initial startup of the IP-Gateway, a few basic settings need to be made in this user interface.

Two options are available to you for commissioning:

Commissioning	Description
Option 1 - UPnP	Commissioning with the Windows UPnP service (Windows Vista or higher)
Option 2 - IP address	Enter IP address directly



Information regarding documentation

The Windows 7 interface is used to describe the configuration options.

4.2.1 Option 1: Commissioning with the Windows UPnP service

Preconditions:

- There is a DHCP server on the network, e.g. integrated in the router.
- The IP-Gateway is connected to the router by a LAN cable.
- The PC is connected to the router by a LAN.
- The IP-Gateway is connected and ready for operation.

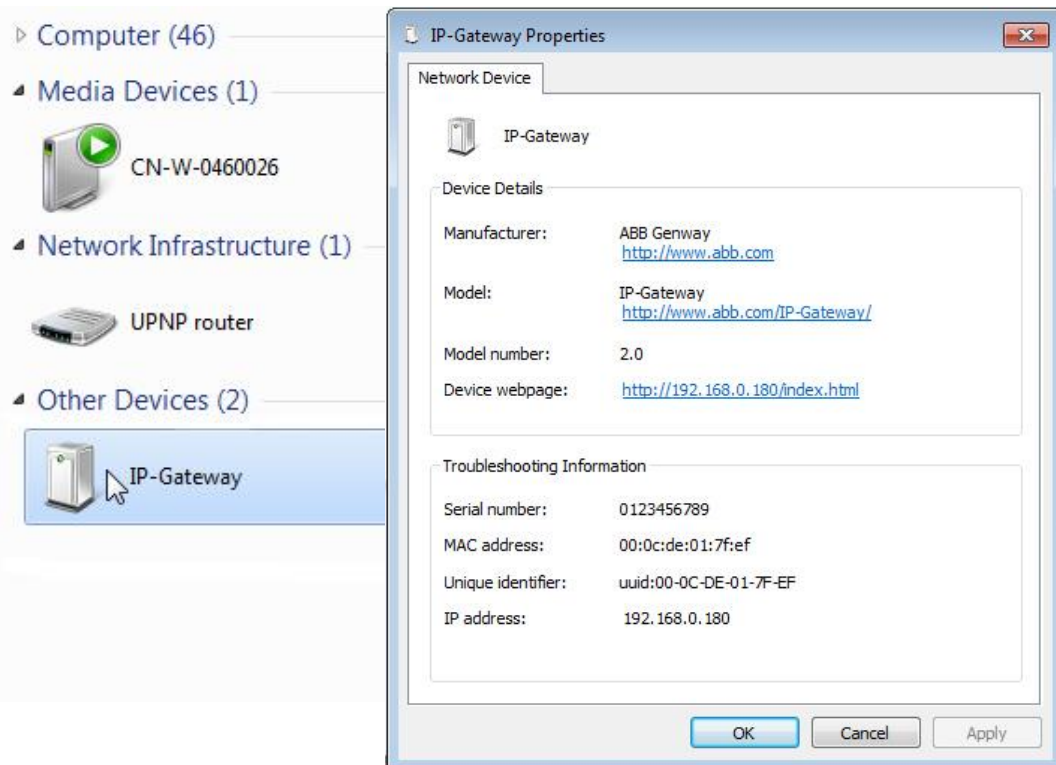
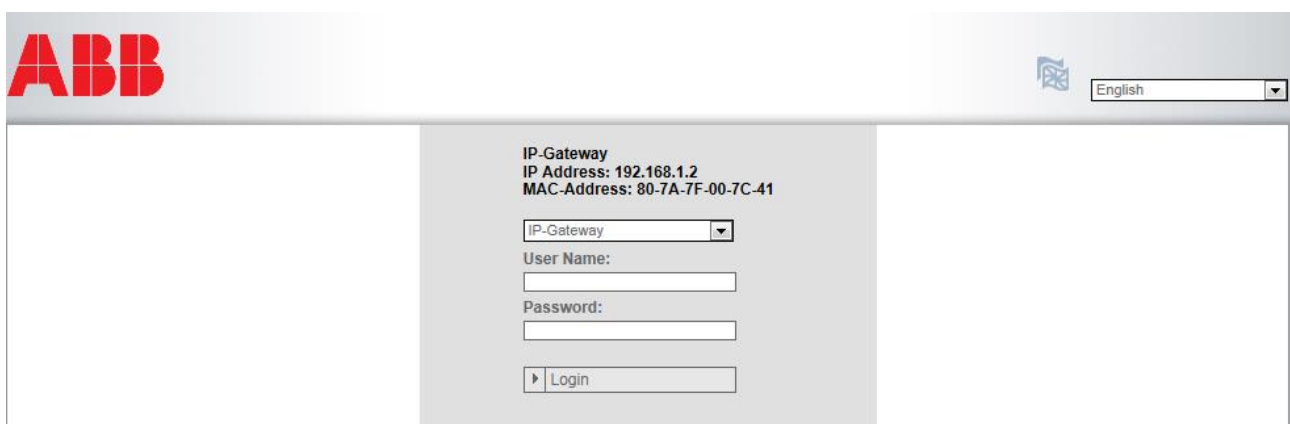


Fig. 1: Windows UPnP service

1. Open Windows Explorer.
2. Click the "Network" entry below the displayed drives.
The window pane on the right now displays all devices currently on the network.
3. Double-click the IP-Gateway icon.
A browser window with the configuration interface automatically opens.

Fig. 2





Note

If the browser does not open automatically, the device properties Appear instead. Copy the displayed IP address, e.g. 192.168.0.180, and enter it manually into the browser's address bar.



Note

If the IP-Gateway icon can't be found, you could check the Windows firewall. For example, turn off the windows firewall. If you still can't find the IP-Gateway icon, you can go to Option 2.

4.2.2 Option 2: Entering the IP address directly

Preconditions:

- There is a DHCP server on the network, e.g. integrated in the router.
- The IP-Gateway is connected to the router by a LAN cable.
- The PC is connected to the router by a LAN.
- The IP-Gateway is connected and ready for operation.

1. Link the external device in a common network to the IP-Gateway.
2. Launch the control panel.
3. Get the DHCP server address according to the following steps.
For example: the DHCP server address is 192.168.1.1.

View your basic network information and set up connections

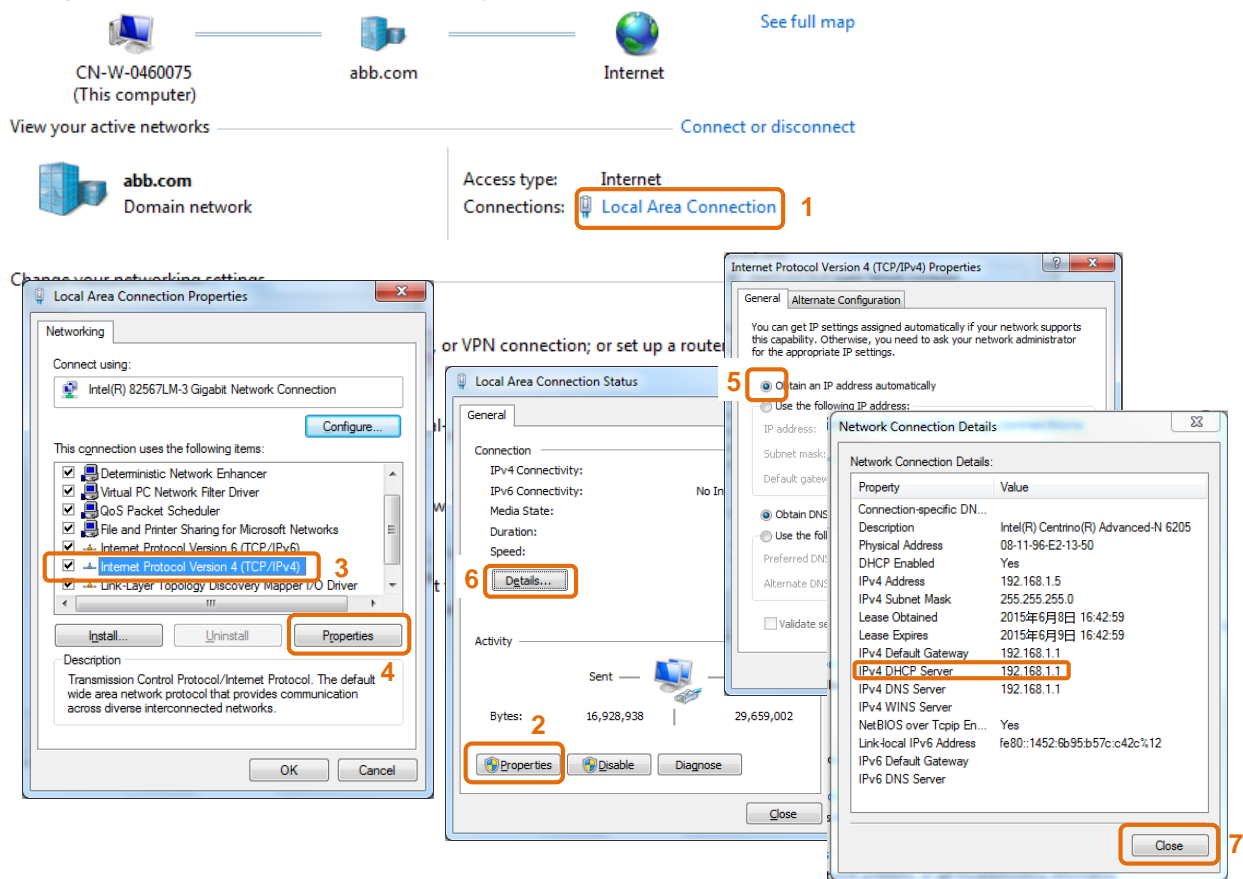


Fig. 3: Get DHCP server address

4. Open the user interface of your router.
Enter the DHCP server address directly into the address line of your browser to see a list of all connected devices including their names and IP addresses. Copy the IP address of the device "IP-Gateway."

Error! Use the Home tab to apply
标题 1 to the text that you want to
appear here.

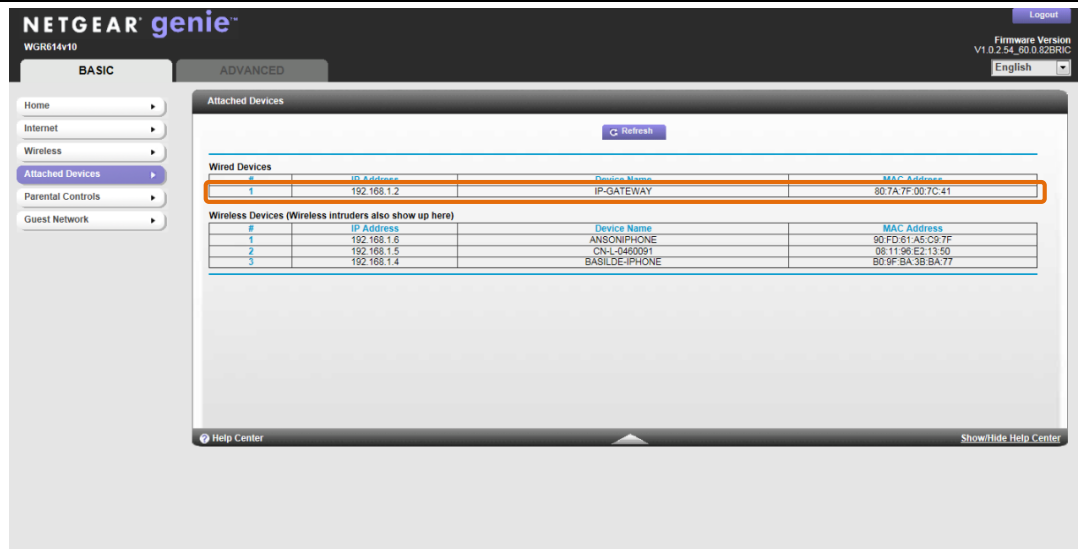


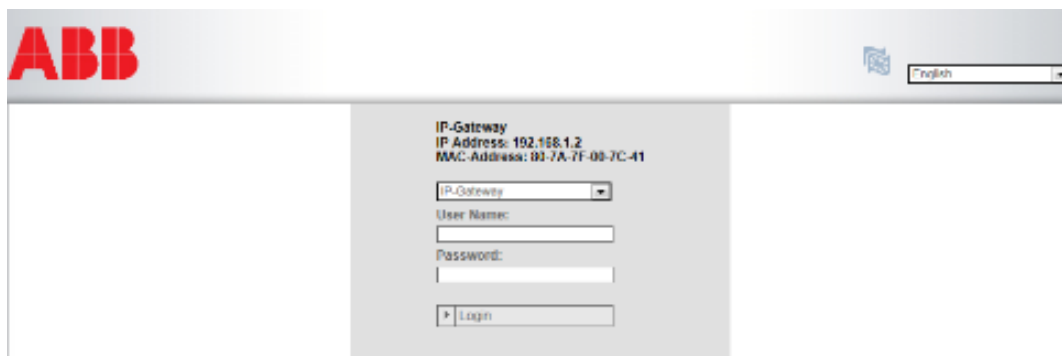
Fig. 4



Note

Get the IP address of IP-Gateway directly from the attached devices list, for example, 192.168.1.2.

- Enter the IP address of the gateway directly into the address line of your browser to call up the user interface of the gateway.



Enter the default values in the "User name" and "Password" input fields.

(default values):

User name: admin

Password: admin

Click the "Login" button to display the configuration menu.

4.3 Setup of the mobile devices with IP-Gateway

4.3.1 Step 1: Registering and logging into myABB-LivingSpace portal

The image shows two screenshots of the ABB portal interface. The left screenshot is the 'Login' page, featuring two input fields for username and password, an 'OK' button, and a 'Register' link (annotated with a red box and the number 1). The right screenshot is the 'Registration' page, titled 'Please fill out the form'. It contains fields for 'Username' (filled with 'abc123'), 'Password', 'Password confirm', and 'E-Mail' (filled with 'abc123@gmail.com'). These fields are grouped by a red box and labeled with the number 2. Below these fields are two checkboxes: 'I accept the terms of use' (annotated with a red box and the number 3) and 'I accept the data protection terms'. At the bottom is a 'Register' button (annotated with a red box and the number 4).

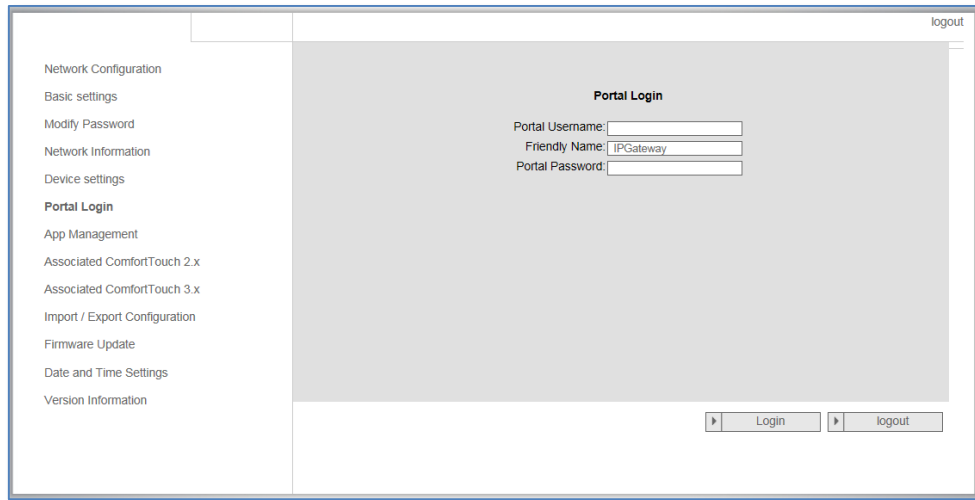
ABB portal Login

1. Open page *my.abb-livingspace.com* and register a new user.
2. Input a username, password and email to receive your active link.
3. Read and accept both of the items.
4. Click the "register" button.
5. Activate your user account via email.

4.3.2 Step 2: Connecting the IP-Gateway at www.my-abb-livingspace.com

In the web interface of the IP-Gateway, in menu *Portal Login*, enter your data and the name of the IP-Gateway. Click on the login button to connect the IP-Gateway with the portal.

Error! Use the Home tab to apply
标题 1 to the text that you want to
appear here.



Web interface IP-Gateway

4.3.3 Step 3: Installing the "Welcome" App

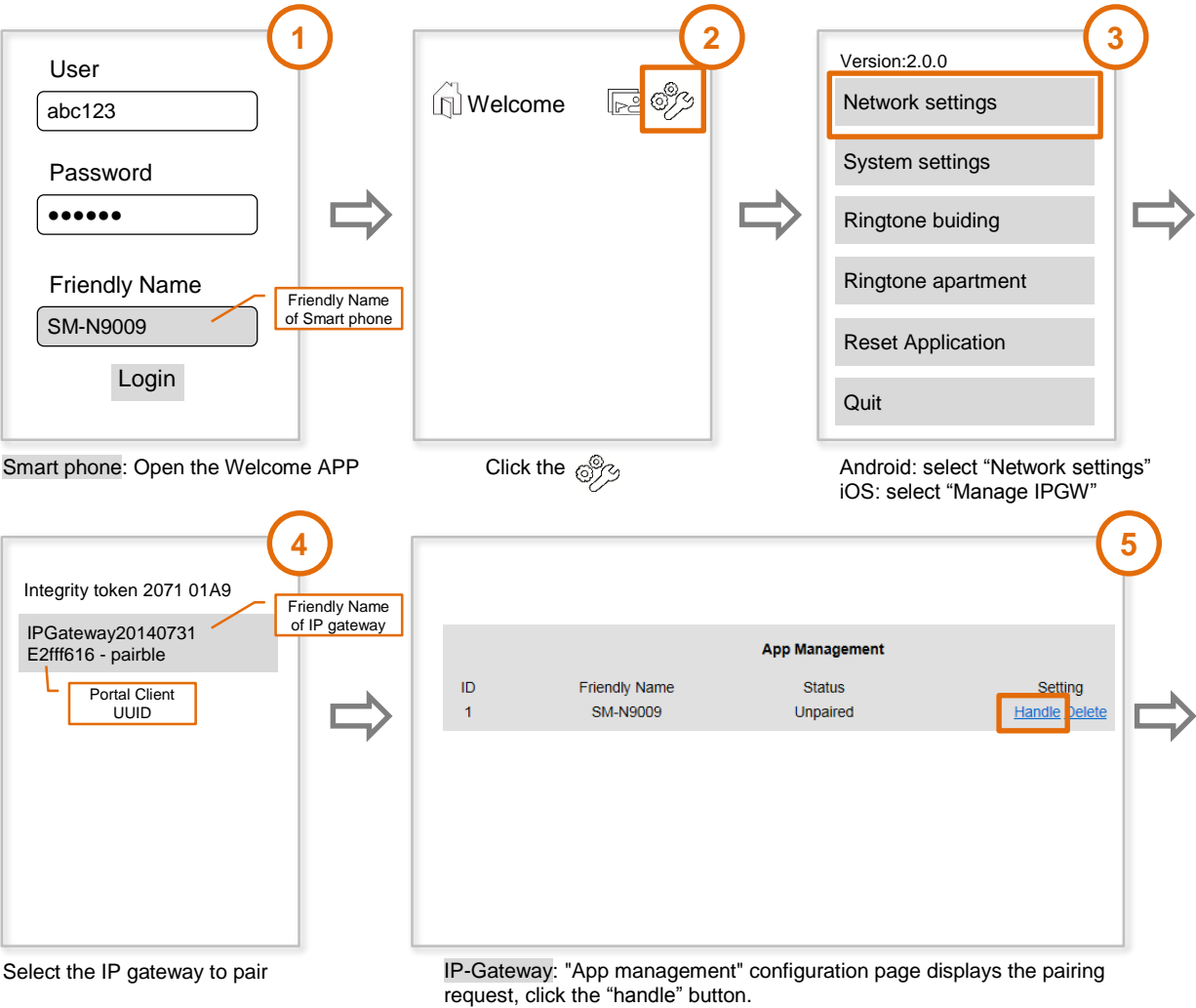
You can download the ABB-Welcome App from Google Play or the Apple App Store by entering keyword "ABB Welcome".

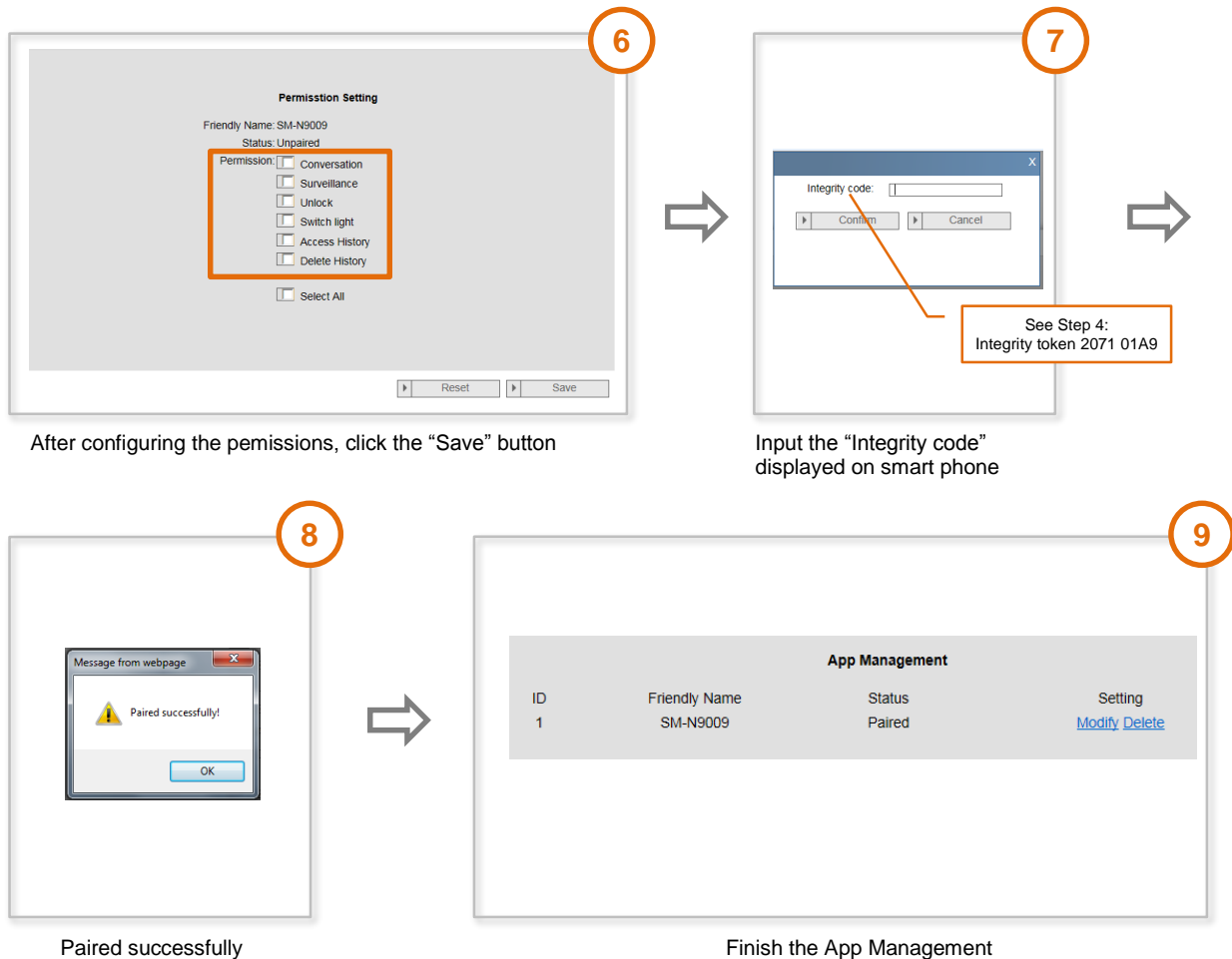


Welcome APP

4.3.4 Step 4: Coupling the IP-Gateway and "Welcome" App

Error! Use the Home tab to apply
标题 1 to the text that you want to
appear here.





1. Open the App, and enter the data for access to myABB-LivingSpace portal. Click the *Login* button to connect the App with the portal.
2. In the App, select menu *Settings* and then Manage IP-Gateway or Network settings.
3. Click the IP-Gateway you wish to couple and note the security code (integrity code) displayed.
4. In the web interface of the IP-Gateway, select menu item *App management* and select your mobile terminal device via the edit button.
If the desired device is not in the list, update it via the Update button.
5. You can now assign the desired access rights to the App of the respective device.
6. You complete the coupling by entering the security code (integrity code).

5 General function of home page

All configurations are set in the browser interface.

5.1 General buttons in the configuration

"Log off" button

Click the "Log off" button at the top right to leave the configuration interface as a logged-on user.
You can leave the configuration interface at any time.

"Reset" button

If you have entered incorrect data in the input fields, click the "Reset" button to clear all your entries.
All input fields are cleared and you can enter your data again.

"Save" button

Click the "Save" button to save your entries and to continue to the next configuration page.

Switching to a new configuration page

Click the individual configuration pages in the left column of the configurations to switch to the required configuration page.

5.2 Login

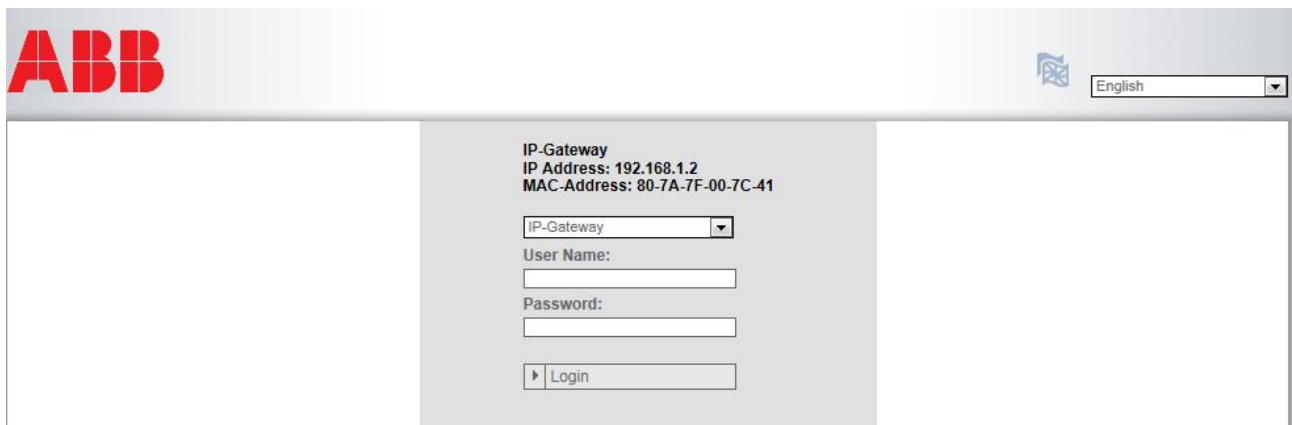


Fig. 5: Login window

The IP address shows you the IP address currently used by the device.
The MAC address shows you the MAC address currently used by the device.

Language

The default language is English. Select the flag for other language options.

User name

Enter the default values in the "User name" and "Password" input fields.
(default values):

User name: admin
Password: admin

"Login" button

Click the "Login" button to display the configuration menu.
The window with the network information Appears.

5.2.1 RESET



Note

If you forget your user name and password, you can reset the IP-Gateway back to its factory settings.

The "Reset" button is located on the front of the IP-Gateway behind a flap.

Performing the reset

1. Press the "Reset" button for at least 3 seconds.

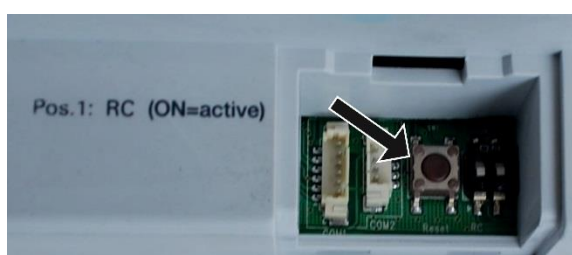


Fig. 6: Location of the Reset button

6 Configuration for IP-Gateway

6.1 Network information

The network information Appears after logging in.

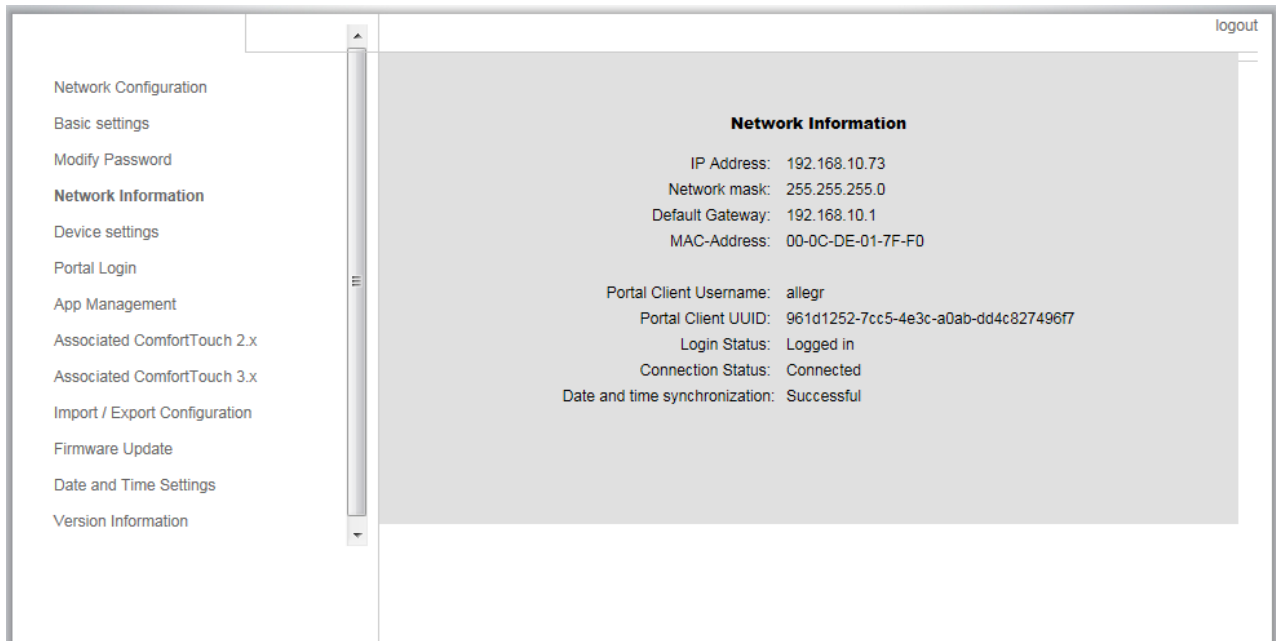


Fig. 7: Network information

The "Network information" page displays the IP-Gateway settings currently used.

IP address

The IP address is the address for accessing the connected IP-Gateway.
You need this address to log into the configuration interface!

Portal client information

Display the connection status between IP-Gateway and server.

Date and time synchronization

Display the status of the date and time synchronization.



Note

Note the displayed IP address to log into the configuration again, e.g. after restarting the system when creating other user accounts.

6.2 "Network configuration" page

The screenshot shows the 'Network Configuration' page. On the left is a sidebar menu with the following items: Network Configuration, Basic settings, Modify Password, Network Information, Device settings, Portal Login, App Management, Associated ComfortTouch 2.x, Associated ComfortTouch 3.x, Import / Export Configuration, Firmware Update, Date and Time Settings, and Version Information. The main content area is titled 'Network Configuration' and features two radio buttons: 'DHCP' (unchecked) and 'Static IP' (checked). Below the radio buttons are four rows of input fields, each with four boxes separated by dots. The first row is 'IP Address' with values 192, 168, 0, 182. The second row is 'Network mask' with values 255, 255, 255, 0. The third row is 'Default Gateway' with values 192, 168, 0, 5. The fourth row is 'DNS' with values 192, 168, 0, 5. At the bottom right of the main area are two buttons: 'Reset' and 'Save'.

Fig. 8: "Network configuration" page

You can configure your device as required on the "Network configuration" page.

DHCP

Select "DHCP" for the device to automatically obtain an IP address.

Static IP address

Please note that the IP address of the gateway does not change when a static address is assigned. A static IP address only needs to be assigned in exceptional cases to manually configure the network. Click the "Static IP address" check box to enter the following addresses:

IP Address, Network mask, Default Gateway, DNS.

6.3 "Basic settings" configuration page

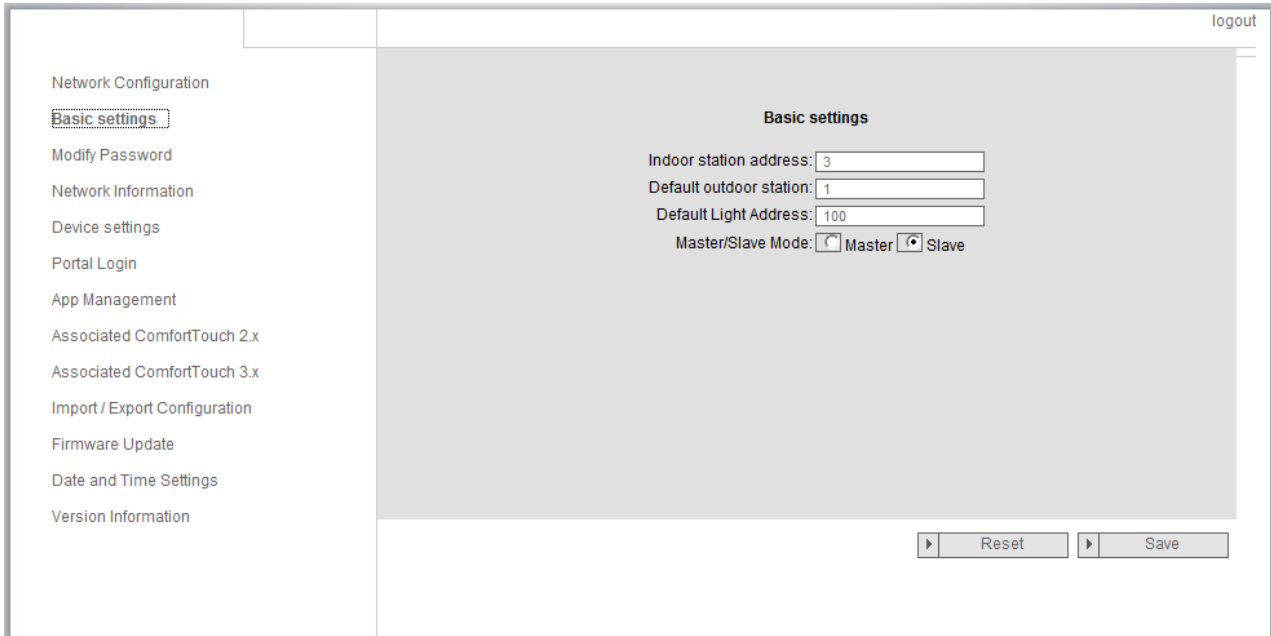


Fig. 9: "Basic settings" configuration page

You can adjust the basic settings for the IP-Gateway on the "Basic settings" configuration page.

Address of the indoor station

The address of the indoor station indicates which call button on the outdoor station is used to control the IP-Gateway.



Note

Up to 4 terminal devices, including smart phone, Tablet and **Busch-ComfortTouch®**, can be connected with one IP-Gateway inside one apartment.

Default outdoor station

The address of the default outdoor station is the station set as the preferred outdoor station. One audio and video connection also without incoming door call can be set up for this station.

Master/slave mode

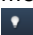
When more than one indoor station is installed in the apartment (same address), one station must be configured as master and others as slave.

Default Light Address

The address of the light indicates the address of switch actuator (M2305)



Note

Switch actuator (M2305) must work on "Time relay mode," and a light or a lock can be connected with it. You can control this light or lock by  button on the Welcome App interface. (For the details about the switch actuator, please refer to the M2305 user manual.)

6.4 "Change password" configuration page

logout

Network Configuration

Basic settings

Modify Password

Network Information

Device settings

Portal Login

App Management

Associated ComfortTouch 2.x

Associated ComfortTouch 3.x

Import / Export Configuration

Firmware Update

Date and Time Settings

Version Information

Modify Password

Current Password:

New Password:

Confirm new Password:

Reset Save

Fig. 10: "Change password" configuration page

You can change the password on this configuration page.

Current password

Enter the password previously used.

New password

Enter your new password.

Confirm new password

Enter your new password again.



Note

You can only change the password for the current active user. Please follow the general recommendations for generating strong passwords.

6.5 "Device settings" configuration page

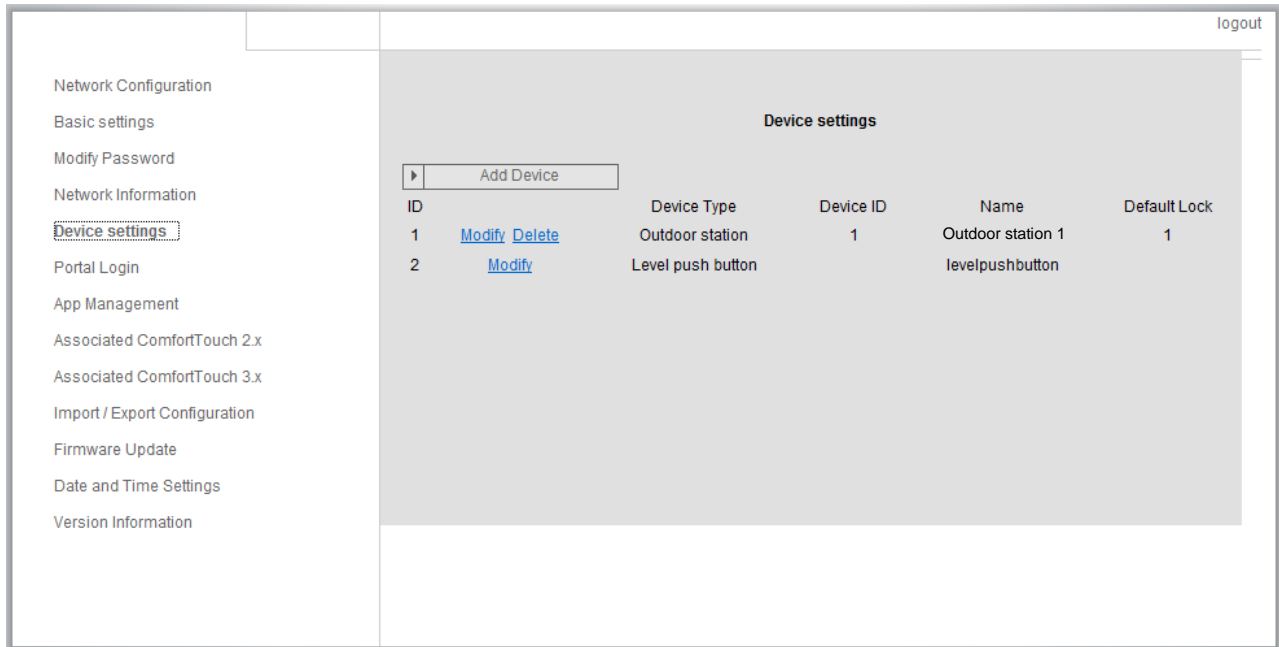


Fig. 11: "Device settings" configuration page

All outdoor stations to be connected to the IP-Gateway (max. 9) must be listed in the *Device settings*.

Add device:

You can add individual devices on this page.
See "Add devices" section below for details.

The configuration page displays a list of added devices.

ID

The ID is the sequential number of the device.

Modify

Click the "Modify" button to change your settings.
The current settings Appear and can be modified.

Delete

Click the "Delete" button to remove a user from the list.

Device type

This is the device type description.


Device ID

The ID is the address of the outdoor station. (If there is only one outdoor station, the ID as a rule is 1.)

Name

When using the Welcome App, the name is shown.

Default lock

The default lock is set as preferred lock of outdoor station, which will be released when you press  button on Welcome App.

6.5.1 Add device

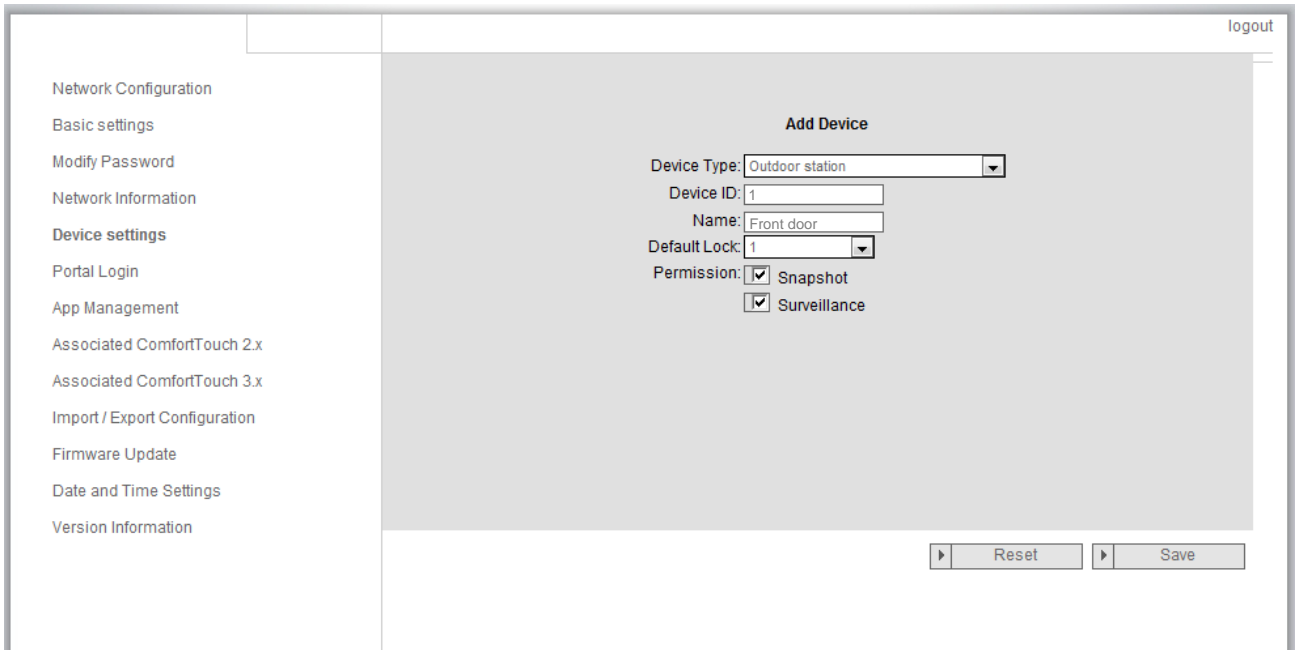


Fig. 12: "Add device" configuration page

Device type

Select the required device type from the "Device type" drop-down list.



Note

The floor call button is already set up as the default device. The device name can be adjusted as required.

Device ID

Enter the address set on the first control dial of the outdoor station (1 – 9).

Name

The device name, e.g. for incoming calls, Appears on the display of the mobile device or **Busch-ComfortTouch®**. Assign intuitive names, e.g. "Front door."

Permission

The option to automatically record images (snapshots) is permitted, and can be specified for each outdoor station individually.



Note

Making and saving video recordings can infringe on personal rights!
Always observe Applicable legal and labeling requirements for placement and operation of video components!

Default Lock

Enter the lock number, lock 1 or lock 2.

Lock 1 means the default lock for outdoor station, and lock 2 means the second lock. (Please refer to the outdoor station user manual for setting the default lock/second lock.)

6.6 "Portal Login" configuration page

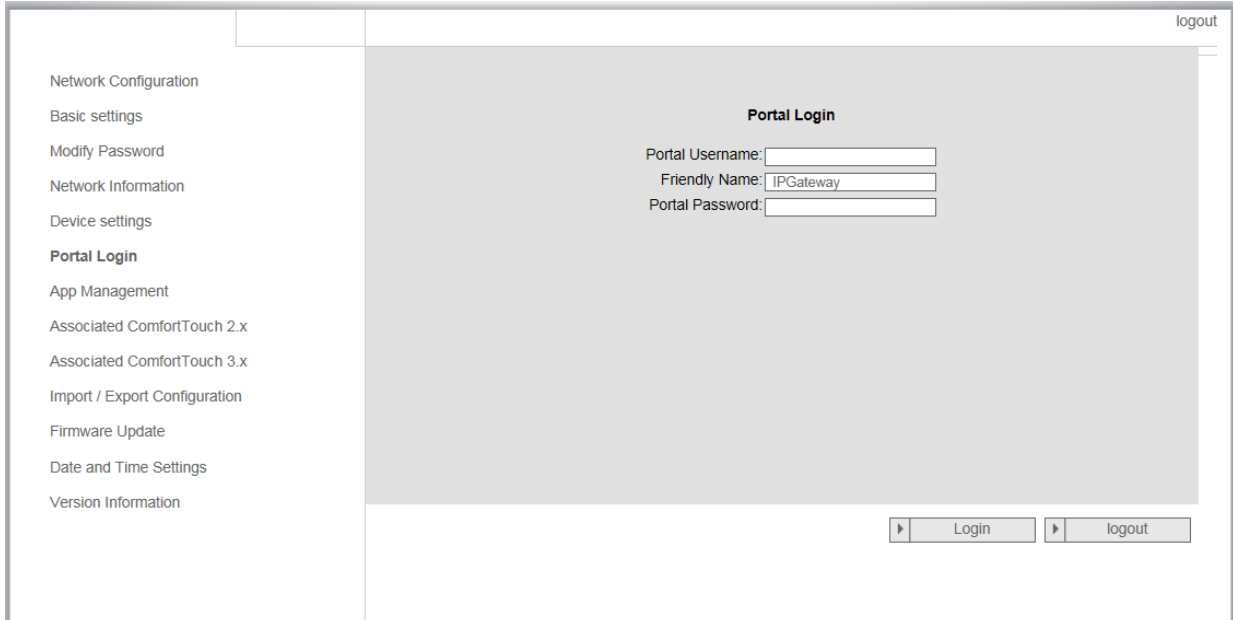
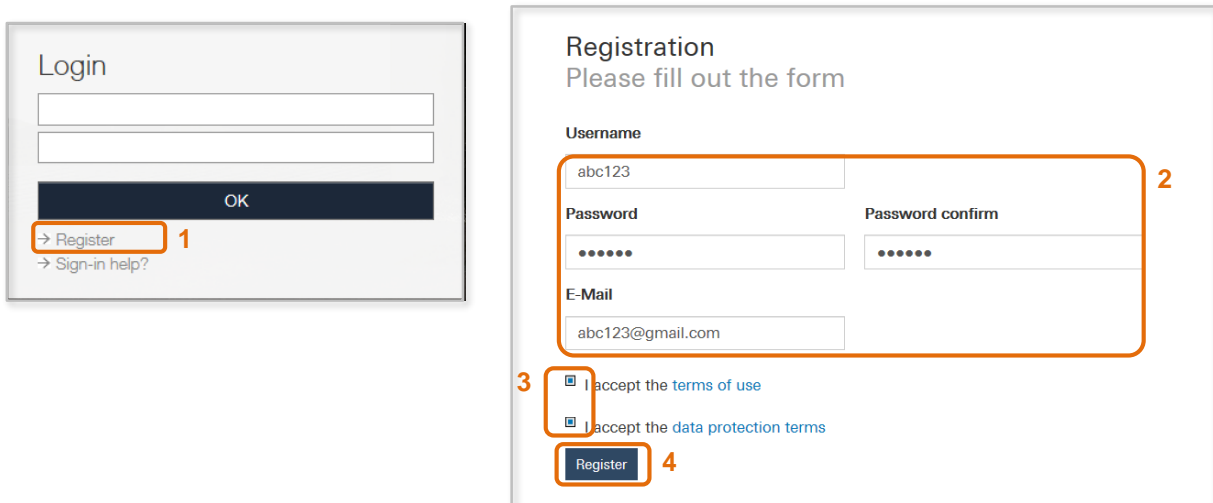


Fig. 13: "Portal Login" configuration page

1. Open page my.abb-livingspace.com and register a new user.



2. Input a username, password and email to receive your active link.
3. Read and accept both of the items.
4. Click the "register" button.
5. Activate your user account via email.
6. Login the user name and password on "Portal Login" configuration page.

Friendly Name

Name for this IP-Gateway, which will display in the device list of smartphone, e.g. IP-Gateway.

6.7 "APP Management" configuration page

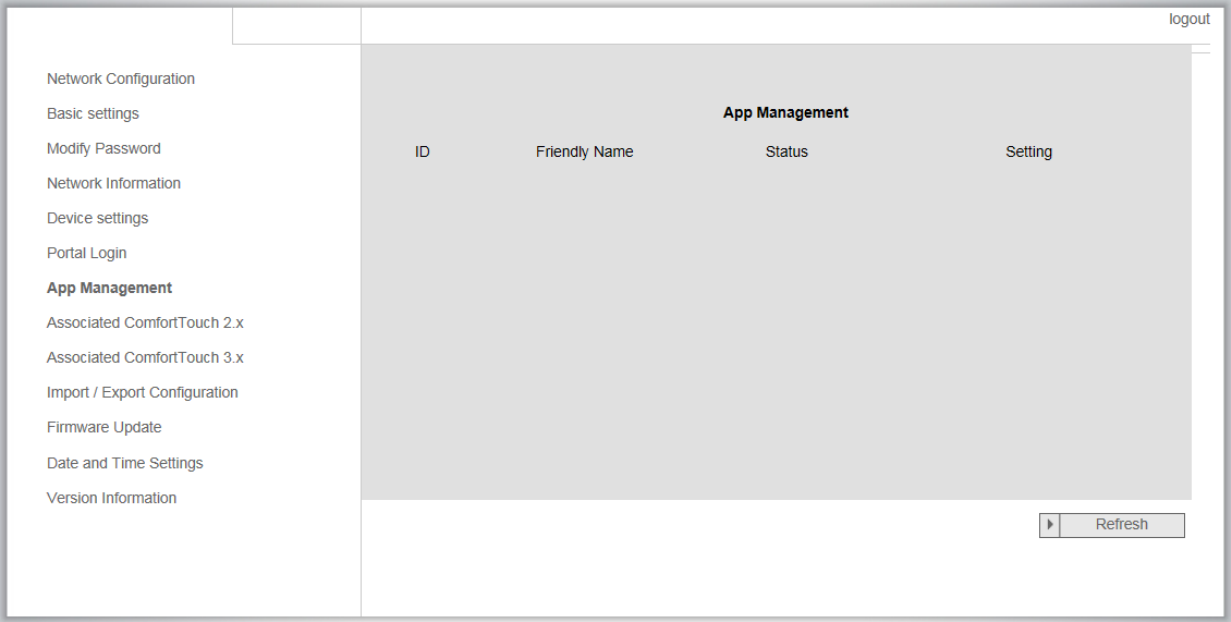
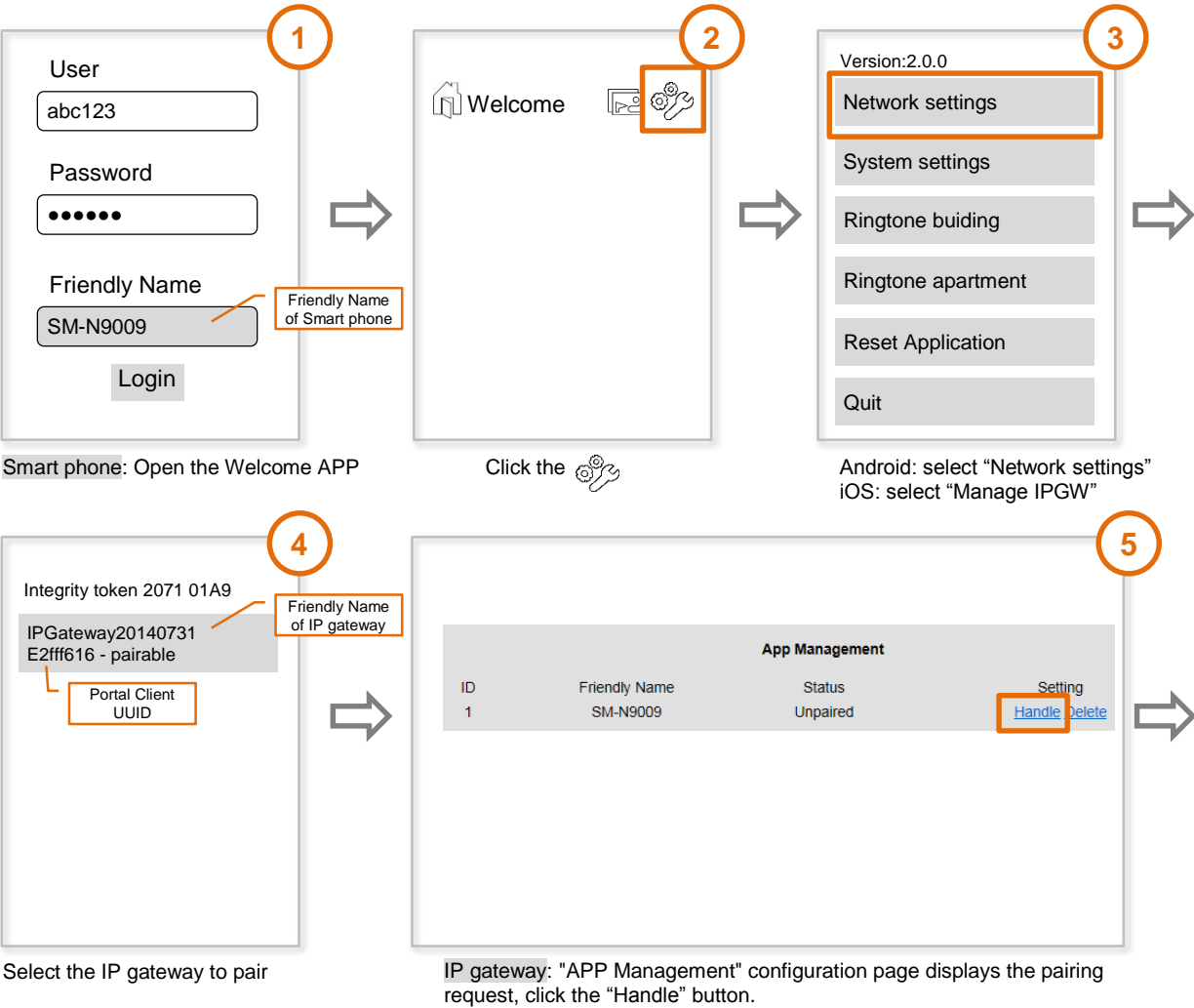


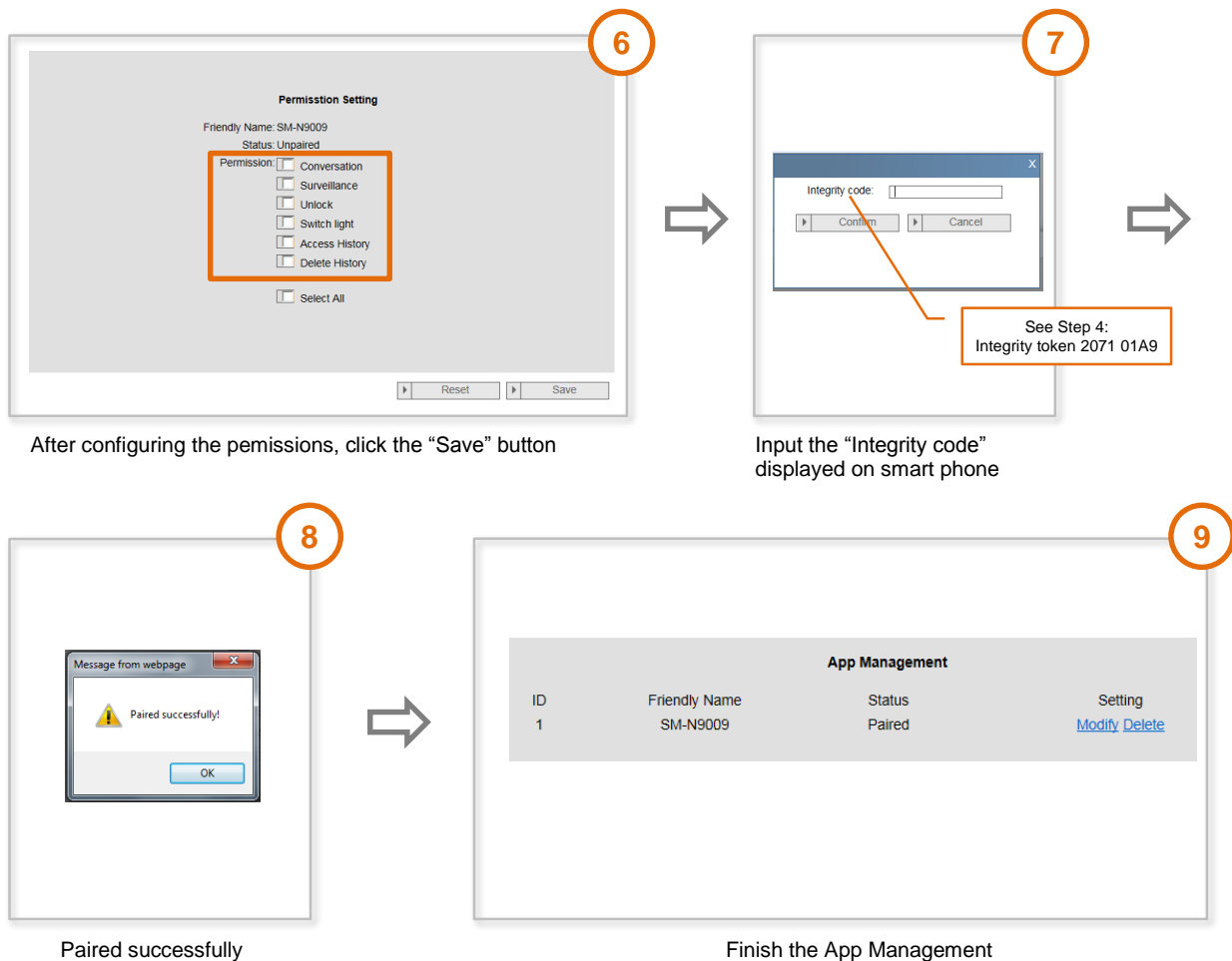
Fig. 14: "App Management" configuration page

Pair IP-Gateway and smart phone:

Error! Use the Home tab to apply
标题 1 to the text that you want to
appear here.



Error! Use the Home tab to apply
标题 1 to the text that you want to
appear here.



Modify

Click the "Modify" button to change your settings.
The current settings Appear and can be modified.

Delete

Click the "Delete" button to remove a user from the list.

6.8 "Associated ComfortTouch 2.x" configuration page

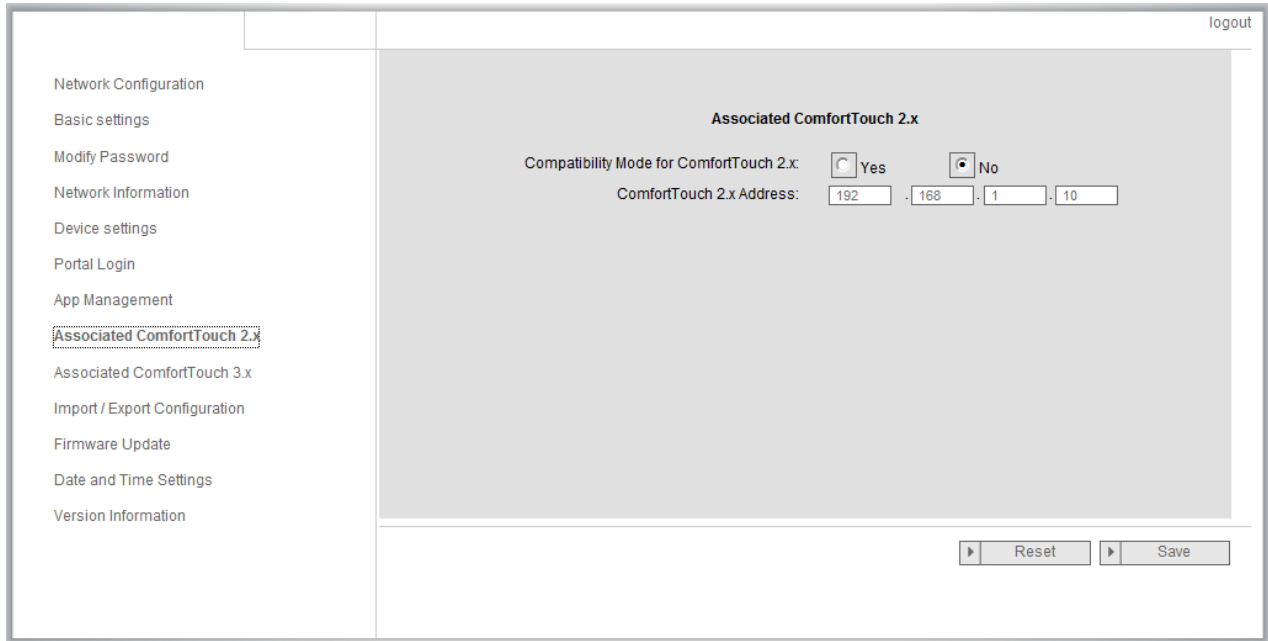


Fig. 15: "Associated **Busch-ComfortTouch**® 2.x" configuration page

The IP-Gateway can be used to control **Busch-ComfortTouch**® of the series 2.x. The **Busch-ComfortTouch**® firmware must be version 2.4 or higher.

1. Create a user, e.g. ComfortTouch1.
2. Set the compatibility mode to "Yes."
3. Enter the IP address of the **Busch-ComfortTouch**® in the "ComfortTouch 2.x address" field.
4. Create a configuration project in IPP 2.4 for the **Busch-ComfortTouch**®, "Door communication" Application page.
5. Enter the IP address of the IP-Gateway in the "Outdoor station" tab in the "Outdoor station IP address" menu box.
6. Enter the address of the outdoor station.



Note

If you want to remove a **Busch-ComfortTouch**® 2.x that is already connected to the Welcome system, simply set compatibility mode to "No." The address does not have to be deleted.

6.9 "Associated ComfortTouch 3.x" configuration page

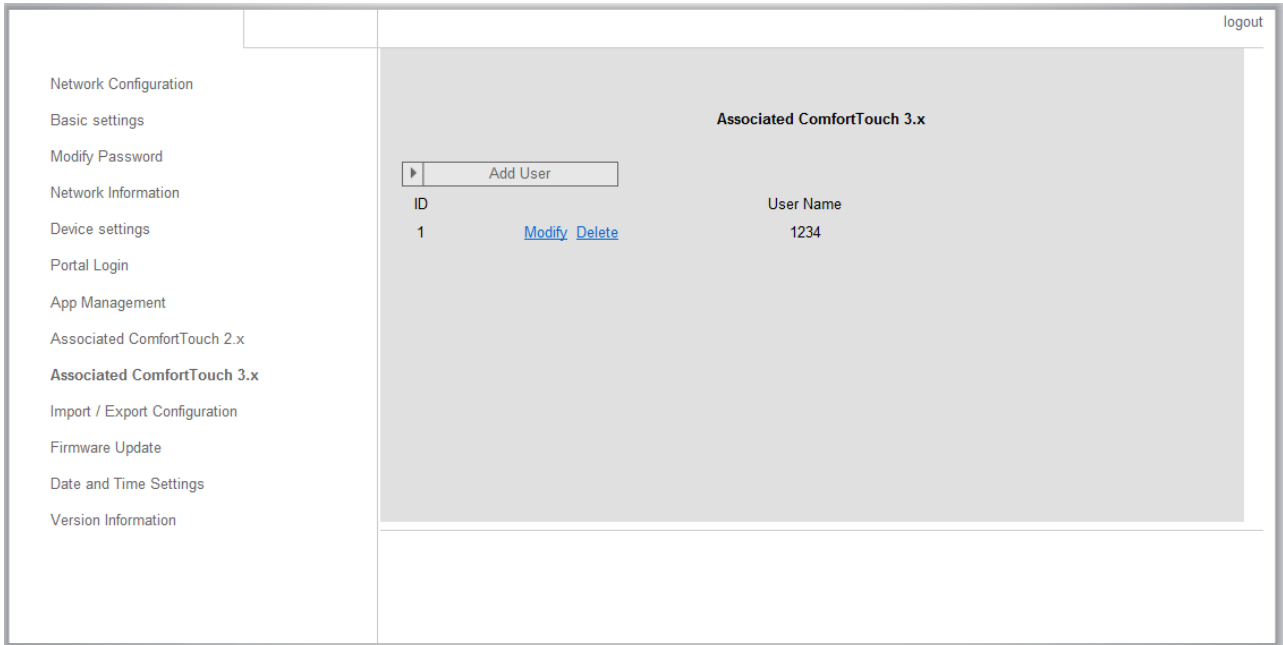


Fig. 16: "Associated **Busch-ComfortTouch®** 3.x" configuration page

The IP-Gateway can be used to control **Busch-ComfortTouch®** of the series 3.x.
You can create up to three new users and administer your user settings on this configuration page.

ID

The ID is the sequential number of the user.

User name

All assigned accounts are displayed under "User name." Several devices can be logged in under each account.
You have the option of deleting the user or editing the settings.

Add user

Click the "Add user" button to create a new user.

1. Click the "Add user" button.

The description of the "Create new user" configuration page explains this function.

Modify

Click the "Modify" button to change your personal user settings.

The "Add user" configuration page opens. The current user Appears and can be edited.

Delete

Click the "Delete" button to remove a user from the list.

6.9.1 "Add user" configuration page

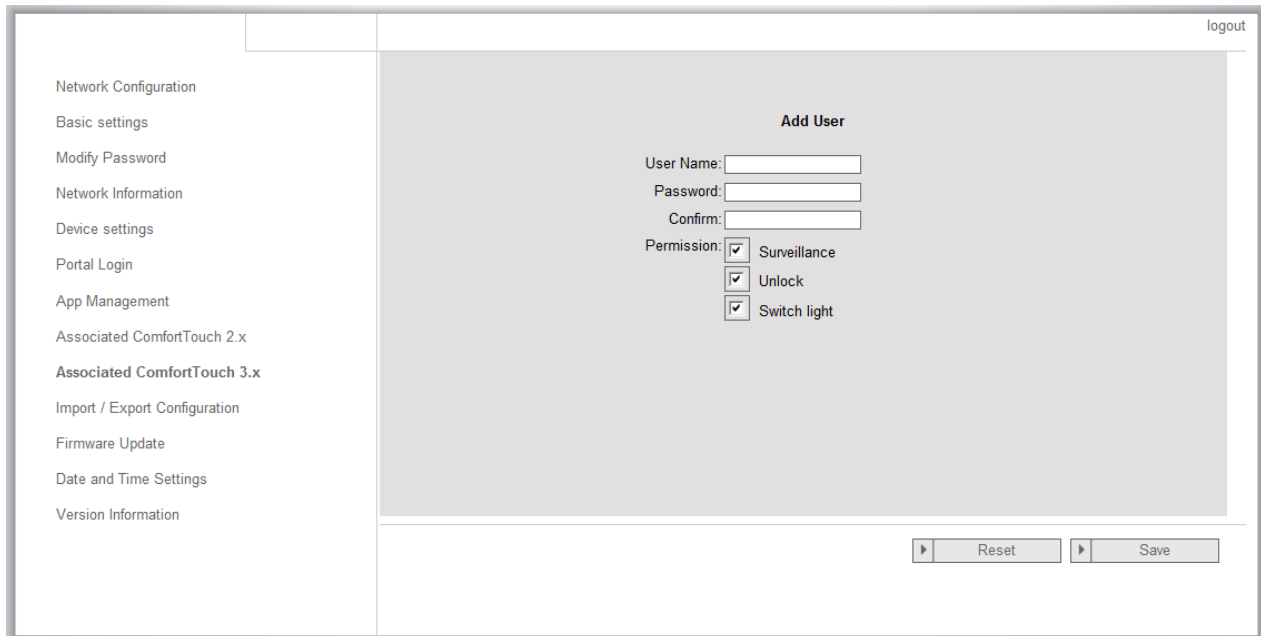


Fig. 17: "Add user" configuration page

The "Add user" configuration page opens.

User name

Enter the name of the new user in the "User name" input field.
A total of 3 different users with different roles can be created.

Password

Enter the required password of the new user in the "Password" input field.

Confirm

Enter the required password of the new user again in the "Confirm" input field.



Note

When specifying the user name, only use characters and numbers. ComfortTouch. Spaces and special characters are not allowed.

Permission

You can assign the following permissions to the user: surveillance, unlock, and switch light.

Surveillance

The user can use ComfortTouch to establish a video connection to the outdoor station without there being a door call.

Unlock

Specify if the door may or may not be opened by ComfortTouch.

Switch light

This function is only available if the lighting, e.g. the staircase lighting, can be switched on/off directly from the Welcome system.



Note

The lighting is connected by switch actuator. (M2305)

Save new user

1. Click the "Save" button.
The new user is saved.

Error! Use the Home tab to apply
标题 1 to the text that you want to
appear here.

6.10 "Import/Export configuration file" configuration page

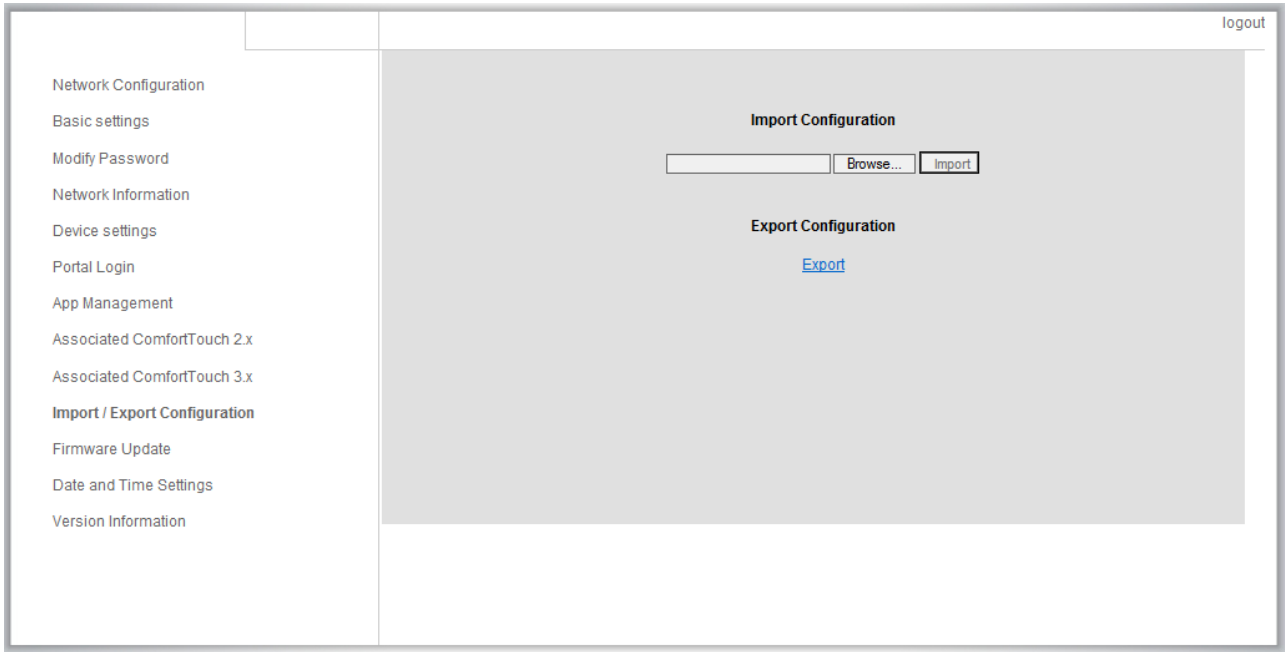


Fig. 18: "Import/Export configuration file" configuration page



Note
The option to create and replace an IP-Gateway configuration file is for service purposes. For details, please contact your electrical installer.

6.11 "Firmware Update" configuration page



Fig. 19: "Firmware Update" configuration page

The IP-Gateway has the option to manually update the device software.



Note

Device updates are not normally required and should only be carried out for troubleshooting purposes. To update the device, please contact your electrical installer.



Note

Before updating the firmware, always check if the update has a more recent that the software already installed. See the section "Version information."



Note

All settings of the IP-Gateway will be reset to the factory settings during the update. Please first note the details specified under basic settings and device settings.

Perform the following steps to update your device, if necessary.

1. Get the latest software from your electrical installer.
2. Log into the Web-Interface of the IP-Gateway with the username "admin" and the associated password.
3. Open menu item firmware update and upload the .tar file.
4. After the file has been sent to the IP-Gateway and installed on the device, the IP-Gateway is reachable again via the browser.
ATTENTION: This process may take up to 10 minutes. The device must not be disconnected from the power supply during this period.
5. Afterwards, the IP-Gateway can be taken into use again.
The user name and password have been reset to the factory settings admin and admin. Assign a new password if necessary.
Re-enter the configuration data (basic settings, device settings).

Set the time zone.



Note

In case of a fixed IP address, there is the possibility that the device has obtained a new address via DHCP after the software update.

For a new assignment of the IP address, please observe the details in chapter 5 of the IP-Gateway manual.

6.12 "NTP settings" configuration page

Fig. 20: "NTP settings" configuration page

The "NTP (Network Time Protocol) settings are used to define with which time signal the IP-Gateway is synchronized.

There are two options for synchronization:

Synchronization via the Internet

1. Select the Internet time (NTP) setting.
2. Add an NTP server.

Five NTP servers will be connected automatically one by one.

pool.ntp.org(default one)

time.nist.gov

ntp.Apple.com

time.windows.com

time-a.nist.gov

3. Set the time zone for your location.
4. Save your entries.



Note

In order to synchronize successfully, please make sure the Internet connection is available before power on.

Synchronization via **Busch-ComfortTouch**® 3.x or by mobile device

1. Select the setting from the App or **Busch-ComfortTouch**® 3.x.

The IP-Gateway takes its time settings from the panel or from a mobile end device.

6.13 "Version Information" configuration page



Fig. 21: "Version Information" configuration page

The "Version Information" configuration page provides information about the hardware and software components of the IP-Gateway and is required for service purposes or error diagnostics.



Note

Before updating the firmware, always check if the update has a more recent that the software already installed.

The firmware creation date is in the file name and version information in the format YYYYMMDD.

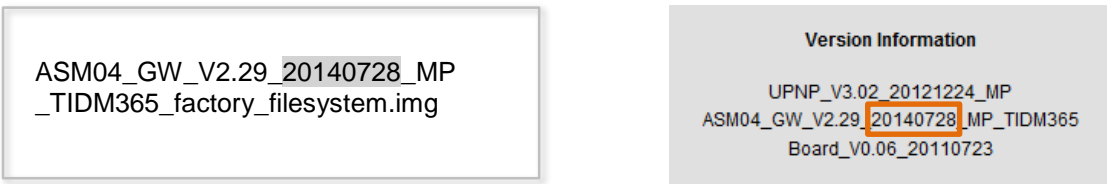


Fig. 22: Creation date, position of the firmware

Error! Use the Home tab to apply
标题 1 to the text that you want to
appear here.

7 Configuration for Telephone Gateway

Via one IP-Gateway, the computer or laptop can configure all parameters configured by telephone.

1. Enter the homepage:

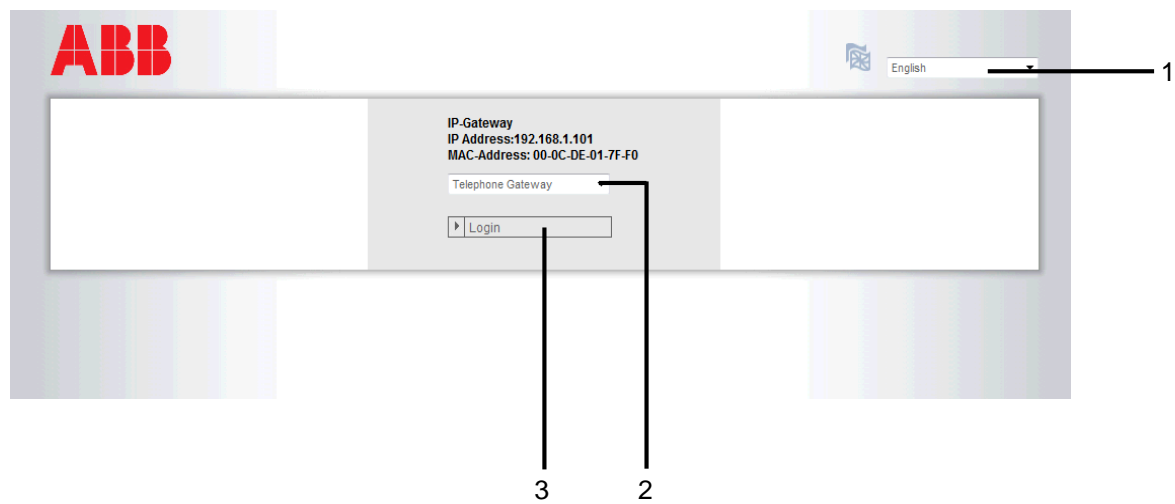


Fig. 23

No.	Function
1	The default language is English. Select flag for other language options.
2	Select Telephone Gateway from Device list
3	Click "Login" to enter the next level

2. Start searching the device

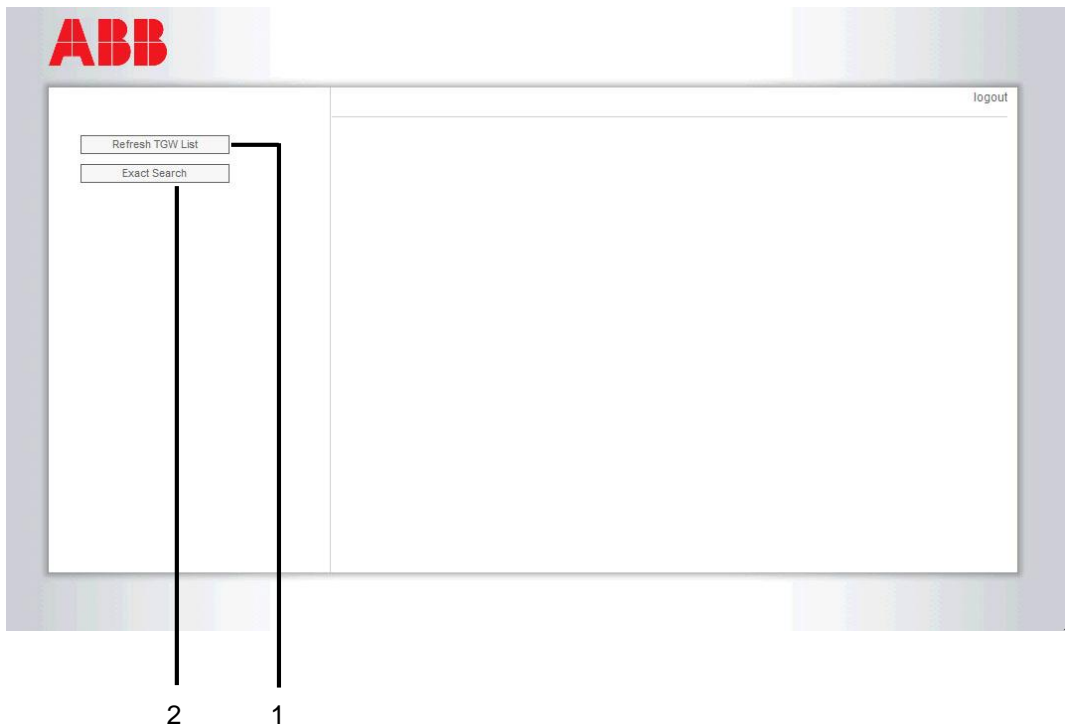


Fig. 24

No.	Function
1	Click "Refresh" to search all existed telephone gateways.
2	Click "Exact Search" to search the targeted telephone gateway. Telephone gateway number must be input first.

3. The result of seaching is displayed as follows:

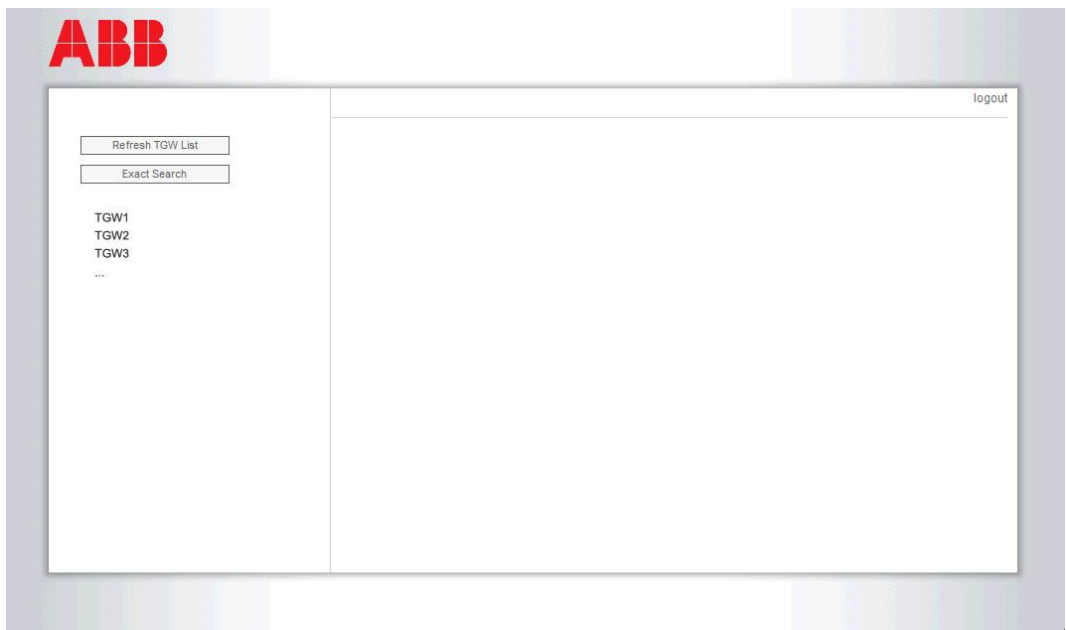


Fig. 25

4. Select a Telephone Gateway device in the list, and input the password. Default password: 1234.

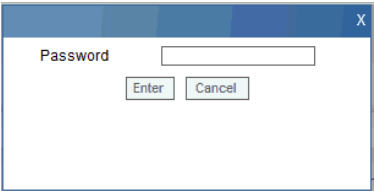


Fig. 26

5. If the password is correct, it will display as follows:

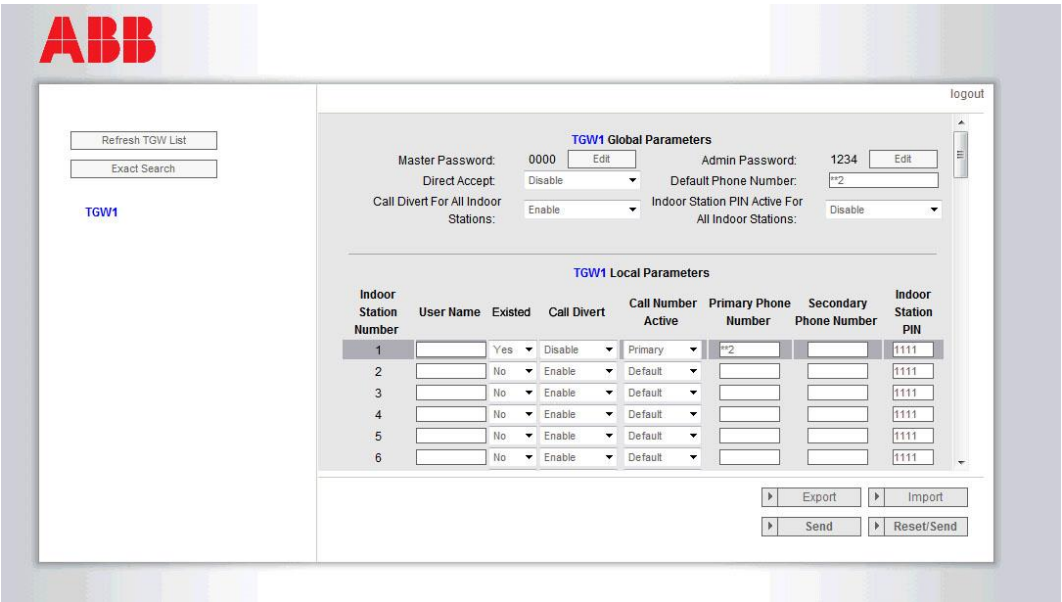


Fig. 27

No.	Function
1	Click "Edit" to change the passwords. (4 digits)
2	Installer can select "Enable" or "Disable" for Direct-accept from the list.
3	Installer can Enable/Disable "Call Divert for All Indoor Stations."
4	This Admin Password is used when user logs in at TGW.
5	Installer can edit Default Phone Number directly with maximum 16 digits.
6	Installer can Enable/Disable "Indoor Station PIN Active for all Indoor Stations."
7	All Indoor Station numbers are listed from 1 to 250.
8	Installer can select "Yes" or "No" from "Existed" according to actual installation. a. If "Yes" is selected, all parameters on its right can be edited. b. If "No" is selected, all parameters on its right is deleted, which means this Indoor Station is deleted from the Indoor Station address.
9	Installer can select "Enable" or "Disable" from "Indoor Station PIN Active."
10	Installer can select "Default" or "Primary" or "Secondary" from "Call Divert Number Active."
11	Installer can edit Primary and Secondary Phone Number, with maximum phone number is 16 digits.
12	Installer can edit Indoor Station PIN. (4 digits)

13	Click "Export", all current parameters of the telephone gateway are exported to *.txt. If the installer did modification but didn't click "Send", then click "Export", the original parameters are exported.
14	After imported, installer must click "Send" to send these parameters to telephone gateway. (This is only for replacement in field.)
15	Click "Import," to import parameters from a file in *.txt format. The file contains a JSON datastructure. To create a proper import file, export an example to have a template for the necessary structure.
16	Click "Reset & Send," and a double-confirmation window will pop up. a. Click on "OK" to reset to factory setting. Factory setting is also sent to telephone gateway. b. Click on "Back" to cancel.
17	Click on "Logout," and exit without sending the modification to telephone gateway.

8 Integrating mobile end devices with the Welcome App

You can add end devices to the ABB-Welcome system from the Welcome App. The Welcome® App is available in two versions and supports the iOS and Android operating systems.

You can download the ABB-Welcome App from Google Play or the Apple App Store by entering keyword "ABB Welcome".

8.1 Android version 4.0 or higher

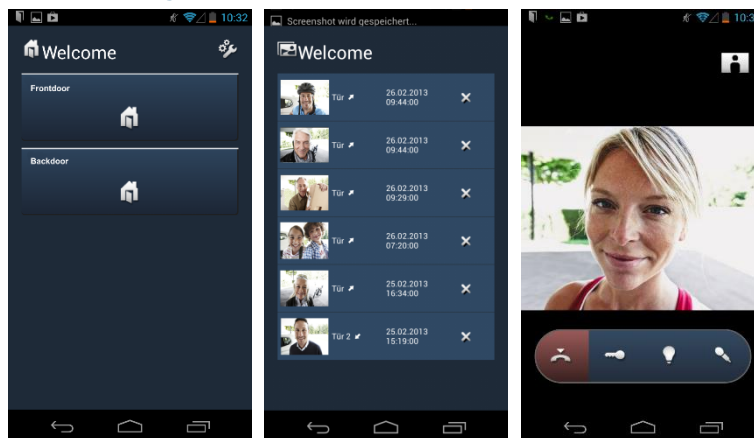


Figure. 28: Android Version 4.0 or higher

1. Install the Welcome® App from Google Play on your smartphone or tablet PC.
2. Open the App and enter your data for access to the myABB-LivingSpace portal.
3. Coupling the IP-Gateway and the App.
4. Set the permission of this App.

See section "App Management" for more details.

8.2 iOS version 4 or higher

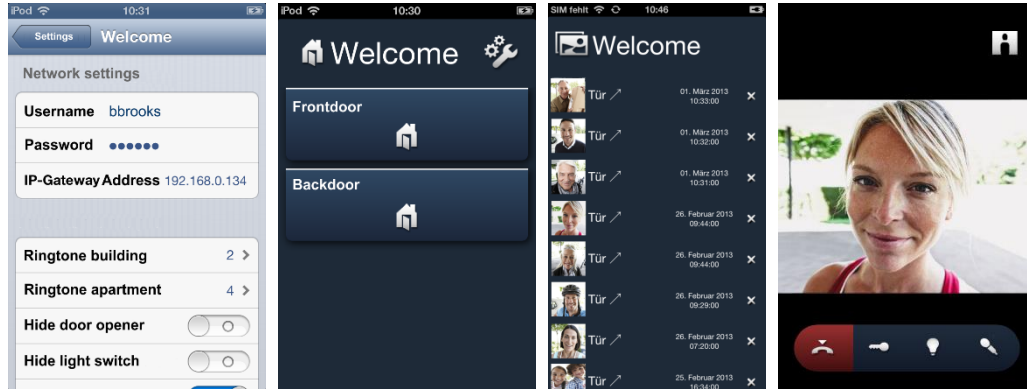


Fig. 29: iOS (Apple) version 4 or higher

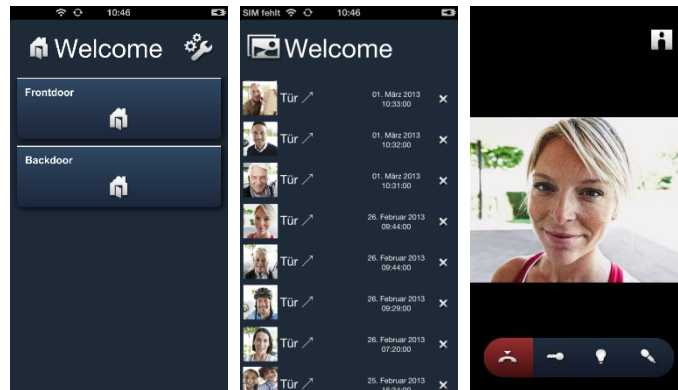


Fig. 30: iOS (Apple) version 5 or higher

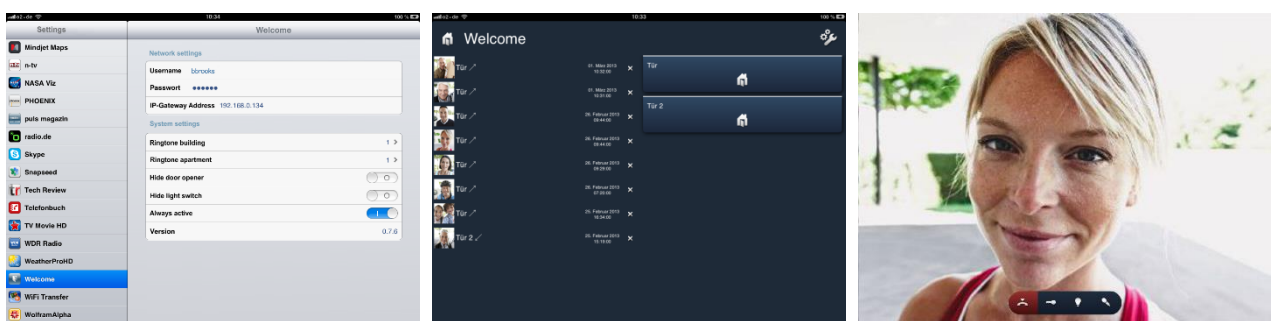


Fig. 31: iPad

1. Install the Welcome® App from the Apple App Store on your smartphone or tablet PC.
2. Open the App and enter your data for access to the myABB-LivingSpace portal.
3. Coupling the IP-Gateway and the App.
4. Set the permissions of this App.

See section "App Management" for more details.

9 Network security

This product is designed to be connected to and to communicate information and data via a network interface. It is your sole responsibility to provide and continuously ensure a secure connection between the product and the network. You shall establish and maintain any Appropriate measures (such as, but not limited to the installation of firewalls, Application of authentication measures, encryption of data, installation of anti-virus programs, etc.) to protect the product, the network, its system and the interface against any kind of security breaches, unauthorized access, interference, intrusion, leakage and/or theft of data or information. ABB and its entities are not liable for damages and/or losses related to such security breaches, any unauthorized access, interference, intrusion, leakage and/or theft of data or information.

10 Integrating a **Busch-ComfortTouch**® 3.0 or higher

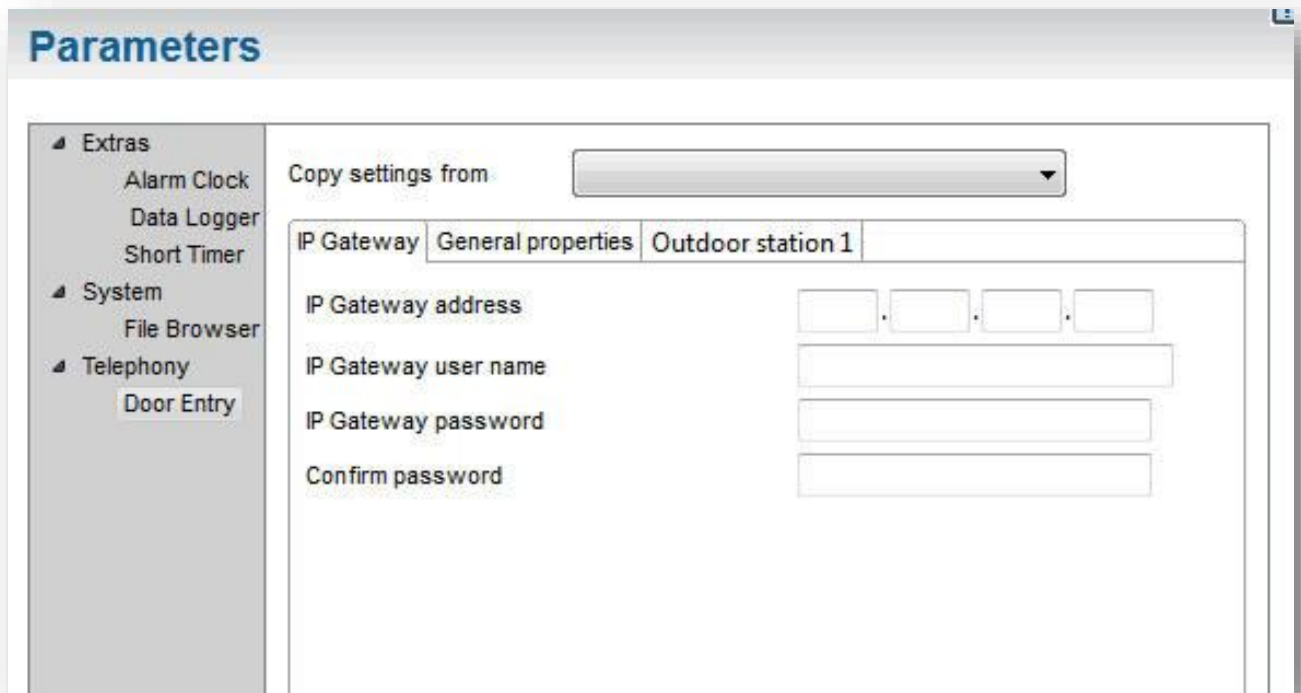


Fig. 32: Integrating **Busch-ComfortTouch**® 3.0 or higher

The **Busch-ComfortTouch**® series 3.0 or higher can be connected to a Busch-Welcome® system directly via the IP-Gateway.

1. Create a user, e.g. ComfortTouch1, in the IP-Gateway. See section "Create new user."
2. Create a configuration project in IPP 3.x for the **Busch-ComfortTouch**®, a "Door Entry" Application page.
3. Enter the "IP-Gateway address" and user in the "IP-Gateway" tab.



Note ...

A detailed user description is available in the IPP online help.

11 Technical data

11.1 Overview table

General	
Operating temperature	-25 °C - +55 °C
Protection type (only for related installation)	IP20
Single-wire clamps	2 x 0.28 - 2 x 0.75 mm²
Fine-wire clamps	2 x 0.28 - 2 x 0.75mm²
Size	10 U
Bus input voltage	20-30 V DC

11.2 Device connection / circuit diagram

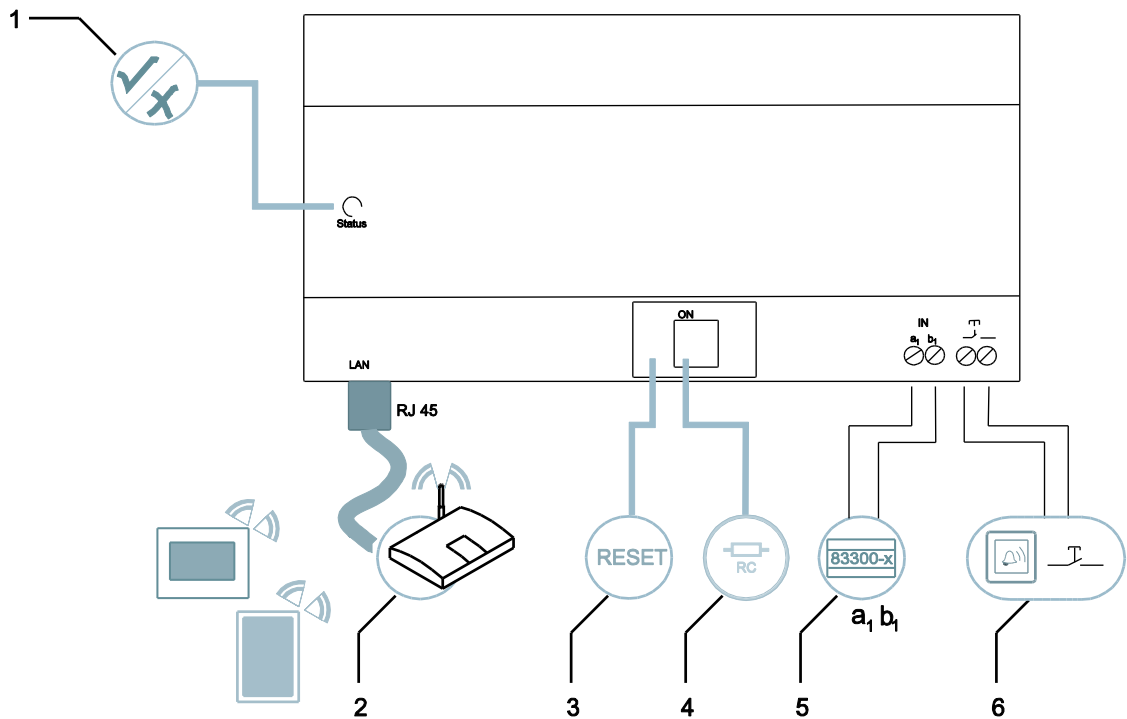


Fig. 33: Connection

1 LED | 2 LAN connection | 3 Reset | 4 Terminal resistor | 5 System controller / internal bus | 6 Floor call button

LED

	ready
	Bus activity
	Fault

LAN connection

The LAN connection is made via the RJ 45 jack on the WLAN router.

Reset

Here is the Reset button.

System controller / internal bus

a1	System controller
b1	Internal bus

Floor call button

The floor call button is connected here.

11.3 Dimensions / dimensional drawing

The dimensions of the IP-Gateway are indicated in the following image.

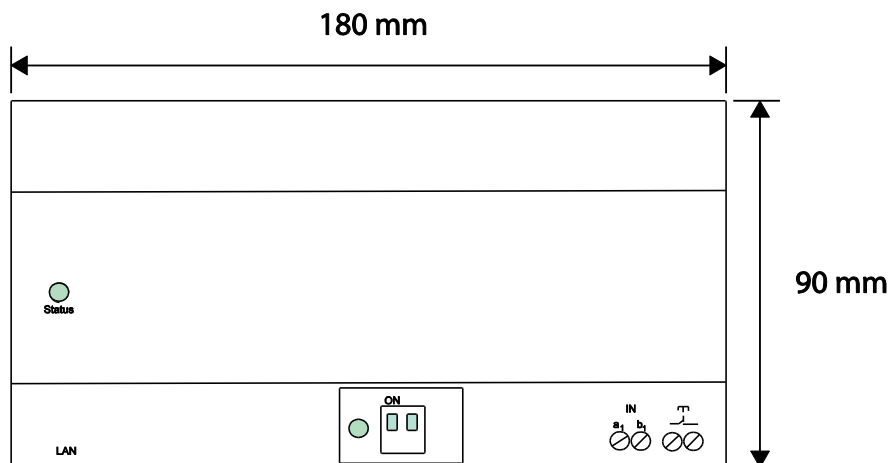


Fig. 34: Dimensional drawing

The depth of the device is 65 mm.

The module width is 10 MW.

12 Product overview

12.1 Device setup

The IP-Gateway is a Welcome door communication system and is used for door communication and video transmission.

- The IP address makes communication possible between the Welcome door communication and the local IP network.
- It also allows use of the **Busch-ComfortTouch®** as door communication indoor station and a Welcome App.
- The product connects to the myABB-LivingSpace Internet portals. It can be used to configure other Welcome products using a web browser.

13 Installation and electrical connection



Warning

Electric voltage!

Risk of death due to electrical voltage of 100-240 V during short-circuit in the low-voltage line.
– Low-voltage and 100-240 V lines must not be installed together in a flush-mounted socket!

13.1 Requirements for the electrician



Warning

Electric voltage!

Install the device only if you have the necessary electrical engineering knowledge and experience.

- Incorrect installation endangers your life and that of the user of the electrical system.
- Incorrect installation can cause serious damage to property, e.g. due to fire.

The minimum necessary expert knowledge and requirements for the installation are as follows:

- Apply the "five safety rules" (DIN VDE 0105, EN 50110):
 1. Disconnect from power;
 2. Secure against being re-connected.
 3. Ensure there is no voltage.
 4. Connect to earth and short-circuit.
 5. Cover or barricade adjacent live parts.
- Use suitable personal protective clothing.
- Use only suitable tools and measuring devices.
- Check the supply network type (TN system, IT system, TT system) to secure the following power supply conditions (classic connection to ground, protective earthing, necessary additional measures, etc.).



Warning

Electric voltage!

Risk of death and fire due to electrical voltage of 100-240 V.

- Work on the 100-240V supply system may only be performed by authorized electricians!
- Disconnect the mains power supply prior to installation and/or disassembly!

13.2 Mounting

The MDRC must only be installed on mounting rails according to DIN EN 500022. The MDRC is latched onto the mounting rail.

Error! Use the Home tab to apply
标题 1 to the text that you want to
appear here.

Notice

We reserve the right to make technical or content changes to this document at any time, without prior notice.

The detailed specifications agreed to at the time of ordering Apply to all orders. ABB accepts no responsibility for possible errors or incompleteness in this document.

We reserve all rights to this document and the topics and illustrations contained therein.

The document and its contents, or excerpts thereof, must not be reproduced, transmitted or reused by third parties without prior written consent by ABB.