



viaFlex senso  
Visualisation software for  
viaFlex emergency lighting.

**KAUFEL**

Power and productivity  
for a better world™



# viaFlex senso. Your safety is always a priority.

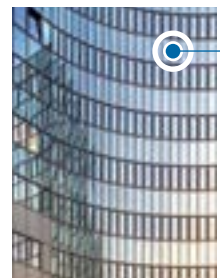
Emergency systems nowadays are becoming increasingly complex and are placing ever greater demands on companies. This is also true for emergency lighting. The basis for responding promptly and preventing accidents is to quickly know at any time what is happening where, and when.

The viaFlex senso visualisation software offers numerous benefits in order to operate your buildings and systems optimally and as cost-effectively as possible – irrespective of your industry and company size.

viaFlex senso is an innovative software solution that helps you stay on top of your emergency lighting at all times. Various features such as automatic system tests, convenient inspection and maintenance as well as numerous visualisation

options simplify your daily work and reduce the complexity of the system. We thus not only help you to maximise security in your company, but to save time and costs too. viaFlex senso gives you the highest level of reliability and convenience.

## Exemplary application in various industries and company sizes



A single system in one building



A highly complex system across multiple sites



Complex configuration with multiple viaFlex systems

# One software for any circumstances. Your benefits in detail.



## Everything at a glance

- clear visualisation of the entire emergency lighting system at all times at a central location
- quick information through a variety of display options (tables, graphics, layouts, colour representation of states)
- reliable monitoring of up to 32 viaFlex central battery systems with up to 240 substations each and a total of more than 600,000 lights on one screen



## Simple setup and configuration

- fully automatic recognition of the viaFlex system with all connected components and creation of the image via plug & play
- fast positioning of the components in the layout from the senso Explorer using drag & drop
- intuitive user interface
- individual configuration options: including free design of surfaces, processes and rights management



## Instant alerting

- timely display of alarms, messages and status changes of all system components
- immediate notification to the responsible persons via email or SMS
- texts with specific recommendations for structured alarm processing



## Comprehensive documentation

- complete logging of all status and fault messages and the automatic function tests
- message and alarm storage with extensive filtering and selection options (compliant with standards, electronic log book)
- various printing and file export options



## Outstanding convenience

- convenient remote monitoring and control of the system directly from the workstation in the control centre
- automatic or manual activation of various functional tests
- simple visualisation, processing and acknowledgement of messages



## Prompt orientation in case of failure

- prompt pinpointing of faults, e.g. through integration of layouts, site plans and maps
- representation of all components showing the current state in graphics or tree structures
- visual and audible notification with date and time, detector type, type of fault, note and recommended course of action



## Huge cost and time savings

- Efficient optimisation of processes including the following:
- monitoring across sites
  - simplified inspection through automated testing and reduction of patrols
  - more efficient maintenance and upkeep
  - faster troubleshooting through specific action plans and easy fault pinpointing
  - automatic documentation
  - systematic deployment of technicians and installers



## Diverse options

- expandable by interfaces to other building management systems, such as access control, fire alarm systems, video surveillance, etc., as viaFlex senso is based on the globally used WinGuard platform
- graphics editor allows integration of building layouts and other graphics in a variety of formats for full functionality in CAD connections
- integration of multiple workstations in a network
- Connection of an OPC server

# Contact

## **ABB Kaufel GmbH**

Colditzstraße 34 – 36

12099 Berlin

Phone: +49 (0) 30 70173 3300

Fax: +49 (0) 30 70173 3399

Email: [kaufel.germany@tnb.com](mailto:kaufel.germany@tnb.com)

**[www.kaufel.de](http://www.kaufel.de)**

## **Central customer service, order and fault hotline:**

Phone: +49 (0) 30 700 KD KAUFEL \*

Phone: +49 (0) 30 700 53 52 83 - 35\*

Fax: +49 (0) 30 700 53 52 83 - 36\*

\*max. 12ct./min. from German landlines

## **Note**

We reserve the right, to make technical changes or modify the contents of this document without prior notification.

ABB accepts no liability for any errors or missing information in this document. We reserve all rights pertaining to this document and the relevant content and illustrations contained therein.

Any reproduction, forwarding to third parties or utilisation of the contents – in whole or in part – is prohibited without the prior consent of ABB.

Copyright 2015 ABB – All rights reserved.