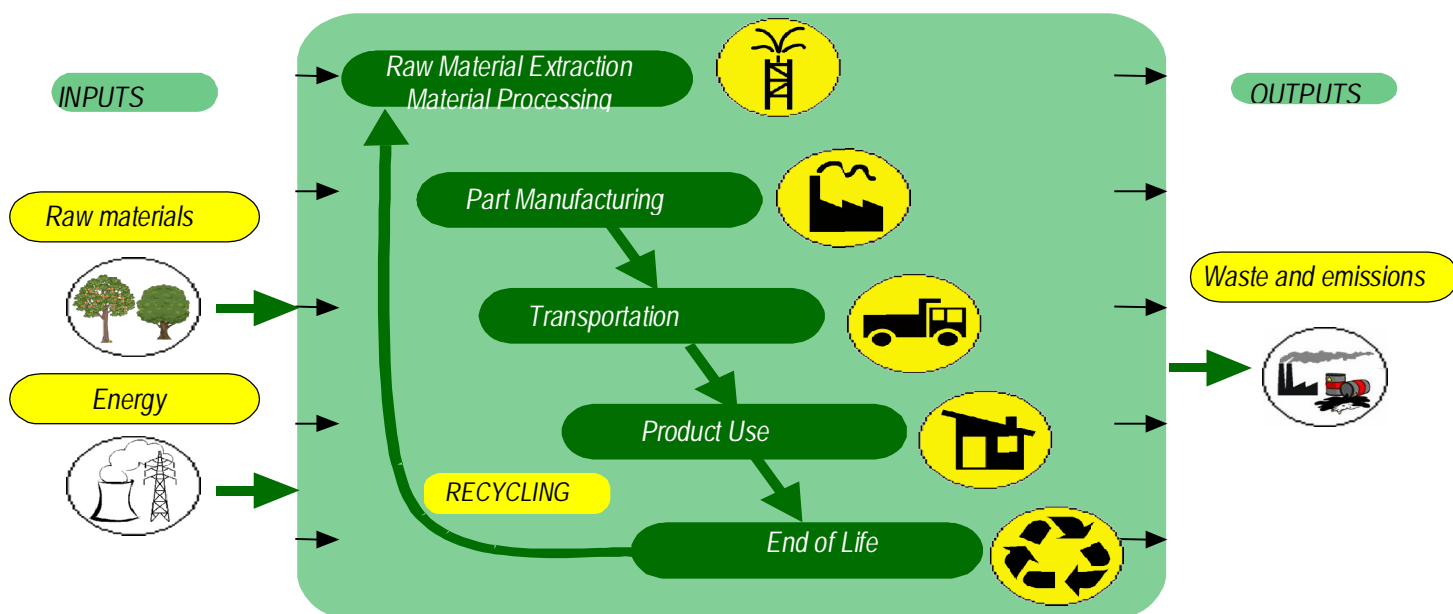
 Asea Brown Boveri, S.A. LPWA Wiring Accessories NIESSEN Factory	Communication to the agents involved in the life cycle	DOC 42-03-04 Revisión Nº 2 Enero 2013
---	---	--

Our policy of continuous improvement also requires a demanding and responsible work, which has led to the implementation of the UNE-EN-ISO 14006: Environmental management systems Guidelines for incorporating ecodesign in our Quality Management System and Environment.


Ecodesign is understood as a process integrated within the design and development that aims to reduce environmental impacts and continually to improve the environmental performance of the products, throughout their life cycle from raw material extraction to end of life.

In order to be of benefit to our organization and to ensure that we achieve our environmental objectives, we carry out ecodesign as an integral part of the business operations of our organization.



So in 2007 Asea Brown Boveri, S.A. NIESSEN factory, certify the Environmental Management Design and Development process according to UNE 150301. To subsequently adapt the system to the international standard UNE EN ISO 14006.



 Asea Brown Boveri, S.A. LPWA Wiring Accessories NIESSEN Factory	Communication to the agents involved in the life cycle	DOC 42-03-04 Revisión N° 2 Enero 2013
---	---	--

1 - CONSIDERATIONS FOR USE OF ECODESIGNED PRODUCTS

Millenium range

- Make strong electrical connections; this will prevent heat loss in connections, and unnecessary energy consumption.
- Recycle cardboard packaging.

2 - CONSIDERATIONS FOR RECYCLING:

- The plastics are recyclable, and they include a marking inside (indicating the material they are made of). They can be disassembled.

3 - ENVIRONMENTAL IMPROVEMENTS:

- Elimination of use of halogenated flame retardants, by using halogen-free materials.
- Minimum cardboard for recyclable packaging
- Minimum number of components, thereby savings in energy and raw materials in manufacturing processes.
- Use of water based paints, avoiding the use of solvents harmful to the environment.
- Use of signaling lights for switches with LED technology involving energy savings up to 25%. Longer life of the LED to other lighting alternatives.



Asea Brown Boveri, S.A.
LPWA Wiring Accessories
NIESSEN Factory

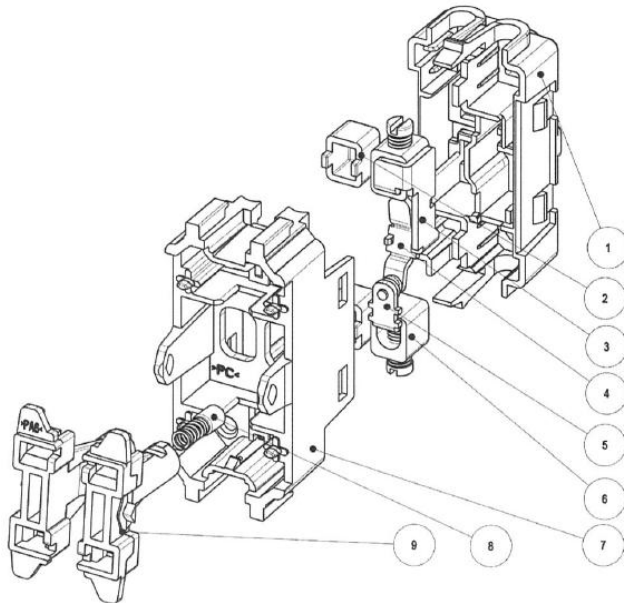
Communication to the agents
involved in the life cycle

DOC 42-03-04

Revisión Nº 2
Enero 2013

Switches

Single pole switches (for example 1G1W – Push button) 10 Amps and 20 Amps



- | | |
|---------------------|--|
| 1 – Base | PA |
| 2 - Terminal | Brass |
| 3 – Support Contact | Brass for 10 Amps and copper for 20 Amps |
| 4 – Mobile contact | Brass for 10 Amps and copper for 20 Amps |
| 5 – Fixed Contact | Brass for 10 Amps and copper for 20 Amps |
| 6 – Terminal | Brass |
| 7 - Cover support | PC |
| 8 – Python + spring | PA + Steel |
| 9 – Knob (Rocker) | PA |



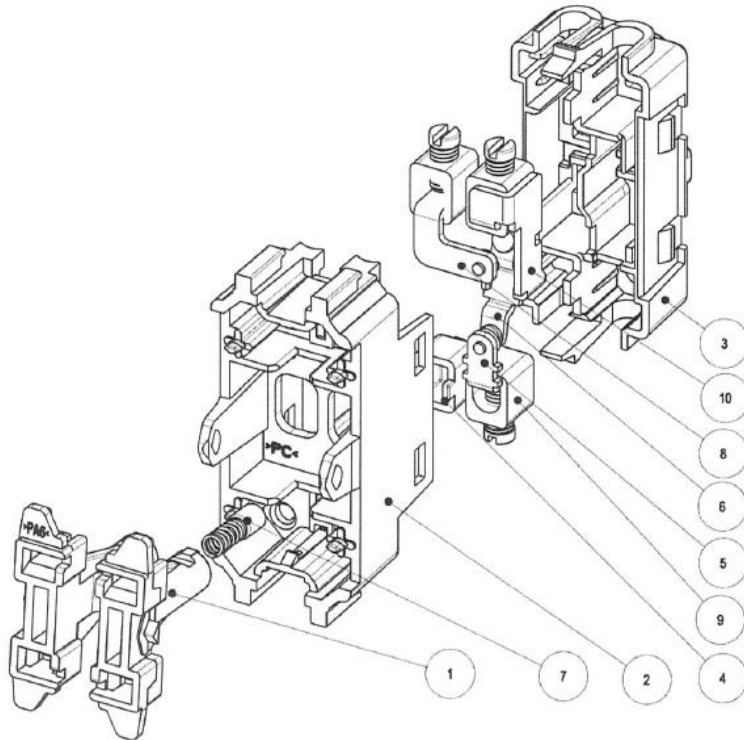
Asea Brown Boveri, S.A.
LPWA Wiring Accessories
NIESSEN Factory

Communication to the agents
involved in the life cycle

DOC 42-03-04

Revisión Nº 2
Enero 2013

Two way switches (for example 1G2W) 10 Amps and 20 Amps



1 – Knob (Rocker)

2 - Cover support

3 – Base

4 – Cap

5 – Fixed Contact

6 – Mobile contact

7 – Python + Spring

8 - Two way switch contact

9 – Terminal

10– Support Contact

PA

PC

PA

PA

Brass for 10 Amps and copper for 20 Amps

Brass for 10 Amps and copper for 20 Amps

PA + Steel

Brass for 10 Amps and copper for 20 Amps

Brass

Brass for 10 Amps and copper for 20 Amps



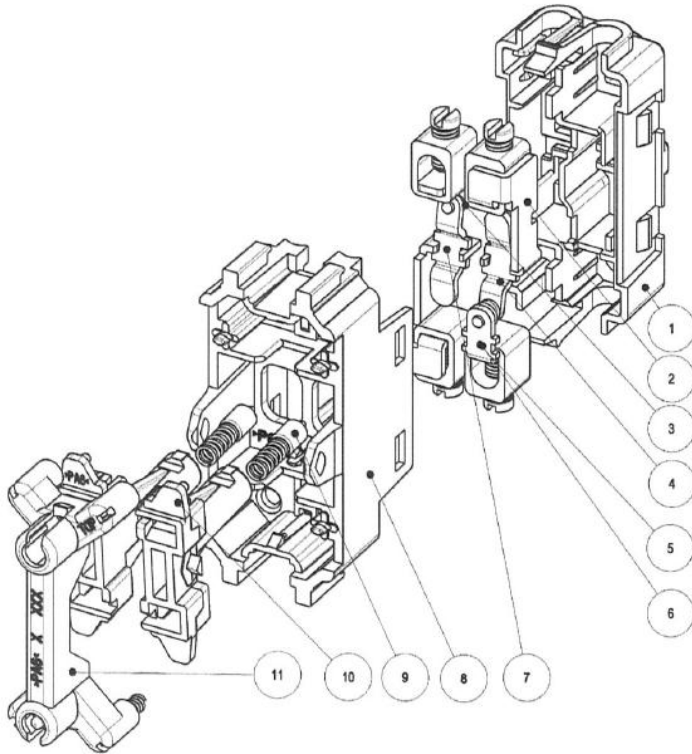
Asea Brown Boveri, S.A.
LPWA Wiring Accessories
NIESSEN Factory

Communication to the agents
involved in the life cycle

DOC 42-03-04

Revisión N° 2
Enero 2013

Double pole Switches 10 Amps and 20 Amps



- | | |
|---------------------|--|
| 1 – Base | PA |
| 2 – Support Contact | Brass for 10 Amps and copper for 20 Amps |
| 3 – Terminal | Brass |
| 4 – Mobile contact | Brass for 10 Amps and copper for 20 Amps |
| 5 – Fixed Contact | Brass for 10 Amps and copper for 20 Amps |
| 6 – Screw | Iron |
| 7 – Mobile contact | Brass for 10 Amps and copper for 20 Amps |
| 8 – Cover support | PC |
| 9 – Python+ spring | PA + Steel |
| 10 – Knob (Rocker) | PA |
| 11 – LED | PA and electronic components |



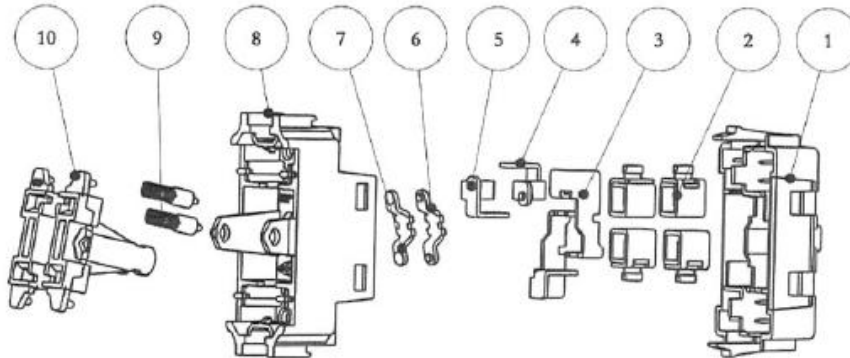
Asea Brown Boveri, S.A.
LPWA Wiring Accessories
NIESSEN Factory

Communication to the agents
involved in the life cycle

DOC 42-03-04

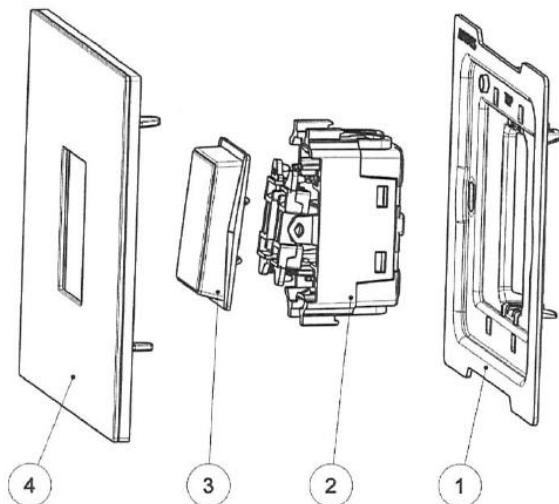
Revisión Nº 2
Enero 2013

Intermediate switches 10 Amps



- | | |
|----------------------------|--------------|
| 1 – Base | PA |
| 2 – Terminal + Screw | Brass + Iron |
| 3 – Support Contact | Brass |
| 4 – Intermediate contact 1 | Brass |
| 5 – Intermediate contact 2 | Brass |
| 6 – Mobile contact | Brass |
| 7 – Mobile contact | Brass |
| 8 – Cover support | PC |
| 9 – Python+ spring | PA + Steel |
| 10 – Knob (Rocker) | PA |

1 module Switches 10 Amps and 20 Amps



- | | |
|----------------|------------------------------|
| 1 - Metal grid | Iron |
| 2 – Switch | (described above) |
| 3 – Rocker | ABS chrome + Stainless Steel |
| 4 – Frame | PC + Stainless Steel |



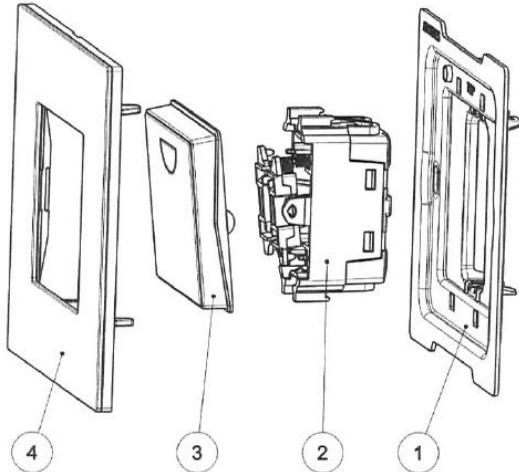
Asea Brown Boveri, S.A.
LPWA Wiring Accessories
NIESSEN Factory

Communication to the agents
involved in the life cycle

DOC 42-03-04

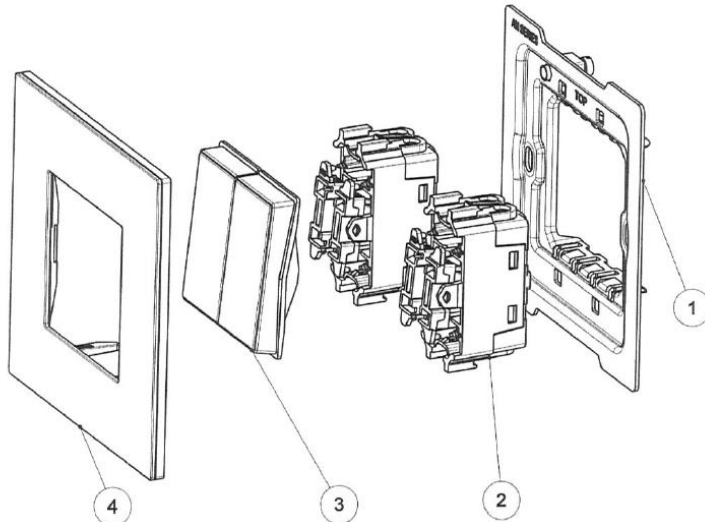
Revisión Nº 2
Enero 2013

2 modules Switches 10 Amps and 20 Amps



- 1 - Metal grid
 - 2 - Switch
 - 3 - Rocker
 - 4 - Frame
- Iron
(described above)
ABS chrome + Stainless Steel
PC + Stainless Steel

2G2W Switches 10 Amps and 20 Amps



- 1 - Metal grid
 - 2 - Switch
 - 3 - Rocker
 - 4 - Frame
- Iron
(described above)
ABS chrome + Stainless Steel
PC + Stainless Steel



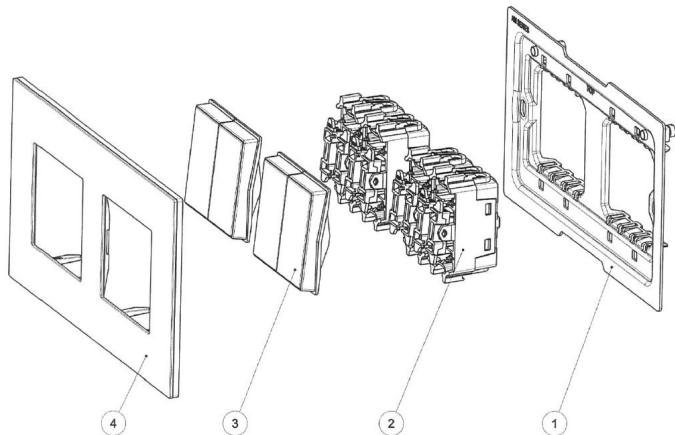
Asea Brown Boveri, S.A.
LPWA Wiring Accessories
NIESSEN Factory

Communication to the agents
involved in the life cycle

DOC 42-03-04

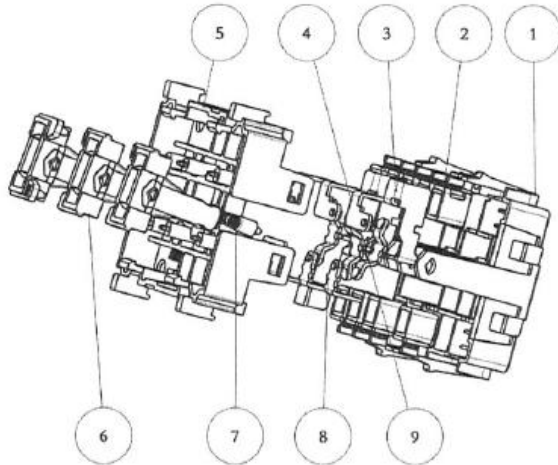
Revisión Nº 2
Enero 2013

4G2W switches 10 Amps and 20 Amps



- | | |
|----------------|------------------------------|
| 1 - Metal grid | Iron |
| 2 - Switch | (described above) |
| 3 - Rocker | ABS chrome + Stainless Steel |
| 4 - Frame | PC + Stainless Steel |

3G2W 1 Module 10Amps and 16 Amps



- | | |
|----------------------------|--------------|
| 1 - Base | PA |
| 2 - Terminal + Screw | Brass + Iron |
| 3 - Support Contact | Brass |
| 4 - Fixed Contact | Brass |
| 5 - Cover support | PC |
| 6 - Knob (Rocker) | PA |
| 7 - Python+ spring | PA + Steel |
| 8 - Two way switch contact | Brass |
| 9 - Mobile contact | Brass |



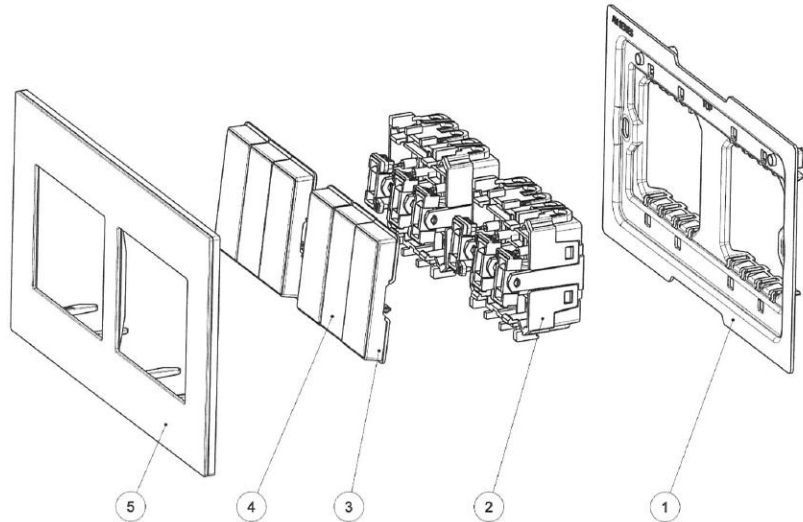
Asea Brown Boveri, S.A.
LPWA Wiring Accessories
NIESSEN Factory

Communication to the agents
involved in the life cycle

DOC 42-03-04

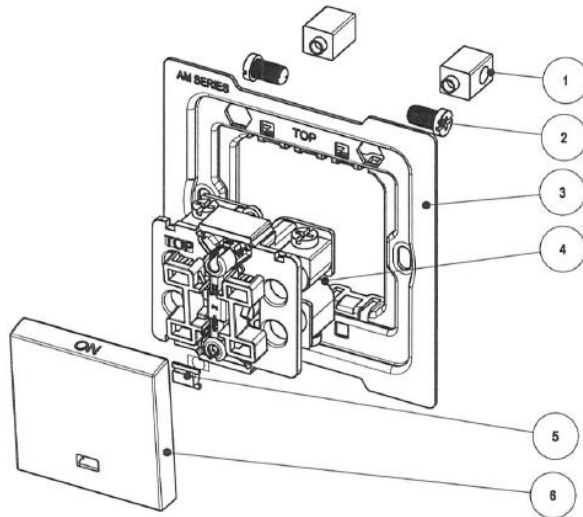
Revisión Nº 2
Enero 2013

6G2W switches 10Amps and 16 Amps



- | | |
|--------------------|----------------------|
| 1 - Metal grid | Iron |
| 2 - Switch | (described above) |
| 3 - Plastic Rocker | ABS chrome |
| 4 - Metal Rocker | Stainless Steel |
| 4 - Frame | PC + Stainless Steel |

45A Double pole switch



- | | |
|----------------------------|-------------------|
| 1 - Terminals for earthing | Brass |
| 2 - Screw for terminals | Iron |
| 3 - Metal grid | Iron |
| 4 - Switch | (described above) |
| 5 - Lens for light of LED | PC |
| 6 - Rocker | PC |



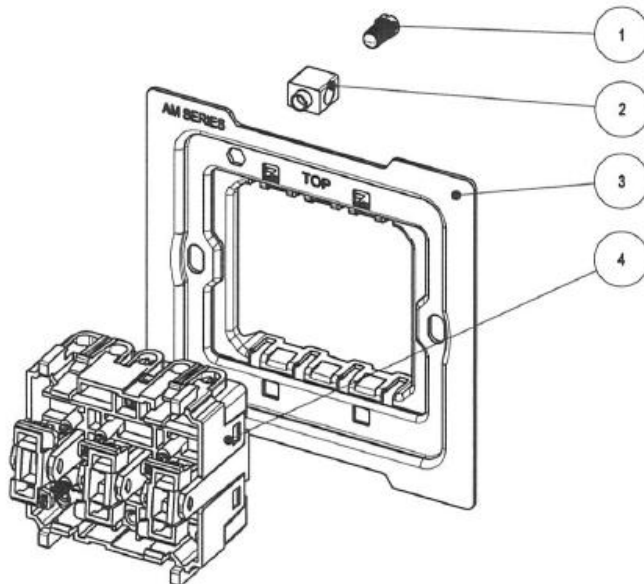
Asea Brown Boveri, S.A.
LPWA Wiring Accessories
NIESSEN Factory

Communication to the agents
involved in the life cycle

DOC 42-03-04

Revisión Nº 2
Enero 2013

3 pole fan isolator



- 1 – Screw for terminal
- 2 – Terminals for earthing
- 3 – Metal grid
- 4 – Switch

Iron
Brass
Iron
(described above)



Asea Brown Boveri, S.A.
LPWA Wiring Accessories
NIESSEN Factory

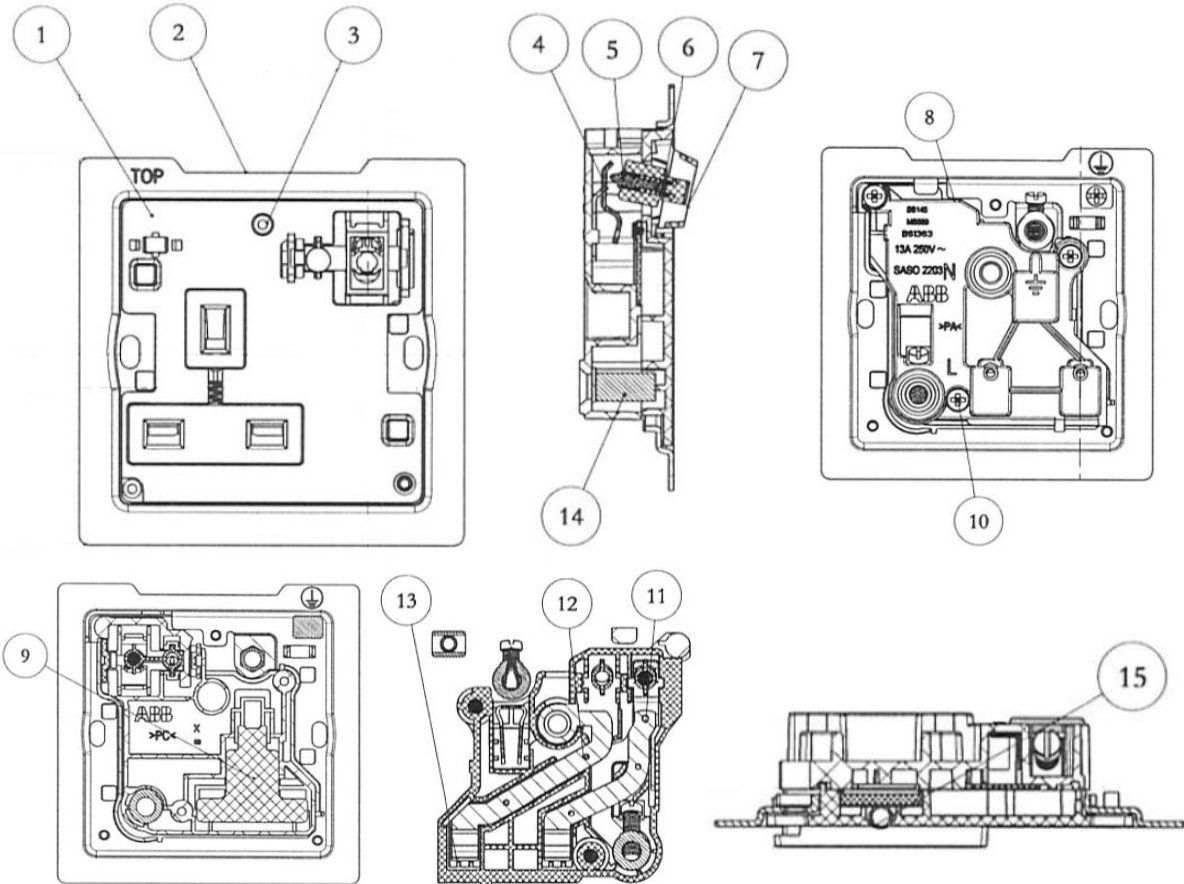
Communication to the agents
involved in the life cycle

DOC 42-03-04

Revisión N° 2
Enero 2013

Sockets outlets

1G single pole switched, and double pole switched 13Amps



- | | |
|---------------------------------|-------|
| 1 – Cover | PC |
| 2 – Metal grid | Iron |
| 3 – Rivets | Brass |
| 4 - Mobile contact | Brass |
| 5 – Python | PA |
| 6 - Spring | Steel |
| 7 - Knob (Rocker) | PA |
| 8 – Base | PA |
| 9 – Shutter (Blind) | PA |
| 10 – Screw | Iron |
| 11 – N contact1 | Brass |
| 12 – L contact1 | Brass |
| 13 – L contact2 | Brass |
| 14 – Terminal for L and N | Brass |
| 15 – Spring for Shutter (Blind) | Steel |



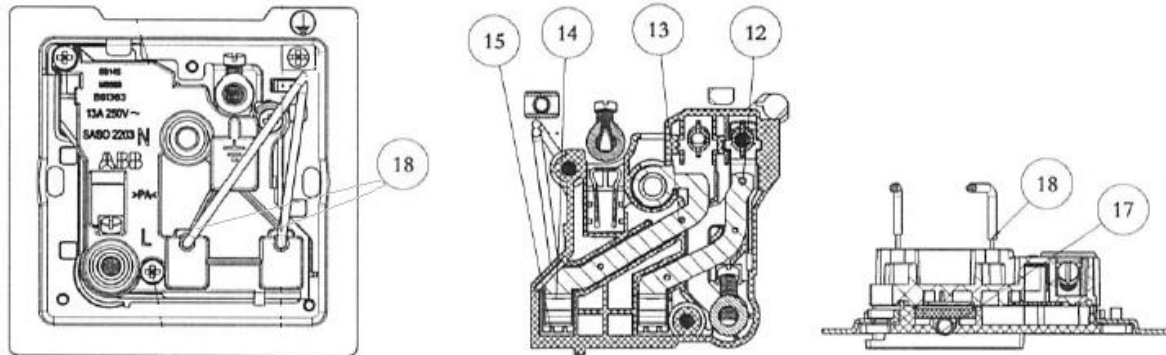
Asea Brown Boveri, S.A.
LPWA Wiring Accessories
NIESSEN Factory

Communication to the agents
involved in the life cycle

DOC 42-03-04

Revisión N° 2
Enero 2013

1G single pole switched with LED 13Amps, and double pole switched with LED 13Amps



From number 1 to number 14 are the same that 1G single pole switched, and double pole switched 13Amps.

15 – Spring for connect LED

17 – Spring for Blind

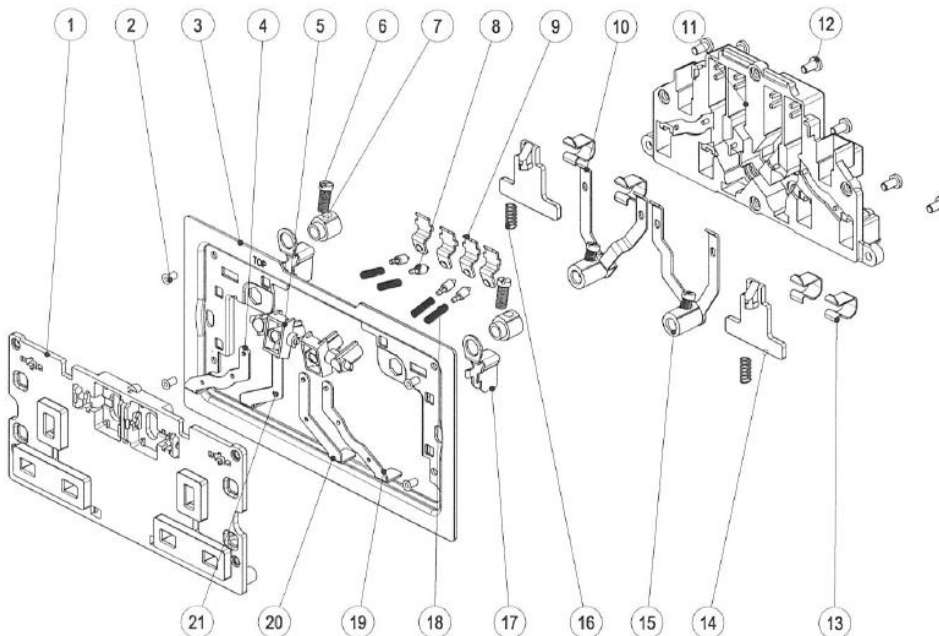
18 – Wiring for LED

Steel

Steel

Copper

2G double pole switched 13Amps



- 1 – Cover
- 2 – Rivets
- 3 – Metal grid
- 4 – L contact
- 5 - Knob (Rocker)
- 6 – Screw
- 7 – Terminal

- PC
- Brass
- Iron
- Brass
- PA
- Iron
- Brass



Asea Brown Boveri, S.A.
LPWA Wiring Accessories
NIESSEN Factory

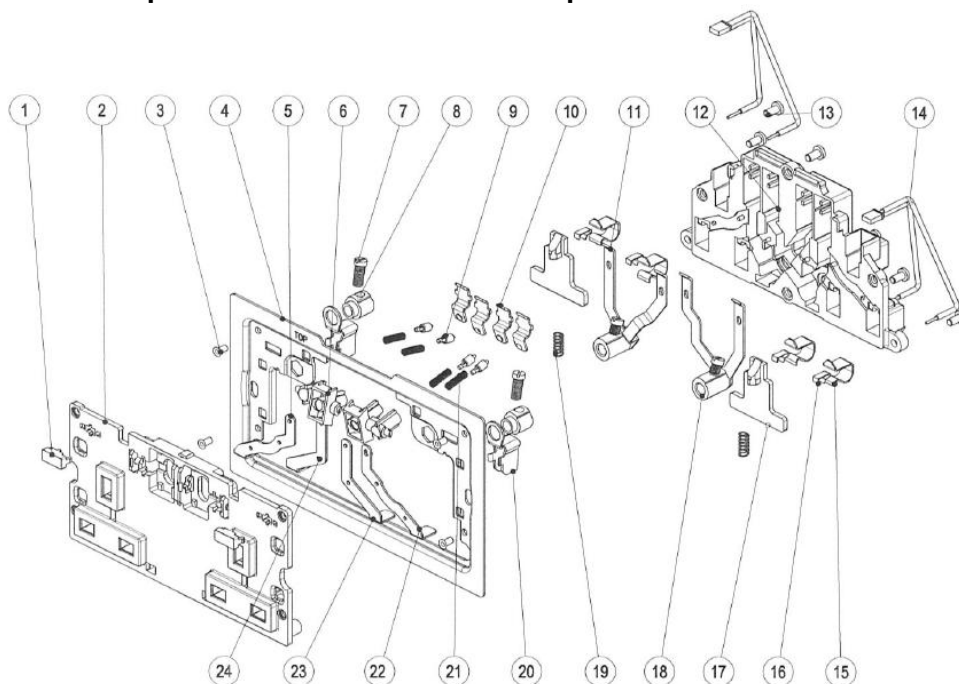
Communication to the agents
involved in the life cycle

DOC 42-03-04

Revisión N° 2
Enero 2013

8 - Python	PA
9 - Mobile contact	Brass
10 - Terminal and contacts for socket 1	Brass
11 - Base	PA
12 - Rivets	Brass
13 - Contacts	Brass
14 - Shutter (Blind)	PA
15 - Terminal and contacts for socket 2	Brass
16 - Spring for Shutter (Blind)	Steel
17 - Contact for earth (security)	Brass
18 - Metal grid	Iron
19 - Contact for switch 2	Brass
20 - Contact for switch 2	Brass
21 - Contact for switch 1	Brass

2G double pole switched with LEDs 13Amps



It is the same that 2G double pole switched 13Amps, but with more components

1 - Display for LED	PC
14 - LED	PC and copper wire
16 - Spring for LED	Steel



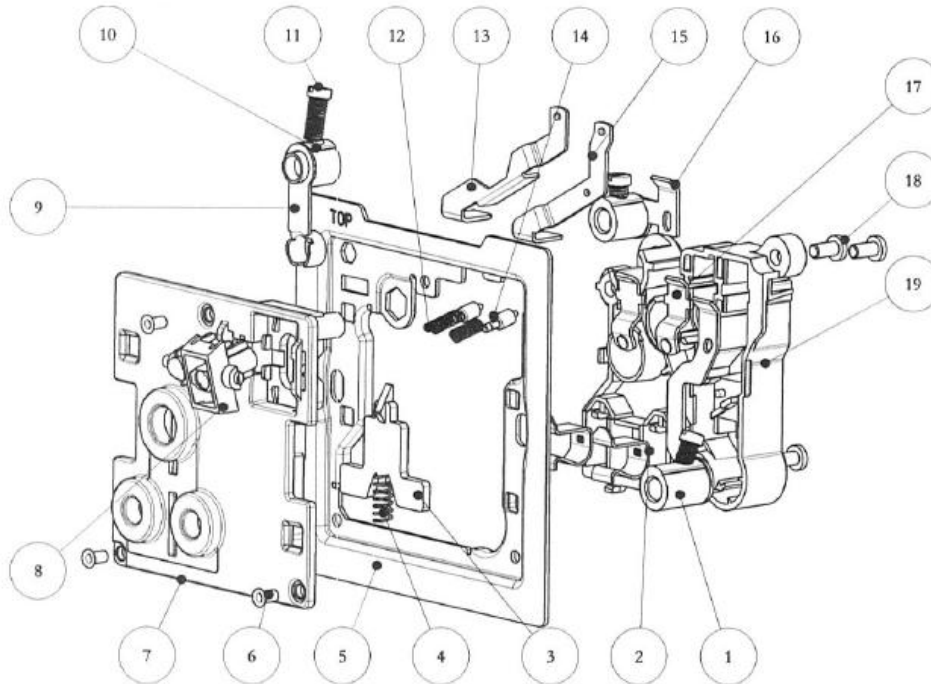
Asea Brown Boveri, S.A.
LPWA Wiring Accessories
NIESSEN Factory

Communication to the agents
involved in the life cycle

DOC 42-03-04

Revisión Nº 2
Enero 2013

1G double pole switched 5Amp



- | | |
|------------------------|-------|
| 1 – Terminal | Brass |
| 2 – Contact | Brass |
| 3 – Shutter (blind) | PA |
| 4 – Spring for Shutter | Steel |
| 5 – Metal grid | Iron |
| 6 - Rivets | Brass |
| 7 – Cover | PC |
| 8 - Knob (Rocker) | PA |
| 9 – Line contact | Brass |
| 10 – Terminal | Brass |
| 11 – Screw | Iron |
| 12 – Spring | Steel |
| 13 – Switch contact | Brass |
| 14 – Python | PA |
| 15 – Switch contact | Brass |
| 16 – Support contact | Brass |
| 17 – Mobile contact | Brass |
| 18 – Rivets | Brass |
| 19 – Base | PA |



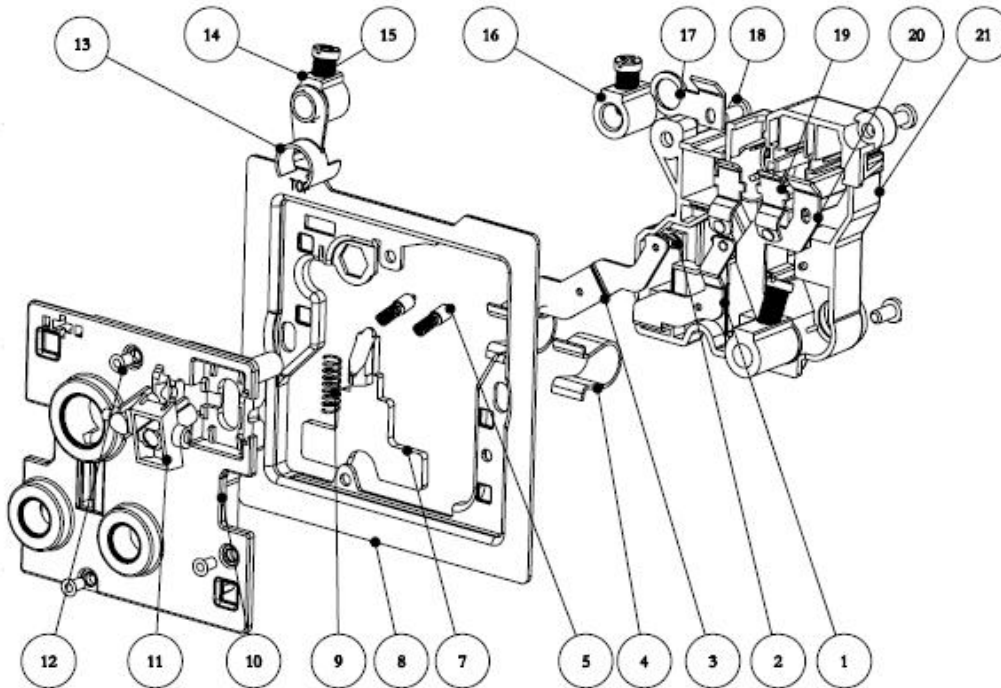
Asea Brown Boveri, S.A.
LPWA Wiring Accessories
NIESSEN Factory

Communication to the agents
involved in the life cycle

DOC 42-03-04

Revisión Nº 2
Enero 2013

1G double pole switched 15Amp



- 1 – Support contact
- 2 - Line contact
- 3 – Switch contact
- 4 – Contact for pin
- 5 – Python
- 7 – Shutter (blind)
- 8 – Metal grid
- 9 – Spring for shutter
- 10 – Cover
- 11 - Knob (Rocker)
- 12 – Rivets
- 13 – Earth contact
- 14 – Terminal
- 15 – Screw
- 16 – Line terminal
- 17 – Support contact
- 18 – Rivets
- 19 – Mobile contact
- 20 – Support contact
- 21 – Base

Brass
Brass
Brass
Brass
PA
PA
Iron
Steel
PC
PA
Brass
Brass
Brass
Iron
Brass
Brass
Brass
Brass
PA



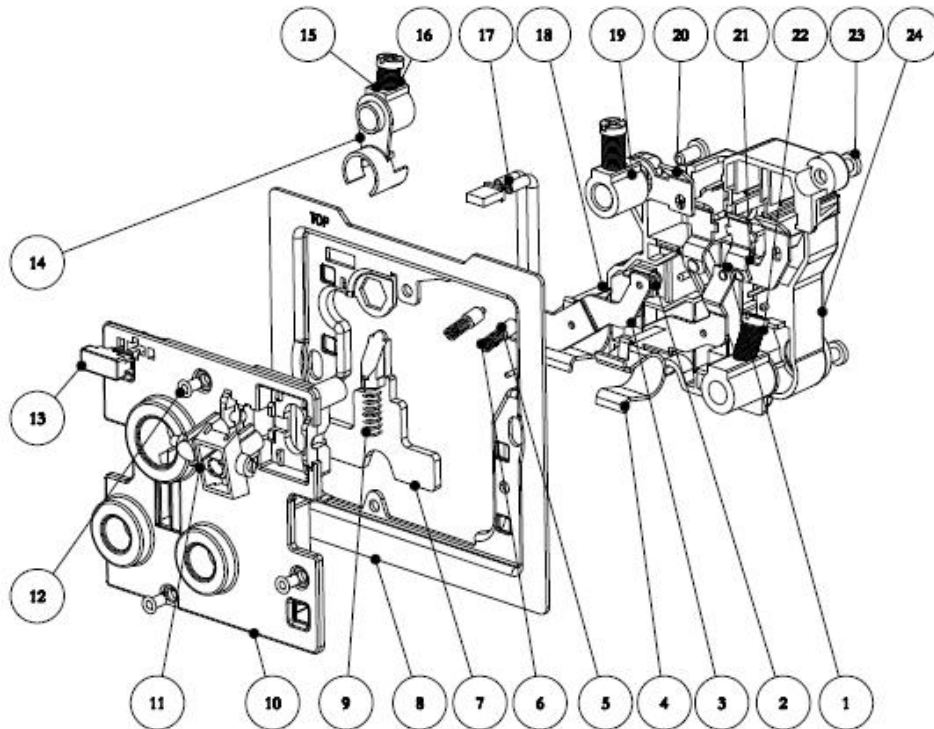
Asea Brown Boveri, S.A.
LPWA Wiring Accessories
NIESSEN Factory

Communication to the agents
involved in the life cycle

DOC 42-03-04

Revisión Nº 2
Enero 2013

1G double pole switched 15Amp with LED



It is the same that 1G double pole switched 15Amp, but with more components

4 – Spring for LED
13 – Display for LED
17 – LED

Steel
PC
PC and copper wire



Asea Brown Boveri, S.A.
LPWA Wiring Accessories
NIESSEN Factory

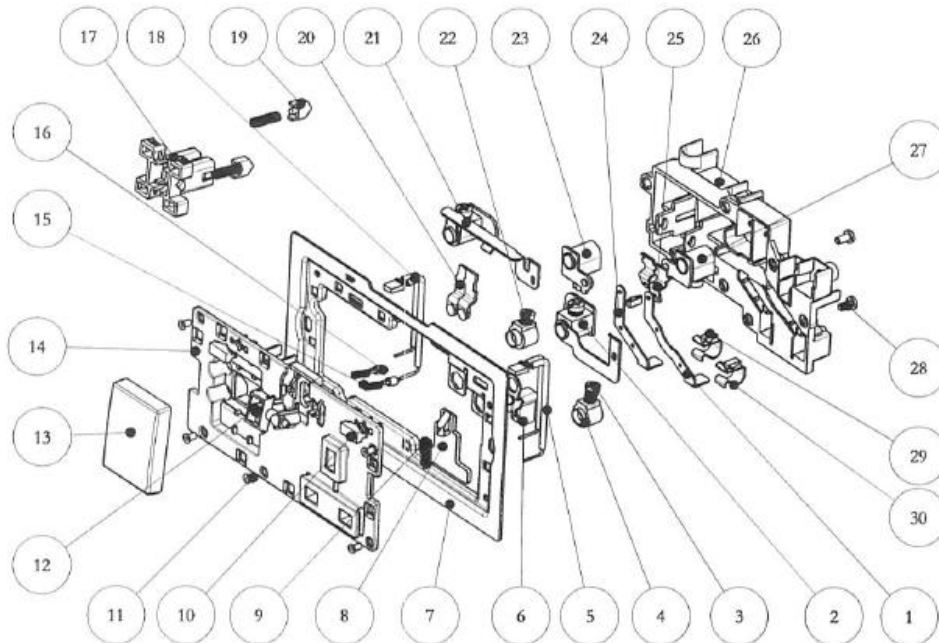
Communication to the agents
involved in the life cycle

DOC 42-03-04

Revisión Nº 2
Enero 2013

Various

Cooker control unit



- 1 – 24 – Socket Outlet switch contact
- 2 – Terminal
- 3 – 22 – Screw
- 4 – Terminal
- 5 – 18 - LEDs
- 6 - Earth contact
- 7 – Metal grid
- 8 – Shutter (Blind)
- 9 – spring for shutter
- 10 – display for LED
- 11 – 28 - Rivets
- 12 - Knob (Rocker)
- 13 – Rocker
- 14 – Cover
- 15 – Spring
- 16 – Python
- 17 - Knob (Rocker)
- 19 - Python
- 20 – 25 - Mobile contact
- 21 – Double support switch contact
- 22 – Screw
- 23 – Terminal and fixed contact
- 24 – Switched contact
- 26 - Base

Brass
Brass
Iron
Brass
PC and copper wire
Bass
Iron
PA
Steel
PC
Brass
PA
PC
PC
Steel
PA
PA
PA
Brass
Brass
Iron
Brass
Brass

PA



Asea Brown Boveri, S.A.
LPWA Wiring Accessories
NIESSEN Factory

Communication to the agents
involved in the life cycle

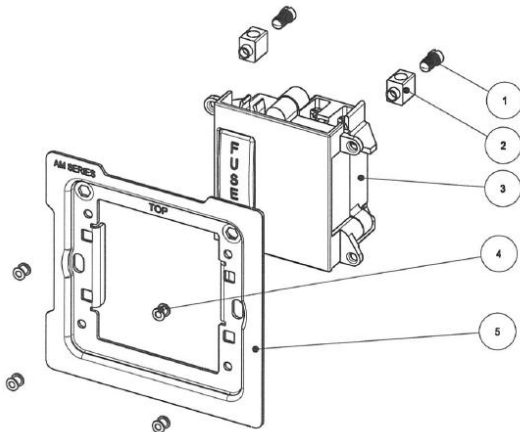
DOC 42-03-04

Revisión Nº 2
Enero 2013

27 – Terminal and support contact
29 – Spring for LED connection
30 – Contact for pin

Brass
Steel
Brass

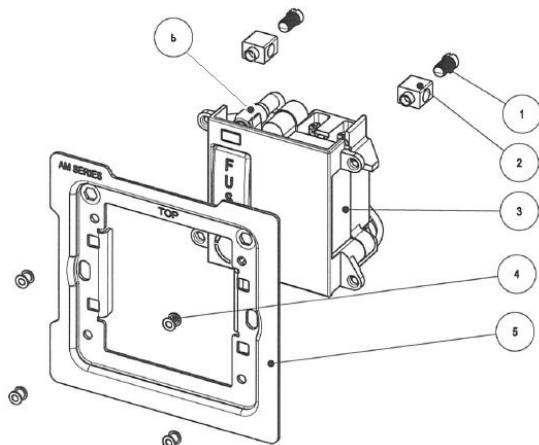
13Amp SPUR unswitched



1 – Screw
2 – Terminals
3 – Device
4 – Rivets
5 – Metal grid

Iron
Brass
PC + Brass
Brass
Iron

13Amp SPUR unswitched with LED



1 – Screw
2 – Terminals
3 – Device
4 – Rivets
5 – Metal grid
6 – LED

Iron
Brass
PC + Brass
Brass
Iron
PC + Copper wire



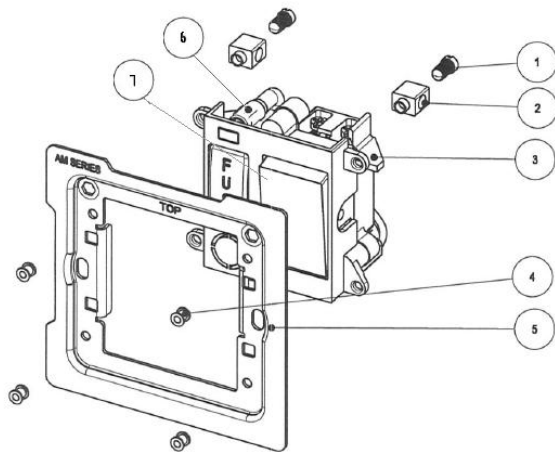
Asea Brown Boveri, S.A.
LPWA Wiring Accessories
NIESSEN Factory

Communication to the agents
involved in the life cycle

DOC 42-03-04

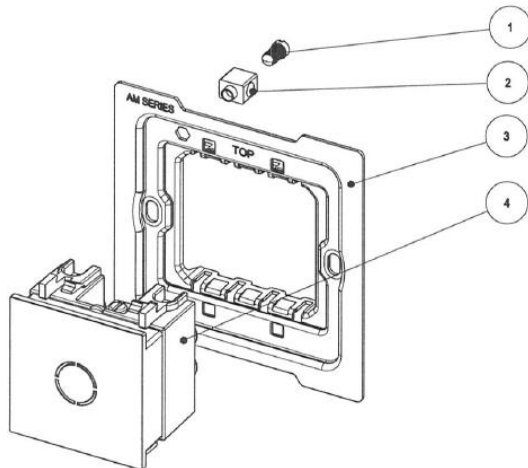
Revisión Nº 2
Enero 2013

13Amp SPUR switched with LED




It is the same that 13Amp SPUR unswitched with LED, but with more components
7 – Switch
PC + Brass + Iron

20 Amp Flex outlet

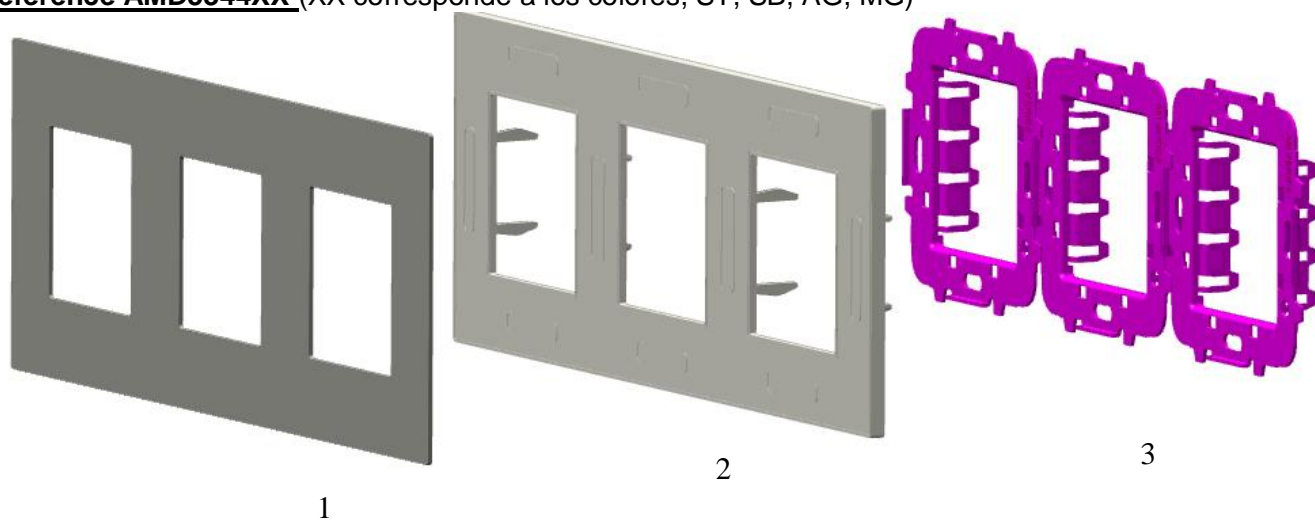


- 1 – Screw
- 2 – Terminal
- 3 – Metal grid
- 4 – Device

Iron
Brass
Iron
PC + Brass + Iron

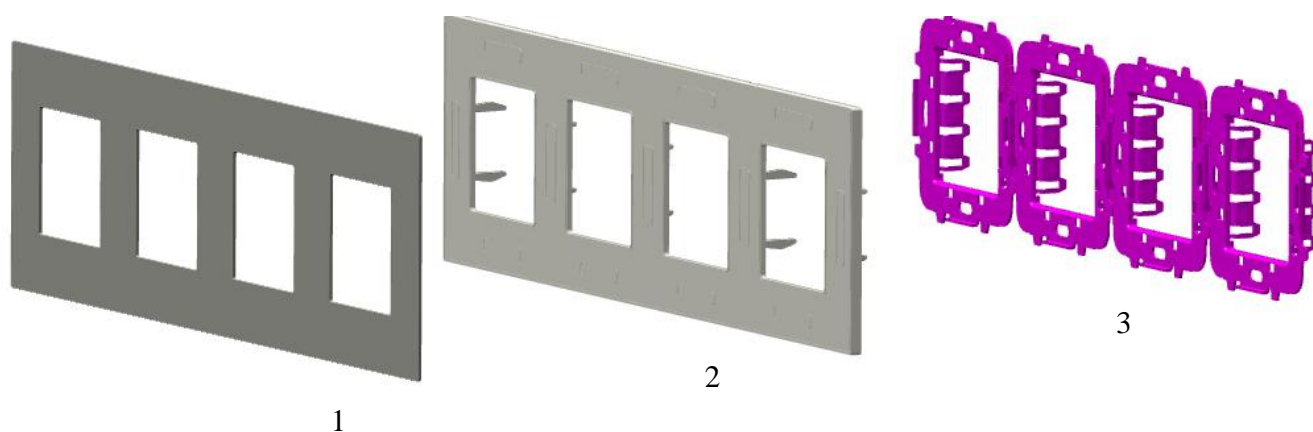
 Asea Brown Boveri, S.A. LPWA Wiring Accessories NIESSEN Factory	Communication to the agents involved in the life cycle	DOC 42-03-04 Revisión N° 2 Enero 2013
---	---	--

Reference AMD5344XX (XX corresponde a los colores, ST, SB, AG, MG)




- | | | |
|---|-------------------|-----------------|
| 1 | Frame 3 V | Stainless Steel |
| 2 | Frame support 3 V | PC |
| 3 | Metal grid 3 V | Iron |

Reference AMD5444XX (XX corresponde a los colores, ST, SB, AG, MG)



- | | | |
|---|-------------------|-----------------|
| 1 | Frame 4 V | Stainless Steel |
| 2 | Frame support 4 V | PC |
| 3 | Metal grid 4 V | Iron |

 Asea Brown Boveri, S.A. LPWA Wiring Accessories NIESSEN Factory	Communication to the agents involved in the life cycle	DOC 42-03-04 Revisión Nº 2 Enero 2013
---	---	--

Note: The presentation of these texts wrath according to the medium used (web, catalogs, instructions) so it does not always have this format.

Cecilia de Acha

Development Responsible

16/03/2016