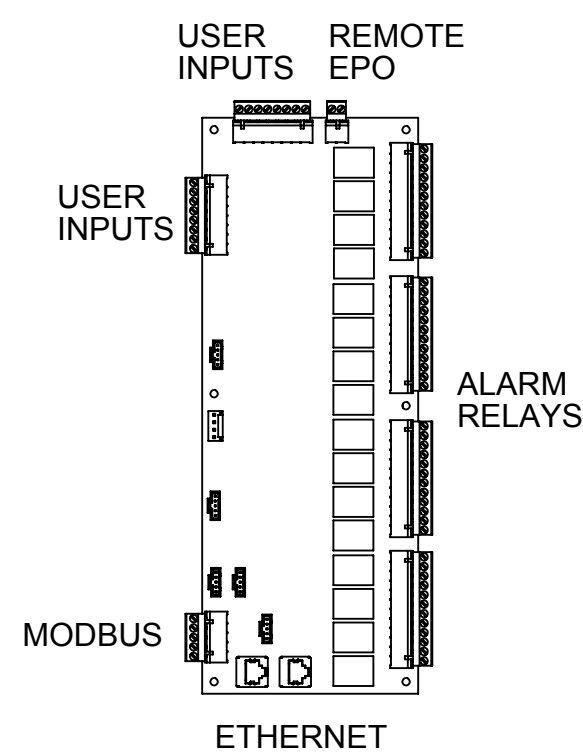
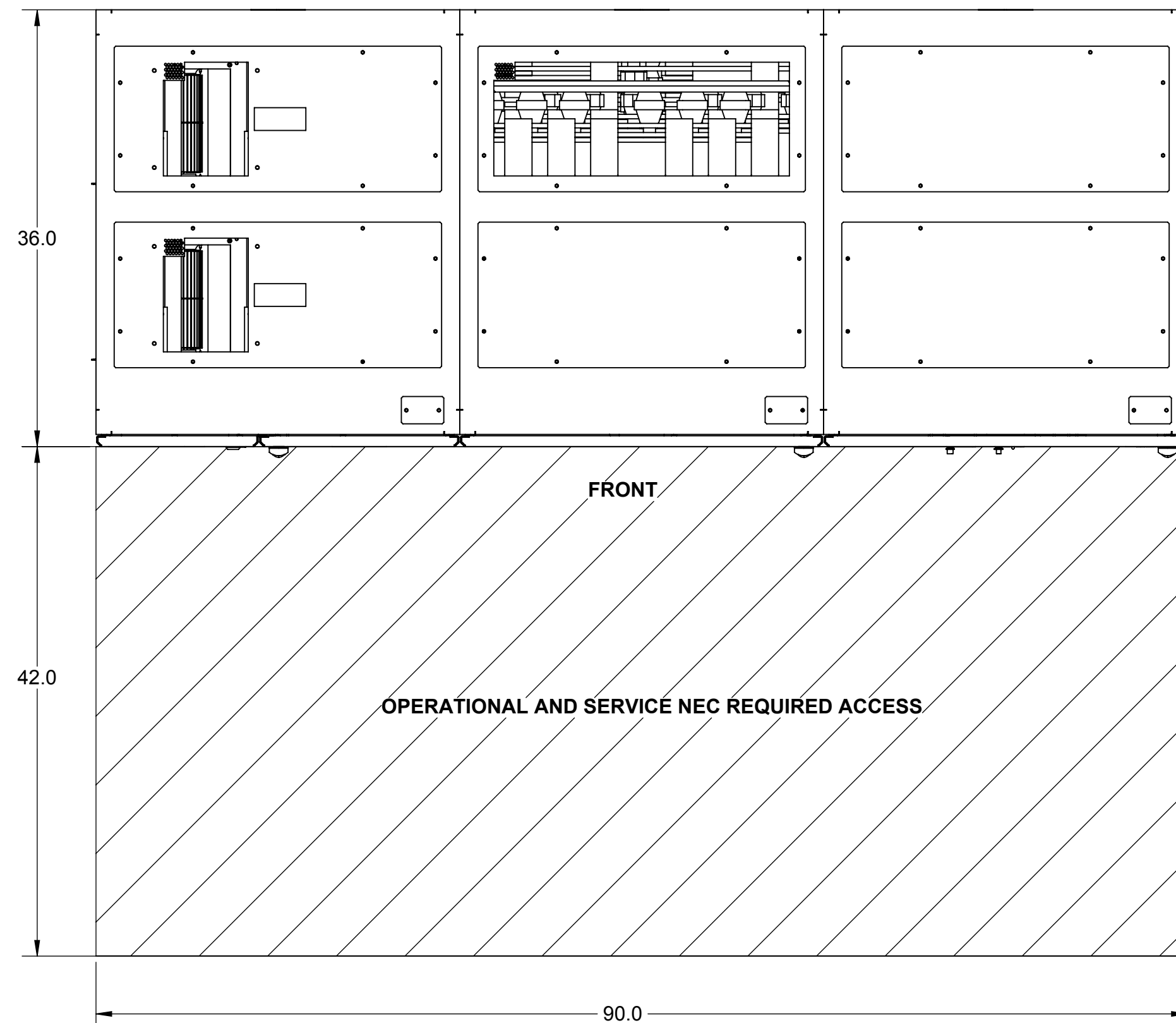
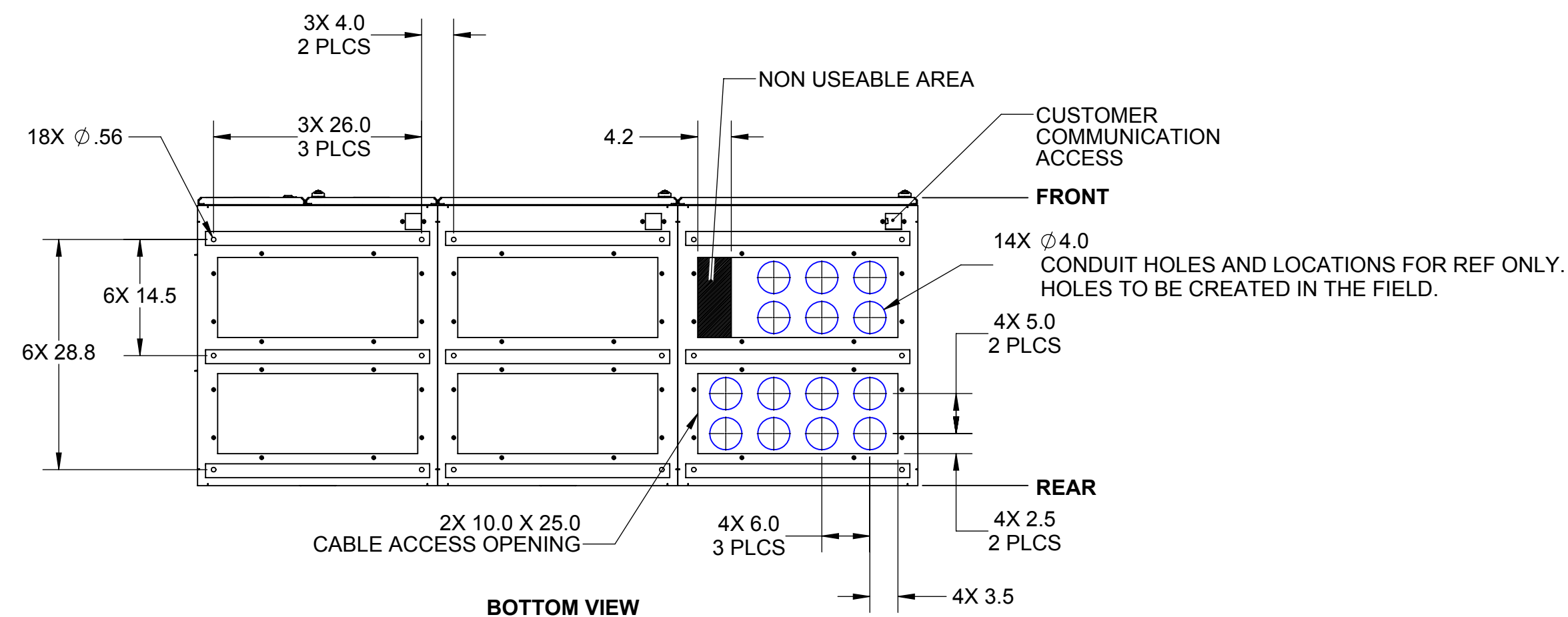
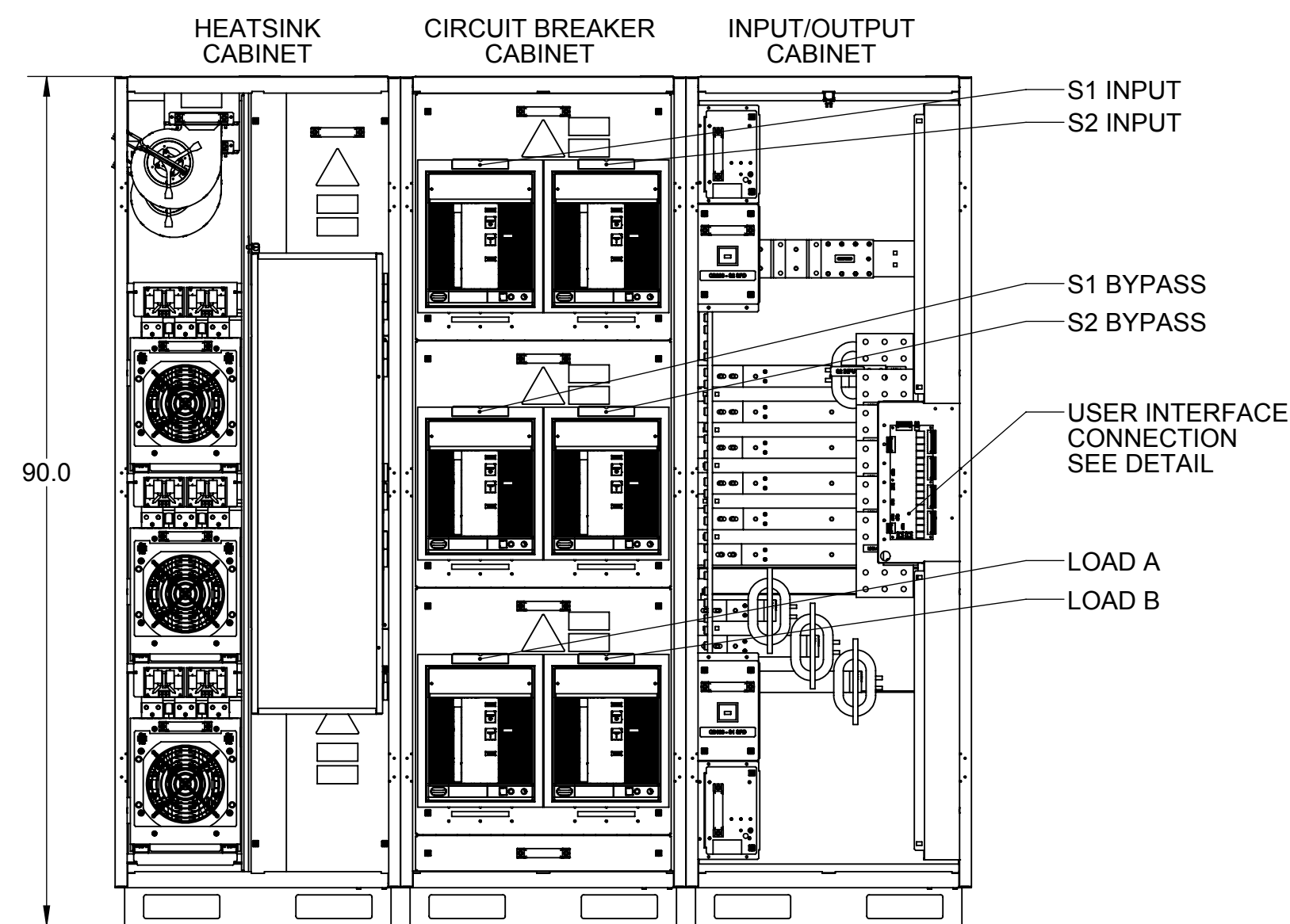
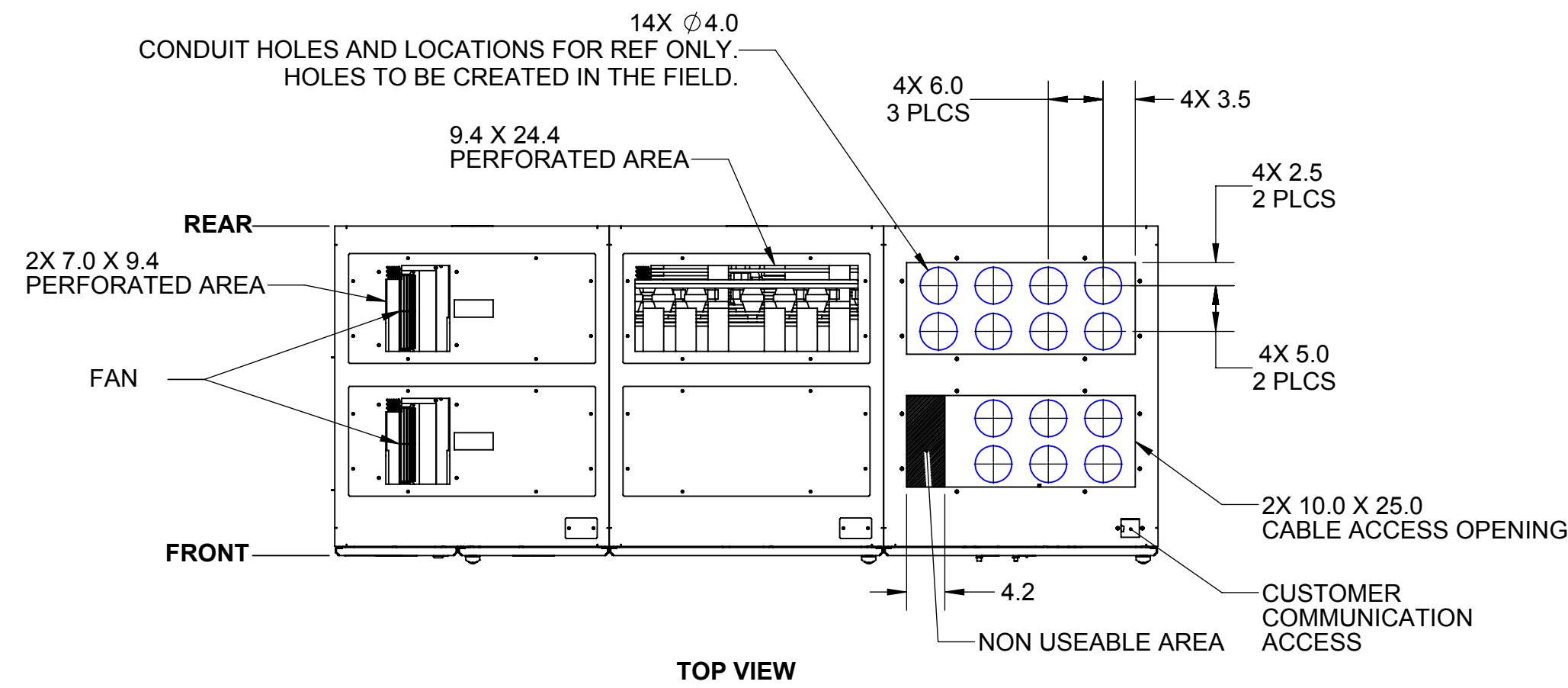


We reserve all rights in this document and in the information contained therein. Reproduction, use or disclosure to third parties without express authority is strictly forbidden. © Copyright 2014 ABB.



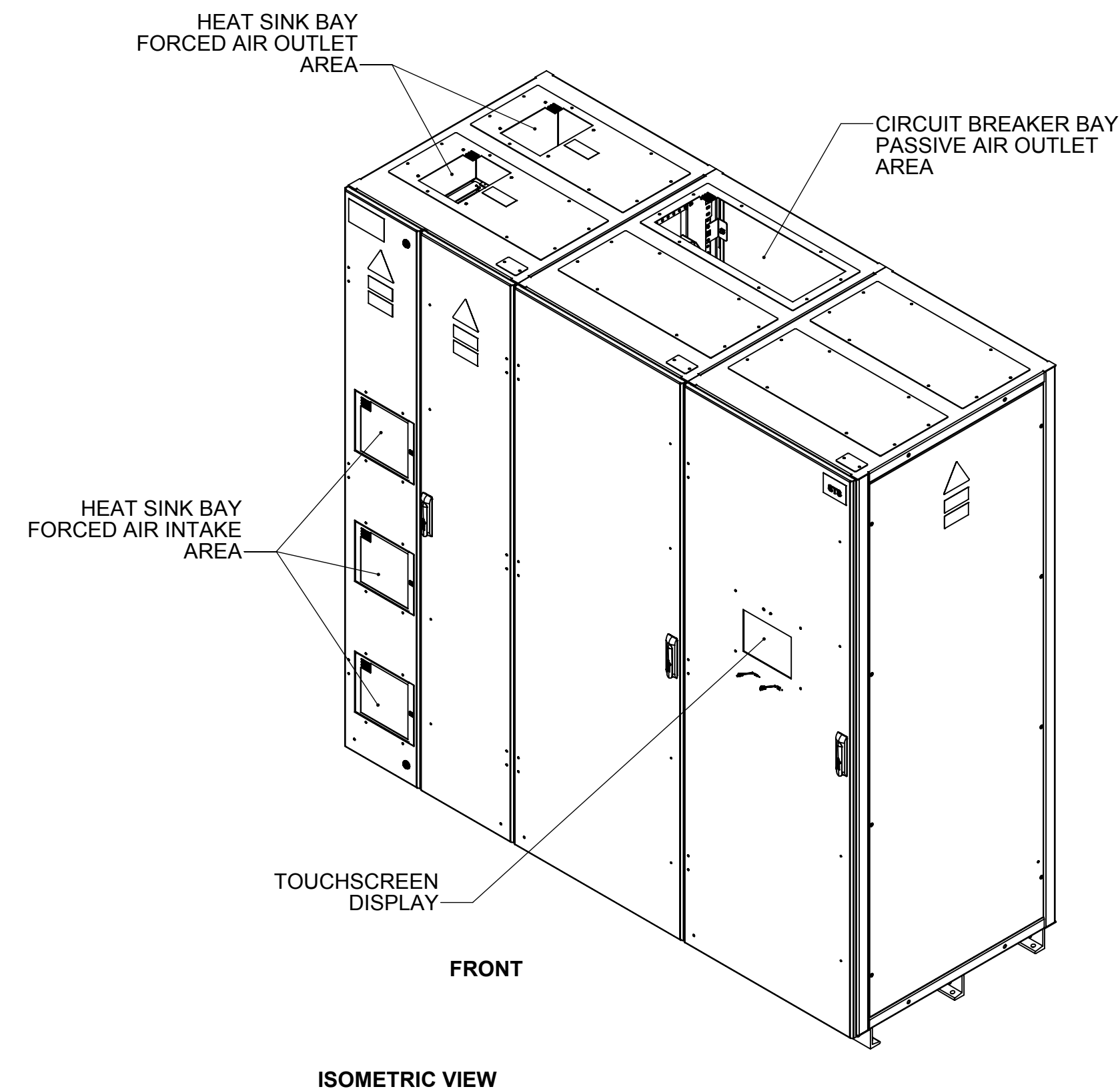
NOTES:

1. INSTALLATION SHALL COMPLY WITH ALL APPLICABLE NATIONAL, STATE, AND LOCAL CODES.
2. REFER TO PRODUCT DOCUMENTATION FOR ADDITIONAL DETAILS PRIOR TO SITE PREPARATION OR INSTALLATION.
3. OPERATING TEMPERATURE RANGE: 0° TO 40 °C.
4. SYSTEM COOLING REQUIREMENTS: FORCED AND EXHAUST AIR COOLED.
5. SYSTEM WEIGHT:

HEAT SINK BAY	1515 LBS (689 kg)
CIRCUIT BREAKER BAY	2360 LBS (1073 kg)
INPUT/OUTPUT BAY	915 LBS (416 kg)
TOTAL	4790 LBS (2177 kg)
6. OPERATIONAL ACCESS VIA FRONT DOORS. MAINTENANCE AND CONNECTION ACCESS VIA FRONT DOORS AND REMOVEABLE SIDE OR REAR PANELS (DEPENDING ON ACCESS - SEE NOTE 7).
7. RECOMMENDED MINIMUM CLEARANCES:

FRONT	= 42"
LEFT	= 42" OPTIONAL
RIGHT	= 42" OPTIONAL
TOP	= 60"
8. SYSTEM MUST HAVE ALL PANELS AND DOORS INSTALLED FOR PROPER OPERATION.
9. FINISH: FRAME AND OUTER PANELS, POWDER COAT INTERIOR, GALVANIZED ZINC ELECTROPLATE.
10. CABLE ENTRY:

TOP ENTRY - TOP EXIT	
BOTTOM ENTRY - BOTTOM EXIT	
TOP ENTRY - BOTTOM EXIT	
BOTTOM ENTRY - TOP EXIT	
11. BUSBAR TERMINALS FURNISHED WITH NEMA 2-HOLE LANDINGS. SEE SHEET 2 DETAILS A, B, AND C.
12. 1600A DESIGNED FOR CABLE SIZES UP TO 6X 750 MCM PER PHASE.



A01	--	PLH	UPDATING LABELS	4/25/2018
A00	--	PLH	INITIAL RELEASE	02/22/2018
Rev.	ECN#	Resp.	Description	Date

Revision Table			Units	Sheet Size
DWG: OUTLINE, 1600A SS4			Inch	D
Scale			1:16	
Item No.			Item Rev.	Date Drawn
94-9200-00000201			A01	02/22/2018
Document ID			Doc. Rev.	Page
94-9200-00000201			A01	1 / 2

Part must comply with company doc. 94-10-000001.  
Interpret drawing in accordance with ASME Y14.5-2009.

Tolerance

X.XX = None

X.XXX = ±.030

Prepared

PLH

Approved

PD

Division/Dept.

Power Protection

Document Kind

Outline

Reference

N/A

Document ID

94-9200-00000201

Item No.

94-9200-00000201

Document ID

94-9200-00000201

Item Rev.

A01

Date Drawn

02/22/2018

Doc. Rev.

A01

Page

1 / 2

Part must comply with company doc. 94-10-000001.  
Interpret drawing in accordance with ASME Y14.5-2009.

Tolerance

X.XX = None

X.XXX = ±.030

Prepared

PLH

Approved

PD

Division/Dept.

Power Protection

Document Kind

Outline

Reference

N/A

Document ID

94-9200-00000201

Item No.

94-9200-00000201

Document ID

94-9200-00000201

Item Rev.

A01

Date Drawn

02/22/2018

Doc. Rev.

A01

Page

1 / 2

Part must comply with company doc. 94-10-000001.  
Interpret drawing in accordance with ASME Y14.5-2009.

Tolerance

X.XX = None

X.XXX = ±.030

Prepared

PLH

Approved

PD

Division/Dept.

Power Protection

Document Kind

Outline

Reference

N/A

Document ID

94-9200-00000201

Item No.

94-9200-00000201

Document ID

94-9200-00000201

Item Rev.

A01

Date Drawn

02/22/2018

Doc. Rev.

A01

Page

1 / 2

We reserve all rights in this document and in the information contained therein. Reproduction, use or disclosure to third parties without express authority is strictly forbidden. © Copyright 2014 ABB.

