

BROCHURE

Premier Industrial, Commercial Essentials and Distribution Connectors

USA overview



Installation Products Division

- **Premier Industrial:**
Cable protection systems, Connectivity and grounding, Fastening
- **Commercial Essentials:**
Boxes and fittings, Metal framing
- **Distribution Connectors**

ABB Installation Products Division, formerly Thomas & Betts, has a long legacy of innovation and quality products. From connectors that support electrical wiring on Earth to cable ties that help put machines in space, we work every day to design and produce solutions for a safer, smarter and more reliable flow of electricity. Wherever electricity is used, our products connect and protect from source to socket.

Table of contents

006–007	Introduction
008–009	Premier: cable protection systems
010–011	Premier: connectivity and grounding
012	Premier: fastening
013	Commercial Essentials: metal framing
014–015	Commercial Essentials: boxes and fittings
015	Distribution Connectors

An empowering selection of ABB installation products



For safer and smarter continuous operations across a wide range of industries, commercial construction and power distribution applications. With a portfolio of more than 200,000 products marketed under more than thirty premium brands, ABB Installation Products solutions are found wherever electricity is used. To make it easier for you, we have highlighted our most popular and innovative products to help strengthen your business.



Premier Industrial

We provide industrial solutions to support safety and continuous operations in your plant.

Many contractors and manufacturers are time constrained and challenged to source all the necessary accessories to maintain devices and improve lifespan, performance and uptime. In the era of continuous operations, they need to include dependable solutions to address issues like liquid ingress, chemical resistance, temperature transitions, while incorporating SKU reduction, sustainability and industry specific requirements like hygienic designs, space savings or extreme temperatures.

ABB Installation Products is active in more than twenty industries, meeting the specific industry requirements and offering practical solutions based on long term experience. Our products solve a combination of customer needs and extend the lifespan of moving and static installations. The ABB Installation Products team works with customers to provide the necessary components and accessories that save time, simplify sourcing and help reduce downtime.



Commercial Essentials

ABB Installation Products is continuously working to support you at every stage of your project, with high quality electrical components that are innovative, safe and reliable.

From new installations to improvements, we deliver an extensive selection of products that provide flexibility and ease of installation.

Every commercial building has unique requirements. Our portfolio of boxes, fittings and metal framing provides industry leading products to meet your project needs. Innovative choices designed from the latest insights to meet the newest requirements. Our proven brands have been trusted for decades by electricians and meet today's rigorous codes and standards.

Whether residential, commercial, and industrial projects: we deliver solutions that provide safety and reliability in daily life.



ABB Installation Products Division (formerly Thomas & Betts), is the number one manufacturer of electrification products in North America with a 125-year history of providing innovation and customer-focused solutions for connecting and protecting electrical systems, as well as a unique differentiated medium voltage offering for utilities.



Distribution Connectors

Our products touch many industries to help ensure the power never stops.

New in this brochure are the Distribution Connectors, that provide our distributors and agents direct access to our Utility Product Group portfolio. We know power transmission continuity is a priority, and utilities across the country are concerned with running their operations efficiently, cost-effectively and safely. We offer you a full selection of established products to ensure local utilities are maintaining an effective and sustainable power source for their customers.

ABB's Utility Product Group focuses on providing products for Overhead and Underground applications. With brands like Homic® splices, taps and terminals and Blackburn® connectors and compression lugs you can update or repair existing electrical infrastructure with a wide array of solutions that increase power reliability and efficiency, without having to rebuild.

ABB is proud to manufacture and ship many of these products out of the USA.



Installation Products Division

Cable protection systems

ENHANCED FEATURES



A complete system solution of liquidtight conduit, fittings and accessories

- **Global certifications** including UL, CSA, IEC/EN, CE, RoHS
- **Wide range** of trade sizes from 3/8 to 6 inches
- **Highest quality** liquidtight fittings including steel, stainless steel, aluminum, nickel plated brass, non-metallic and high-temperature
- **Superior protection** from corrosion, oils, chemicals, solvents, wash-down, to UV and more tensile strength
- **Solutions** for general purpose, food & beverage and more



T&B Liquidtight Systems®

PREMIER INDUSTRIAL

ENHANCED FEATURES



Liquidtight conduit and fittings for light industrial and commercial applications

- **IP 65 resistant** to water, oil and mild acids
- **Steel, Zinc plated**, 3/8 to 4"
- **NPT Threads**, Insulated and non-insulated
- **UL Listed**, CSA certified, RoHS compliant
- For use with **Type CLGE Steel**, Zinc plated **LFMC**



Steel City®

ENHANCED FEATURES



Everything you need for high performance cable and cord fittings

- **A complete line** of reliable cord and cable fittings of steel, stainless steel, aluminum, nickel plated brass and nylon
- **Easy to install** while offering long life and high-performance in all applications
- Our **cord connector design** utilize liquidtight installations
- **Compact Ranger®** cord connectors provide twice the cable range with superior strain relief
- **Black Beauty®** connector with tool-free installation for high mechanical pullout performance



T&B® Fittings



The pioneer in metal-clad (MC) cable fittings

- **Faster installation** with the power-grip grounding ring. Exceeds pullout by more than double.
- **Low-profile gland** nut fits in tight spaces
- **Re-usable** with easy cable input
- **Durable and reusable** with funnel entry for easy cable insertion



Star Teck®



Industry standard pioneer for rigid fittings

- **Industry standard pioneer:** including Chase nipples and Erickson couplings
- **Feature rich** fittings focused on reduced labor, less inventory, longer life, and greater safety
- **Innovation** continues with BlueKote® conduit bodies
- **NEC, UL and CSA** Industry and Code compliance
- Providing **ease of installation** and lower installation costs



T&B Fittings

ENHANCED FEATURES



Rigid fittings for light industrial applications

- **Leading brand** in electrical construction since 1904
- Manufactured to **strict tolerances** for consistent performance
- **Set industry standards** for quality and innovation
- **Provide long-lasting service** in commercial, industrial and residential construction



Steel City

PREMIER INDUSTRIAL



The complete corrosion protection solution for rigid conduit systems

- **Industry-leading** thread protection by hotdipped galvanizing process, and UL® Listed type 4X PVC-coated conduit bodies
- **NEMA RN-1** full undisturbed zinc coating under the PVC coating
- **UL Listed** including UV resistance testing
- **Double-coat fittings** enhancing corrosion protection by applying coating before PVC coating
- **Local installation training** and certification



Ocal

ENHANCED FEATURES



A leader in flexible cable protection

- **Pioneer in the field** of cable protection
- **State-of-the-art** materials and technologies by intensive R&D
- **Over 6,500 high performance** products for outdoor & indoor, static & dynamic
- **Excellent service performance** including UL, CSA, IEC/EN, CE, RoHS
- **Customized** specific solutions and more



PMA

ENHANCED FEATURES

Installation Products Division

Connectivity and grounding



Compression solutions designed to meet the most stringent UL and IEC Class A testing requirements

- **Ensures a proper crimp** onto the conductor. Using a color coding system to match the right connector to the right tool and die
- **Stranded Wire Termination**
- **Verifiable** and Inspectable
- **Shure-Stake®** crimp mechanism tooling
- **UL / CSA & IEC (metric)**
- **Comprehensive tooling portfolio** includes the widest variety of mechanical, battery-powered and electrically powered hydraulic compression equipment

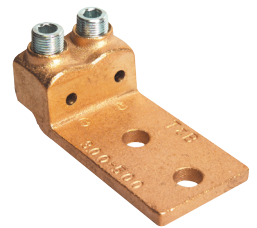


Color-Keyed®



Reliable, easy-to-install mechanical connectors UL listed and CSA certified

- **Complete line of copper and aluminum** mechanical connectors
- **Range-taking**, dual-rated aluminum ADR, ASL and ASR series connectors for termination and splicing
- **Range-taking copper L series and Locktite** series connectors for termination
- **Wide variety of split-bolt**, service post and two-bolt connectors for tapping

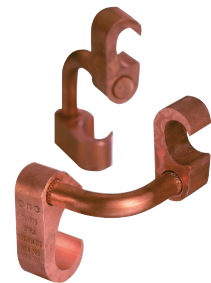


Blackburn®



Safe, code-compliant and reliable grounding solutions

- **A complete line of mechanical** and compression grounding connectors to meet any grounding requirements.
- **Features a broad range** of ground rod clamps, service post connectors, lay-in lug connectors and ground clamps
- **EZGround®** range-taking products reduce the number of connectors and dies needed for your installation
- **Many solutions are UL listed** for direct burial, long-term corrosion-resistant copper alloys



Blackburn®



Interconnection systems – Harsh environments

- **Maintenance-free** systems ranging from 20 to 400 amps
- **Full polarization** for exact voltage, frequency and phases, power supply ratings cannot mix
- **Quick installation** and wiring access



Russellstoll®



Insulated and non-insulated crimp terminals

- **Easy-entry** design
- **Brazed seam** barrel construction
- **Ergonomic** hand tool



Spec-Kon®



Heat shrink tubing protecting wires against moisture, corrosion and abrasion

- **Protection**, repair, identification colors, isolation
- **For heavy, medium and thin wall tubing**
- **Heat and radiation** protection by Polyolefin material
- **Options** with or without adhesion: by length or reel
- **Protecting end caps** against liquid and dirt



Shrink-Kon®



High-conductivity copper terminals with corrosion-resistant plating

- **Include** marked stud and wire sizes
- **Long chamfered barrel** to eliminate missed crimps
- **Deep internal** serration to produce a larger contact area
- **UL / imperial** portfolio

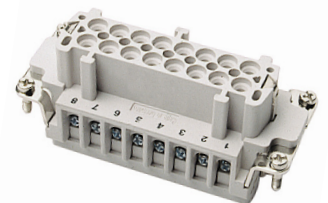


Sta-Kon®



Multi-pin connectors for power, connection and control

- **Best use of space** for multiple contacts in heavy-duty housings
- **Easy to assemble** with many different insert options
- **Best fit** for easy access in panels, machinery and enclosures
- **Sealed connector** with quick disconnect handles
- **Wide variety** of circuit possibilities from standard items
- **Solid or stranded wire** in fixed or portable use



Pos-E-Kon®

Installation Products Division

Fastening

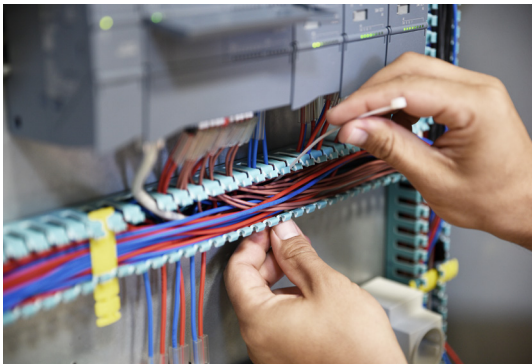


Fastening solutions for every application

- **Ty-Rap® high performance cable ties** – Automation and OEM applications, inside and outside
- **Ty-Rap® TyGenic™ antimicrobial detectable cable ties** – Food & beverage industry
- **Special material ties** – Chemical resistance, extreme high temperature, UV resistance and low smoke requirements
- **Stainless steel cable ties** – Extremely robust for harsh environments available in both coated and uncoated



Ty-Rap®



Fastening solutions for every application

- **General purpose ties** – Commercial value-priced ties in a wide range of sizes and styles
- **Easy to install** – Provides low insertion force for ease of installations
- **Catamount® Twist Tail®** – Cable ties that can be installed securely without tools



Catamount®



Flexibility in routing and concealing wiring in control panels

- **Fast and neat** internal wire bundling
- **Removes easily**, yet will not accidentally slip
- **Fast, dust-free operation** with bench-mount cutter
- **Widths from 0.75" to 6"** and depths from 1" to 5"



Ty-Duct®



Customized fastening in telecom and harsh outdoor environments

- **Select and customize** the strap length for any application
- **Total flexibility and no waste:** cut at the desired length
- **Easy to store:** reduced inventory
- **Safe and easy to install** with a guaranteed weatherable life
- **Corrosive and harsh environment protection**



Deltec®

Installation Products Division

Metal framing



Smart and easy strut solutions

- **Full line** of metal framing channel and accessories
- **Eliminates** field drilling and welding
- **Simplifies** field cutting and layout
- **Modular fittings** fasten to bolt side or slot side for versatile use
- **Galv-Krom finish** delivers high corrosion resistance, cleaner handling and storage flexibility
- **Goldgav finish** permits easier handling and storage flexibility due to higher corrosion resistance and cleaner finish



Kindorf®

ENHANCED FEATURES

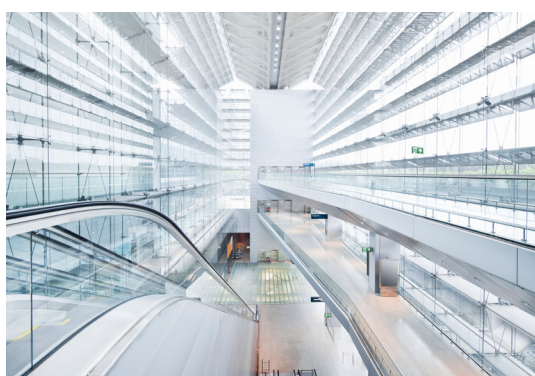


Complete metal framing solutions, offering protection in the harshest environments

- **Extensive range** of finishes, from GoldGalv and SilverGalv to hotdip and standard pre-galvanized
- **Clean finishes** deliver high corrosion resistance, easier handling and storage flexibility



Superstrut®



Smart and easy solutions for installing cable

- **Ladder tray** – Offers superior advantages over conduit and wiring systems
- **Protection** in corrosive and harsh environment with full-line of products
- **Easy and quick installation** – Extensive range of accessories
- **Easy to expand**, modify and update as needs evolve



T&B Cable Tray

COMMERCIAL ESSENTIALS

Installation Products Division

Boxes and fittings



Steel City® industry-leading boxes in commercial and industrial construction

- Full range of product offerings
- Recognized for innovative design and ability to meet the changing needs of contractors
- The highest quality standards



Steel City®



Steel City® commercial fittings deliver consistent performance in construction

- Manufactured for long-lasting service in commercial, industrial and residential applications
- One of the most complete offerings available
- Dependable pipe stop
- Heavy duty steel body/glands
- Designed with a thick electroplated zinc finish to resist corrosion



Steel City®



Durable boxes and fittings for demanding floor installations

- Durable solution for in-floor distribution of power and communications services, with options for any floor type
- Multi-service floor boxes accommodate power, data, voice and A/V devices in a single location for convenient access
- Durable solid brass and aluminum covers and poke through systems



Steel City®



The industry's preferred choice for outdoor boxes for more than fifty years

- Durable die-cast aluminum to withstand the harshest elements
- Single- and double-gang rectangular and round configurations
- Wide variety of hub sizes
- Ensure trouble-free installation and performance



redodot®

Installation Products Division

Boxes and fittings



The industry standard in non-metallic electrical boxes

- **Carlon® non-metallic** boxes feature PVC construction for greater performance, easier installation and lower installation cost
- **Designed and listed** for use with non-metallic sheathed cable
- **Safe and durable** – Won't corrode or conduct electricity
- **Fire Rated** with a minimum two-hour fire wall rating, UL listed



Carlon®



Light, flexible and strong non-metallic raceway systems, UL® Listed

- **Carlon® electrical non-metallic tubing (ENT)** for use in walls, floors and non-plenum ceilings, free of sharp edges for faster installation and lower installed costs
- **Plenum-Gard® raceway** is extremely durable. Resistant to abrasion and mechanical damage
- **Riser-Gard® raceway** also suitable in vertical runs, available with tape pre-installed Hal-Free
- **Won't rust** and non-conductive



Carlon®



Durable solution for demanding installations

- **Corrosion** resistant PVC junction boxes
- **Gasketed lids** attached using stainless steel screws
- **Available in lightweight NEMA Type 4/4X and 6P ratings**
- **Strong**, lightweight and easy to install
- **Non-metallic** Carlon® enclosures deter corrosion



Carlon®



PVC fittings and elbows designed for use above and below ground

- **1/4 to 1/5** the weight of metallic systems
- Can be installed in **less than half** the time
- **Don't conduct** electricity
- **No corrosion**, ready for outdoors



Carlon®

Distribution Connectors

Connectors and compression lugs



A complete line of splices, taps and terminals for overhead distribution

- A complete portfolio of splicing, tapping and termination solutions.
- Compression pin terminals
- Service wedges and neutral span clamps
- Aluminum and copper H-tap connectors
- Stirrup and parallel-groove connectors
- Insulation piercing connectors
- Service entrance connectors and splices
- Full- and semi-tension compression splices
- Automatic splices and dead-ends
- Hot-line clamps



Blackburn



ANSI C119.4 compliant compression lugs for utility applications

- General-purpose one-, two- and four-hole NEMA lugs enable aluminum and copper terminations
- Common die aluminum one-, two- and four-hole
- NEMA lugs help reduce die inventories
- Just one die installs the entire conductor range for meter pan and general applications
- Aluminum tin-plated meter socket lugs with star holes are dual-rated and corrosion-resistant
- Aluminum multi-range die-less lugs, slotted tang compression terminal lugs and corrosion-resistant bi-metallic lugs also available



HOMAC



World-class configurations for hand-hole and pedestal applications

- Reliable, time-saving solutions for underground distribution splicing, tapping and termination
- The innovative Homac Flood-Seal® connectors offer quick and easy installation of waterproof underground connections without time-consuming tape or heat-shrink insulation
- Multi-port connectors
- Splicing systems
- Street light connectors



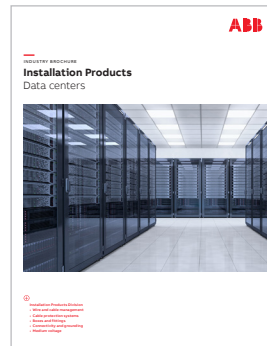
HOMAC

Installation Products for industries

- 01 Commercial and institutional buildings
- 02 Data centers
- 03 Food and beverage industry
- 04 Food and beverage industry - PESA
- 05 Utility industry
- 06 Power generation industry
- 07 Chemical industry
- 08 Oil and gas industry
- 09 Wind power industry
- 10 Renewable energy industry
- 11 Water and wastewater treatment industry
- 12 Single and multi-family housing industry
- 13 Rail industry
- 14 Civil infrastructure industry
- 15 Metals and mining industry



01



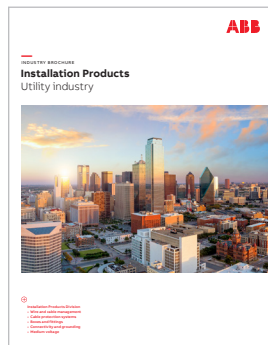
02



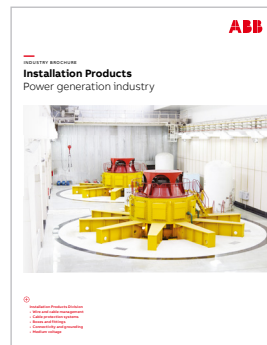
03



04



05



06



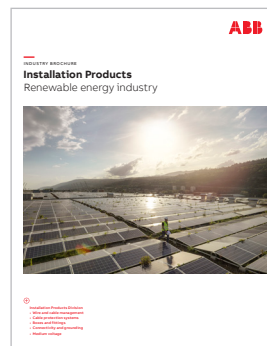
07



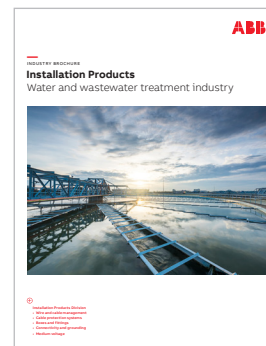
08



09



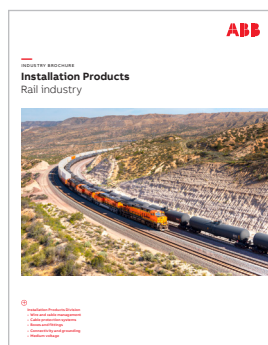
10



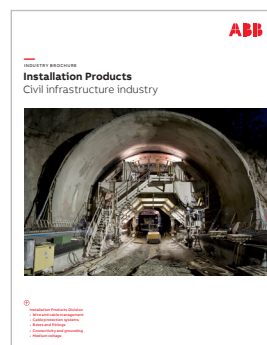
11



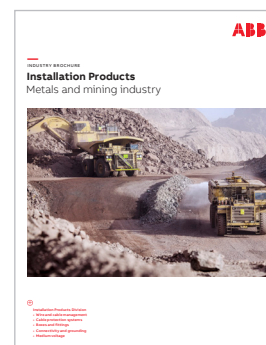
12



13



14



15



—
US

ABB Installation Products Inc.
Electrification Business
860 Ridge Lake Blvd.
Memphis, TN 38120
+1 901-252-5000

electrification.us.abb.com
tnb.abb.com