

# What to do in an emergency

| Fire               |  |   |
|--------------------|--|---|
| Alarm              |  | Remain calm.<br>Alert the fire department, dial 666 or ext. (0) 118 or use an alarm actuator.   |
| Rescue and warn    |  | Provide assistance.<br>Warn people exposed to danger.<br>Rescue disabled or injured people.   |
| Extinguish fire    |  | Use a fire extinguisher / fire hose for fire-fighting.<br>Do not put yourself in danger!  |
| Close              |  | Close windows and doors when leaving the building (to prevent the spread of fire and smoke).  |
| Attention          |  | Never use elevators (lifts).  |
| Evacuation         |  |   |
| Listen and comply  |  | Follow the instructions given by the emergency organization and written on the leaflets.<br>If you hear the alarm horns: Leave the building immediately.  |
| Leave the building |  | Leave the building calmly and quickly.<br>Use the nearest exit.<br>Never use elevators (lifts).   |
| Help               |  | Assist handicapped and injured people.<br>Do not put yourself in danger!  |
| Assembly           |  | Go immediately to the assembly area.<br>Do not leave the assembly area unless instructed to.  |
| Attention          |  | At no time should you return to the danger area.  |
| First Aid          |  |   |
| Principle          |  | Stop (review the situation).<br>Think (recognize follow-on hazards).<br>Act (protect yourself, secure the place of accident).   |
| Rescue             |  | Do not put yourself in danger!<br>Rescue injured people from hazard zone.<br>Before alarming: check consciousness.  |
| Alarm              |  | <div> <div> Paramedics<br/>Ambulance external </div> <div> 444<br/>(0) 144 </div> </div> <div> Who is calling?<br/>What has happened?<br/>Where did it happen?<br/>When did it happen?<br/>What kind of help? </div> <div> Name &amp; phone.<br/>Kind of incident.<br/>Place, building.<br/>Time.<br/>Rescue, Ambulance etc. </div> |
| Assist             |  | Do perform first aid<br>Care for the injured people until Paramedics arrives (first aid).<br>Familiarize, help & support rescue party.  |
| Pacemaker          |  | To whoever use a cardiac pacemaker, magnetic interferences may harm regular functions and even destroy there vital devices!   |

# Contact

**ABB Switzerland Ltd.**  
Via Luserte Sud 9  
CH-6572 Quartino  
  
**[www.abb.com/ups](http://www.abb.com/ups)**

# In case of emergency



# SAFETY GUIDE FOR VISITORS

# Welcome to ABB Quartino


Welcome to our ABB facility; we hope that your visit will be a pleasant and safe one. For safety and security reasons there are a few rules that you should follow during your stay.

We kindly ask you to carefully read this leaflet. If you have any questions, please ask your host or the reception staff.



## Your safety and security is our concern

### Visitor information

- On your arrival, you will receive a visitor's badge.  
Always wear it and make sure it is visible. When leaving ABB, please return your visitor's badge.
- Adhere to the instructions of your guide during your visit.
- Pay attention to your safety and the safety of those near to you.
-  Guests who have pacemakers, must inform the ABB reference hosting person, as electromagnetic fields interfere with their correct functioning.

### Safety instructions

- Access to production and testing areas is permitted only if accompanied by an ABB employee.
- Keep away from opened UPS systems.
- Use the appropriate personal protective equipment (PPE).
- Do not stray from the security path indicated on the factory floor.
- Pay attention to forklifts and trolleys.
- Take heed of the safety signs.
- Do not touch any product in the factory.

### You need authorisation in order to:

- Use ABB's equipment;
- Perform welding or cutting tasks;
- Perform any work-related tasks in the production departments;
- Remove or assemble piers or electric lines;
- Use the appropriate personal protective equipment (PPE) which has been placed at your disposal by ABB.

### Smokers

Smoking is restricted to the outdoor area at the back of the building as indicated on the map.

### Environment

Inside the work site, it is not allowed to:

- Use or displace any of the fire extinguishers without first obtaining authorization, unless there is a good reason to do so;
- Dump environmental pollutants in the sewer pipes;
- Use dangerous substances unless they are handled in containers meant to prevent any possible incidental release.

### In case of an emergency

#### Fire

- Immediately leave the building and go to the meeting point.
- Inform the internal emergency response personnel: 666
- If necessary, call the fire brigade: 118

#### First aid

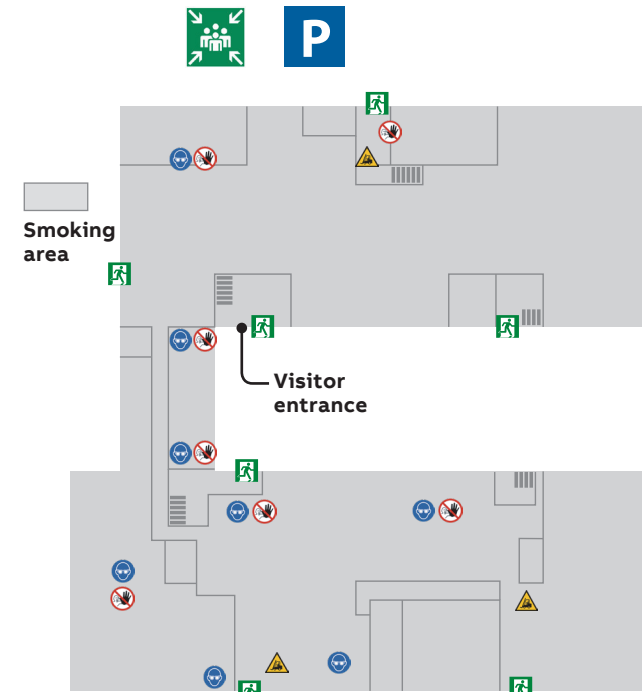
- Eliminate dangers.
- Inform the internal emergency response personnel: 444
- If necessary, call the ambulance service: 144
- Supervise the victim.
- Wait for help.

### Evacuation

Leave the building and go to the meeting point.

Thank you for your compliance to the rules and understanding!

## Location overview



Assembly point



Emergency exit



Use of PPE required



Attention to forklifts



Restricted entrance



Warning to people who have pacemakers