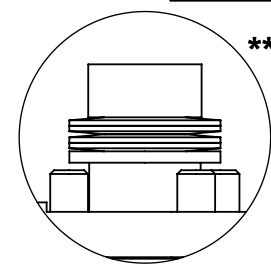
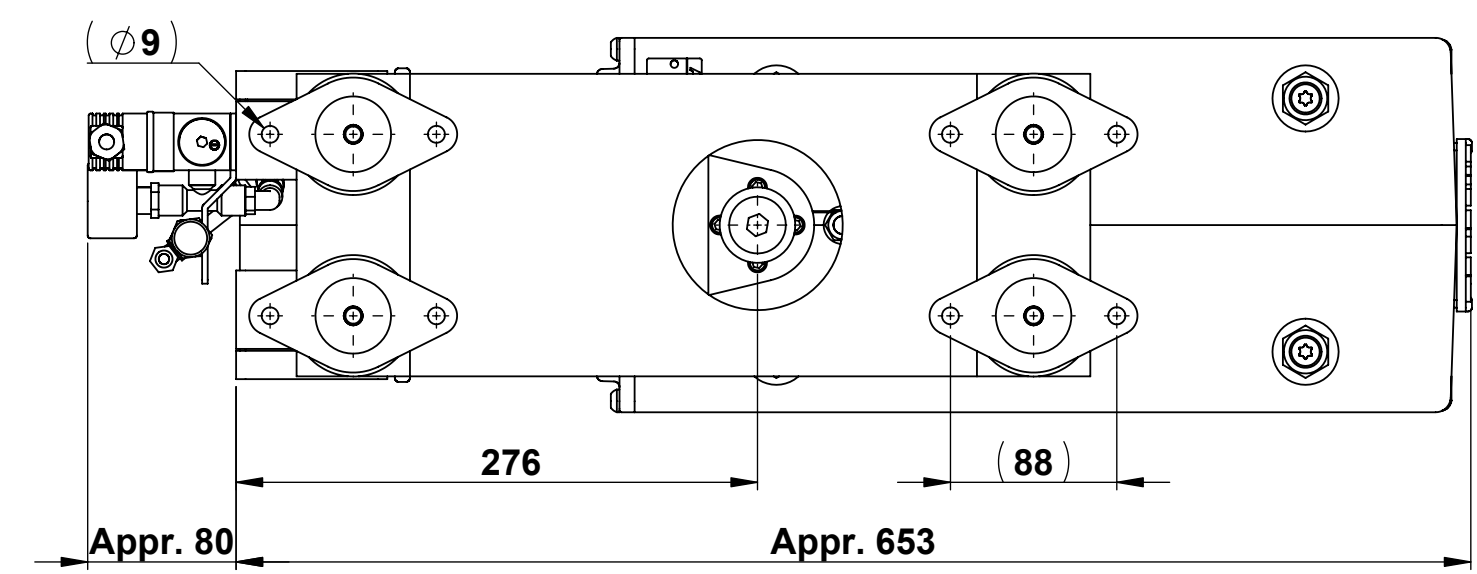


We reserve all rights in this document and in the information contained therein. Reproduction, use or disclosure to third parties without express authority is strictly forbidden.
© ABB AB

A

B

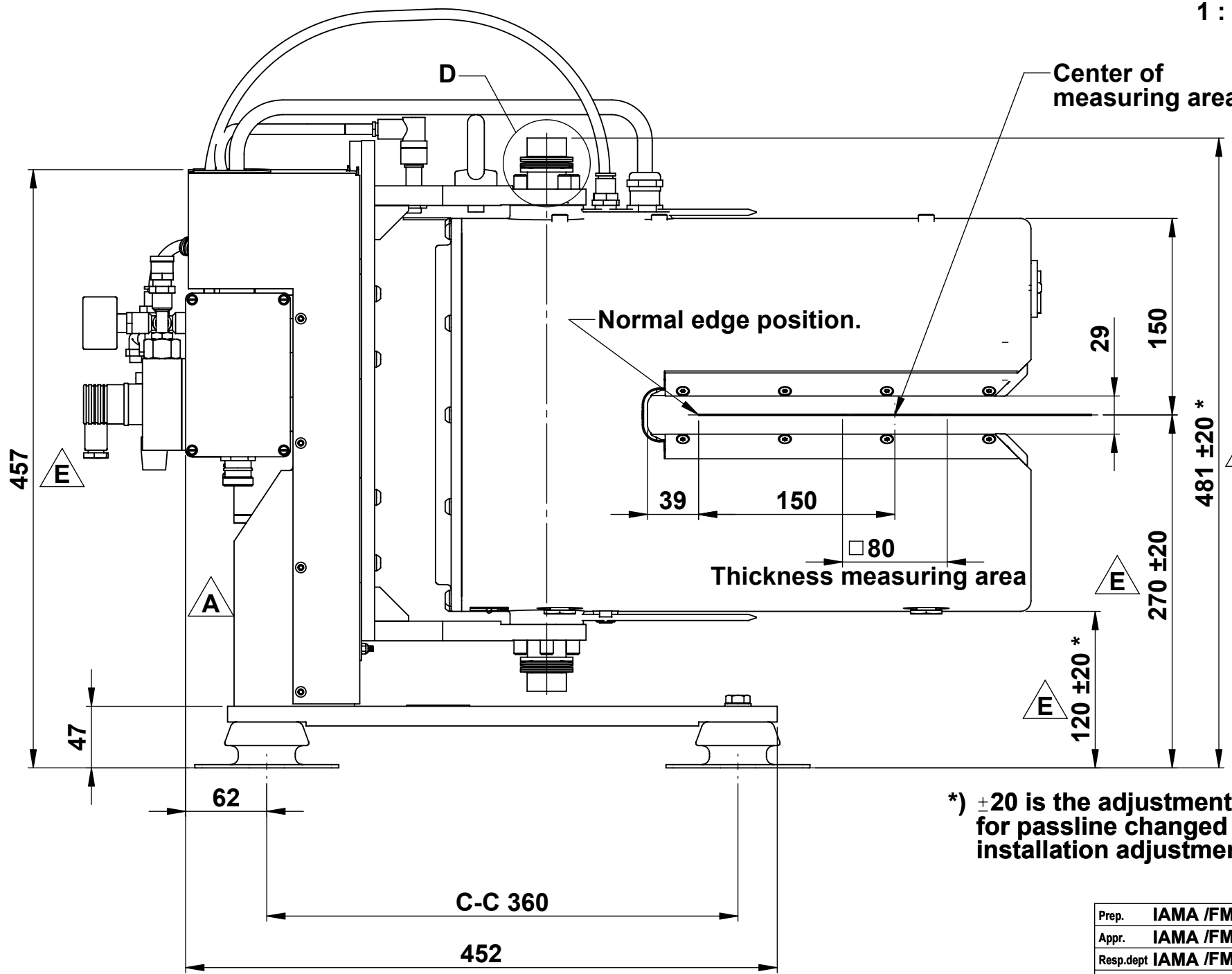
C



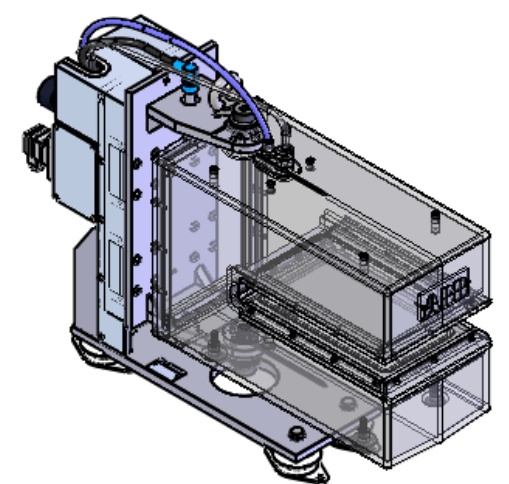
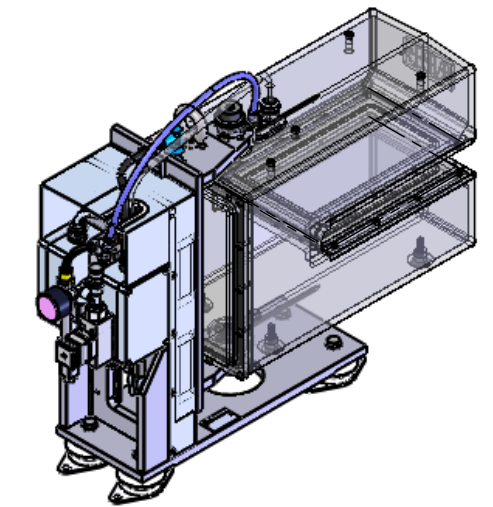
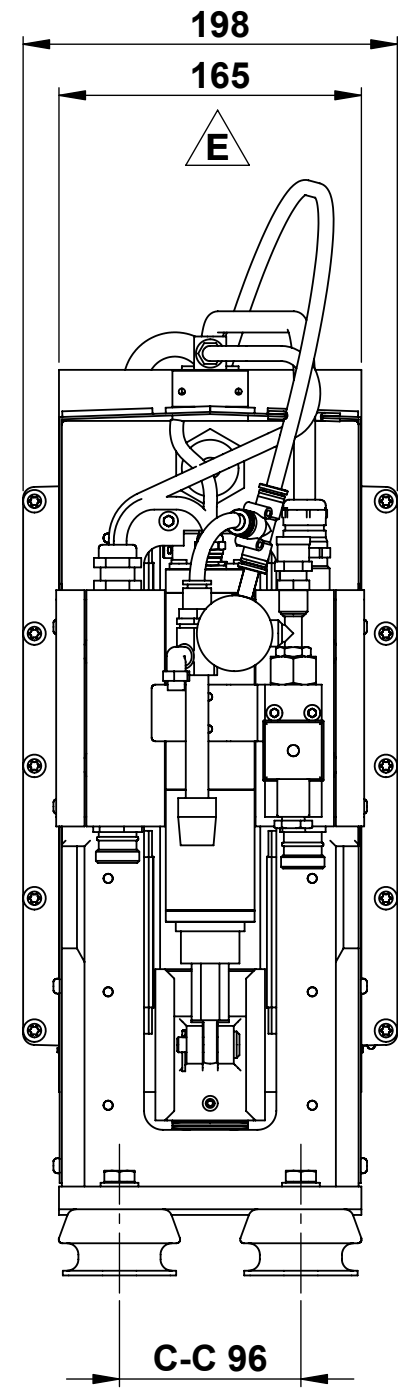
D
1 : 2

REV	DESCRIPTION	DATE	DEPT./INIT.
-	New document	2009-02-04	PA/FM/GD/RJ
A	62 added; View A adjusted	2009-03-18	PA/FM/GD/RJ
B	Removed Allowed edge pos.; Appr 80 was 75; holder width 165 was 160; Add info about screw, more info about adjustment range.	2011-01-26	PAFM/FMGD/MK
C	270 was 269	2011-05-04	PAFM/FMGD/RJ
D	Redrawn in solidworks	2020-02-20	IAMA/FMSE/CB
E	Dimension 457 was 460, 120 was 123, 270 was 273, 481 was 485, 165 was 160.	2020-06-11	IAMA/FMGF/DA

****)** Tighten screw until it comes to a mechanical stop.



***)** ±20 is the adjustment range for passline changed and/or installation adjustments.



Weight:
Gauge appr. 50 kg
Holder appr. 30 kg

Prohibited substances set out in the current document
"ABB List of Prohibited and Restricted substances" shall not be used.
Restricted substances in concentrations above the accepted levels must be declared.

Prep.	IAMA /FMGF	David Andersson	2020-09-15	CAD outline drawing			Cont.sh./ No of sh.
Appr.	IAMA /FMGF	Håkan F Wintzell	2020-10-14	PMGG123-S in Hold. PMGM121E PMGG123-S i Hållare PMGM121E			1
Resp.dept	IAMA /FMSE			Document number	Lang.	Rev.	Sheet
				3BSE053002D0064	sv	E	1
ABB AB							

Product family : 661650 Tjockleksmätare
Product type designation : PMGG123-S
Product information :

Project or order number :
Customer reference :
Modify date : 2020-08-26 15:51:58

Document status: **Approved**