

A

B

C

D

E

F

A

B

C

D

E

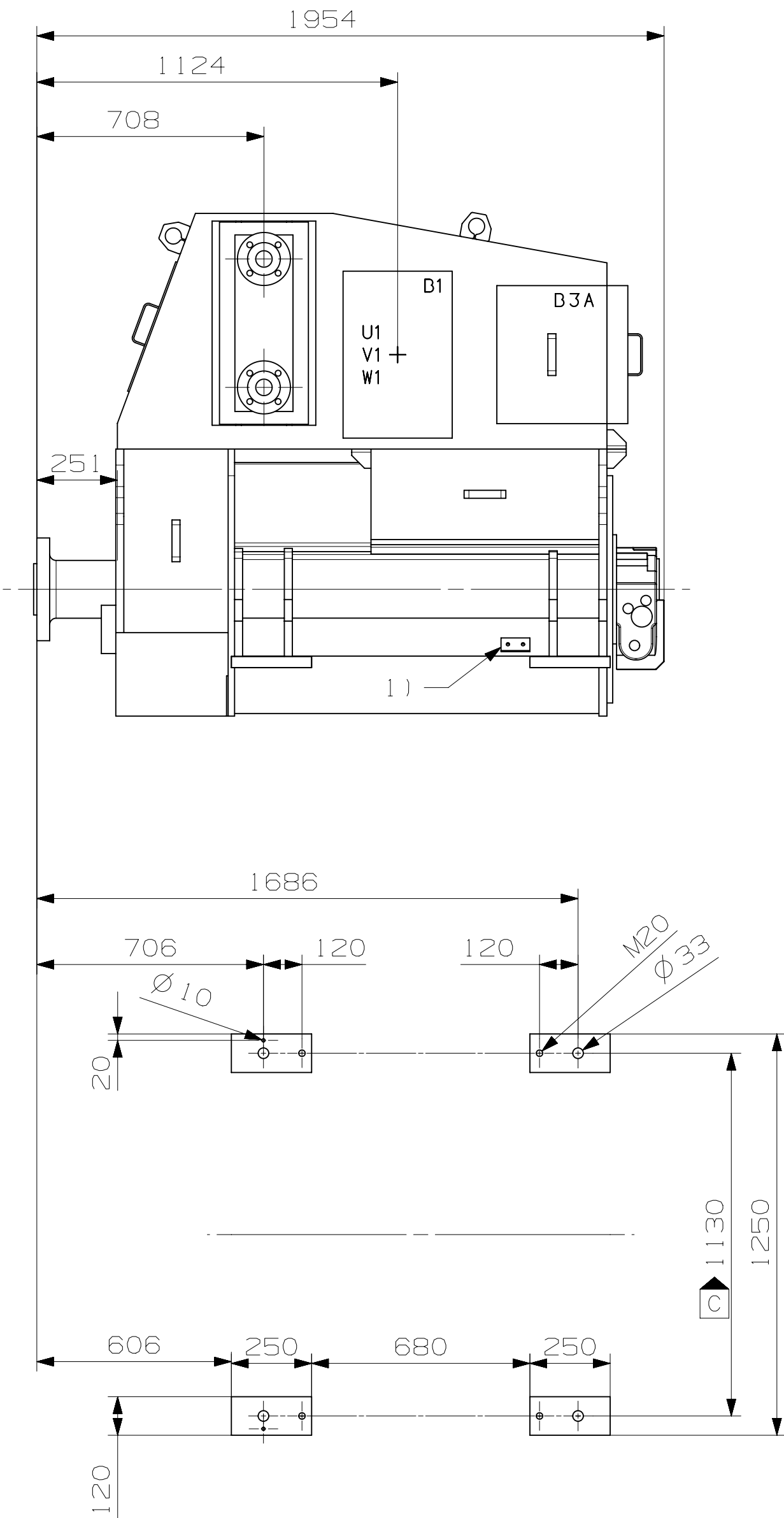
F

We reserve all rights in this document and in the information contained therein. Reproduction, use or disclosure for any purpose without express written permission of ABB is prohibited. In case of interpretation disputes the English text applies.

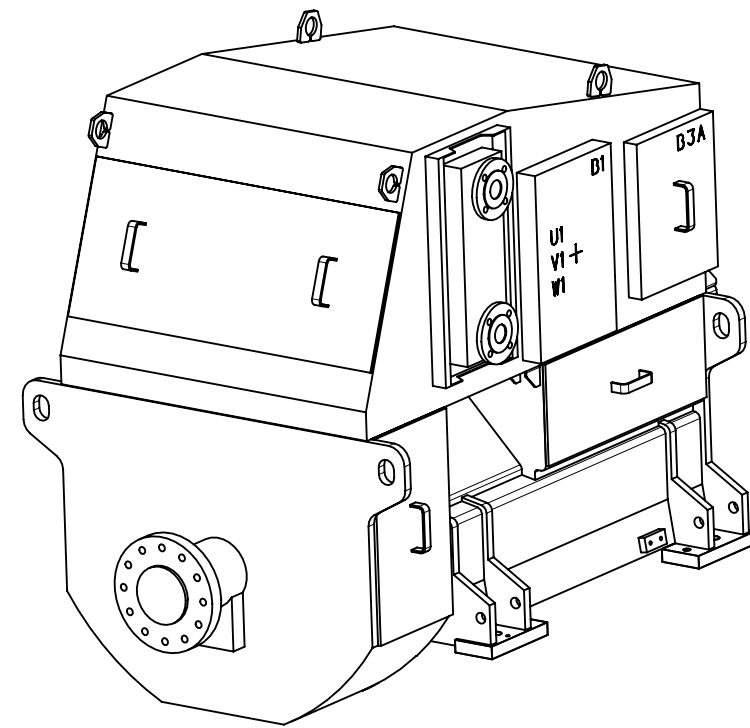
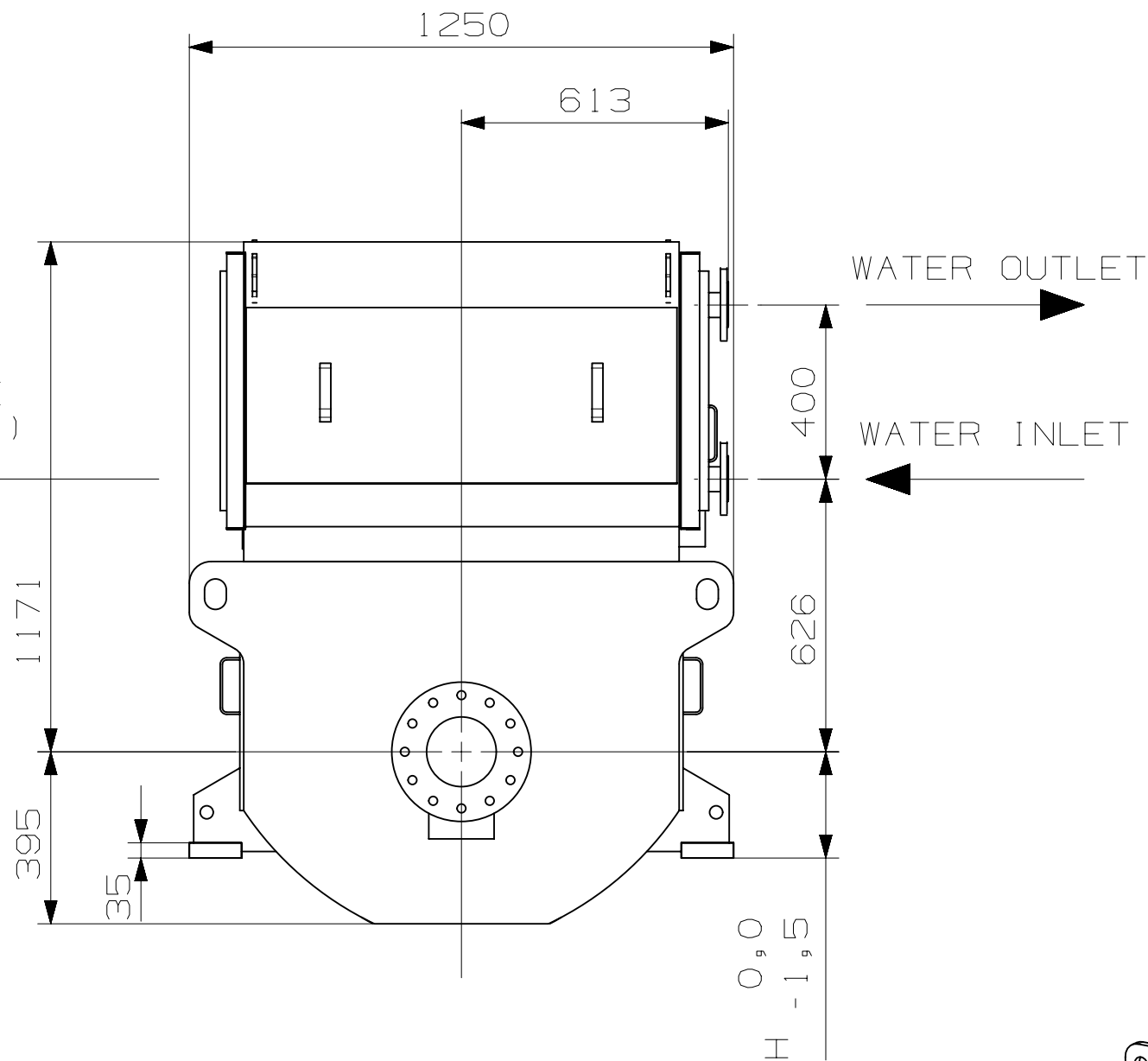
Unless otherwise stated:  
General tolerances for welded constructions: EN ISO 9900-BE  
General tolerances for cast parts: EN ISO 13053  
Stamped steel parts: DIN 6930-m Thermal cut ISO 9013-442.

Unless otherwise stated:  
Symbols for roughness according to ISO 1302.  
General tolerances for machining: ISO 2768-mK.

ABB20FI



MAIN CABLE  
OUTLET (B1)



B1 MAIN TERMINALS  
B3A TERMINALS FOR ACCESSORIES  
WATER FLANGES: DN50 DIN2633 PN16  
1) EARTHING POINTS ON BOTH SIDES

C	1130 WAS 1140	2016-07-28	CNSAHUS	CNTUTU	CNTUTU
Rev	Revision text	Date	Created	Reviewed	Approved

Created	finili	Machine type	PIF MODEL AMG_0400_M_UT_	Scale	1:10
Reviewed	Rikonen, Heikki	Responsible department	□□□	Language	EN
Approved	Kamppuri, Janne	Based on		Size	A3
Distribution	Functional code AH	Work number	Weight 0	Type designation	AMG 0400M... UT_
Document id	3AFP5806996	Revision	C	Sheet	1/1



Motors and Generators

NX