

# The new insight into your system

CP600 control panels with pre-engineered drives faceplate



# CP600 control panel with drives faceplate

Increase your efficiency by monitoring, controlling and diagnosing up to eight drives with one HMI from outside your enclosure



Easy to use plug and play solution



Usable without engineering effort



Customizable standard faceplates



Preconfigured user management



Connect up to 8 ACSx80 drives to one CP600 without project customization



## ACS380-D1

Remote  ACS380 25.0 HzMotor Frequency  
Hz **25.00**Motor Current  
A **0.01**Motor Torque  
% **31.6**Speed  
Reference  
(Hz)**25.0**

Reset

**STOP****START**

## IO Status

DI 1 LevelSw1

DI 2 LevelSw2

DI 3 FlowSw1

DI 4 FlowSw2

STO Safe Torque Off

AI 1 Temp01 0.31 V

AI 2 FlowRate1 0.66 mA

AO 1 Current 10.01 mA

DIO 1 WarningLED

DIO 2 EnableExt

RO 1 FaultLED

ACS380\_D01



ACS580\_D02



ACS880\_D11

ACS880\_D12



ACS380\_D05



ACS880\_D21

ACS880\_D22



ACS580\_D08

Advance

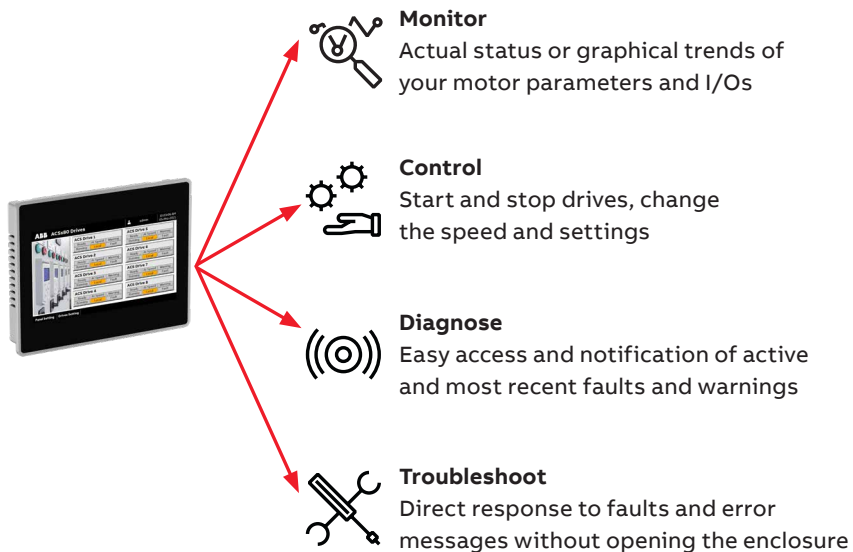
Trend

Alarms

Alarms **5**

# CP600 drives faceplate – the insight into your system

The drives faceplate adds a new dimension to the operator interface to expand what can be done



# CP600 control panels and PB610 Panel Builder 600

Your interface to the application



**Scalable** HMI platform consisting of 3 ranges:  
CP600-eCo, CP600 and CP600-Pro

**Efficient** widget-based user interface design  
with Panel Builder 600

**Various** application options through a wide  
range of supported fieldbuses

**Harmonized** with AC500 PLCs and  
ABB Ability™ Automation Builder

**More information?**

Visit <https://new.abb.com/plc/control-panels>



---

**ABB Automation Products GmbH**

Eppelheimer Straße 82

D-69123 Heidelberg / Germany

Tel.: +49 62 21 701 1444

Fax: +49 62 21 701 1382

**[www.abb.com/plc](http://www.abb.com/plc)**

**Additional information**

We reserve the right to make technical changes or modify the contents of this document without prior notice. ABB does not accept any responsibility whatsoever for potential errors or possible lack of information in this document.

We reserve all rights in this document and in the subject matter and illustrations contained therein. Any reproduction, disclosure to third parties or utilization of its contents – in whole or in parts – is forbidden without prior written consent of ABB.