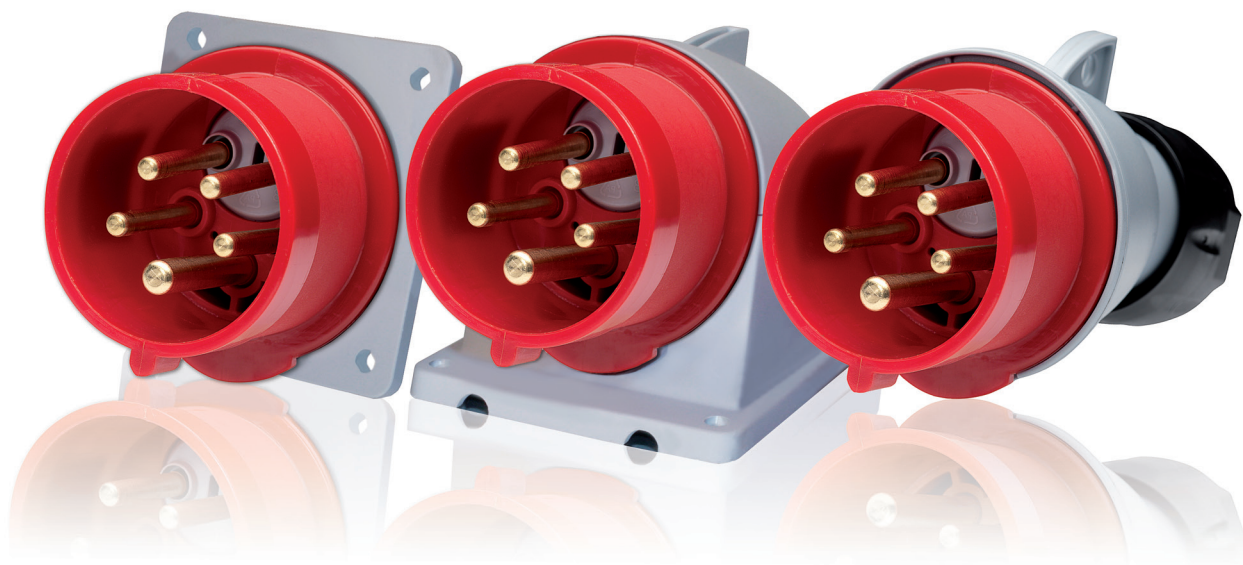


# Phase sequence inverters

## For functionality and productivity

At ABB Cewe in Sweden we have a long experience in designing and producing high quality industrial plugs & sockets. Our focus is to supply demanding customers with products which are perfect for their specific application. In addition to high quality, safety and reliability we also focus hard on functionality.

2CMC710002L0201, Sep 2012 Prod ABB AB, Cewe/XM, Ver. A



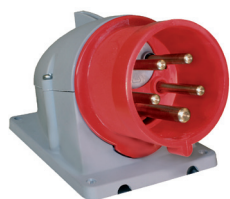
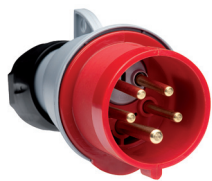
### Products with extra functionality

A good example of products with extra functionality is the phase inverters. Phase inverter plug/inlet from ABB is available as plug, surface inlet and panel inlet. A phase inverter plug is a good way for manufacturers of portable 3-phase equipment such as motors and pumps as well as manufacturers of extension cords to add customer value to their products.

A contractor showing up on a site for a job and noticing that his equipment is working in wrong direction will lose time on rewiring his standard plug, if instead his equipment is connected with a phase inverter plug he can change the phase sequence within a few seconds and start the job he is there to do without losing time.

### More attractive offer

At ABB Cewe we are currently focusing on improving our offer of phase inverters, during this year we will take several steps towards a more attractive offer. First step is to optimize the production of 16A plug, surface inlet and panel inlet; this will make it possible for us to offer an even more competitive price to the market.



Enclosure in thermoplastic. 16 A. IP44. Splashproof. Standard IEC 60 309-2

#### Surface outlet shifter

Cable area/Connection area 1-2.5 mm<sup>2</sup>

Terminal/Poles	Voltage (V)	Frequency (Hz)	Type	Order code	Weight kg/ea
5 (3P+N+E)	346-415	50 and 60	416PFV6	2CMA168131R1000	0.19

#### Surface inlet shifter

Cable area/Connection area 1.5-4 mm<sup>2</sup>

5 (3P+N+E)	346-415	50 and 60	416BSFV6	2CMA168169R1000	0.20
------------	---------	-----------	----------	-----------------	------

#### Surface inlet shifter

Cable area/Connection area 1.5-4 mm<sup>2</sup>

5 (3P+N+E)	346-415	50 and 60	416BUFV6	2CMA168159R1000	0.14
------------	---------	-----------	----------	-----------------	------

For more information, please contact

**ABB AB**

**Cewe**

Box 1005

SE-611 29 NYKÖPING, Sweden

Phone: +46 155 29 50 00

Fax: +46 155 28 81 10

[www.abb.com](http://www.abb.com)

Power and productivity  
for a better world™

