

LEAFLET

Industrial plugs and sockets

The new Fast & Safe



In times with high focus on productivity screwless terminal connectors are growing in popularity. Actually up sixty percent of the installation time can be saved with screwless terminals.

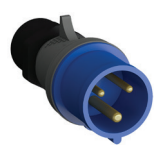
We are now completing our standard offering with Fast & Safe in parallel with Easy & Safe. Fast & Safe is a complete offering of 16-32A plugs and sockets, both as IP44 and IP67. Instead of a screw providing contact pressure at the terminal, Fast & Safe is built on spring technology.

More than reducing installation time spring technology has high resistance against vibrations and heat fluctuations.

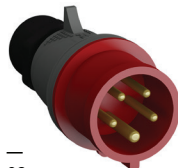
Screwless terminals = quick installation.

Industrial plugs and sockets

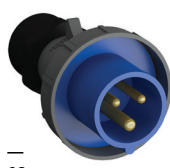
Fast & Safe



01



02



03



04



05



06



07



08



09



10



11



12



13



14



15



16



17



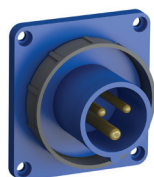
18



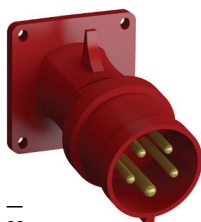
19



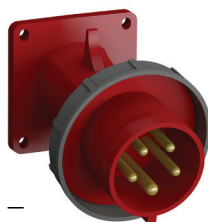
20



21



22



23

Plugs

- 01 Type QP..., 16...32 A, IP44
- 02 Type QP..., 16...32 A, IP44
- 03 Type QP... W, 16...32 A, IP67
- 04 Type QP... W, 16...32 A, IP67

Connectors

- 05 Type QC..., 16...32 A, IP44
- 06 Type QC..., 16...32 A, IP44
- 07 Type QC... W, 16...32 A, IP67
- 08 Type QC... W, 16...32 A, IP67

Wall mounted surface inlets

- 09 Type QBS..., 16...32 A, IP44
- 10 Type QBS... W, 16...32 A, IP67

Wall mounted surface outlets

- 11 Type QRS..., 16...32 A, IP44
- 12 Type QRS... W, 16...32 A, IP67

Panel mounted socket outlets

- 13 Type QR..., 16...32 A, IP44
- 14 Type QRA..., 16...32 A, IP44
- 15 Type QRA... W, 16...32 A, IP67
- 16 Type QR... W, 16...32 A, IP67
- 17 Type QRM..., 16...32 A, IP44
- 18 Type QRM... W, 16...32 A, IP67

Panel mounted socket inlets

- 19 Type QBM..., 16...32 A, IP44
- 20 Type QBM..., 16...32 A, IP67
- 21 Type QB... W, 16...32 A, IP67
- 22 Type QBA..., 16...32 A, IP44
- 23 Type QBA... W, 16...32 A, IP67

ABB AB
Electrification Products

Box 1005
SE-611 29 NYKÖPING, Sweden
Phone: +46 155 29 50 00
Fax: +46 155 28 81 10

www.abb.com/industrialplugs

Below QR-code is linked to our web site
[www.abb.com/lowvoltage/Industrial plugs and sockets](http://www.abb.com/lowvoltage/Industrial%20plugs%20and%20sockets).
You will have to download a QR-code reader app to your
phone in order to use it.



© Copyright 2017 ABB. All rights reserved.
Specifications subject to change without notice.