

SMART POWER

Z-Busbar system

400 A & 630 A

1600 A & 2500 A



Z-busbar system

400 A & 630 A



PB 600-Z4

Z-phase busbar with IP2X insulation

Separate busbars for wall mounting or as sparepart for cable distribution cabinets.
Busbar support for wall mounting (PBSZ) is ordered separately.

Designation	Order code	Usable busbar length [mm]	Current [A]	Suitable for cabinet	No/batch	Weight [kg]
PB 350 Z4	2CGD000564A1000	261	400	NC350	1	0,2
PB 350 Z6	2CGD000564A1001	261	630	NC350	1	0,3
PB 600 Z4	2CGD000564A1003	511	400	NC600	1	0,4
PB 600 Z6	2CGD000564A1004	511	630	NC600	1	0,6
PB 850 Z6	2CGD000564A1007	761	630	NC850	1	0,9
P-RAIL MJS K00 Z AL	2CMA125694R1000	317	630	MJS 00	1	0,5
F-RAIL CPL.MJS K0 Z AL	2CMA125695R1000	517	630	MJS 0	1	0,9
F-RAIL CPL.MJS K1 Z AL	2CMA125696R1000	767	630	MJS 1	1	1,3
F-RAIL CPL.MJS K2 Z AL	2CMA125697R1000	967	630	MJS 2	1	1,7
F-RAIL CPL.MJS K3 Z AL	2CMA125698R1000	1267	630	MJS 3	1	2,1
Z-Busbar 1078-6 I	2CGD000449A1000	1055	630	-	1	0,9
Z-Busbar 553-4 I	2CGD000448A1000	530	400	-	1	0,4



PENB 600-Z4

PEN-busbar

PEN-busbars for wall mounting or as sparepart for cable distribution cabinets.
Busbar support for wall mounting (PENBSZ) is ordered separately.

Designation	Order code	Usable busbar length [mm]	Current [A]	Suitable for cabinet	No/batch	Weight [kg]
PENB 350 Z4	2CGD000565P1000	238	400	NC350	1	0,2
PENB 600 Z4	2CGD000956A1000	487	400	NC600	1	0,3
PB 850 Z4	2CGD000957A1000	737	400	NC850	1	0,4
MJSPEN30x400	2CMA125681R1000	334	400	MJS 00	1	0,2
MJSPEN30x600	2CMA125682R1000	534	400	MJS 0	1	0,3
MJSPEN30x850	2CMA125683R1000	784	400	MJS 1	1	0,4
MJSPEN30x1050	2CMA125684R1000	984	400	MJS 2	1	0,5
MJSPEN30x1350	2CMA125685R1000	1284	400	MJS 3	1	0,7



NB 600-Z4

N-busbar

N-busbars for wall mounting or as sparepart for cable distribution cabinets.
Busbar support for wall mounting (NBSZ) is ordered separately.

Designation	Order code	Usable busbar length [mm]	Current [A]	Suitable for cabinet	No/batch	Weight [kg]
NB 350 Z4	2CGD000564A1002	247	400	NC350	1	0,2
NB 600 Z4	2CGD000564A1005	497	400	NC600	1	0,4
NB 850 Z4	2CGD000564A1008	747	400	NC850	1	0,6

Busbar support for wall mounting

Busbar supports for phase-, PEN- and N-busbars. Delivered as a pair (right and left).

Designation	Order code	Suitable for busbar	No/batch	Weight [kg]
PBSZ (phase rail support)	2CGD000958A1000	400 A and 630 A	2	0,8
PENBSZ	2CGD000959A1000	-	2	0,1
NBSZ PEN-support (K)	2CGD000960A1000	400 A	2	0,4

Busbar kit for wall mounting

The kit contains 3 phase busbars, 1 PEN-busbar and busbar support.

Designation	Order code	Usable busbar length [mm]	Current [A]	Suitable for cabinet	No./batch	Weight [kg]
CDC#BS 630/1250	2CMA125346R1000	1160	630	-	1	12
CDC#BS 630/900	2CMA125345R1000	810	630	-	1	8

Complete system for rebuilding cable distribution cabinet

Contains phase busbars, PEN-busbar, consoles and rear insulation.

Designation	Order code	Usable busbar length [mm]	Current [A]	Suitable for cabinet	No./batch	Weight [kg]
CDC#SZ 360-6 Busbar system	2CMA124125R1000	282	630	ND 360	-	2
CDC#SZ 610-6 Busbar system	2CMA124127R1000	534	630	ND 610	-	4
CDC#SZ 930-6 Busbar system	2CMA124329R1000	849	630	ND 930	-	6,5
CDC#SZ 1280-6 Busbar system	2CMA124331R1000	1199	630	ND 1280	-	8,5

Z-busbar system

1600 A & 2500 A



Z-busbar 1600 A



Z-busbar 2500 A



Rear Z-insulation



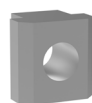
Front Z-insulation



Side insulation



ZX153



T-slot nut

Z-busbar

1600 A & 2500 A busbars are delivered without IPX2-protection, which is ordered separately. The busbars are made of aluminium and plated with tin. Connected busbars can be of copper.

Designation	Order code	Length [mm]	Current [A]	Recommended batch size
Z-busbar 1600A 1200mm Z Al	2CMA100041R1000	1200	1600	60
Z-busbar 1600A 1600mm Z Al	2CMA100042R1000	1600	1600	30
Z-busbar 1600A 1800mm Z Al	2CMA100043R1000	1800	1600	20
Z-busbar 1600A 2200mm Z Al	2CMA100044R1000	2200	1600	20
Z-busbar 2500A 1600mm Z Al	2CMA100037R1000	1600	2500	20
Z-busbar 2500A 1800mm Z Al	2CMA100038R1000	1800	2500	20
Z-busbar 2500A 2200mm Z Al	2CMA100039R1000	2200	2500	20

IP2X insulation

Rear- front- and side insulation is required to guarantee full IP2X-protection. Black front insulation is usually used for phase-busbars, and blue front insulation for the N-busbar. The insulation fits both 1600 A and 2500 A busbars.

Designation	Order code	Length [mm]	MOQ
Rear Z-insulation 1200mm	2CMA100046R1000	1200	12
Rear Z-insulation 1200mm	2CMA100047R1000	1600	12
Rear Z-insulation 1200mm	2CMA100048R1000	1800	12
Rear Z-insulation 1200mm	2CMA100049R1000	2200	12
Front Z-insulation Black	2CMA100051R1000	20pc x 488mm + 20pc x 378mm Total length per package 17.32 m	20 (1 package)
Front Z-insulation Blue	2CMA100053R1000	10pc x 488mm + 10pc x 378mm Total length per package 8.66 m	10 (1 package)
Side insulation	2CMA100054R1000	-	24

Busbar support

For busbars with a length of over 1 meter an extra support is recommended in the middle.

Designation	Order code	Current [A]	MOQ
ZX153 support phase busbar	2CPX044008R9999	2500	1
ZX522 support phase busbar	2CPX067909R9999	1600 A	1
ZX563 support PEN/N busbar	2CPX068735R9999	-	1

T-slot nut

The t-slot nut is used for connecting to the back of the phase busbar and is only available for 2500 A busbars. When connecting to the back of the 1600 A busbar a hole needs to be drilled and the connecting busbar screwed.

Designation	Order code	MOQ
T-slot nut	2CMA100056R1000	12



ABB Electrification Sweden AB
BOX 531
SE-441 15 Alingsås, Sweden
Tel: + 46 21 32 50 00
e-mail: kundservice.kabeldon@se.abb.com

abb.com/lowvoltage