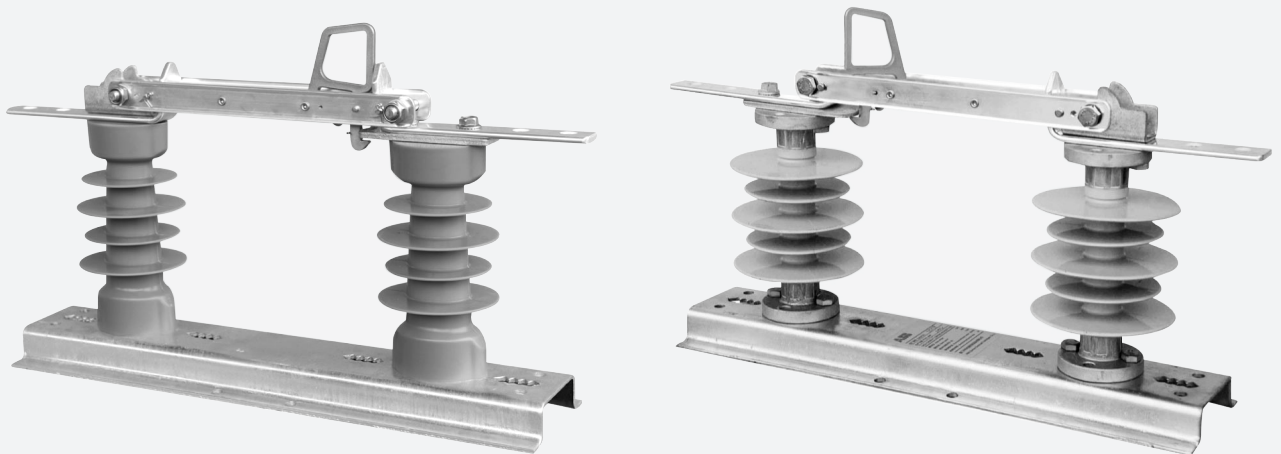


CATALOG

**DCD**

pole mounted disconnect



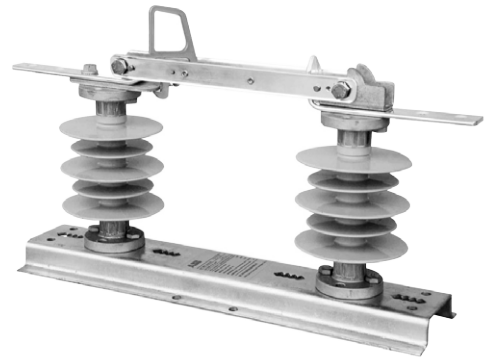
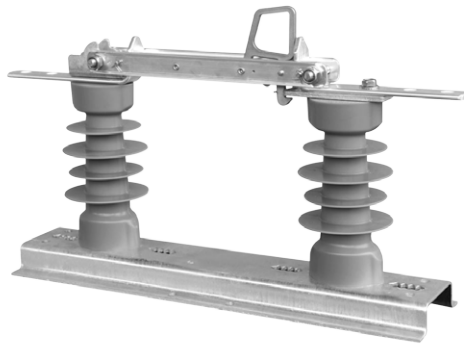




# Contents

<b>General</b>	04
<b>Features and ratings</b>	05
<b>Ordering instructions</b>	06
<b>Installation</b>	07

# General



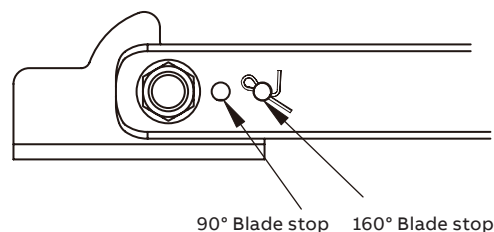
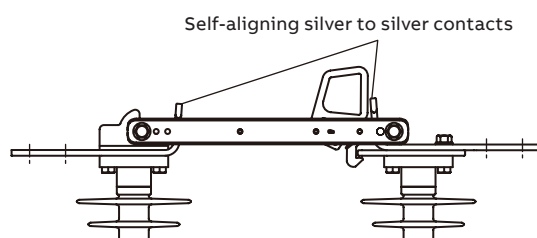
The DCD pole mounted disconnector, hook stick-operated switch used to isolate circuits on electrical distribution systems up to 24 kV. The DCD provides a visible breakpoint for maintenance person. This product is not a load-break device, and it is not designed to be opened under load.

## Standards

- |               |   |
|---------------|---|
| IEC 62271-102 | High-voltage switchgear and controlgear - Part 102: Alternating current disconnectors and earthing switches |
| GB/T 11022    | Common specifications for high-voltage switchgear and controlgear standards                                 |
| GB/T 1985     | High-voltage alternating-current disconnectors and earthing switches  |



# Features and ratings



## Features

Base and back strap: strengthened channel of galvanized steel for corrosion protection and solid operation.

Insulators available in silicone, outdoor epoxy and porcelain.

Self-aligning silver to silver contacts ensure long life.

Standard two-hole NEMA plated pad or optional two-piece parallel groove.

## Operation

The pull-ring activates the latch as a pry-out lever for easy opening and ice breaking.

A blade stop limits the blade range of motion to the 90° and 160° positions.

## Mounting

The DCD can be mounted in the following configurations:

- Vertical or underhung
- Pole mounted
- Single or double crossarm

## Ratings

Type		DCD-12/630		DCD-12/1250		DCD-24/630	DCD-24/1000
		DCD-12/630 (P)	DCD-12/630 (E)	DCD-12/1250 (E)	DCD-12/1250 (P)		
Rated voltage		12kV	12kV	12kV	12kV	24kV	24kV
Rated current		630A	630A	1250A	1250A	630A	1000A
Rated frequency		50Hz	50Hz	50Hz	50Hz	50Hz	50Hz
Short-time withstand current		25kA/3s	25kA/3s	25kA/3 s	25kA/4s	20kA/3s	25kA/4s
Peak withstand current		63kA	63kA	65kA	63kA	50kA	63kA
Power frequency withstand voltage (Dry 1min)	To earth	42kV	42kV	42KV	42KV	65kV	65kV
	Across the isolating distance	48kV	48kV	48kV	48kV	79kV	79kV
Power frequency withstand voltage (Wet 1min)	To earth	42kV	42kV	42kV	42kV	50kV	50kV
	Across the isolating distance	48kV	48kV	48kV	48kV	64kV	64kV
Lightning impulse withstand voltage	To earth	96kV	96kV	96kV	96kV	125kV	125kV
	Across the isolating distance	109kV	109kV	109kV	109kV	145kV	145kV
Creepage distance	Silicon insulator	-	≥372mm	≥372mm	-	≥694mm	≥694mm
	Outdoor epoxy insulator	-	≥372mm	≥372mm	-	-	-
	Porcelain insulator	≥372mm	-	-	≥372mm	-	-
Resistance of main circuit		≤62μΩ	≤62μΩ	≤32μΩ	≤38μΩ	≤70μΩ	≤60μΩ
Mechanical endurance		3000 CO	3000 CO	2000 CO	3000 CO	2000 CO	2000 CO

12kV DCD Max. Altitude (Applicable): 3000m, if above 3000m, Please contact ABB.

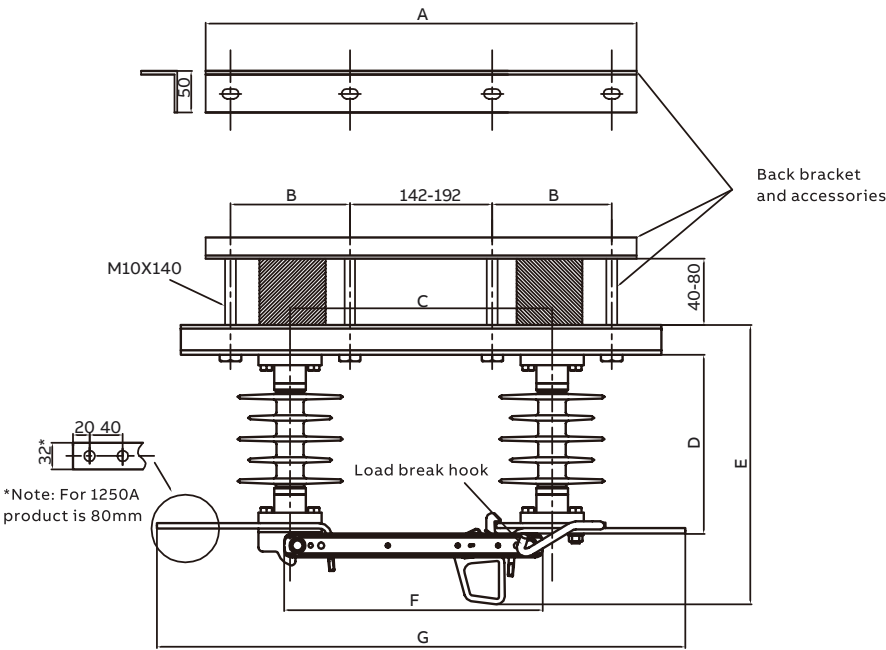


# Ordering instructions

## Description of product model

		DCD - 12 / 630 (E) - A			
Type DCD disconnecter					
Rated voltage	12kV	12			
	24kV	24			
Rated current	630A		630		
	1000A		1000 <sup>*2</sup>		
	1250A		1250 <sup>*1</sup>		
None: silicone insulator				(E) <sup>*1</sup>	
Epoxy insulator				(P) <sup>*1*3</sup>	
Porcelain insulator					A
W/back bracket, w/o load break hook					B <sup>*4</sup>
W/back bracket, w/ load break hook					N
W/o back bracket, w/o load break hook					

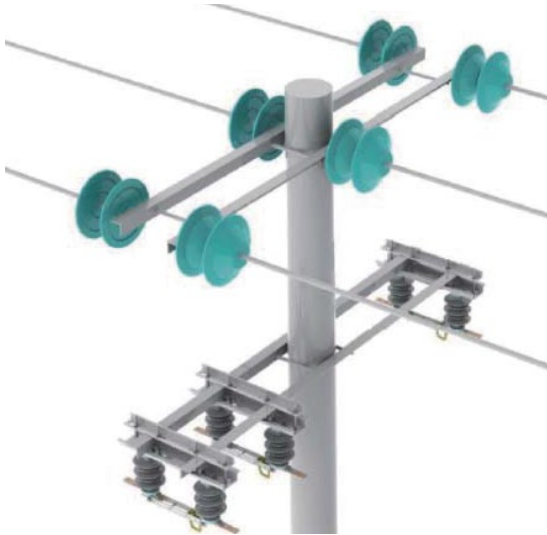
Note:  
\*1: 12 kV available.  
\*2: 24 kV available.  
\*3: 630 A, 1250 A available.  
\*4: Silicone & Epoxy insulator available.



Product	A (mm)	B (mm)	C (mm)	D (mm)	E (mm)	F (mm)	G (mm)
12kV 630A porcelain product	430	135-155	256	220	371	275	470
12kV 1250A porcelain product	430	130-155	256	216	375	275	470
12kV silicone or outdoor epoxy product	530	118-169	316	203	339	312	588
24kV silicone or outdoor epoxy product	667	162-213	403	228	364	399	675



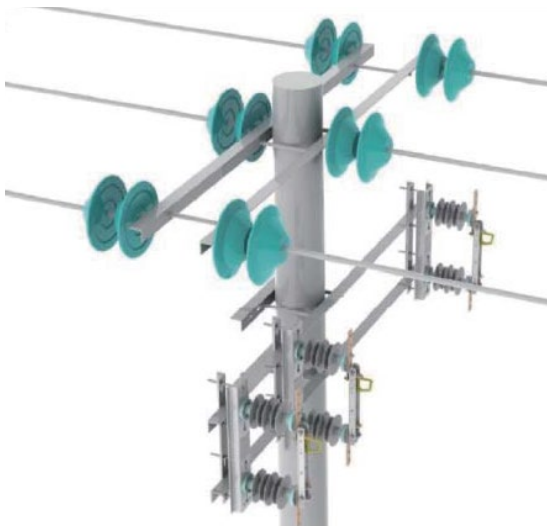
# Installation



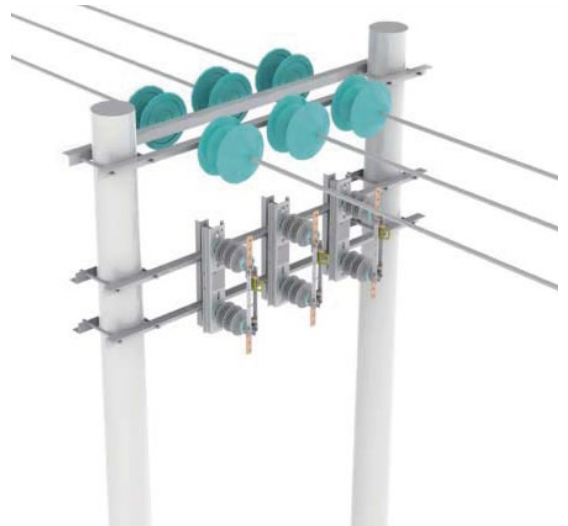
01 Single pole underhung



02 Double pole underhung



03 Single vertical



04 Double pole vertical

# ABB Connect

## The digital assistant for all your electrification needs

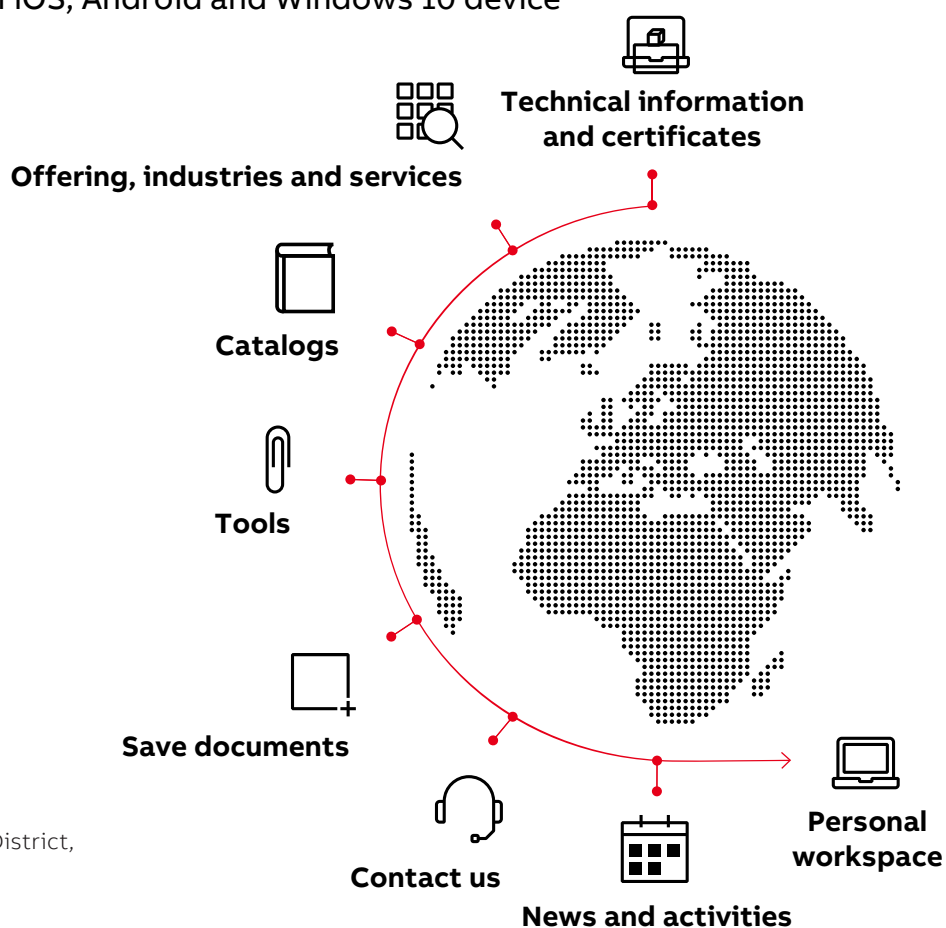
ABB Connect helps you to find product information and stay connected to the latest news and tools. It's a digital assistant that enables customers to connect to the broadest range of electrification solutions in one place.

- Easy to find what you need by search
- Get all information about our products, applications, selection guides, installation manuals, service, certificates, and engineering tools, etc.
- Saving documents locally, updating automatically.
- Receive your expected messages
- Online customer service

You can use ABB Connect on iOS, Android and Windows 10 device



Scanning QR code  
to enter ABB Connect



### ABB Xiamen Switchgear Co., Ltd.

No. 885, FangShanXiEr Road, Xiang'an District,  
Xiamen, Fujian, 361101

Tel: 0592 602 6033

Fax: 0592 603 0505

### ABB China Customer Service Hot Line

Tel: 800-820-9696 / 400-820-9696

Email: cn-ep-hotline@abb.com

[www.abb.com](http://www.abb.com)