

**—**  
MEDIUM VOLTAGE PRODUCTS

**OP1**

Current transformers

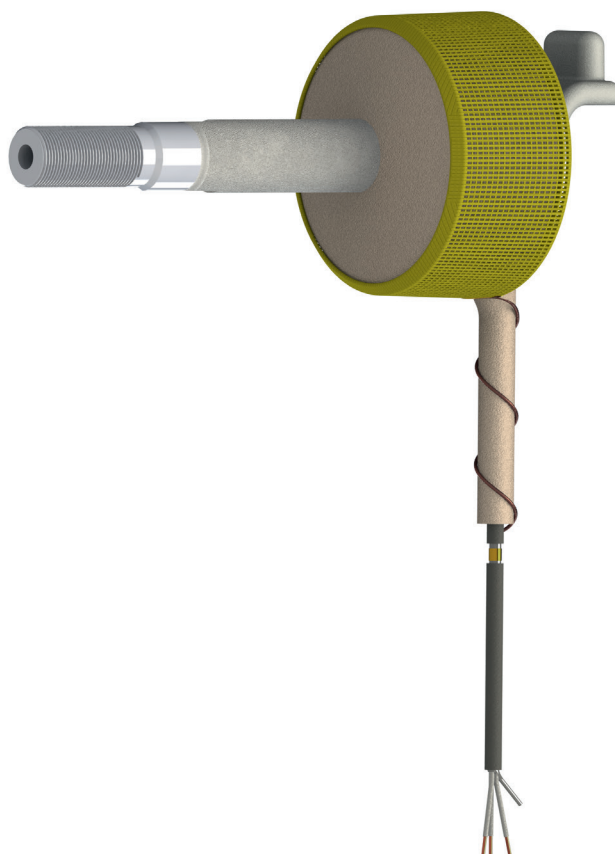


ABB offer instrument transformers universal in applications to whole area of industry and business. One of them is OP1 current transformer designed for outdoor embedded poles. Current transformer is located inside of the horizontal terminal of outdoor embedded pole and is connected to the vacuum interrupter. The OP1 current transformer makes the embedding technique advantageous, since it implements protection purposes and voltage indication all in one.

The maintenance-free OP1 current transformers are known for the compact dimension and sturdy design. ABB outdoor embedded poles are equipped with these current transformers which is reliable component to protect an electrical circuit from damages caused by overcurrent.

OP1 current transformer's active parts are casted into the epoxy resin by using the latest technological processes. Active parts are thereby protected against humidity, dust and vibrations. Instrument transformers made by ABB are the guarantee of quality and reliability.

#### OP1 current transformer

The combination of silver-coated sandblasted copper and epoxy resin gives the instrument transformer great performance to be a solid part of an embedded pole. OP1 is designed for protective purposes and equipped with capacity detector for safety voltage indication.

#### Ratings:

- Rated voltage: 27 kV or 38 kV
- Ratio: 600//1 A
- Dimensions: 286.4 x 116 x 208 mm
- Weight: 3.05 kg

Every OP 1 is subjected to a routine test which guarantees proper functionality.

#### Area of usage

As core components of outdoor embedded poles, OP1 current transformers are used in all areas of power generation, distribution and consumption in industry and buildings. Together with outdoor embedded poles contribute to the efficient use of energy, and thus not only protect the environment and climate, but also reduce costs for our partners.

#### Technical overview

Insulation level	27 kV or 38 kV
Ratio	600//1 A
Accuracy class	10P20
Burden	1 VA
Frequency	60 Hz
Standard	IEC 60044-1
Capacity for voltage indication	20 pF ± 2 pF

#### Applications

Main area of usage of OP1 current transformers is inside of the outdoor embedded poles which are intended for the reclosers and the switch applications. Together with OP1 current transformer is outdoor embedded pole equipped with vacuum interrupter.

The basic function of a recloser is to detect a fault, interrupt the current flow only for time of the fault and automatically restore a power to a line after end of fault. The result of using reclosers is increasing availability of power supply.



#### The applications are suitable for apply in:

Power plants

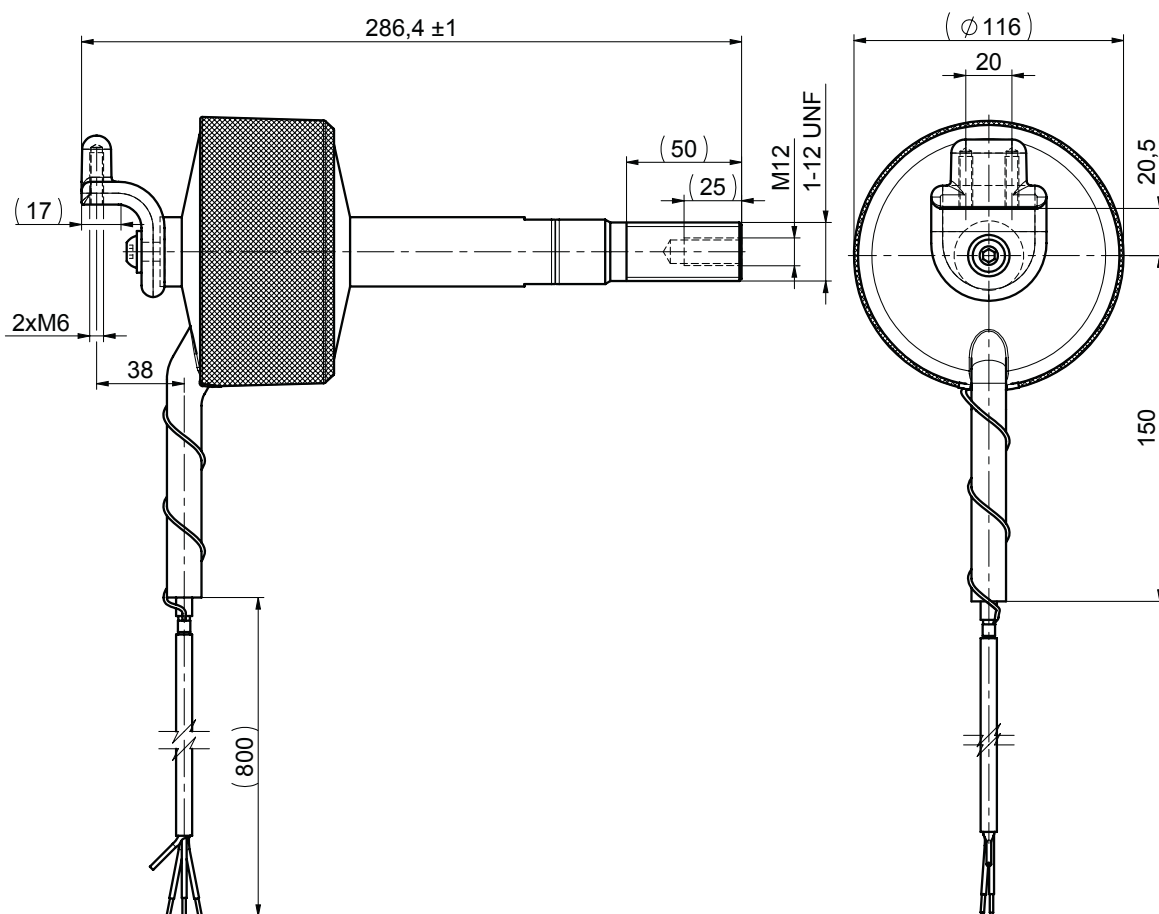
Transformer substations

- Chemicals industry
- Steel industry
- Automobile industry
- Airport power supply
- Marine applications
- Power supply to buildings

## Dimensional Drawings

—  
**OP1**

Weight: 3,05 kg



Red - S1  
Black - S2  
White - Capacitive driver

---

#### CONTACT US

ABB s.r.o.  
ELDS Brno  
Videnska 117, 619 00 Brno,  
Czech Republic  
Tel.: +420 547 152 021  
+420 547 152 854  
Fax: +420 547 152 626  
E-mail: kontakt@cz.abb.com

---

#### NOTE

We reserve the right to make technical changes or modify the contents of this document without prior notice. With regard to purchase orders, the agreed particulars shall prevail. ABB does not accept any responsibility whatsoever for potential errors or possible lack of information in this document.

We reserve all rights in this document and in the subject matter and illustrations contained therein. Any reproduction, disclosure to third parties or utilization of its contents - in whole or in parts - is forbidden without prior written consent of ABB.

Copyright© 2020 ABB  
All rights reserved