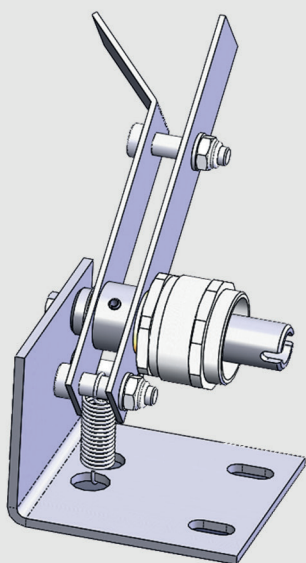


MEDIUM VOLTAGE SERVICE

FSKII+

Addendum to FSKII+

Instruction for updating Manual Tripping



Index:

For your safety!	2
1. Scope	3
2. Kit composition	4
3. Instructions	5

Should the customer's personnel be in charge of maintenance, the customer is responsible for any operation performed on the apparatus. When performing routine checks and maintenance operations, deenergize all the components. Always work with the apparatus open and locked so that it cannot be closed again, with the work area insulated and made safe. All power supply sources must be disconnected and made safe against any reclosing during removal and installation work. Read and understand this manual before beginning installation, commissioning, or operating the product.



DANGER

There are hazards of electrical shocks and/ or burns whenever working in or around electrical equipment. Turn off power ahead of the switchgear before performing any inspection or maintenance operations. Check incoming line terminals to verify that the equipment is deenergized and grounded. Check out-going terminals to ensure that no back-feed condition exists.



DANGER

Always work with the apparatus open and locked so that it cannot be closed again, with the work area insulated and made safe. All power supply sources must be disconnected and made safe against any reclosing during removal and installation work.

For your safety!

- Make sure that the installation room (space and environment) is suitable for the electrical apparatus.
- Check that all the installation, putting into service and maintenance operations are carried out by qualified personnel with suitable knowledge of the apparatus.
- Make sure that the standard and legal prescriptions are complied with during installation, putting into service and maintenance, so that installations are performed according to the rules of good working practice and safety in the work place.
- Strictly follow the information in this instruction manual
- Check that the rated performance of the apparatus is not exceeded during service.
- Check that the personnel operating the apparatus have this instruction manual at hand as well as the necessary information for correct use.
- Appropriate PPE must be worn at all times.
- Only use original spare parts for maintenance operations. Use of not original spare parts could lead to dangerous faults, in which case the warranty would become void.
- Pay special attention to the danger notes indicated in the manual by the following safety notifications:



WARNING

Indicates a hazardous situation that has some probability of severe injury and substantial property damage.



DANGER

Indicates a hazardous situation that has a high probability of death, severe injury, and substantial property damage.



DANGER

Before starting, check with your local HSE manager for the latest safety requirements required for these activities, with special attention for the works at height

1. Scope

The purpose of the instruction is to replace the pins for the manual single operation of the disconnectors if present or to assemble them if not present.

2. Kit composition

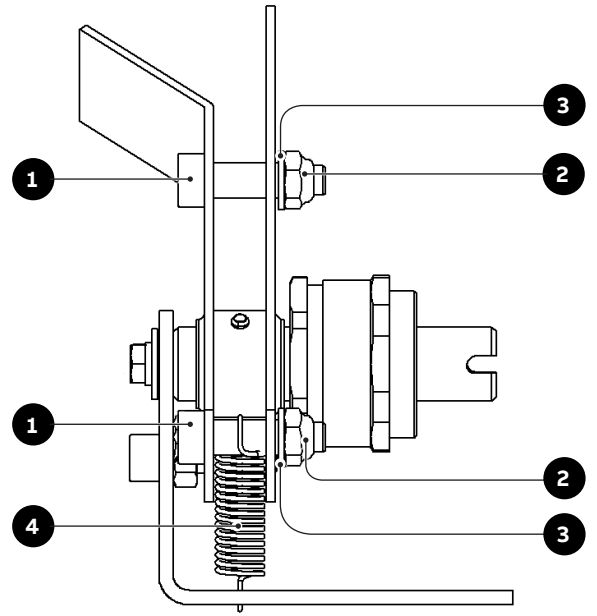
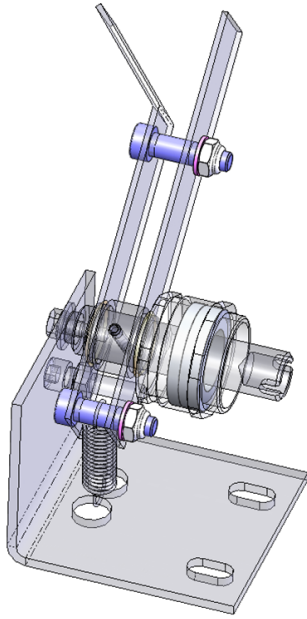


Table1

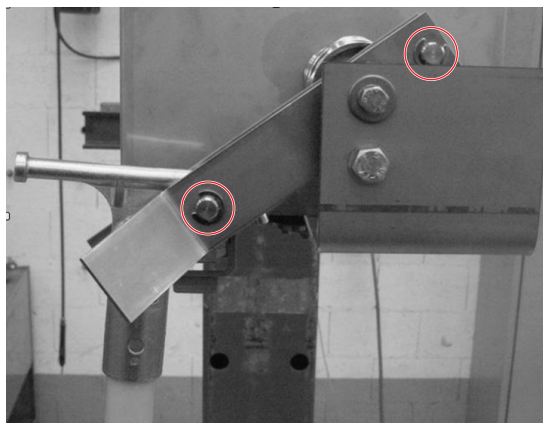
Item	Description
1	Screw ISO7379 M12X25-A
2	Nut DIN985 SS A
3	Washer ISO7089_10/20X2-A4/PL
4	Spring Traction DIN17224

3. Instructions



DANGER

It must be verified that the switch is in the open position and that the cables to which the device is connected are disconnected

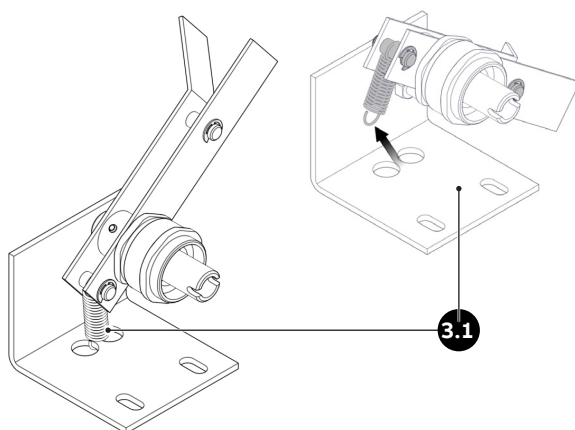


Operations:

replace the two pins with two screws

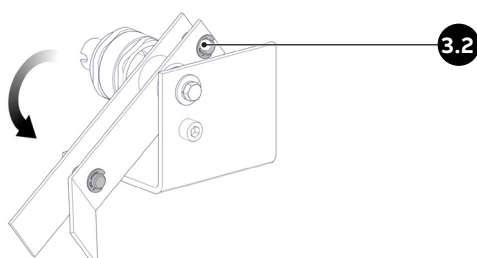
Note:

if the pins and the spring are not present, you must start from STEP 3.6



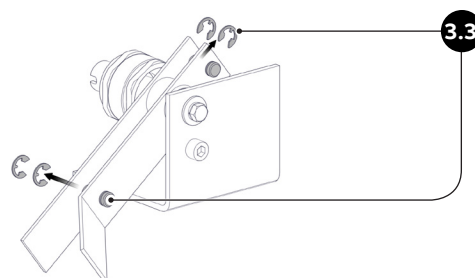
3.1

Disconnect the spring from the holder



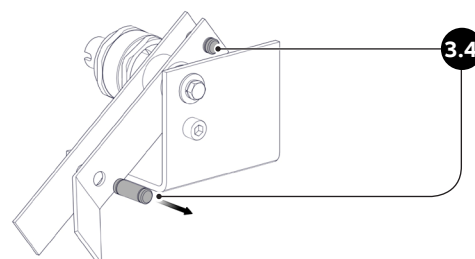
3.2

Rotate the mechanism as far as the pin will be visible



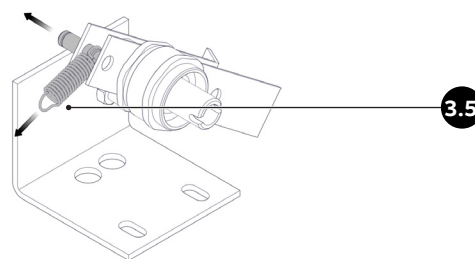
3.3

Remove elastic rings (seeger)



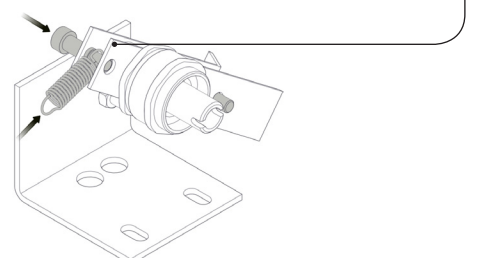
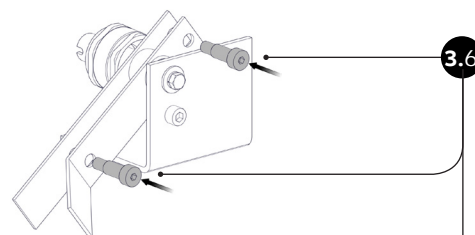
3.4

Remove the pins



3.5

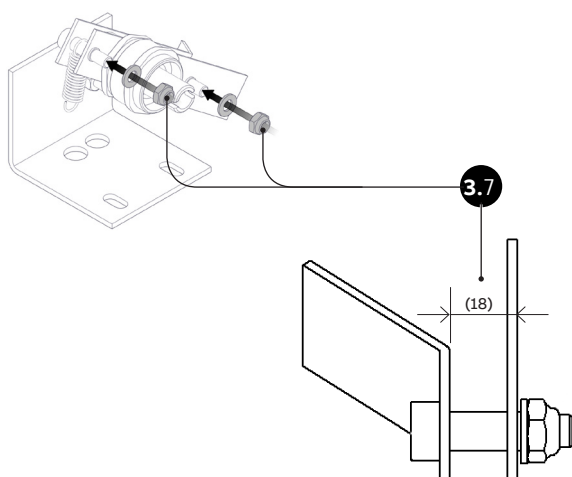
Keep the spring for reassembly



3.6

Insert the screws item 1 and position the spring item 4 of Table 1

3. Instructions



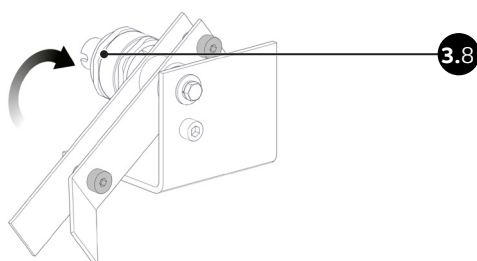
3.7

insert washers item 2 and assemble the nuts item 3 of Table 1 and close, verifying that the distance of the two blades is $18 \pm 1\text{mm}$



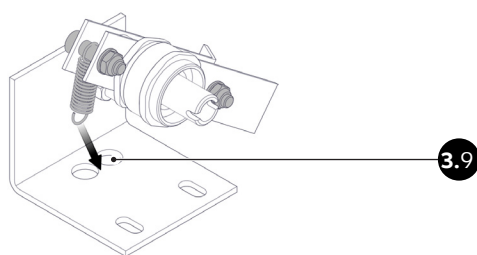
WARNING

Failure to comply with the
Distance of 18mm
Compromises the correct operation of the
apparatus



3.8

Turn lever until the mechanical stop.



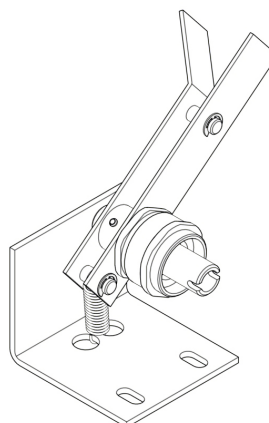
3.9

Engage the spring item 4 of Table 1 to the holder



WARNING

Ensure the correct hooking of the spring with its
holder



WARNING

If any damaged parts are detected during the
replacement operations, please contact abb

More product information:
abb.com/mediumvoltage
Your contact center:
abb.com/contactcenters
More service information:
abb.com/service

The data and illustrations are not binding. We reserve the right to modify the contents of this document following technical developments.

© Copyright 2022 ABB. All rights reserved.