

## INSTRUMENT TRANSFORMERS

# VOG-15B

## Outdoor voltage transformer



The VOG-15B is a robust voltage transformer for use in line-to-ground applications.

### Product features

- 25 kV, outdoor
- 150 kV BIL, 60 Hertz
- Electrical clearances:
  - Strike: 21.6" (549 mm)
  - Creep: 50.2" (1277 mm)
- Minimum operating temperature: -50° C
- Approximate weight: 125 lbs. (57 kg)

### Application

An optimal solution for line-to-ground metering applications, the VOG-15B offers superior performance in a compact design. Tapped and dual secondary windings are available upon request.

### Industry leading performance

Enhanced creep distance and intelligent shed design minimize flashover potential and provide superior heat dissipation. Encapsulated in field-proven HCEP material (hydrophobic cycloaliphatic epoxy), the VOG-15B delivers unparalleled performance in outdoor applications, including heavily polluted and coastal environments.

### Application

An optimal solution for line-to-ground metering applications, the VOG-15B offers superior performance in a compact design. Tapped and dual secondary windings are available upon request.

### Terminals

The electro-tin plated primary H1 bushing terminal accommodates #10 to 250 MCM conductors. The H2 neutral terminal is insulated to withstand a 19 kV test level and can be disconnected from the external ground cable for power factor measurement. Clamp-type secondary terminals accommodate #14 through #3 wire. Stud type terminals (0.750-16 x 1.125), ideal for use in primary metering cabinets and other applications, are available upon request.

### Junction box

The junction box has a 1" conduit hub on either end and a knock out for a 1" conduit fitting on the bottom. The box is anchored to the body of the transformer with screws and can be easily detached, simplifying installation and change-out procedures.

## Baseplate

The base is constructed of corrosion-resistant aluminum and is secured to the encapsulated base support.

## Mounting

The VOG-15B can be mounted in upright or cantilever positions. Stress relief devices should be used to support cable connections where applicable.

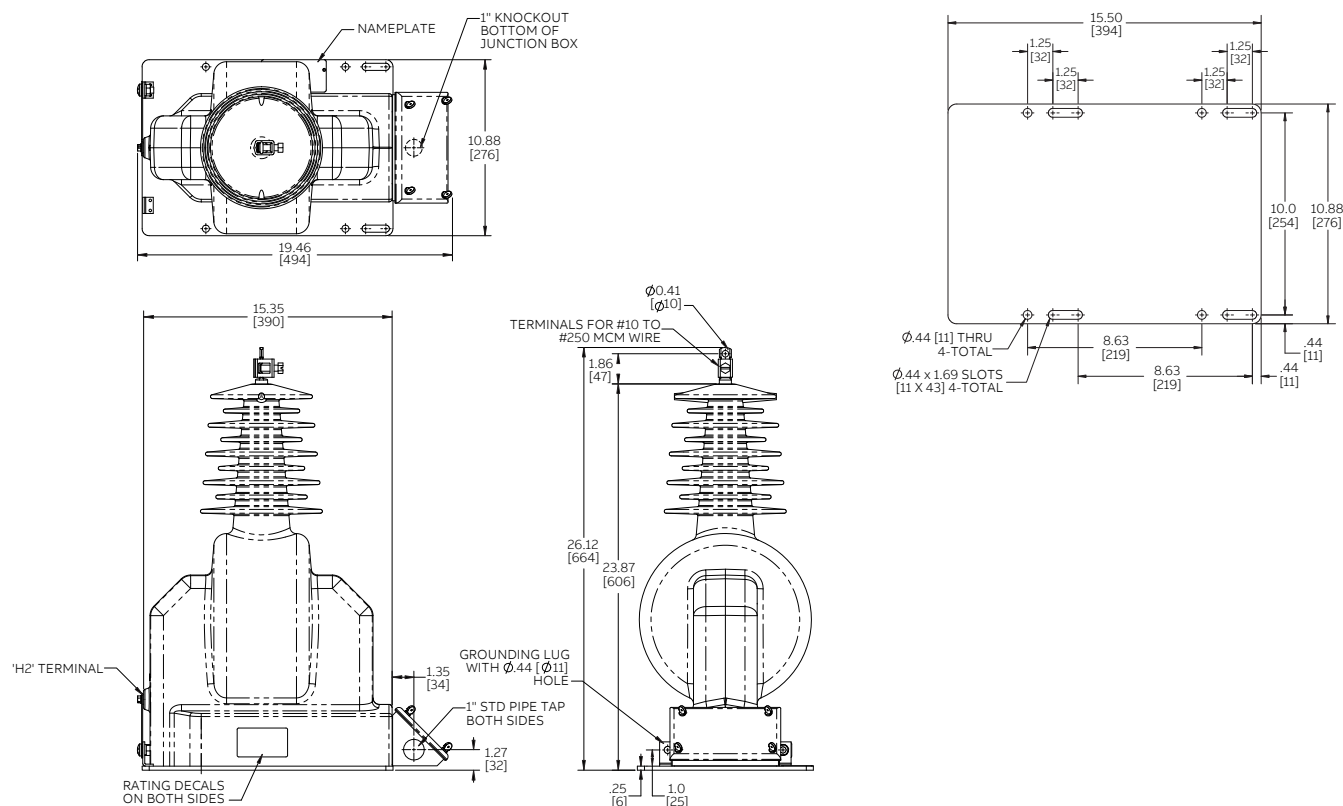
## Test reports

Test reports are stored electronically and can be e-mailed in various formats at the time of shipment.

## Standards

This unit meets or exceeds all requirements of IEEE C57.13-2016 and can be tested to other standards as requested.

## Dimensions (inches [mm])



## Selection guide

Primary voltage	Secondary voltage	Winding ratio	Metering accuracy	Thermal rating at 30° C	Rated voltage factor (RVF)*	Style number
12000/20780GY	120	100:1	0.3Y	1500	1.9	E-923A680G01
13200/22860GY	120	110:1	0.3Y	1500	1.9	E-923A680G02
14400/24940GY	120	120:1	0.3Y	1500	1.9	E-923A680G03

\* RVF for 8 hours

Additional styles available upon request. Contact your ABB sales representative or call +1-252-827-3212 for more information.