

INSTRUMENT TRANSFORMERS

VIL-95/95S and VIL-12/12S

Indoor voltage transformers



The VIL-95/95S and VIL-12/12S indoor voltage transformers are used for control power, relaying, or metering applications.

Product features

- VIL-95/95S: 15 kV, 95 kV BIL
- VIL-12/12S: 25 kV, 125 kV BIL
- Indoor, 60 Hertz

Application

The VIL-95/95S and VIL-12/12S indoor voltage transformers are used for control power, relaying, or metering applications. These products are primarily designed for use in vault applications where they may be submerged under water. The VIL-95S and VIL-12S are designed for submersible installation and the VIL-95 and VIL-12 are designed for intermittent submersible operation where they are not permanently submerged.

Construction features

These transformers are fully encapsulated in polyurethane to prevent water ingress and maintain reliable performance in applications where they may be submerged. The VIL-95 and VIL-12 are fitted with a secondary junction box suitable for applications where they may be temporarily flooded. The VIL-95S and VIL-12S are molded with secondary wires directly encapsulated into the polyurethane. This water-tight connection allows the VIL-95S and VIL-12S to be installed where they may be permanently submerged.

Terminals

Primary terminals are loadbreak bushing wells rated 200 amperes. Dead front elbow connectors are to be used for the primary connections. Compression-type secondary terminals accommodate #14 through #3 wire on the VIL-95 and VIL-12 and #12 wire (24" length) on the VIL-95S and VIL-12S.

Junction box

A junction box is provided on the VIL-95 and VIL-12 only. The box has a 1" conduit hub on both ends and a knockout for a 1" conduit fitting on the bottom. The box is anchored to the body of the transformer with screws and can easily be detached, simplifying installation and changeout procedures.

Baseplate

The baseplate is constructed of corrosion-resistant aluminum and secured to the encapsulated base support. The VIL-12/12S units include lifting lugs and are available with stainless steel baseplates.

Mounting

All four units are designed for vertical mounting only.

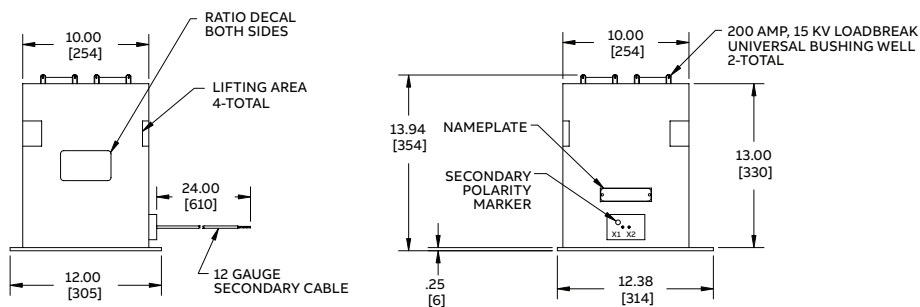
Type curves are available upon request.

Test reports are stored electronically and can be e-mailed in various formats at the time of shipment.

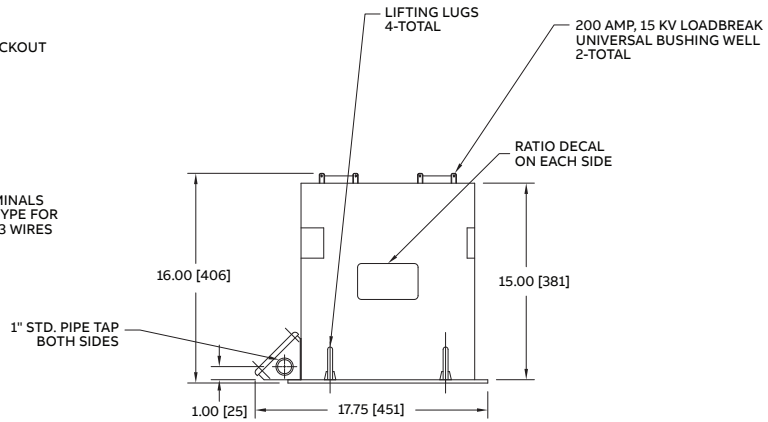
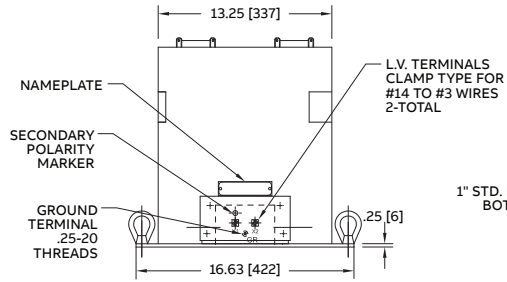
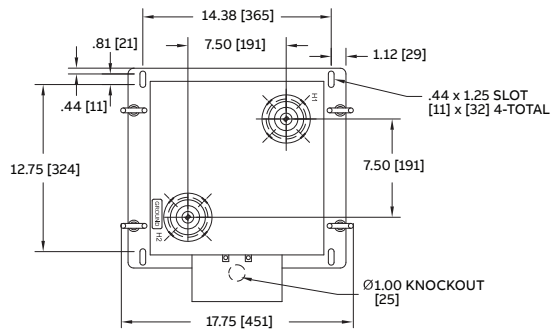
This unit meets or exceeds all requirements of IEEE C57.13-1993 and can be tested to other standards as requested.

Technical drawing of a rectangular plate with the following dimensions and features:

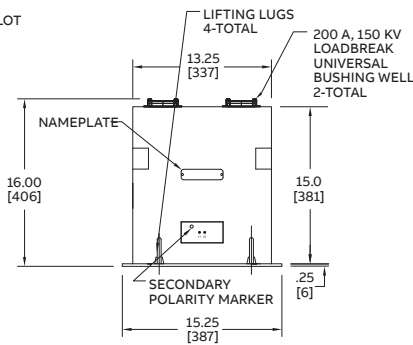
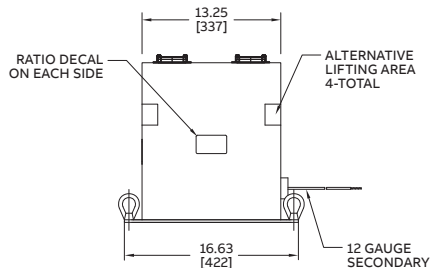
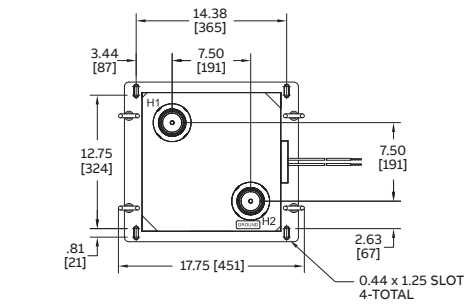
- Overall width: 11.13 [283]
- Distance from left edge to center of H1: 3.44 [87]
- Distance from center of H1 to center of H2: 4.25 [108]
- Distance from center of H2 to right edge: .44 [11]
- Overall height: 10.75 [273]
- Distance from bottom edge to center of H1: 4.25 [108]
- Distance from center of H1 to bottom edge: 4.25 [108]
- Distance from center of H2 to bottom edge: 2.88 [73]
- Feature H1: Hole with diameter Ø.44 [11]
- Feature H2: Hole with diameter Ø.44 [11]
- Feature 44 x 1.19 [11 x 30] SLOT 2-TOTAL: Slot on the right side of the plate.
- Feature .44 [11]: Small hole or feature on the right edge.



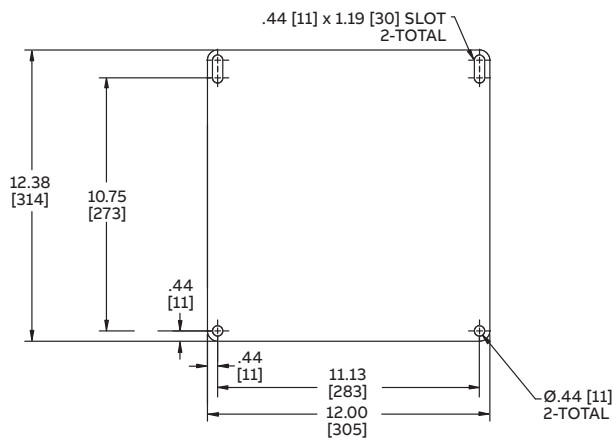
Type VIL-95S (approximate weight 105 lbs.)



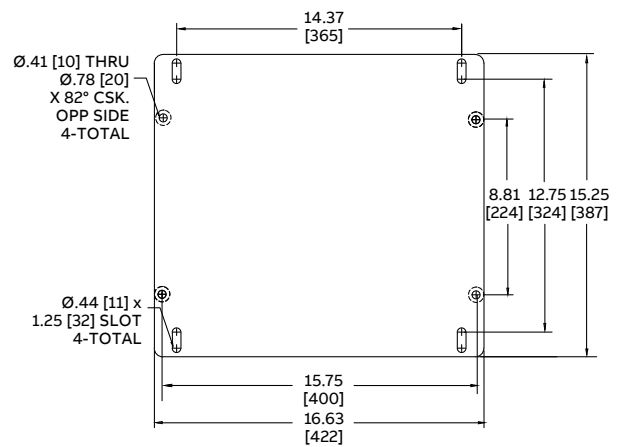
Type VIL-12 (approximate weight 210 lbs.)



Type VIL-12S (approximate weight 210 lbs.)



VIL-95/95S baseplate



VIL-12/12S baseplate

Selection guide						
Primary voltage	Winding ratio	IEEE metering accuracy	Rated voltage factor	Thermal rating		Style number
				30° C	55° C	
VIL-95 (no lifting lugs)						
2400/4160Y	20:1	0.3Z	1.1	1500	1000	7881A93G01
4200/7280Y	35:1	0.3Z	1.1	1500	1000	7881A93G02
4800/8320Y	40:1	0.3Z	1.1	1500	1000	7881A93G03
7200/12470Y	60:1	0.3Z	1.1	1500	1000	7881A93G04
7620/13200Y	63.5:1	0.3Z	1.1	1500	1000	7881A93G05
8400/14560Y	70:1	0.3Z	1.1	1500	1000	7881A93G06
12000/12000Y	100:1	0.3Z	1.1	1500	1000	7881A93G07
13200/13200Y	110:1	0.3Z	1.1	1500	1000	7881A93G08
14400/14400Y	120:1	0.3Z	1.1	1500	1000	7881A93G09
VIL-95S (no lifting lugs)						
2400/4160Y	20:1	0.3Y	1.4	750	500	7883A12G01
4200/7280Y	35:1	0.3Y	1.4	750	500	7883A12G02
4800/8320Y	40:1	0.3Y	1.4	750	500	7883A12G03
7200/12470Y	60:1	0.3Y	1.4	750	500	7883A12G04
7620/13200Y	63.5:1	0.3Y	1.4	750	500	7883A12G05
8400/14560Y	70:1	0.3Y	1.4	750	500	7883A12G06
12000/12000Y	100:1	0.3Y	1.4	750	500	7883A12G07
7970/13800Y	66.42:1	0.3Y	1.4	750	500	7883A12G08
6928/12000Y	57.73:1	0.3Y	1.4	750	500	7883A12G09
VIL-12						
7200/12470Y	60:1	0.3Z	1.1	1500	1000	923A362G01
7620/13200Y	63.5:1	0.3Z	1.1	1500	1000	923A362G02
8400/14560Y	70:1	0.3Z	1.1	1500	1000	923A362G03
12000/20780Y	100:1	0.3Z	1.1	1500	1000	923A362G04
14400/24940Y	120:1	0.3Z	1.1	1500	1000	923A362G05
18000/18000Y	150:1	0.3Z	1.1	1500	1000	923A362G06
24000/24000Y	200:1	0.3Z	1.1	1500	1000	923A362G07
VIL-12S						
7200/12470Y	60:1	0.3Y	1.1	1000	500	923A363G01
7620/13200Y	63.5:1	0.3Y	1.1	1000	500	923A363G02
8400/14560Y	70:1	0.3Y	1.1	1000	500	923A363G03
12000/20780Y	100:1	0.3Y	1.1	1000	500	923A363G04
14400/24940Y	120:1	0.3Y	1.1	1000	500	923A363G05
18000/18000Y	150:1	0.3Y	1.1	1000	500	923A363G06
24000/24000Y	200:1	0.3Y	1.1	1000	500	923A363G07
VIL-12S tapped						
12000/16340Y	136.17/100:1	0.3Y - 0.3Y	1.1	1000	500	923A317G03

Additional styles available upon request. Contact your ABB sales representative or call +1-252-827-3212 for more information.

Note: 50 Hz styles available

ABB Inc.
3022 NC 43 North
Pinetops, NC 27864
Phone: +1 252 827 3212

abb.com/mediumvoltage

We reserve the right to make technical changes or modify the contents of this document without prior notice. With regard to purchase orders, the agreed particulars shall prevail. ABB does not accept any responsibility whatsoever for potential errors or possible lack of information in this document.

We reserve all rights in this document and in the subject matter and illustrations contained therein. Any reproduction, disclosure to third parties or utilization of its contents – in whole or in parts – is forbidden without prior written consent of ABB Inc.
Copyright© 2019 ABB
All rights reserved