

TYPICAL WIRING DIAGRAM

WHEN SPACE FOR MAIN IS UTILIZED, SELECT A CIRCUIT BREAKER FROM THE TABLE (SPACE FOR MAIN). INSTALL THE MINIMUM WIRE SIZE AS SHOWN BETWEEN THE CB AND THE WIRING BLOCK. PLACE BREAKER ON THE INSULATOR PROVIDED AND ATTACH TO STAND WITH SCREWS PROVIDED.

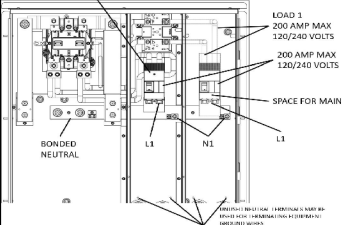
Service Barrier Kit
TSBRK2 installed

MIN. WIRE SIZE		
AMPS	CU	AL
100	1	1
125	1	2/0
150	1/0	3/0
175	2/0	4/0
200	3/0	250

PLANT SAL



CLASS CUL
ENCLOSED PANEL BOARD
ISSUE No C-3024



UL is a registered trademark used under license from General Electric company

WIRE RANGE

CONNECTOR	COPPER		ALUMINUM	
	SOLID	STRANDED	SOLID	STRANDED
NEUTRAL - N1	— —	1 - 300	— —	1 - 300
LOAD 1	— —	1 - 300	— —	1 - 300
GROUND	6 - 2/0	6 - 2/0	6 - 2/0	6 - 2/0

LUG TIGHTENING TORQUE (LB - IN)

SCREW TYPE	WIRE SIZE	TORQUE
SLOTTED	14 - 10	35
	8	40
	6/4	45
	3 - 2/0	50
INTERNAL HEX	3/16 ACROSS FLATS	120
	1/4 ACROSS FLATS	200
	5/16 ACROSS FLATS	275

IF SEMI-FLUSH MOUNTING BRACKETS ARE NOT REQUIRED, REMOVE AND REPLACE SCREWS IN EMPTY HOLES

ALUMINUM TERMINATIONS: TO HELP GUARD AGAINST OVERHEATING WHEN CONNECTING ALUMINUM WIRE IN CU/AL LUG, REMOVE OXIDE FILM FROM WIRE AND PROTECT IT WITH OXIDE INHIBITING COMPOUND.

USE COPPER OR ALUMINUM WIRE

USE ONLY 75 DEG.C (167 DEG.F) CONDUCTORS ON ALL FIELD INSTALLED LINE, LOAD AND NEUTRAL TERMINATIONS. USE 60 DEG.C (140 DEG.F) CONDUCTORS ON BRANCH CIRCUITS RATED 110A OR LESS.

THIS PANEL IS UNDERGROUND FEED ONLY



by ABB

ENCLOSED PANELBOARD

LOAD CENTER

MOD 3

CAT NO. **TSDR040UFCUAEP**

400 AMPS (320 AMPS CONTINUOUS 120/240 VOLTS AC)

TYPE 3R ENCLOSURE 1 PHASE 3 WIRE 22 KAIC

SUITABLE ONLY FOR USE AS SERVICE EQUIPMENT

THE SHORT CIRCUIT RATING OF THIS PANELBOARD IS EQUAL TO THE LOWEST INTERRUPTING RATING OF ANY INSTALLED CIRCUITBREAKER, BUT NOT MORE THAN 22,000 RMS SYMMETRICAL AMPERES AT 240V SINGLE - PHASE.

WATT - HOUR METER NOT INCLUDED IN SHORT - CIRCUIT RATING

USE ONLY WITH GE CIRCUIT BREAKERS

SHORT CIRCUIT RATING AT 240V AC	AMP	22,000 AIC
MAIN	200	A2N200CTL - 4SB
	175	A2N175CTL - 4SB
	150	A2N150CTL - 4SB
	125	A2N125CTL - 4SB
SPACE FOR MAIN	200	A2N200CTL - 4SB
	175	A2N175CTL - 4SB
	150	A2N150CTL - 4SB
	125	A2N125CTL - 4SB
	BLANK	— — —

BRANCH SPACES

USE G.E. TYPE THQL, THHQL, THOP, TODL, THQDL, THQLGF, THHQLGF

OVER CURRENT PROTECTION

IF BREAKER TRIPS, HANDLE WILL BE IN INTERMEDIATE POSITION. TO RESTORE SERVICE; 1. MOVE HANDLE TO "OFF" POSITION. 2. THEN TO "ON" POSITION.

WARNING: TO AVOID ACCIDENTAL CONTACT WITH LIVE PARTS, CLOSE ALL OPENINGS WITH BREAKERS OR FILLER PLATES: 1/2 INCH FILLER PLATE TFH 1 INCH FILLER PLATE TQLFF1



DANGER

HAZARD OF ELECTRICAL SHOCK OR BURN.
TURN OFF POWER SUPPLYING EQUIPMENT BEFORE WORKING INSIDE

REPLACEMENT PARTS

METER SOCKET BASE, RINGLESS
METER COVER
DEAD FRONT
DISTRIBUTION DOOR

RL400MTRSKT1
RL400MTRCVR3
RL400DF1
RL400DISDR08

ACCESSORIES

TGL2
TGL4
TGL8
SEMI-FLUSHING
FLASHING KIT SF400C

Country of Origin: Mexico

REV. C

MNP602001