

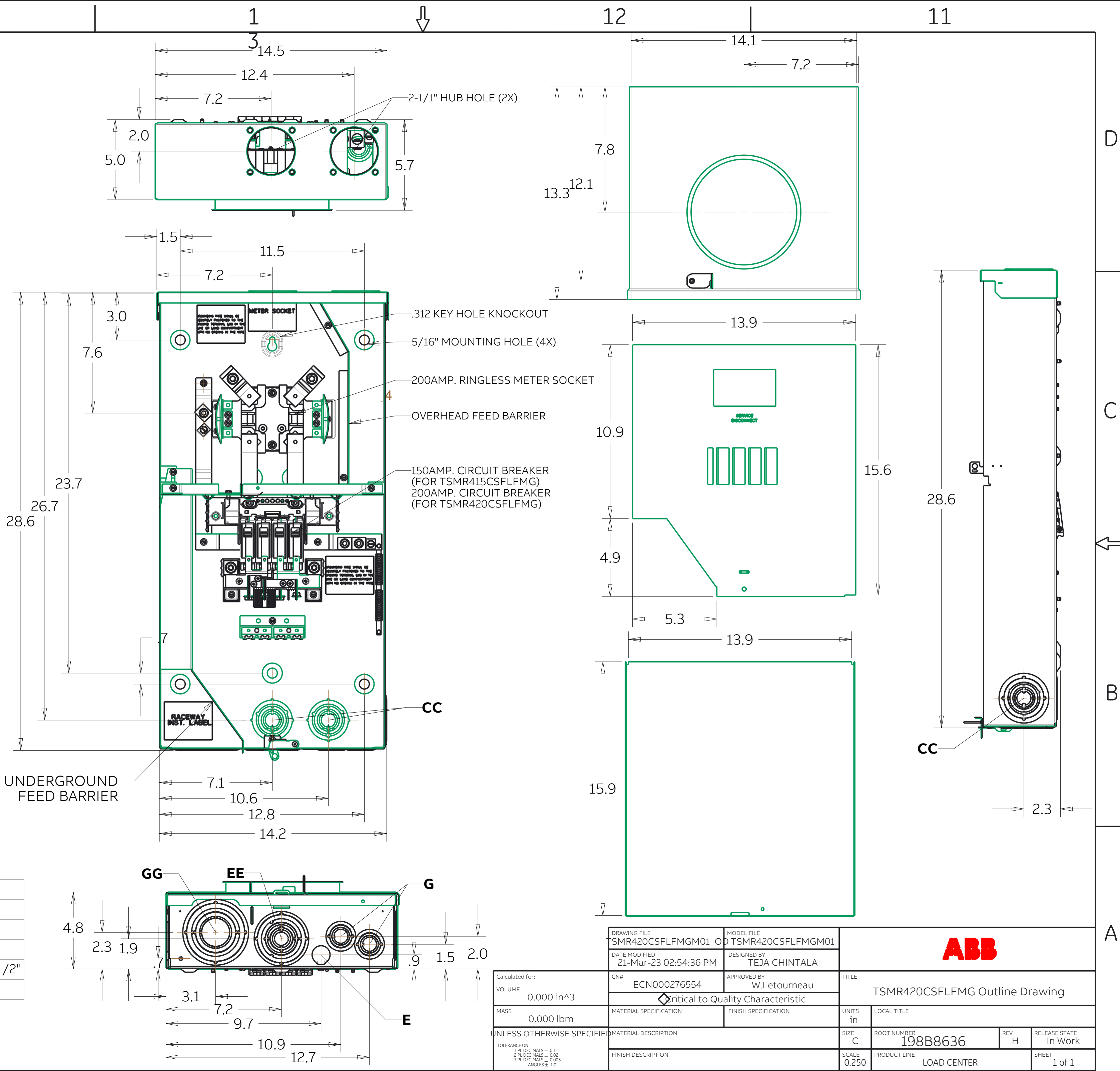
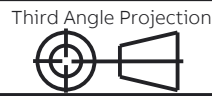
3D Model is the Master Document of Record
Article or Material Must Conform to REACH Procedure S900000 Sec.14
Article or Material Must Conform to RoHS Procedure S900000 Sec.13
Part Must Conform to S900000 Sec.4 Toxicity Procedure
Geometric Dimensioning & Tolerancing as per ASME Y14.5-2009

ABB PROPRIETARY AND CONFIDENTIAL INFORMATION
The information contained in this document has to be kept strictly confidential. It is not to be distributed outside the company or its subsidiaries without prior written permission. Any unauthorized disclosure of this information is strictly forbidden. ABB reserves all rights regarding Intellectual Property Rights.
Copyright 2018 ABB. All rights reserved.

Knockout Table

F= 9/32"
E= 3/4"
G= 1/2", 3/4", 1"
CC= 1/2", 3/4", 1", 1-1/4", 1-1/2", 2"
EE= 1/2", 3/4", 1", 1-1/4", 1-1/2", 2", 2-1/2"
GG= 1-1/4", 1-1/2", 2", 2-1/2", 3"

Product Weight: 33.4 lb



Calculated for:	
VOLUME	0.000 in^3
MASS	0.000 lbm
UNLESS OTHERWISE SPECIFIED	
TOLERANCE ON:	
1 PL DECIMALS ± 0.1	
2 PL DECIMALS ± 0.02	
3 PL DECIMALS ± 0.005	
ANGLES ± 1.0	

DRAWING FILE	MODEL FILE
TSMR420CSFLFMGM01_OD	TSMR420CSFLFMGM01
DATE MODIFIED	DESIGNED BY
21-Mar-23 02:54:36 PM	TEJA CHINTALA
CN#	APPROVED BY
ECN000276554	W.Letourneau
Critical to Quality Characteristic	
MATERIAL SPECIFICATION	FINISH SPECIFICATION
MATERIAL DESCRIPTION	
FINISH DESCRIPTION	

ABB			
TSMR420CSFLFMGM01 Outline Drawing			
UNITS	LOCAL TITLE		
in			
SIZE	ROOT NUMBER	REV	RELEASE STATE
C	198B8636	H	In Work
SCALE	PRODUCT LINE	SHEET	
0.250	LOAD CENTER	1 of 1	